



**SPLIT TYPE
ROOM AIR CONDITIONER
WALL MOUNTED type**

**SERVICE
MANUAL**



Indoor unit	Outdoor unit
ASHA09LGC	AOHR09LGC
ASHA12LGC	AOHR12LGC

CONTENTS

SPECIFICATIONS.....	1
DIMENSIONS.....	2
REFRIGERANT SYSTEM DIAGRAM.....	3
CIRCUIT DIAGRAM.....	4
INDOOR PCB CIRCUIT DIAGRAM.....	5
OUTDOOR PCB CIRCUIT DIAGRAM ...	8
ERROR CONTENTS.....	10
PARTS (Indoor unit).....	11
PARTS (Outdoor unit).....	15
STANDARD ACCESSORIES.....	19

SPECIFICATIONS

ELECTRICAL DATA

TYPE		Cool & heat inverter	
INDOOR UNIT		ASHA09LGC	ASHA12LGC
OUTDOOR UNIT		AOHR09LGC	AOHR12LGC
COOLING CAPACITY		2.50 kW	3.40 kW
HEATING CAPACITY		3.20 kW	4.00 kW
POWER SOURCE		230 V	230 V
FREQUENCY		50 Hz	50 Hz
RUNNING CURRENT	Cooling	3.2 A	4.3 A
	Heating	3.7 A	4.6 A
INPUT WATTS	Cooling	0.630 kW	0.895 kW
	Heating	0.750 kW	0.970 kW
E.E.R.	Cooling	3.97 kW/kW	3.80 kW/kW
COP	Heating	4.27 kW/kW	4.12 kW/kW
MOISTURE REMOVAL		1.3 L/h	1.8 L/h
AIR CIRCULATION HIGH	Cooling	750 m ³ /h	750 m ³ /h
	Heating	750 m ³ /h	750 m ³ /h
MAXIMUM CURRENT	Cooling	6.0 A	6.5 A
	Heating	7.5 A	9.0 A

DIMENSIONS

INDOOR UNIT	H x W x D	260 x 790 x 198 mm
OUTDOOR UNIT	H x W x D	540 x 660 x 290 mm

WEIGHT

INDOOR UNIT	Gross / Net	10 kg / 7.5 kg
OUTDOOR UNIT	Gross / Net	28 kg / 25 kg / 35 kg / 32 kg

COMPRESSOR AND REFRIGERANT

COMPRESSOR TYPE	Hermetic type, 4 pole, 3 phase, DC inverter motor, Rotary		
DISCRIMINATION	5SS072XAA	DA89X1C-20FZ	
WEIGHT (with oil)	5.9 kg	9.9 kg	
STANDARD REFRIGERANT	650 g	800 g	
REFRIGERANT TYPE	R410A	R410A	
FULL CHARGE	Pipe Length 15 m	650 g	800 g
	20 m	750 g	900 g
ADDITIONAL REFRIGERANT	20 g/m		
MAXIMUM PIPING HEIGHT	15m		

FAN MOTOR

POWER SOURCE		230 V
INDOOR UNIT	High speed	Cool 1,440 r.p.m. / Heat 1,440 r.p.m.
	Middle speed	Cool 1,200 r.p.m. / Heat 1,200 r.p.m.
	Low speed	Cool 920 r.p.m. / Heat 980 r.p.m.
	Quiet	Cool 680 r.p.m. / Heat 700 r.p.m.
OUTDOOR UNIT		? r.p.m.

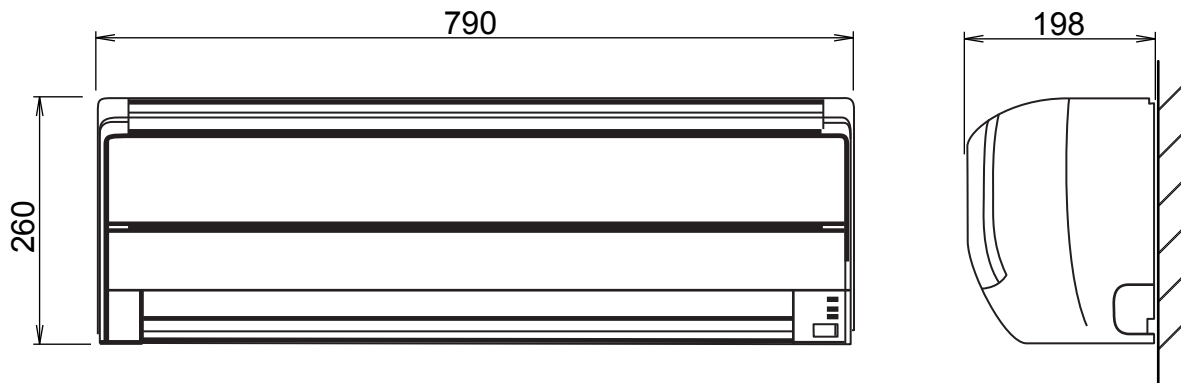
NOISE LEVEL

INDOOR UNIT	High speed	Cool 43 dB / Heat 43 dB	
	Middle speed	Cool 38 dB / Heat 38 dB	
	Low speed	Cool 33 dB / Heat 33 dB	
	Quiet	Cool 21 dB / Heat 21 dB	
OUTDOOR UNIT		C 45 dB / H 45 dB	C 48 dB / H 48 dB

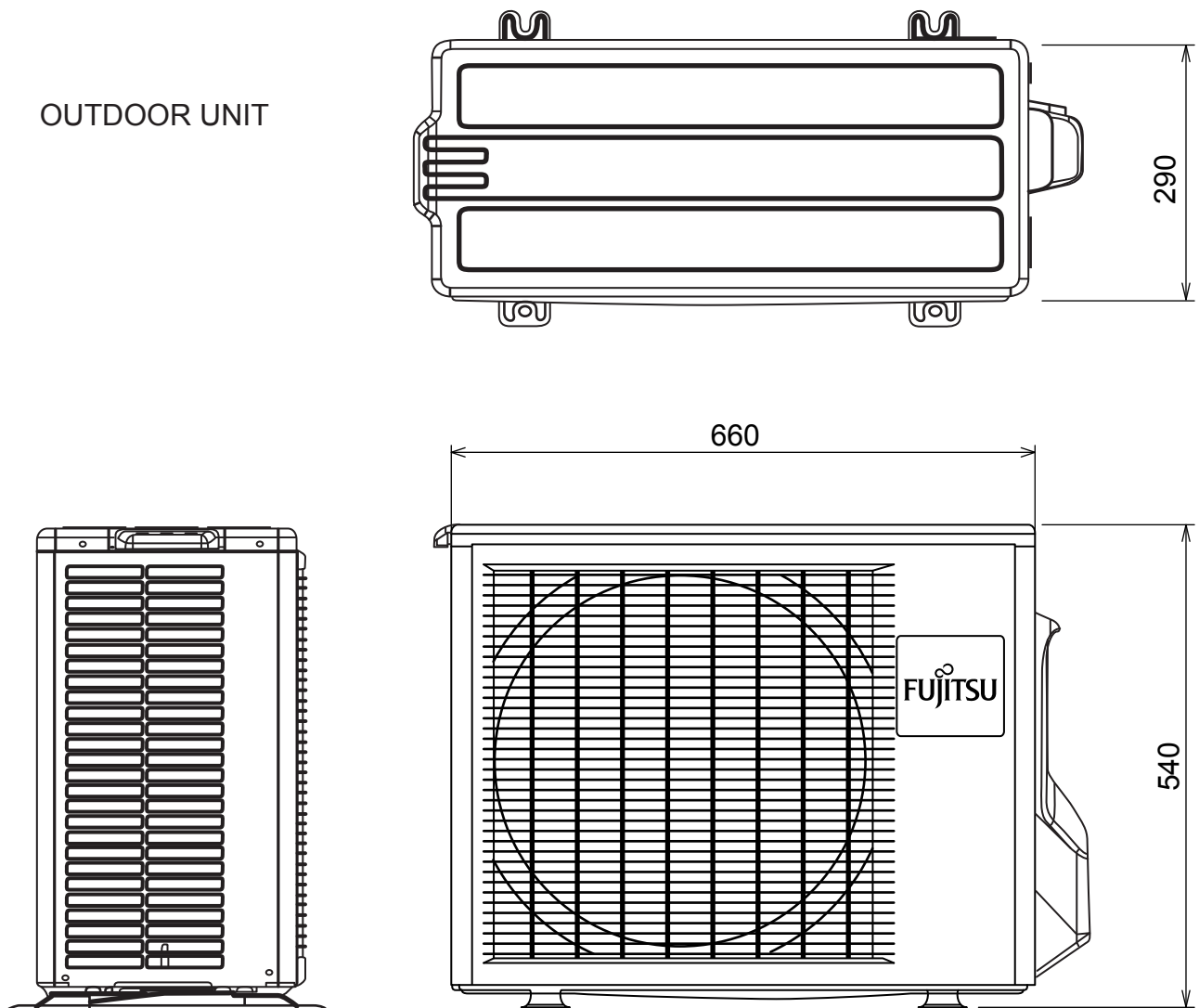
DIMENSIONS

(unit : mm)

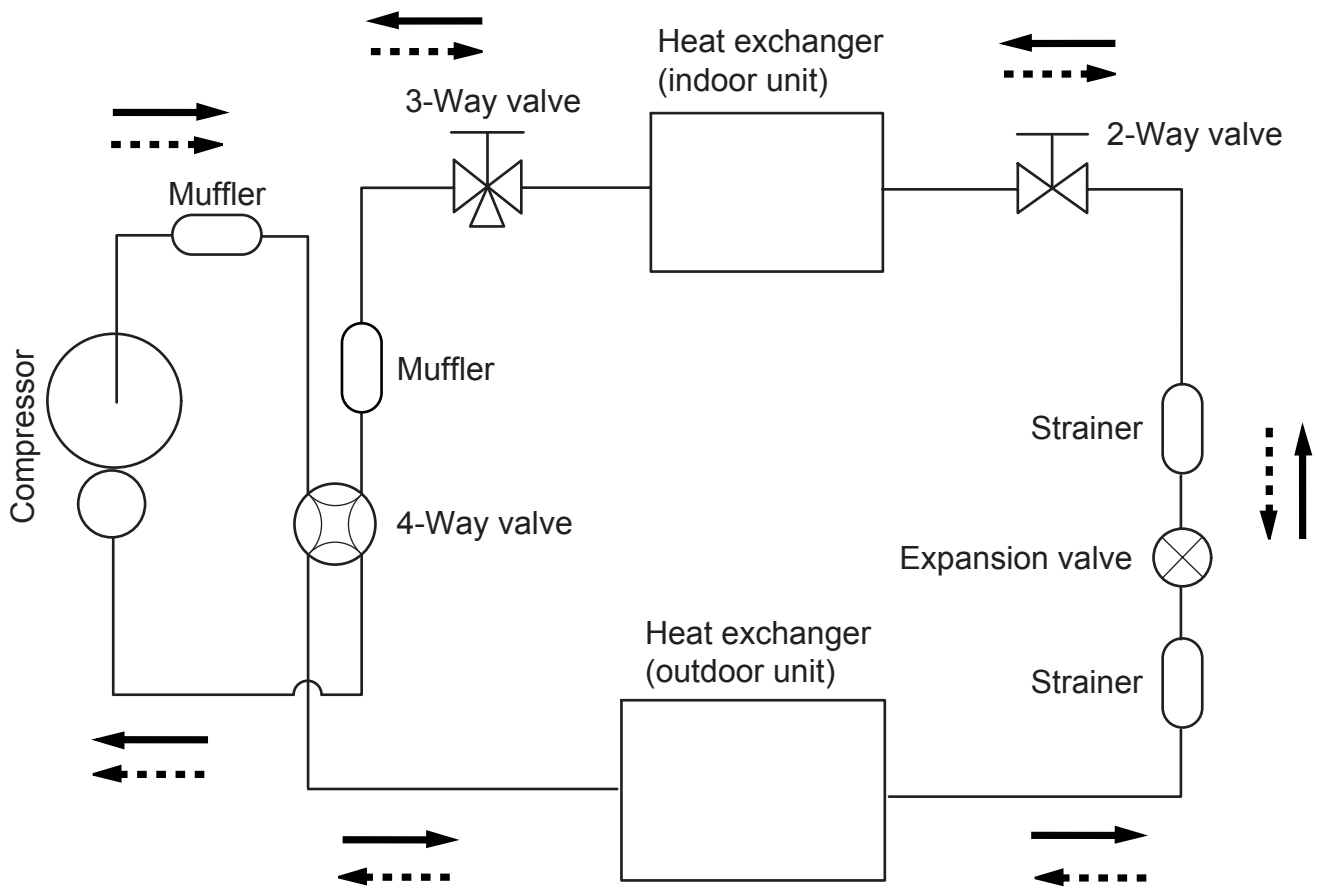
INDOOR UNIT



OUTDOOR UNIT



REFRIGERANT SYSTEM DIAGRAM



Refrigerant direction

————> Cooling

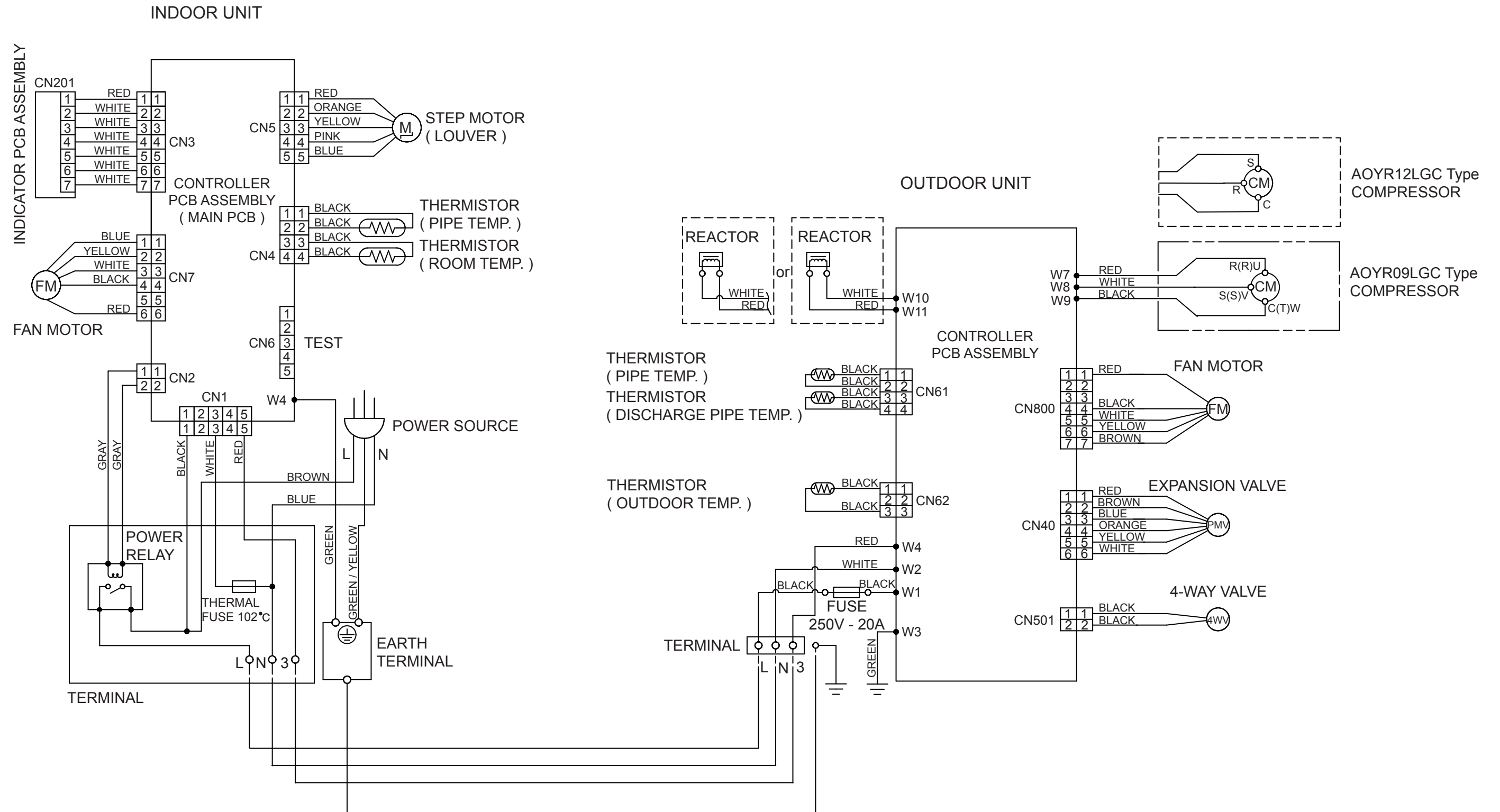
-----> Heating

Refrigerant pipe diameter

Liquid : 1/4" (6.35 mm)

Gas : 3/8" (9.52 mm)

CIRCUIT DIAGRAM

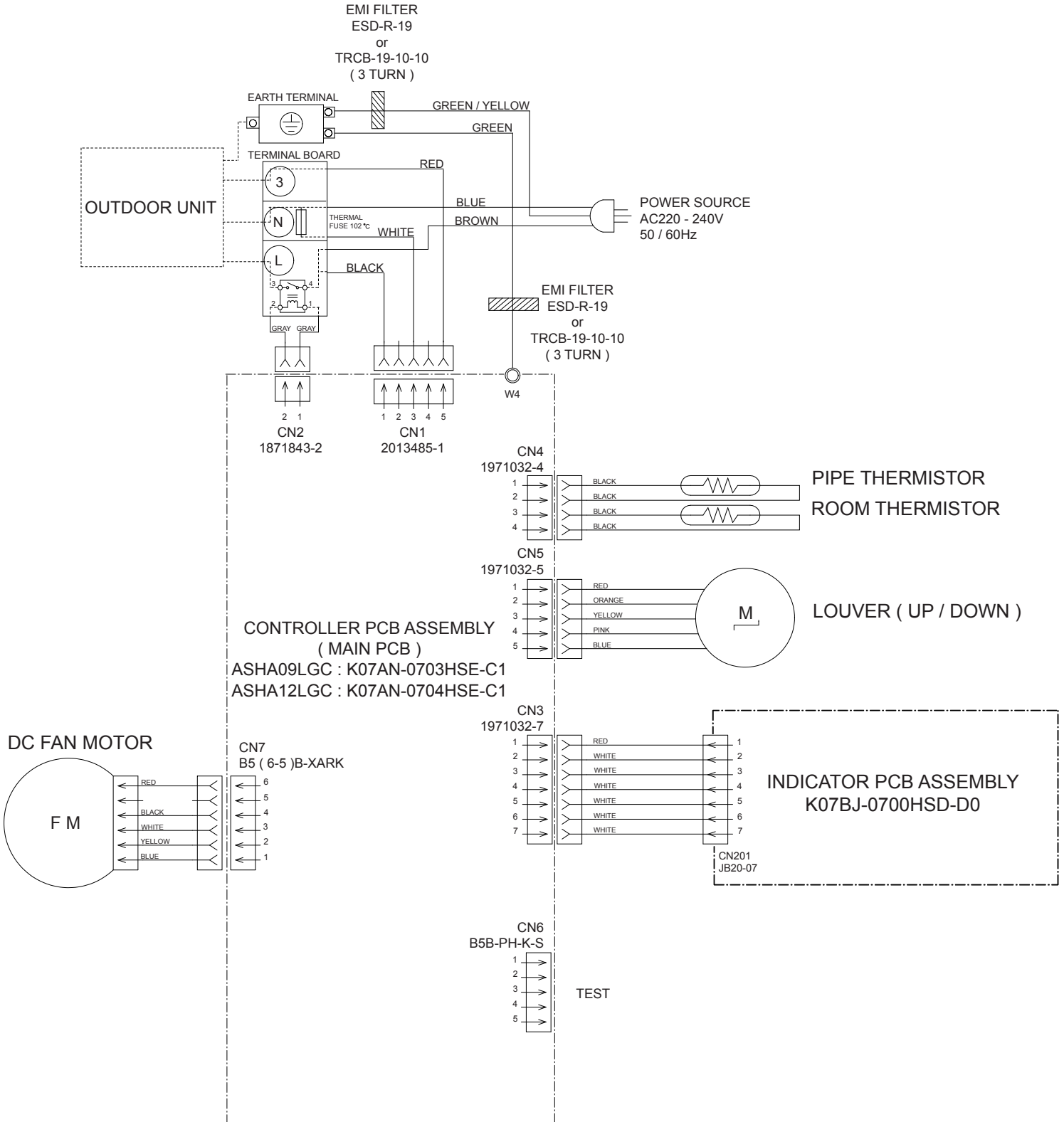


INDOOR PCB CIRCUIT DIAGRAM

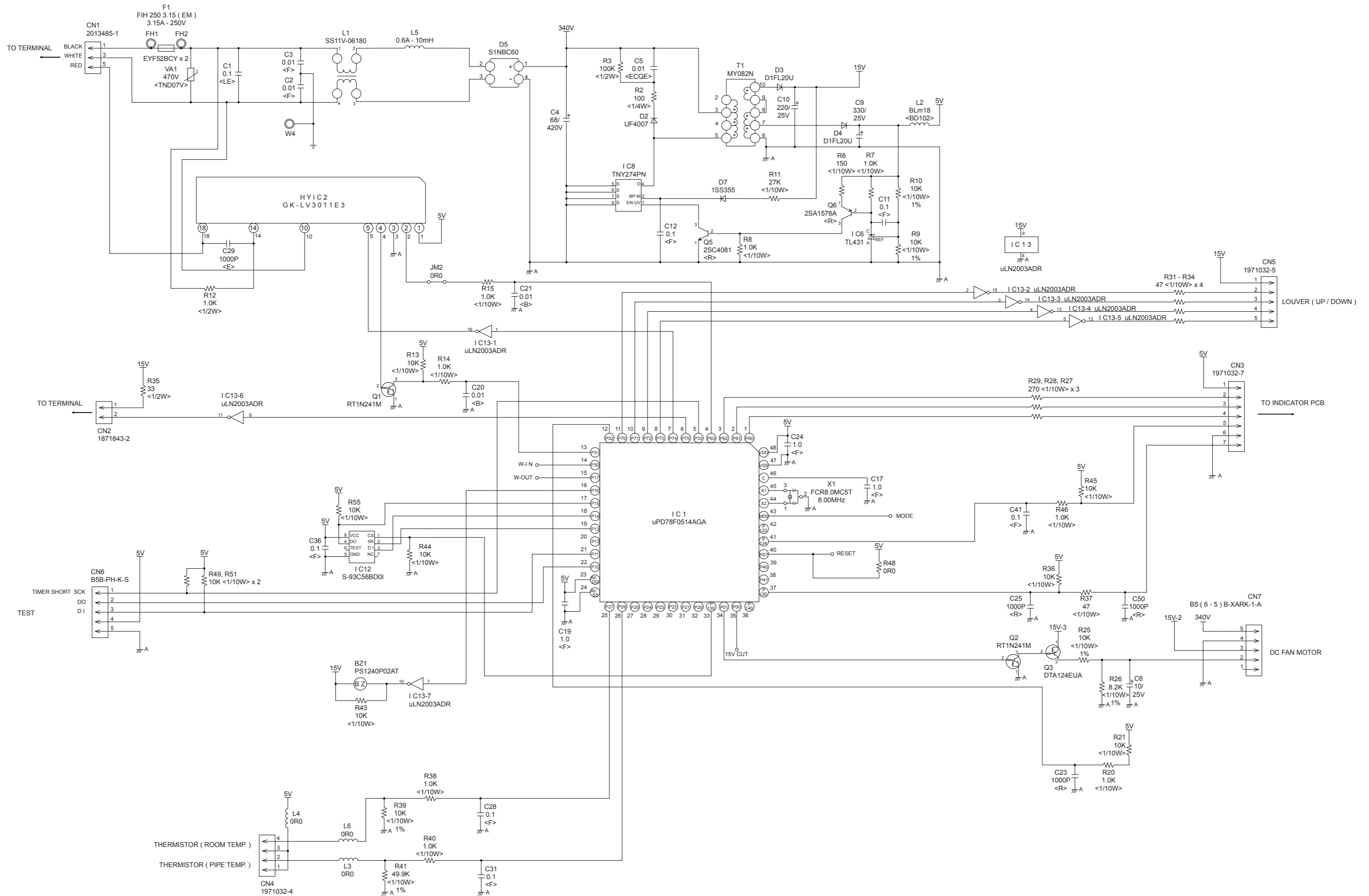
CONTROL UNIT

ASHA09LGC : EZ-007MHSE

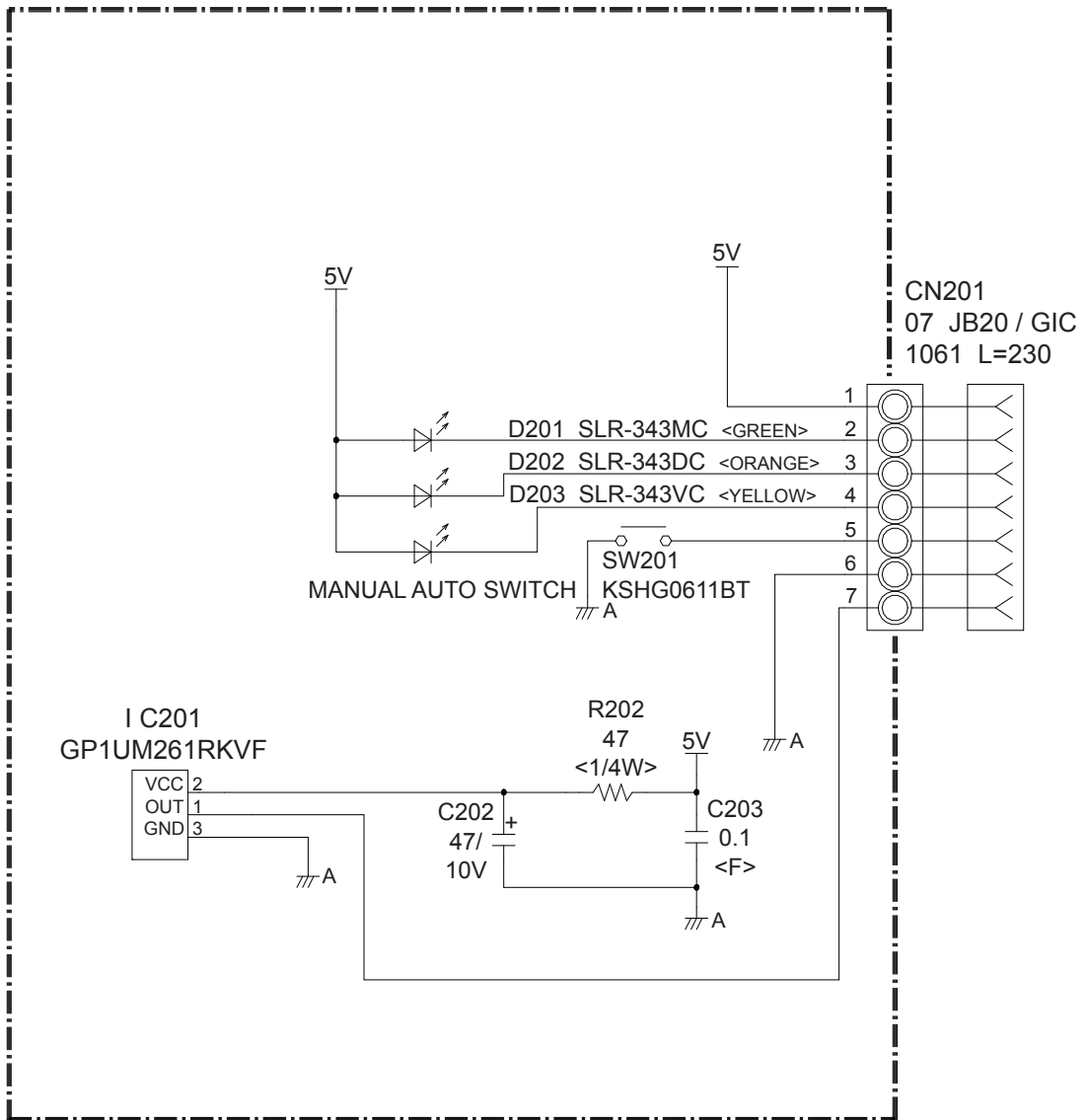
ASHA12LGC : EZ-007PHSE



INDOOR UNIT
 CONTROLLER PCB ASSEMBLY (MAIN PCB)
 ASHA09LGC : K07AN-0703HSE-C1
 ASHA12LGC : K07AN-0704HSE-C1



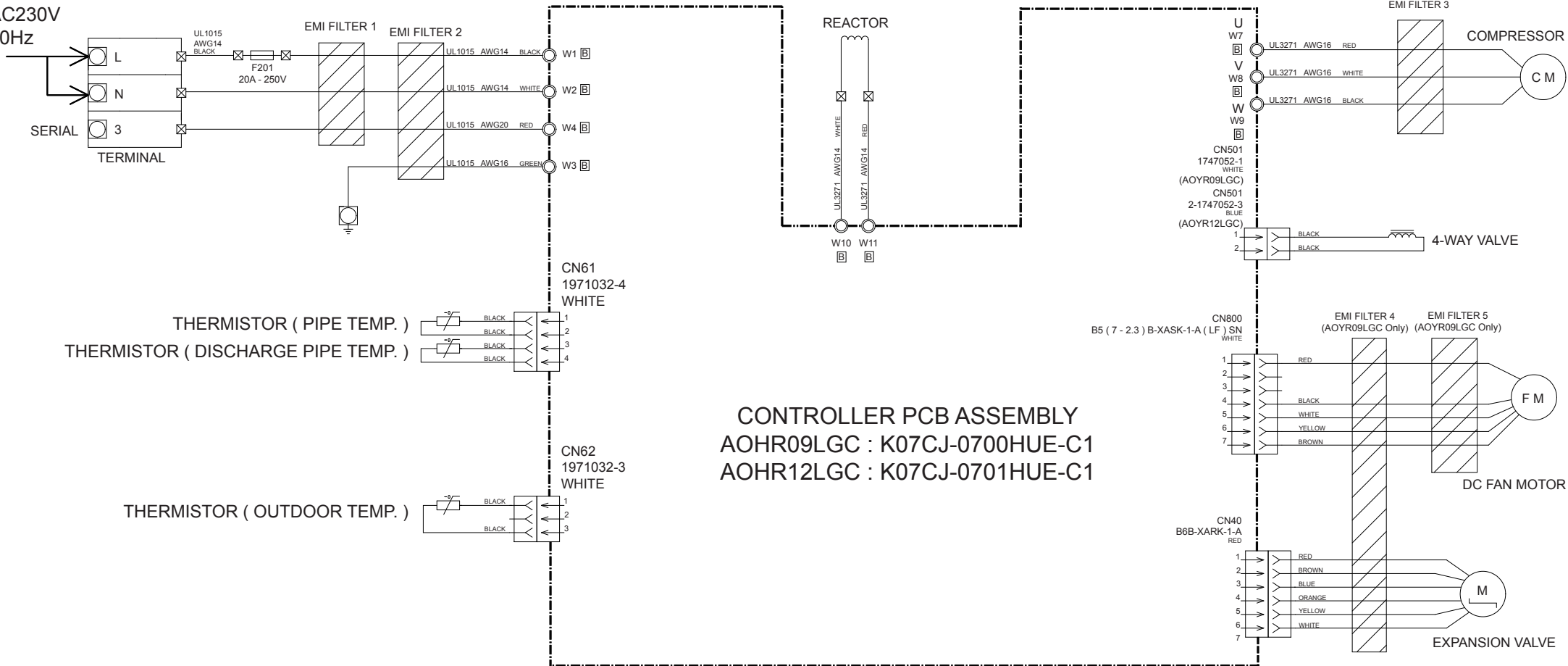
INDOOR UNIT
 INDICATOR PCB ASSEMBLY
 K07BJ-0700HSD-D0



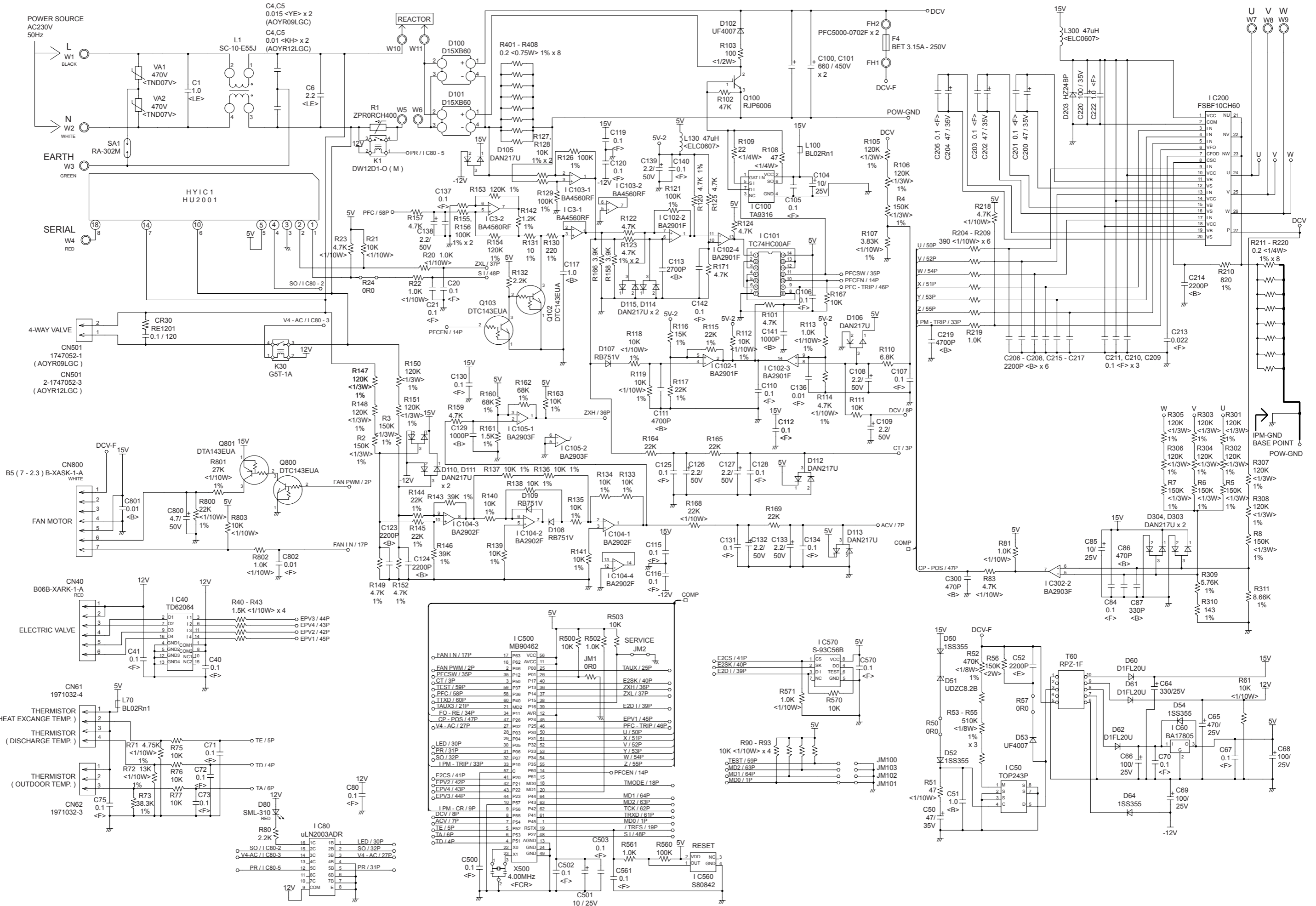
OUTDOOR PCB CIRCUIT DIAGRAM

INVERTER ASSEMBLY
 AOHR09LGC : EZ-0075HUE
 AOHR12LGC : EZ-0076HUE

POWER SOURCE
 AC230V
 50Hz



OUTDOOR UNIT
 CONTROLLER PCB ASSEMBLY
 AOHR09LGC : K07CJ-0700HUE-C1
 AOHR12LGC : K07CJ-0701HUE-C1

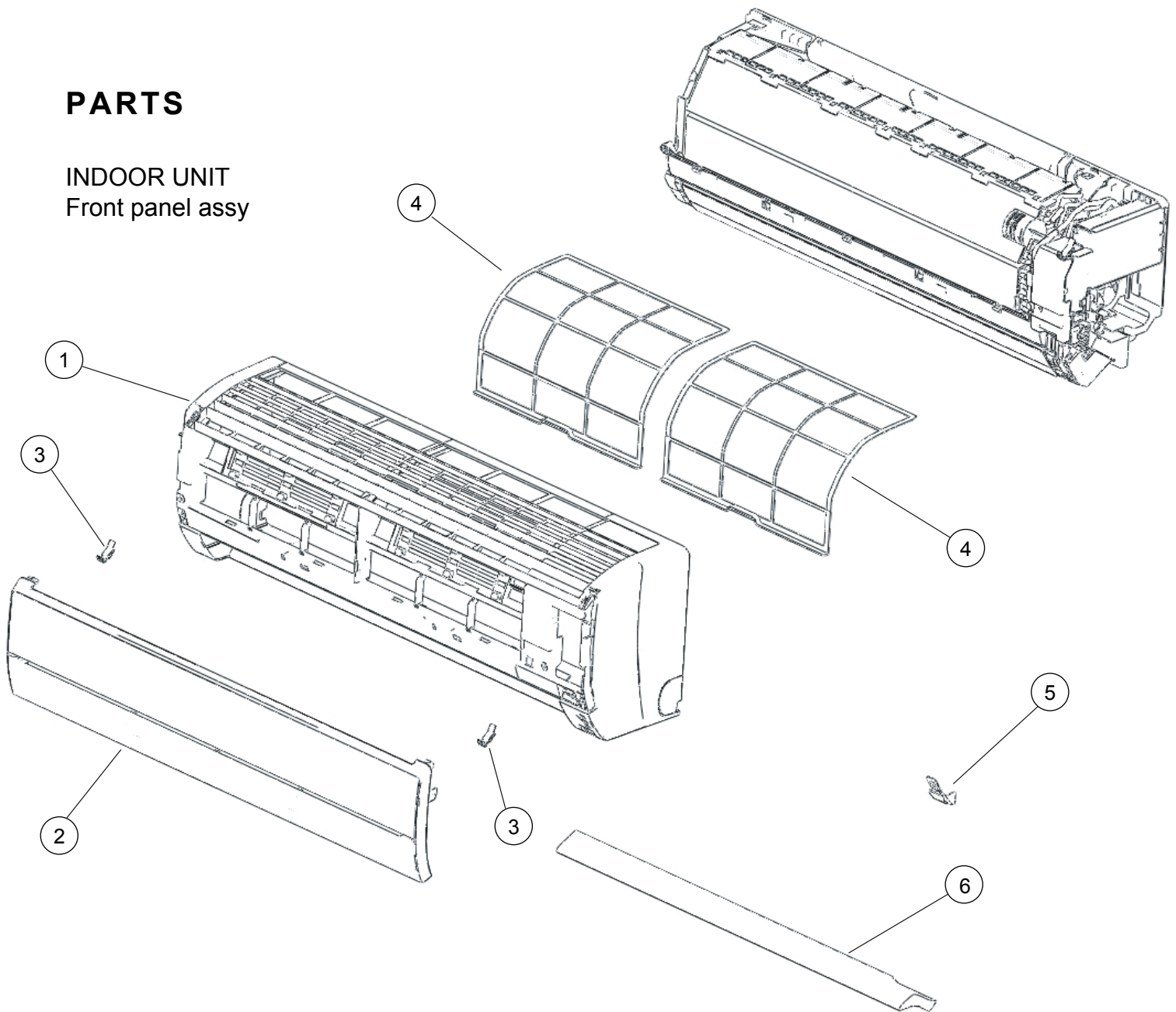


ERROR CONTENTS

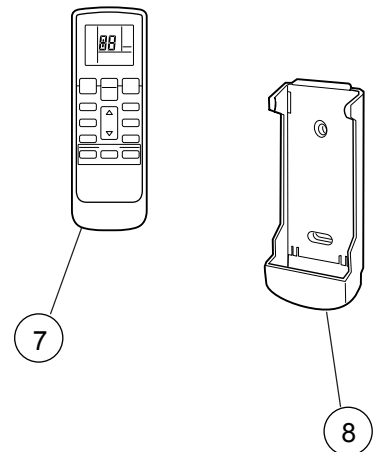
Error	Indoor unit LED		Wired remote control	Error
	Operation LED	Timer LED		
Serial signal error	Off	2 flash	01	Serial signal (reverse) error, at operation start up
		3 flash	01	Serial signal (reverse) error, during operation
		4 flash	13	Serial signal (forward) error, at operation start up
		5 flash	13	Serial signal (forward) error, during operation
		8 flash	00	Wired remote control error
Indoor unit thermistor error	2 flash	2 flash	02	Indoor air thermistor error
		3 flash	04	Heat exchanger middle thermistor error
Outdoor unit thermistor error	3 flash	2 flash	0C	Discharge pipe thermistor error
		3 flash	06	Heat exchanger thermistor error
		4 flash	0A	Outdoor air thermistor error
Indoor unit control error	4 flash	2 flash	20	Manual auto button welded
		3 flash	-	Main relay welded
Outdoor unit control error	5 flash	2 flash	17	Current trip error
		3 flash	18	CT abnormal
		5 flash	1A	Compressor location detection error
		6 flash	1B	Outdoor unit fan drive system abnormal
Indoor fan motor error	6 flash	2 flash	12	Abnormal lock (upper fan motor)
		3 flash	12	Abnormal rotation (upper fan motor)
Refrigerant cycle error	7 flash	2 flash	0F	Discharge temperature abnormal
		3 flash	24	Cooling high pressure abnormal rise
		4 flash	2C ?	DC 4-way valve and expansion valve abnormal
Optional function error	8 flash	2 flash	19	Active filter error (first)
		3 flash	19	Active filter error (second)
		4 flash	25	PFC circuit error
Model information error	0.1 sec on/off	0.1 sec on/off	11	Model information error

PARTS

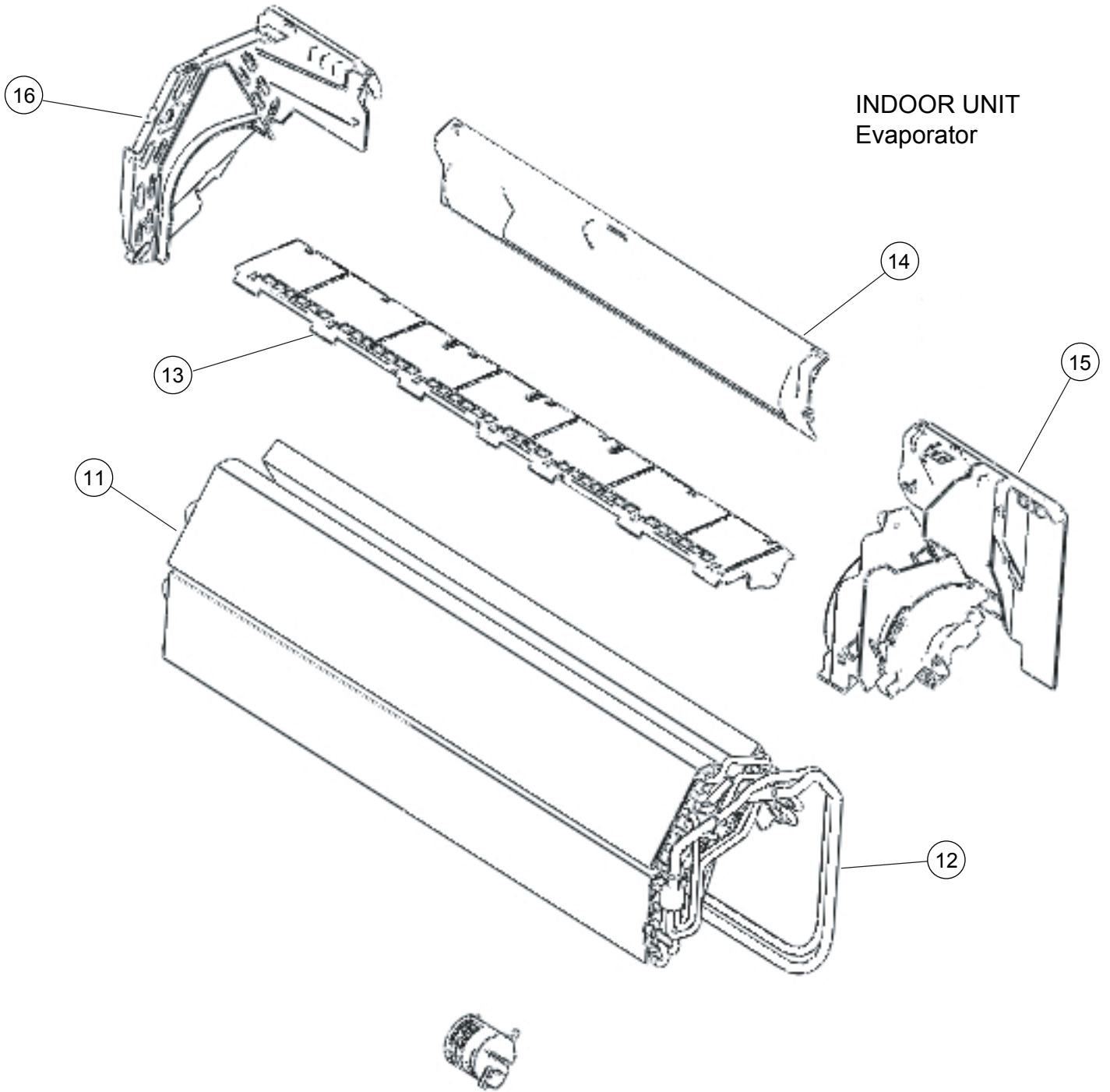
INDOOR UNIT
Front panel assy



Ref.	Description	Part number
1	Front Panel	9316558014
2	Intake Grille	9316560024
3	Clamper (Grille)	9316906006
4	Air Filter	9316562004
5	Receiver Window	9316588004
6	Panel Cover	9316561007
7	Remote Control	9316397026
8	Remote Control Holder	9305642045
--	Air Clean Filter Assy	9317250009
--	Wire Cover	9316559004
--	Wire Shield	9316584006

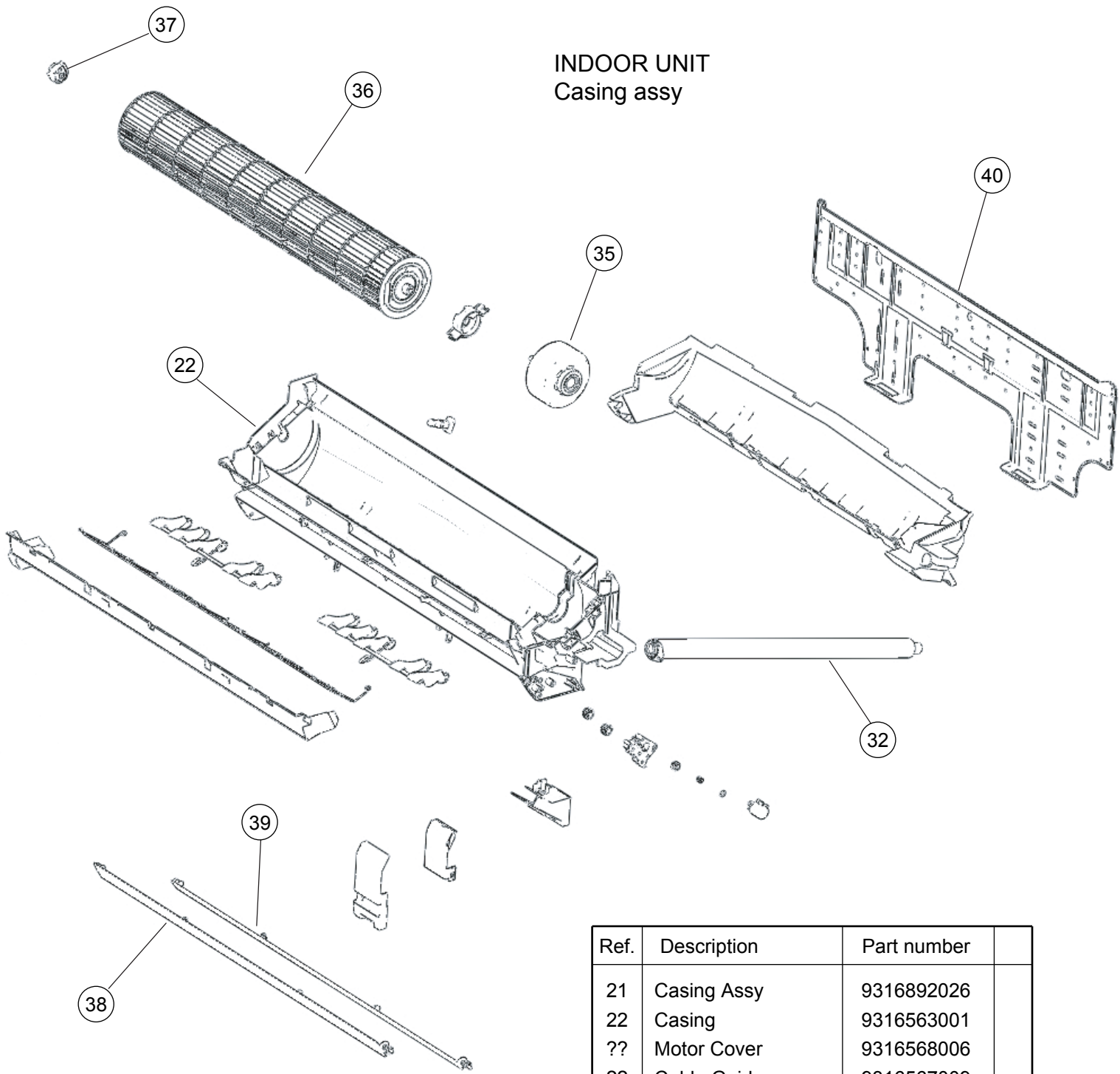


INDOOR UNIT
Evaporator



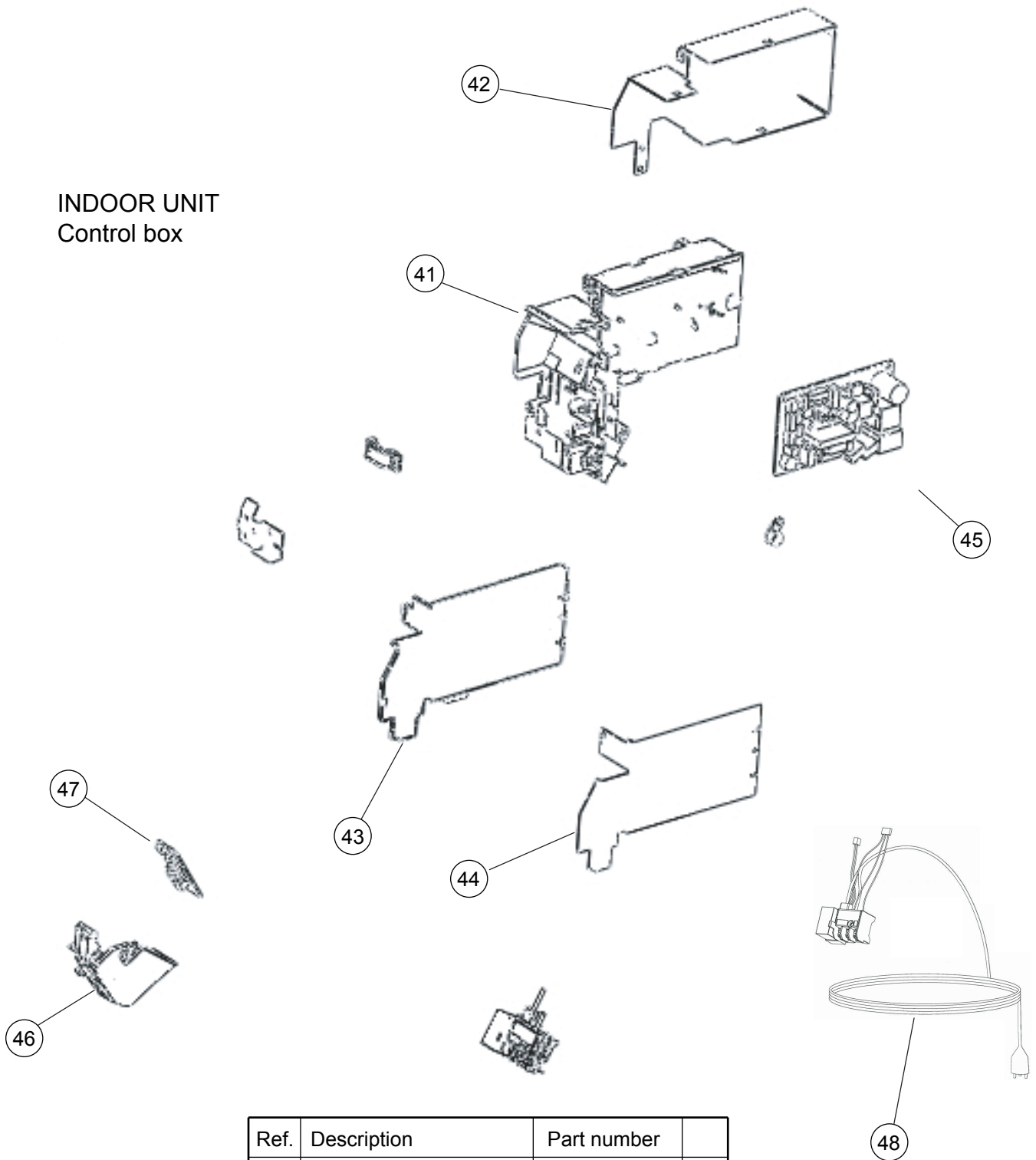
Ref.	Description	Part number
11	Evaporator Assy (09)	9316922013
11	Evaporator Assy (12)	9317268011
12	Joint Pipe Assy (09)	9316923010
12	Joint Pipe Assy (12)	9317190015
13	Filter Guide	9316578005
14	Rear Bracket	9316566002
15	Evaporator Holder R	9316565005
16	Evaporator Holder L	9316564008

INDOOR UNIT
Casing assy



Ref.	Description	Part number
21	Casing Assy	9316892026
22	Casing	9316563001
??	Motor Cover	9316568006
??	Cable Guide	9316567009
??	Casing Cover B	9316569003
??	Casing Cover F	9316570009
??	R and L Louver B	9316961005
??	Louver Gear Holder	9316575004
??	Louver Gear	9316574007
??	Gear A	9309994003
??	Motor Step	9900139117
32	Drain Hose Assy	9316904002
??	Drain Cap	9316177017
??	Fan Guard	9317182003
35	Fan Motor	9602704002
36	Crossflow Fan Assy	9316830004
37	Shaft Holder C	9306628017
38	Louver U	9316572003
39	Louver Z	9316573000
40	Bracket Panel	9316590007

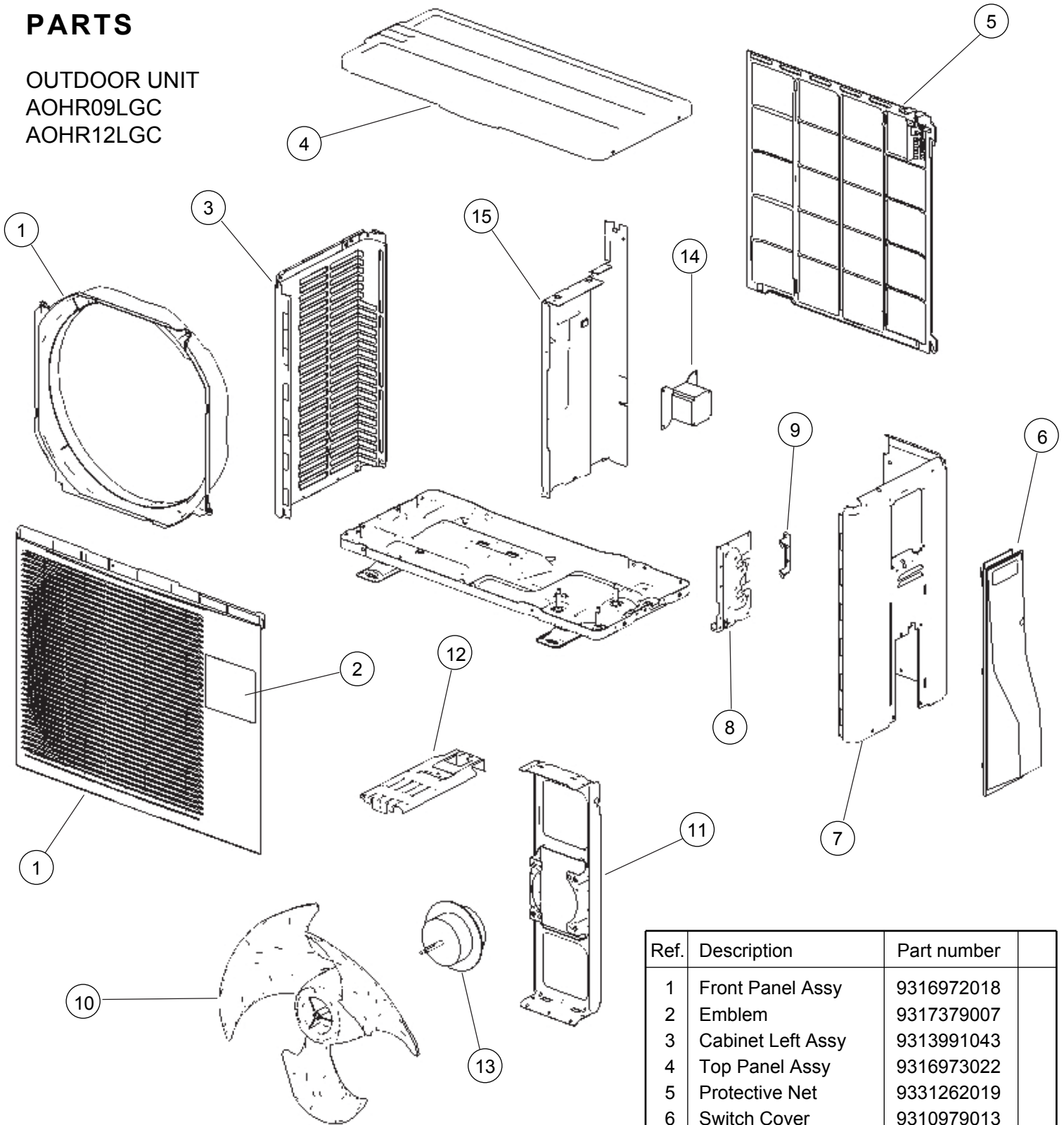
INDOOR UNIT
Control box



Ref.	Description	Part number	
41	Control Box	9316582002	
42	Box Shield	9316580008	
43	Control Cover	9316583009	
44	Cover Shield	9316581005	
45	Controller PCB Assy (09)	9707645040	
45	Controller PCB Assy (12)	9707645057	
46	Display Case	9316587007	
47	Display PCB Assy	9707649017	
48	Power Cord Assy	9900456016	
--	Earth Terminal	9316586000	
--	Thermistor Assy	9900459000	
--	Room Thermistor Holder	9316895003	

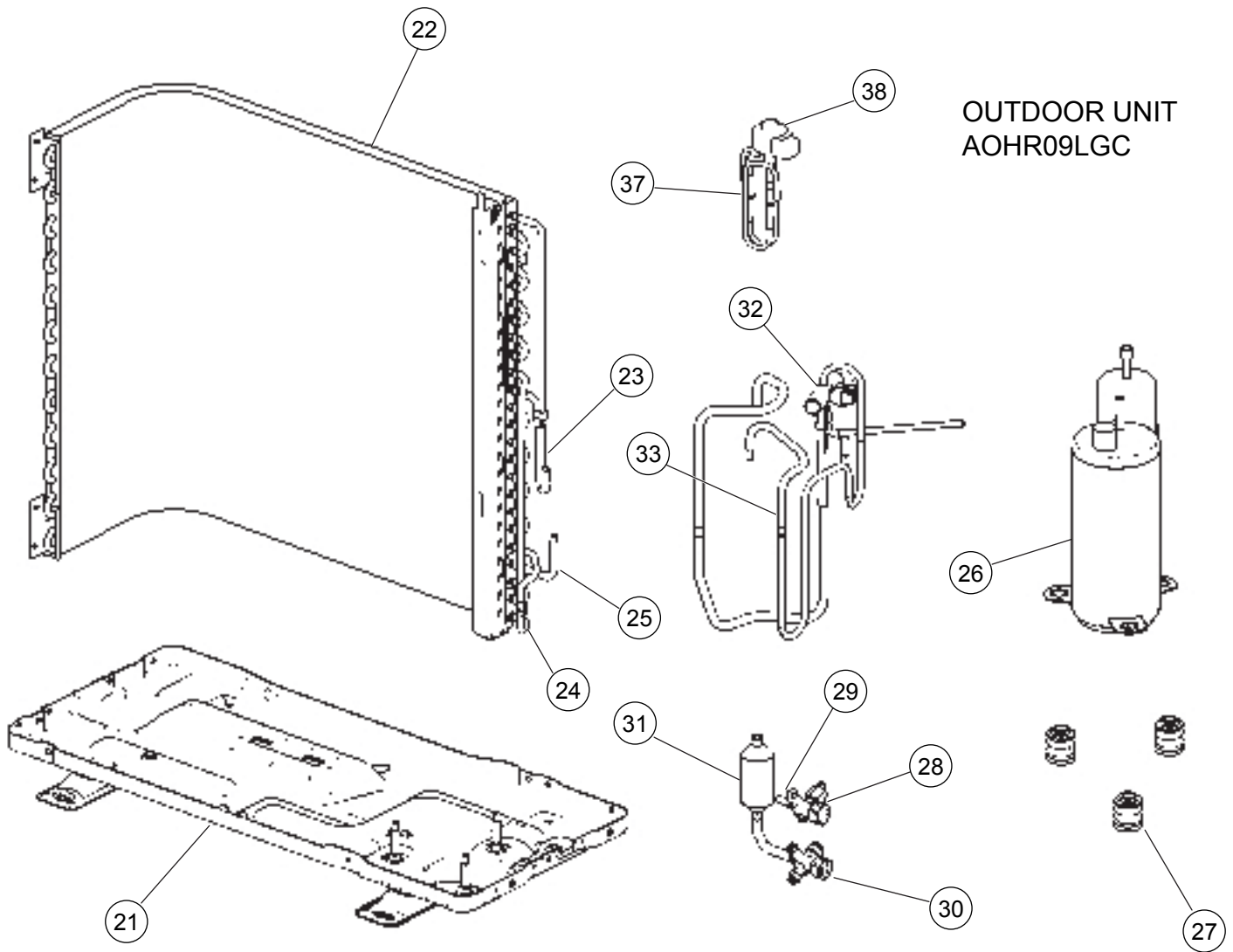
PARTS

OUTDOOR UNIT
AOHR09LGC
AOHR12LGC



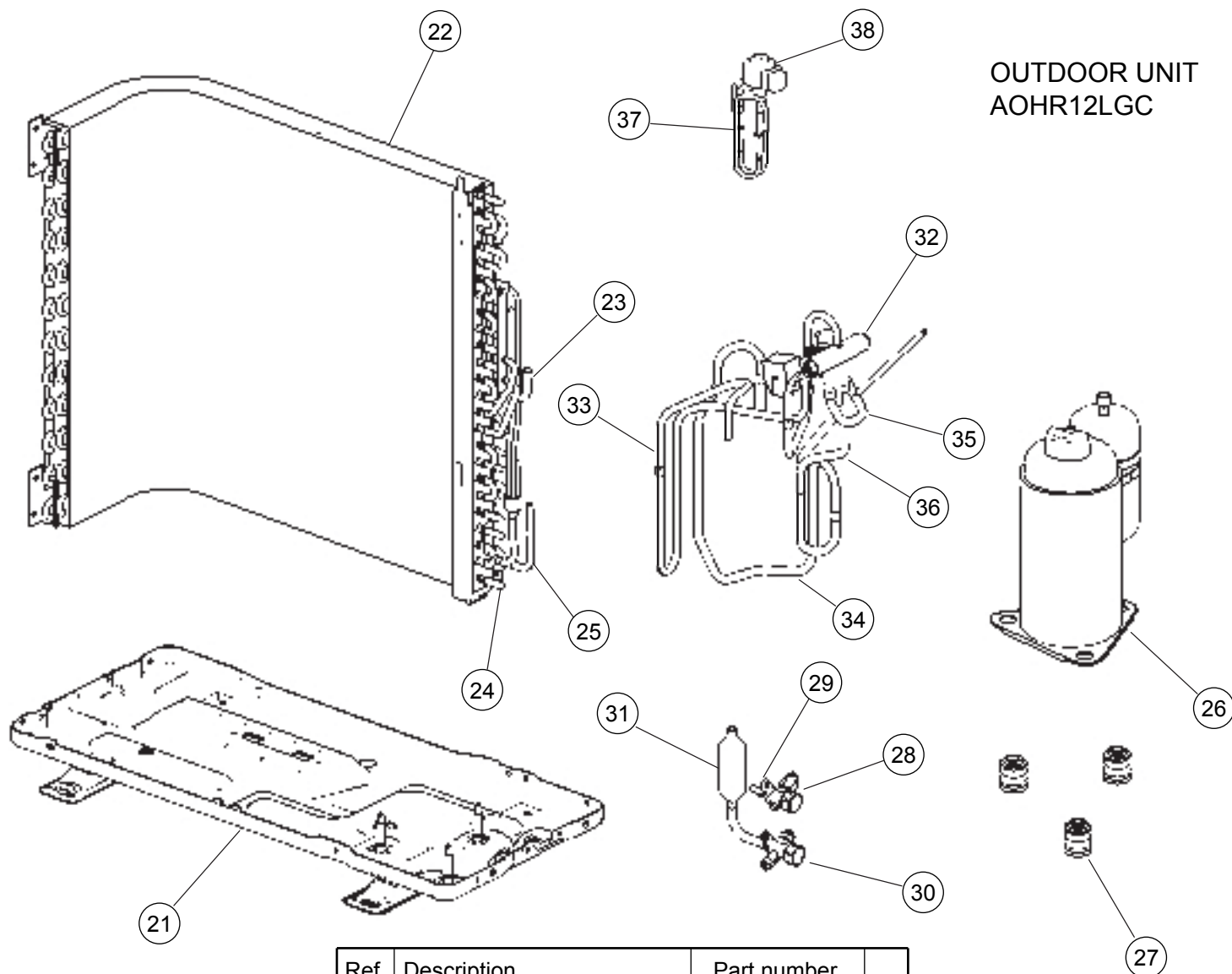
Ref.	Description	Part number
1	Front Panel Assy	9316972018
2	Emblem	9317379007
3	Cabinet Left Assy	9313991043
4	Top Panel Assy	9316973022
5	Protective Net	9331262019
6	Switch Cover	9310979013
7	Cabinet Right Assy	9331336055
8	Valve Bracket	9316523012
9	Valve Bracket Cover	9331683005
10	Propeller Fan	9309909014
11	Motor Bracket	9316538009
12	REM Plate Assy (09)	9316967038
12	REM Plate Assy (12)	9316967021
13	Fan Motor (09)	9602706006
13	Fan Motor (12)	9602751006
14	Reactor Assy	9900357023
15	Separator Assy	9317392006

OUTDOOR UNIT
AOHR09LGC



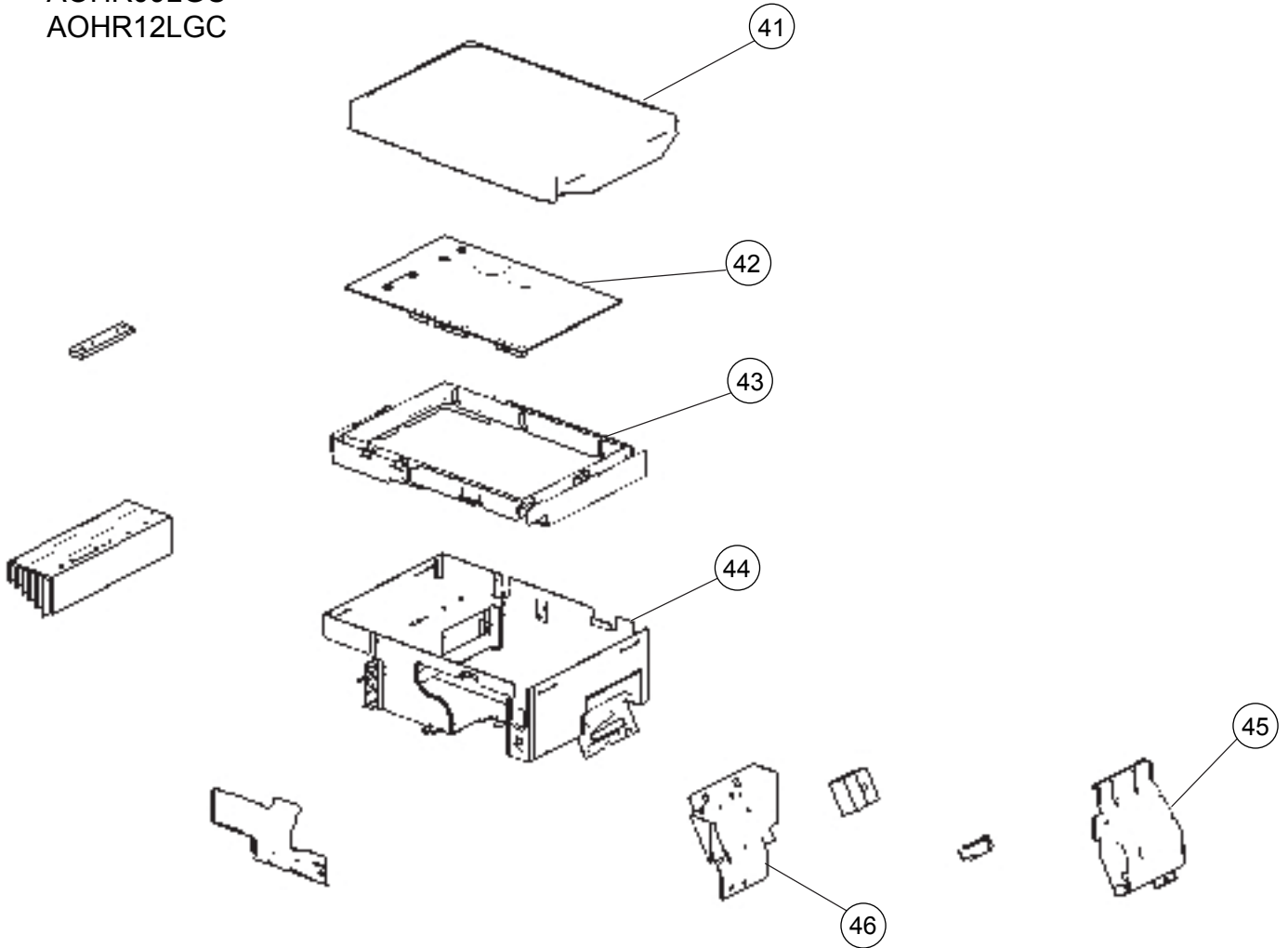
Ref.	Description	Part number
21	Base Assy	9316916005
22	Condenser Assy	9317286008
23	Entrance Pipe Assy (Cond)	9317163019
24	Separate Pipe Assy (Cond)	9317152013
25	Exit Pipe	9317338004
26	Compressor Assy	9317083010
27	Cushion	9306410001
28	2 way Valve Assy	9317171014
29	Joint Pipe (2 way Valve)	9317344005
30	3 way Valve Assy	9317174015
31	Muffler	9317394000
32	4 way Valve	9970074011
33	Discharge Pipe Assy	9317159012
37	Pulse Motor Valve Assy	9317216005
38	Expansion Valve Coil	9900057039
--	Solenoid	9970077012
--	Condenser Total Assy	9317287012
--	4 way Valve Assy	9317158015
--	Insulator B	9317400015
--	Insulator F	9331460019
--	Insulator H	9317401012

OUTDOOR UNIT
AOHR12LGC



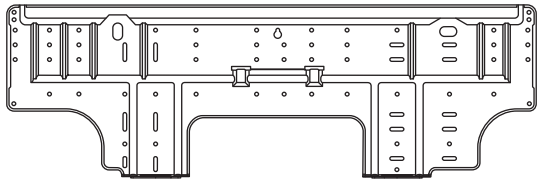

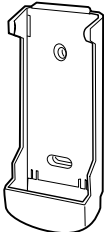
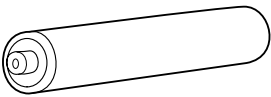
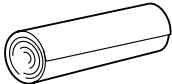
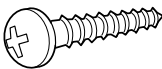
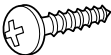
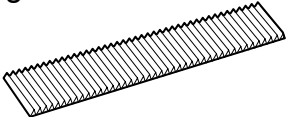
Ref.	Description	Part number
21	Base Assy	9316980006
22	Condenser Assy	9317193016
23	Entrance Pipe Assy (Cond)	9317194013
24	Separate Pipe Assy (Cond)	9317200011
25	Exit Pipe	9317239004
26	Compressor Assy	9315206015
27	Cushion	9306410001
28	2 way Valve Assy	9317171014
29	Joint Pipe (2 way Valve)	9317344005
30	3 way Valve Assy	9317174015
31	Muffler	9317398008
32	4 way Valve	9900162016
33	Discharge Pipe Assy	9317279000
34	Suction Pipe Assy	9317282017
35	Joint Pipe Assy (Cond)	9317396011
36	Joint Pipe (3 way Valve)	9317214001
37	Pulse Motor Valve Assy	9317216005
38	Expansion Valve Coil	9900057039
--	Solenoid	9970055027
--	Condenser Total Assy	9317192019
--	4 way Valve Assy	9317278010
--	Insulator B	9317321006
--	Insulator F	9317403009
--	Insulator H	9317322003

OUTDOOR UNIT
 AOHR09LGC
 AOHR12LGC



Ref.	Description	Part number	
41	Sealed Panel	9331256018	
42	Controller PCB Assy (09)	9707706017	
42	Controller PCB Assy (12)	9707706024	
43	PCB Holder	9331261012	
44	Inverter Case Assy	9331279017	
45	Terminal Cover	9331269025	
46	Terminal	9306489168	
--	Outdoor Thermistor	9900452025	
--	Thermistor Assy	9900451059	

STANDARD ACCESSORIES

Name and Shape	Part number
<p>Wall hook bracket</p> 	<p>9316590007</p>
<p>Remote control</p> 	<p>9316397026</p>
<p>Remote control holder</p> 	<p>9305642045</p>
<p>Battery (penlight)</p> 	<p>0600185534</p>
<p>Cloth tape</p> 	<p>9310519004</p>
<p>Tapping screw (big) (ϕ 4 x 25)</p> 	<p>0700076046</p>
<p>Tapping screw (small) (ϕ 3 x 12)</p> 	<p>0700019036</p>
<p>Air cleaning filter</p> 	<p>9311925088 9312153077</p>

0801G3345