



**SPLIT TYPE
ROOM AIR CONDITIONER
CEILING WALL type**

**SERVICE
MANUAL**

Models	Indoor unit	Outdoor unit
	AWG24FBAJ	AOG24FNAD
	AWG24UBAJ	AOG24UNADL



C O N T E N T S

SPECIFICATIONS 1
DIMENSIONS 2
REFRIGERANT SYSTEM DIAGRAM 3
CIRCUIT DIAGRAM 4
ERROR DISPLAY 6
INDOOR PRINTED CIRCUIT BOARD CIRCUIT DIAGRAM 7
DISASSEMBLY ILLUSTRATION 9
PARTS LIST 25
STANDARD ACCESSORIES 27

S P E C I F I C A T I O N S

TYPE		COOL	COOL & HEAT
INDOOR UNIT		AWG24FBAJ	AWG24UBAJ
OUTDOOR UNIT		AOG24FNAD	AOG24UNADL
COOLING CAPACITY	(kW)	6.80	
HEATING CAPACITY	(kW)	—	7.40

ELECTRICAL DATA

POWER SOURCE	(V)	230		
FREQUENCY	(Hz)	50		
RUNNING CURRENT	(A)	COOLING	9.4	9.4
		HEATING	—	9.0
INPUT WATTS	(kW)	COOLING	2.12	2.12
		HEATING	—	2.05
E.E.R.	(kW/kW)	COOLING	3.21	3.21
		HEATING	—	3.61
MOISTURE REMOVAL	(ℓ/hr)	2.5		
AIR CIRCULATION-Hi	(m³/hr)	1,050		

COMPRESSOR

TYPE	Hermetic type, Deposit electrode condenser, 2 poles, Single phase, Induction motor, Rotary		
DISCRIMINATION	5JS270DAA01		
REFRIGERANT	R410A	(g)	1,900

FAN MOTOR

POWER SOURCE	(V)	230	
INDOOR UNIT	DISCRIMINATION	MFA-36JO	
	HI-SPEED	(r.p.m.)	1,450
	MED-SPEED	(r.p.m.)	1,230
	LO-SPEED	(r.p.m.)	1,020
OUTDOOR UNIT	DISCRIMINATION	MFB-30NTT	MFB-30NTAT
	HI-SPEED	(r.p.m.)	730
	HI-SPEED	(r.p.m.)	—

DIMENSIONS

INDOOR UNIT	H x W x D	(mm)	270 x 1,150 x 285	
OUTDOOR UNIT			900 x 900 x 350	

WEIGHT

INDOOR UNIT	GROSS / NET	(kg)	26 / 16	
OUTDOOR UNIT			85 / 73	86 / 74

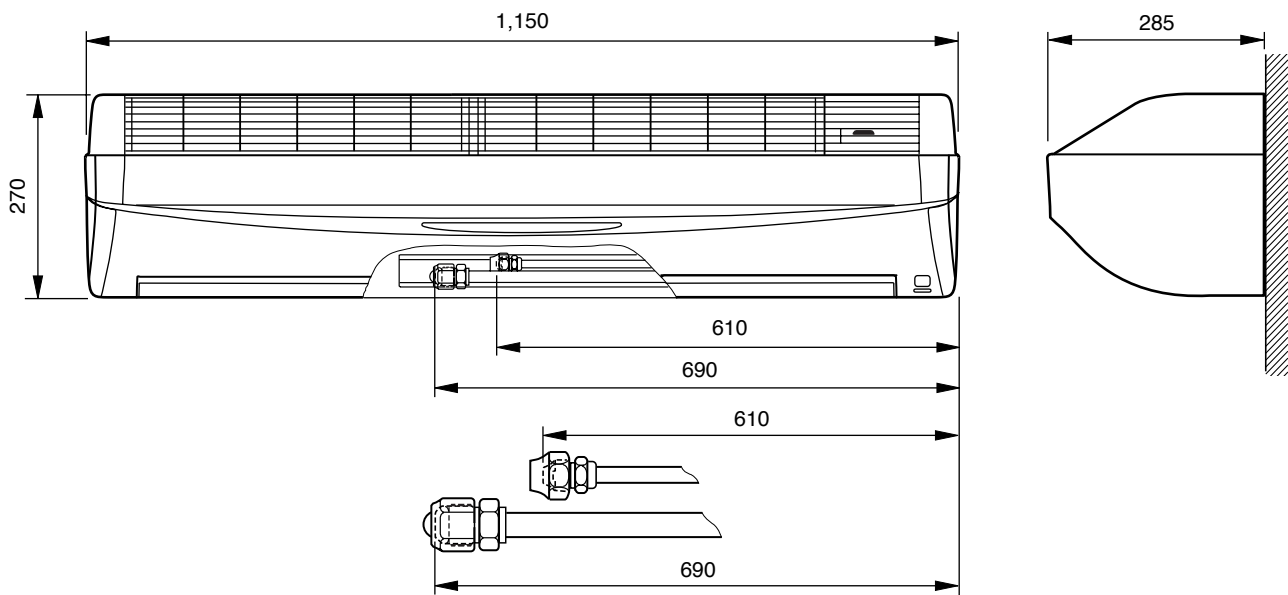
REFRIGERANT CHARGE (R410A)

MODEL		PIPE LENGTH				Additional refrigerant
		7.5 m (25 ft)	10 m (33 ft)	15 m (49 ft)	20 m (66 ft)	
FULL CHARGE AMOUNT	AWG24FBAJ	1,900 g (67.0 oz)	1,950 g (68.8 oz)	2,050 g (72.3 oz)	2,150 g (75.8 oz)	20 g (0.71 oz) / 1 m (3.3 ft) (over 7.5 m)
	AWG24UBAJ	1,900 g (67.0 oz)	2,000 g (70.6 oz)	2,200 g (77.6 oz)	2,400 g (84.7 oz)	40 g (1.42 oz) / 1 m (3.3 ft) (over 7.5 m)

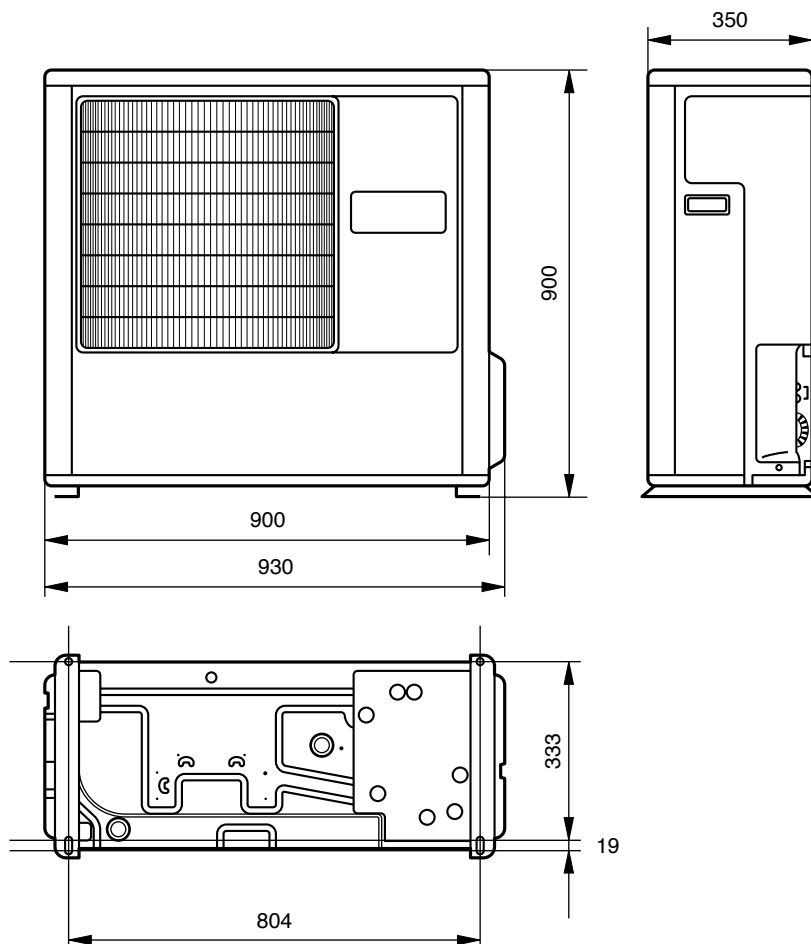
DIMENSIONS

Models : **AWG24FBAJ**
AWG24UBAJ

Unit : mm

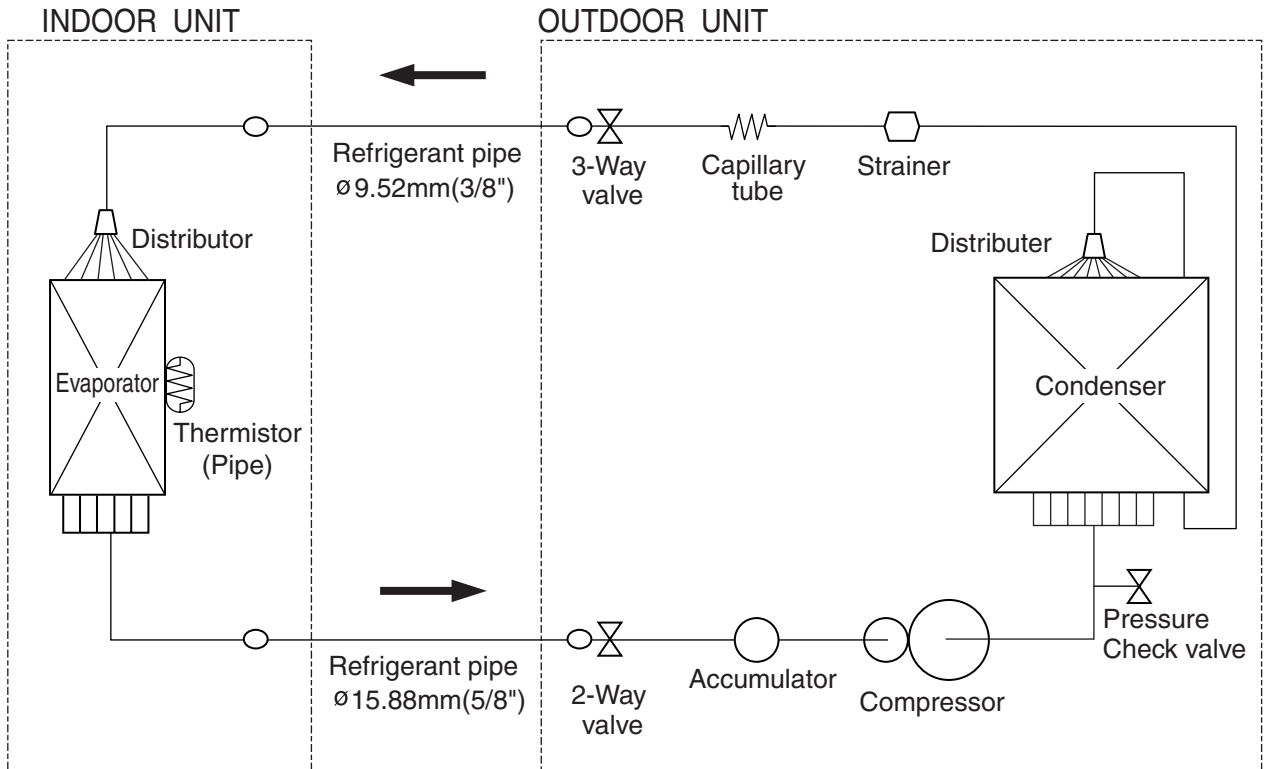


Models : **AOG24FNAD**
AOG24UNADL

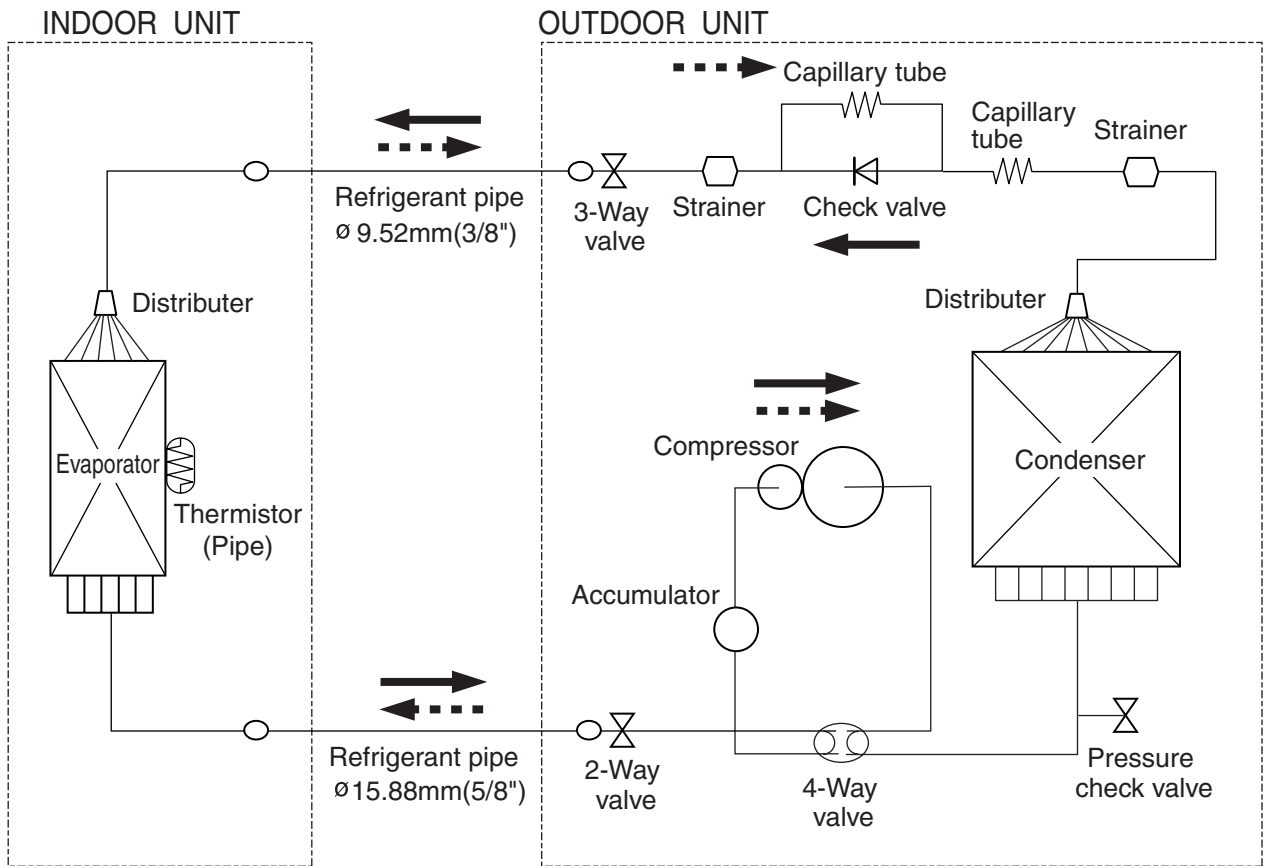


REFRIGERANT SYSTEM DIAGRAM

Models : AWG24FBAJ / AOG24FNAD



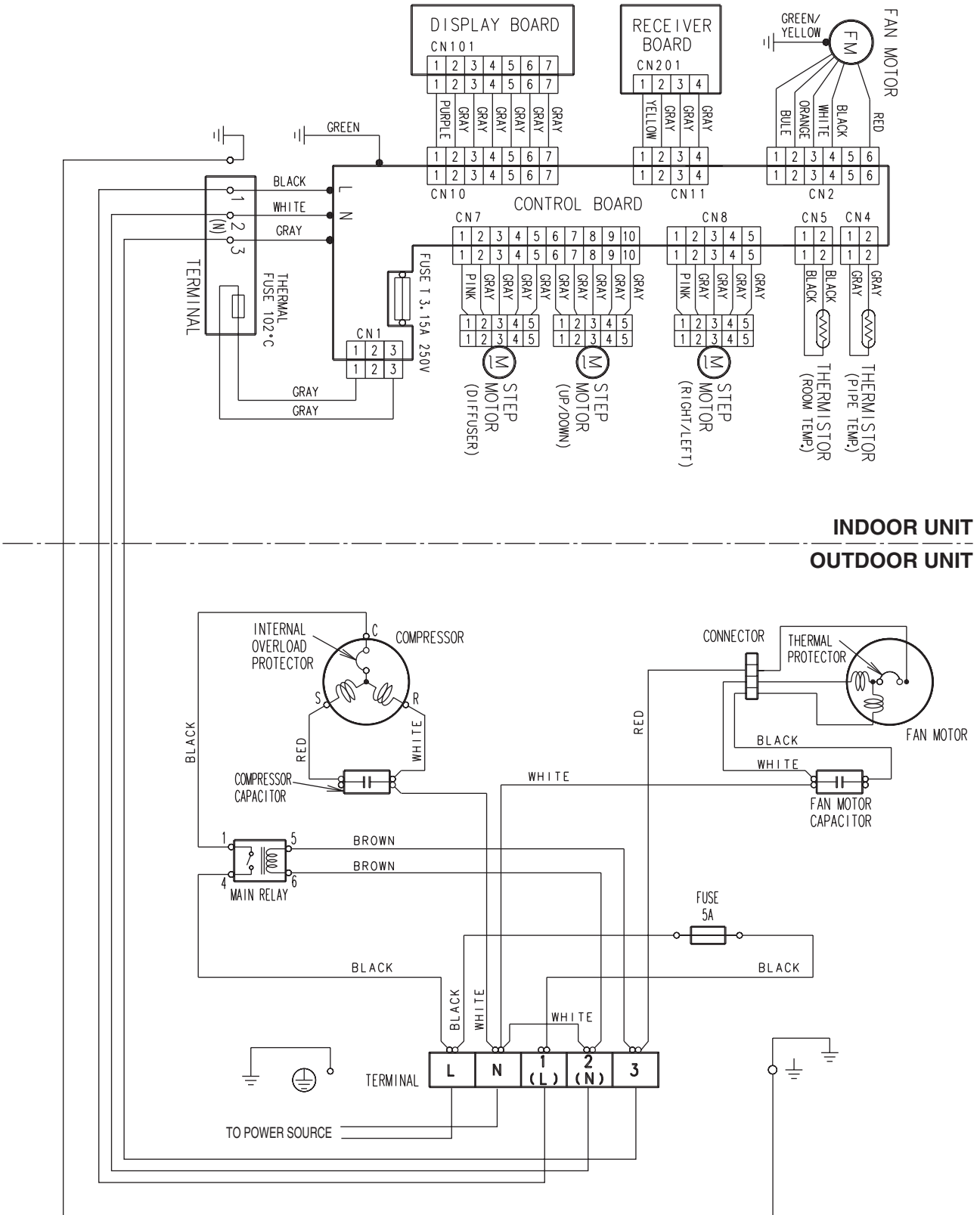
Models : AWG24UBAJ / AOG24UNADL



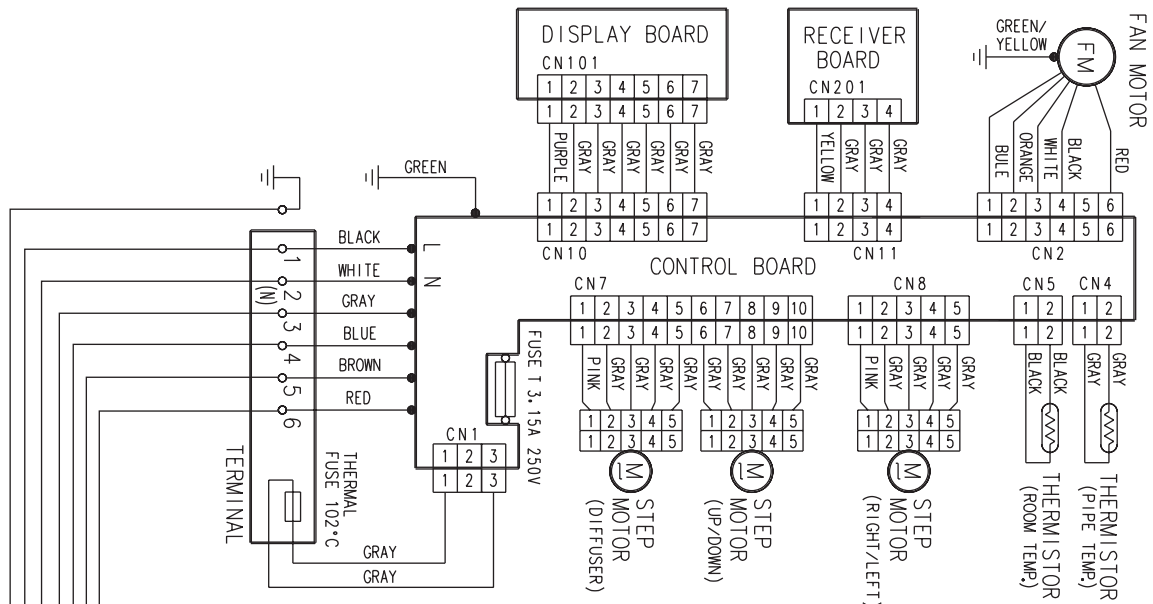
 Cooling
 Heating

CIRCUIT DIAGRAM

Models : AWG24FBAJ / AOG24FNAD

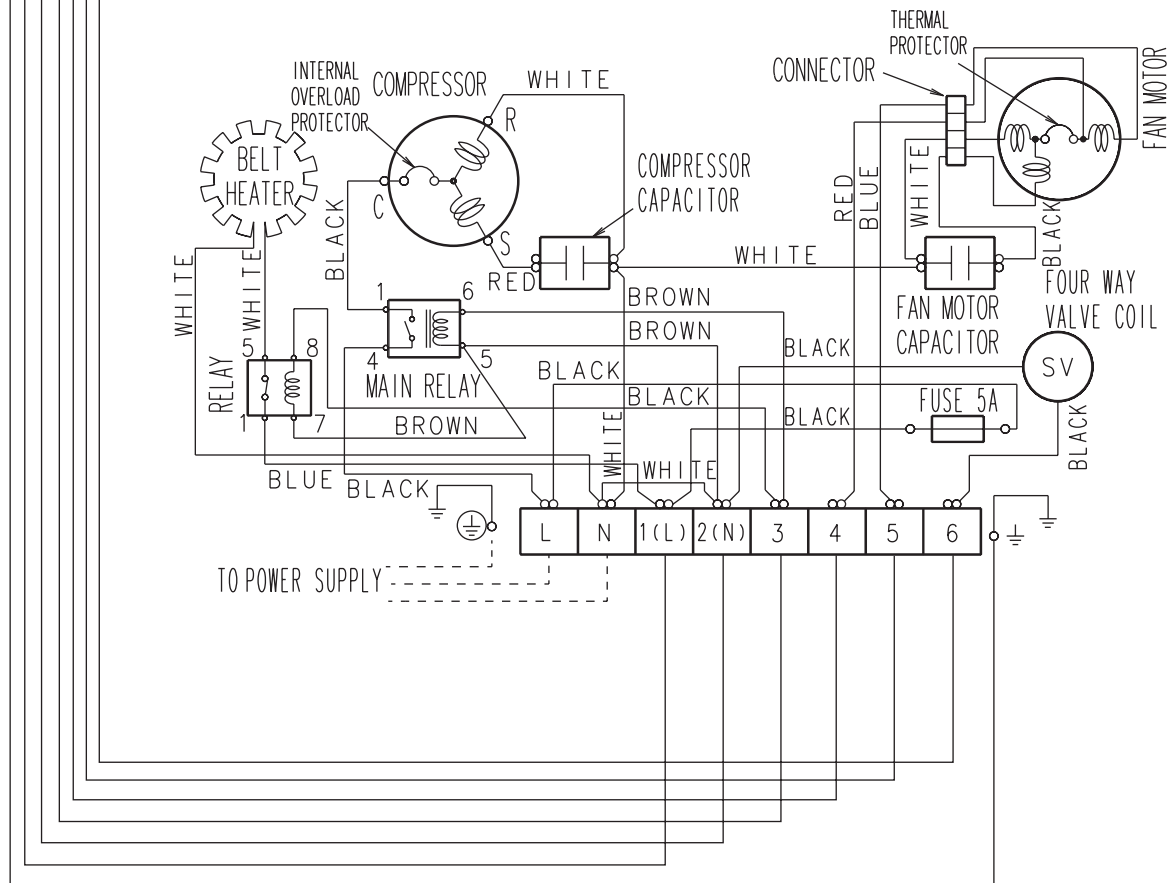


Models : AWG24UBAJ/ AOG24UNADL



INDOOR UNIT

OUTDOOR UNIT



E R R O R D I S P L A Y

● Error

The OPERATION, TIMER and SWING lamps operate as follows according to the error contents.

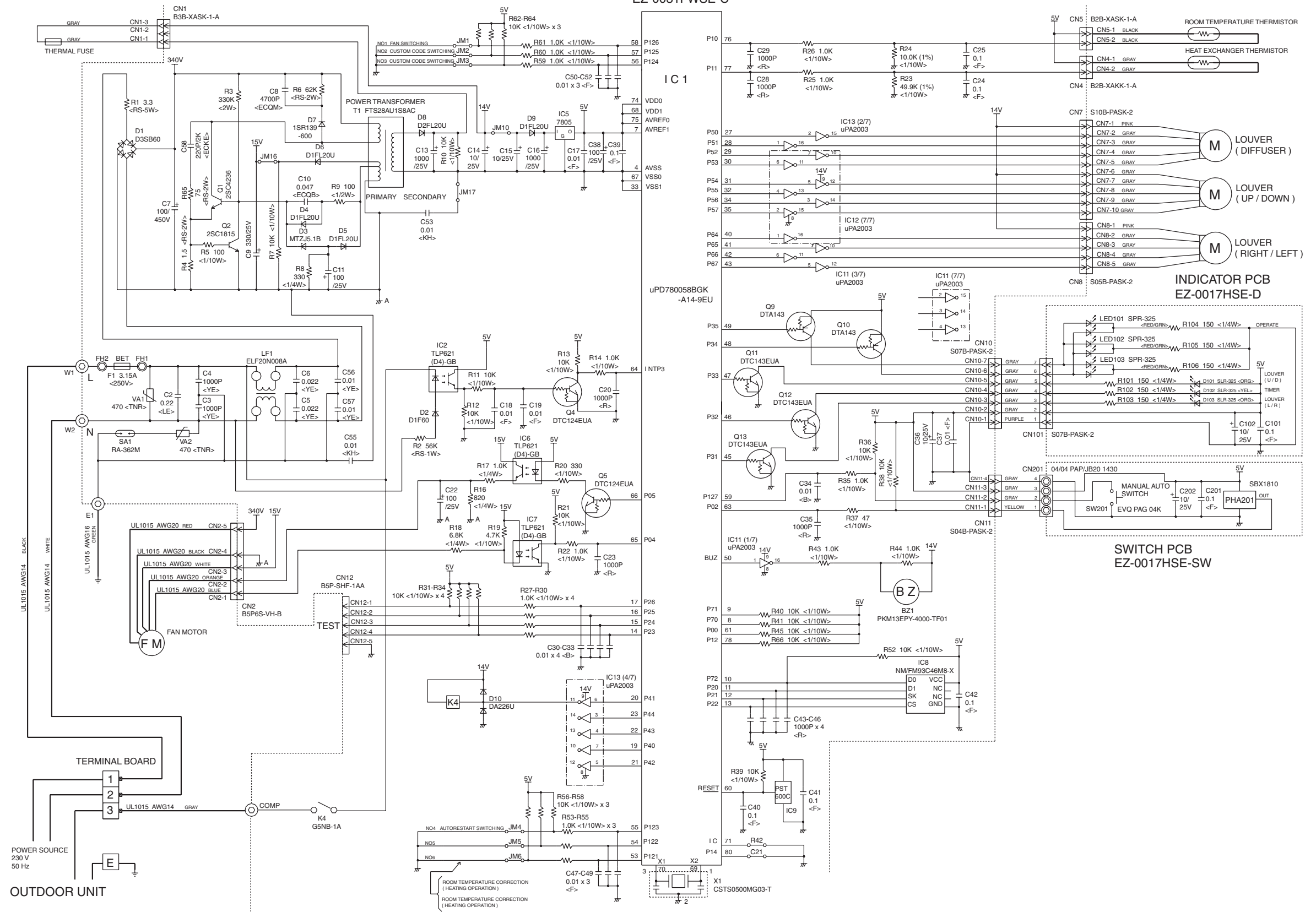
○ : Fast flashing ● : Slow flashing —: Off

Error contents	Error display		
	OPERATION (RED)	TIMER (YELLOW)	SWING (ORANGE)
Indoor unit circuit board error	○	○	—
Indoor unit room temperature sensor wire opened	2 times ●	○	—
Indoor unit room temperature sensor wire short circuited	2 times ●	○	○
Indoor unit piping sensor wire opened	3 times ●	○	—
Indoor unit piping sensor wire short circuited	3 times ●	○	○
Indoor unit fan error	6 times ●	○	—

INDOOR PRINTED CIRCUIT BOARD CIRCUIT DIAGRAM

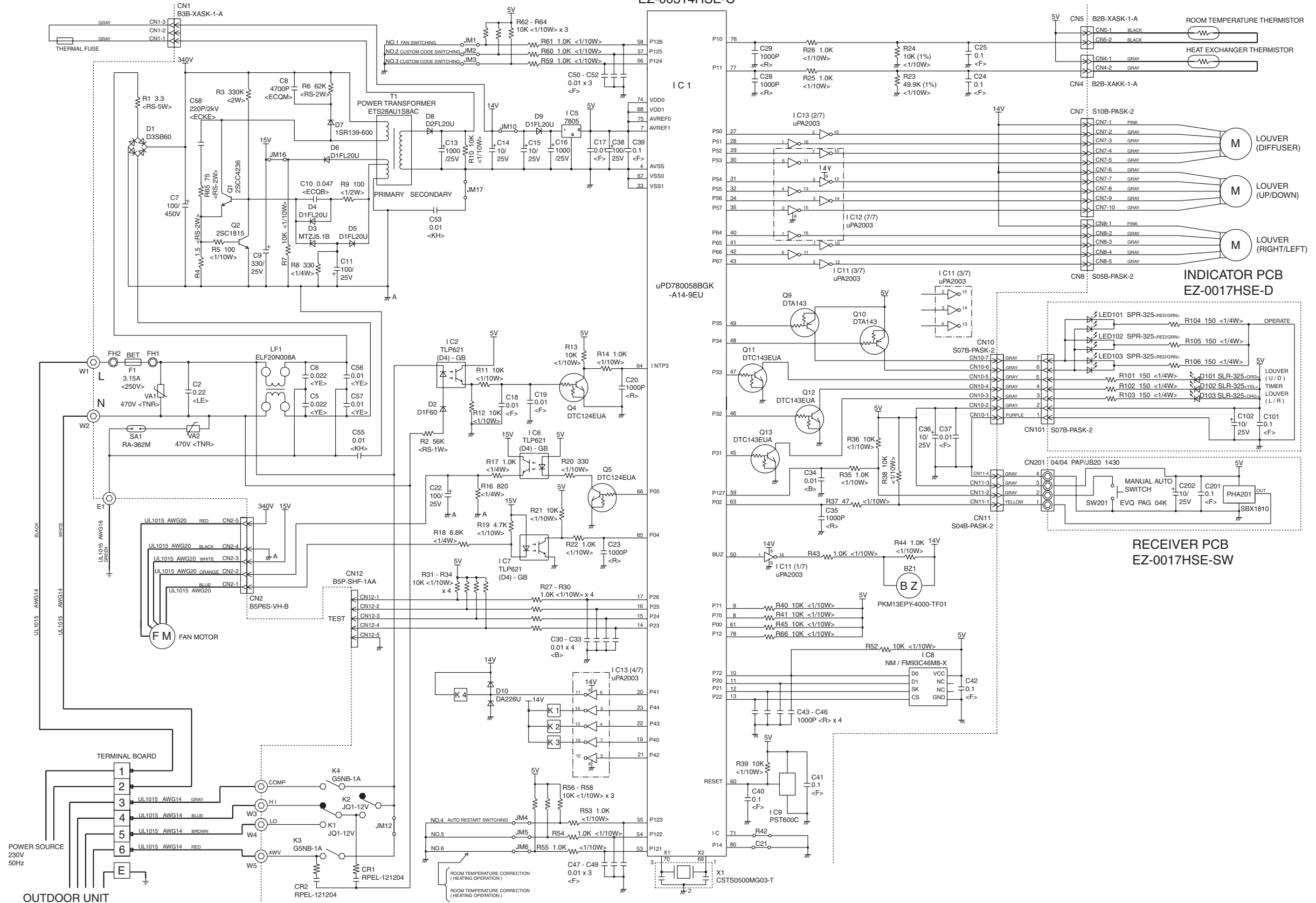
Model : AWG24FBAJ

CONTROLLER PCB ASSEMBLY (MAIN PCB) EZ-0031FWSE-C



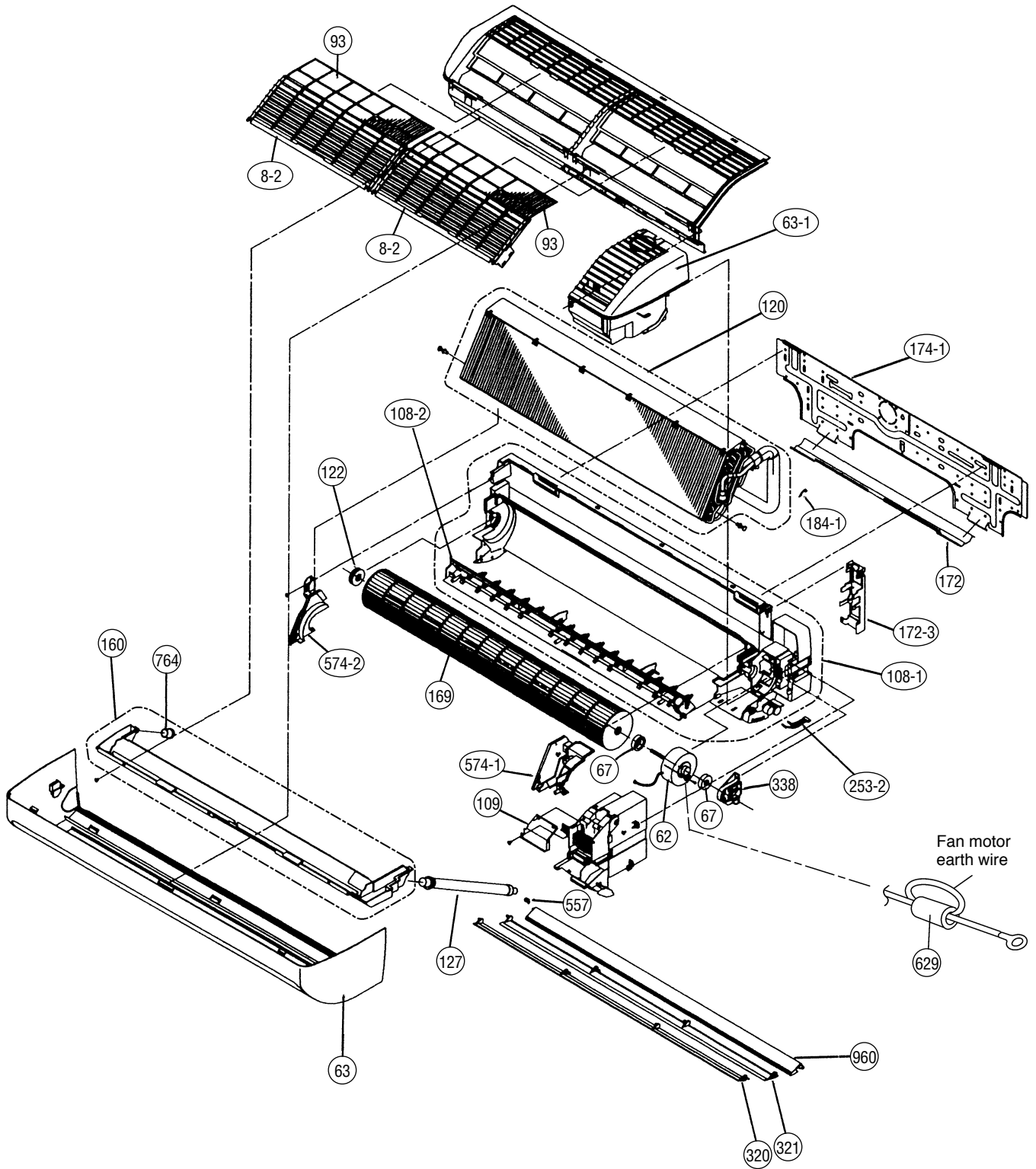
Model : AWG24UBAJ

CONTROLLER PCB ASSEMBLY (MAIN PCB)
EZ-00314HSE-C

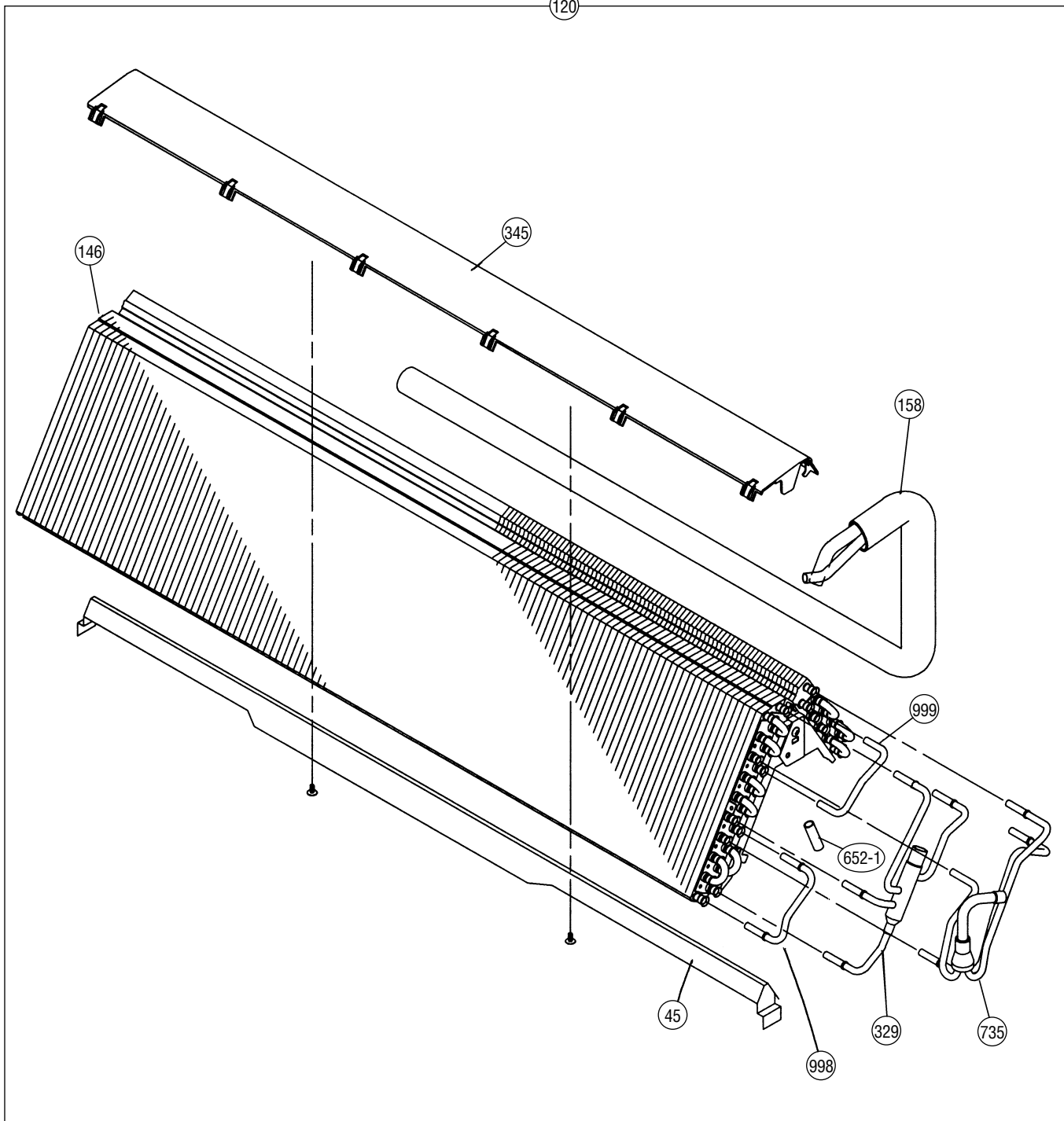


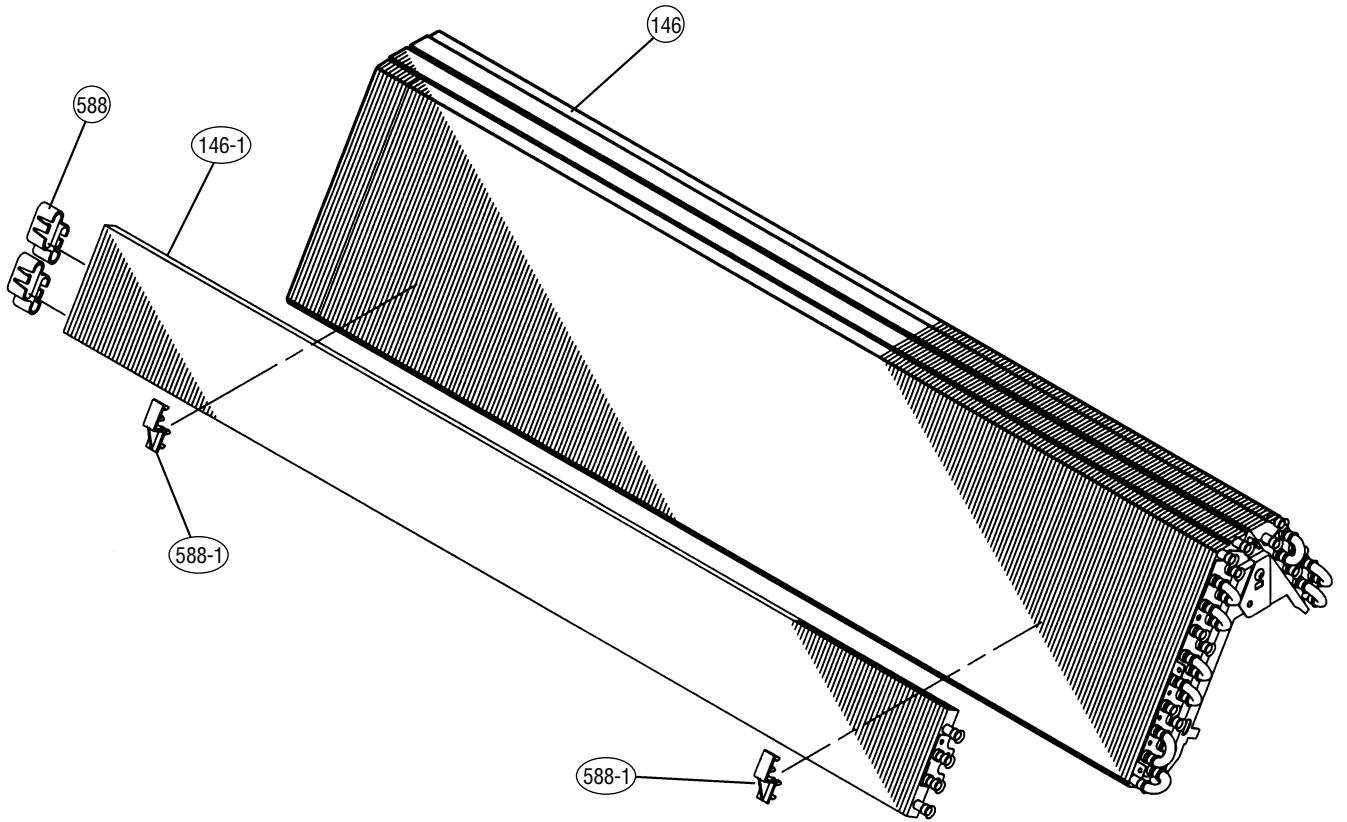
DISASSEMBLY ILLUSTRATION

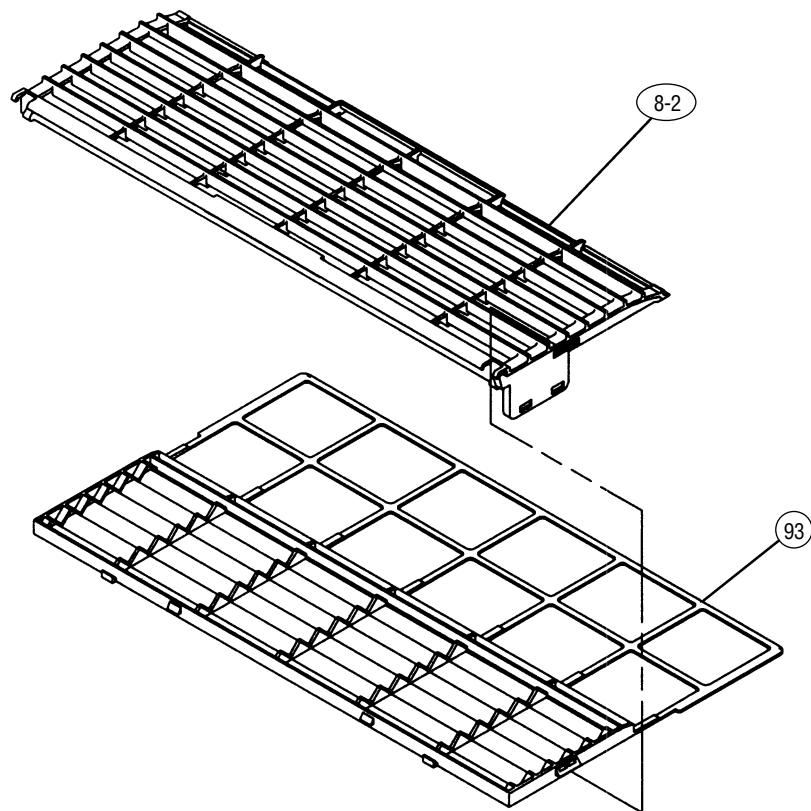
Models : AWG24FBAJ
AWG24UBAJ

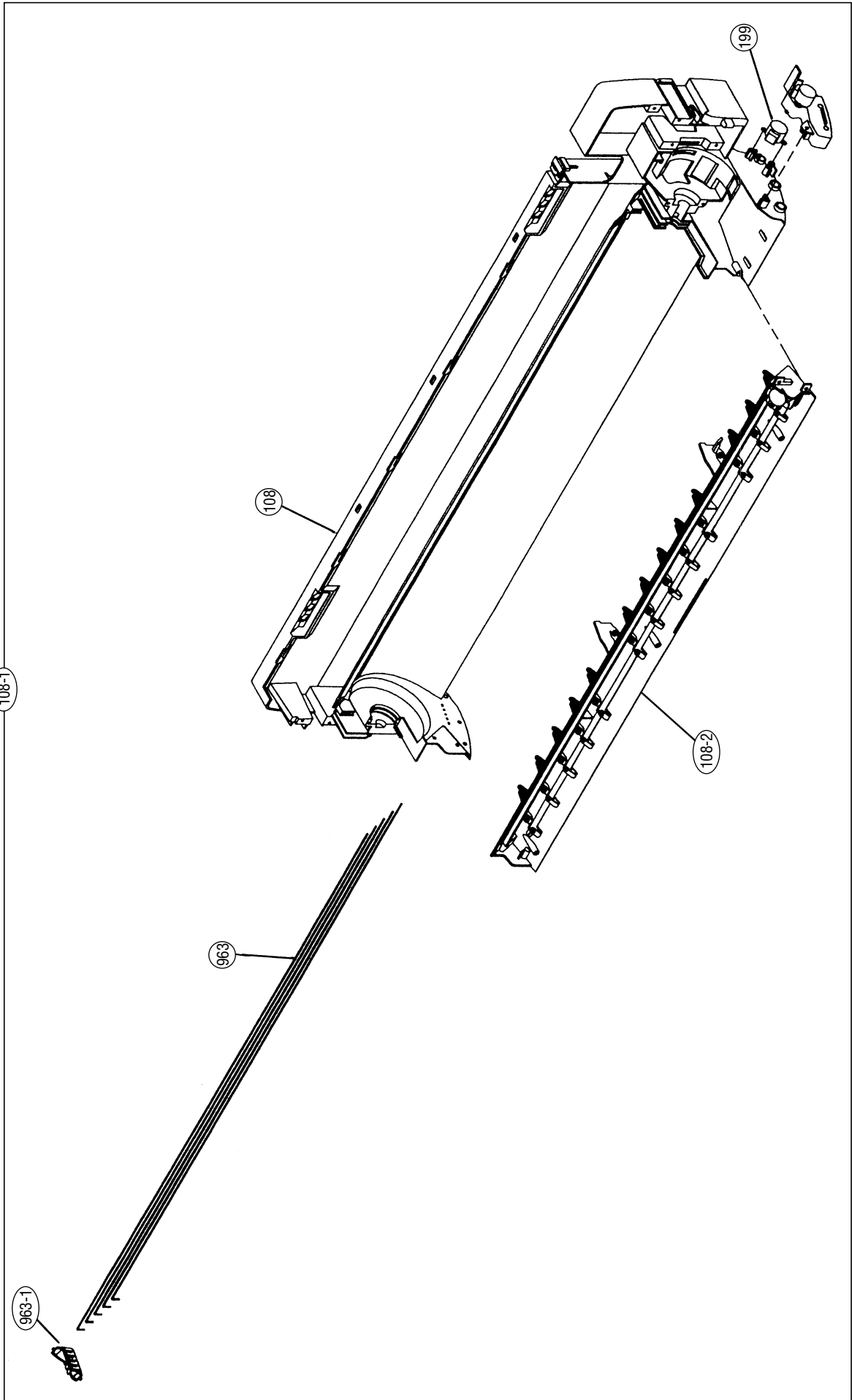


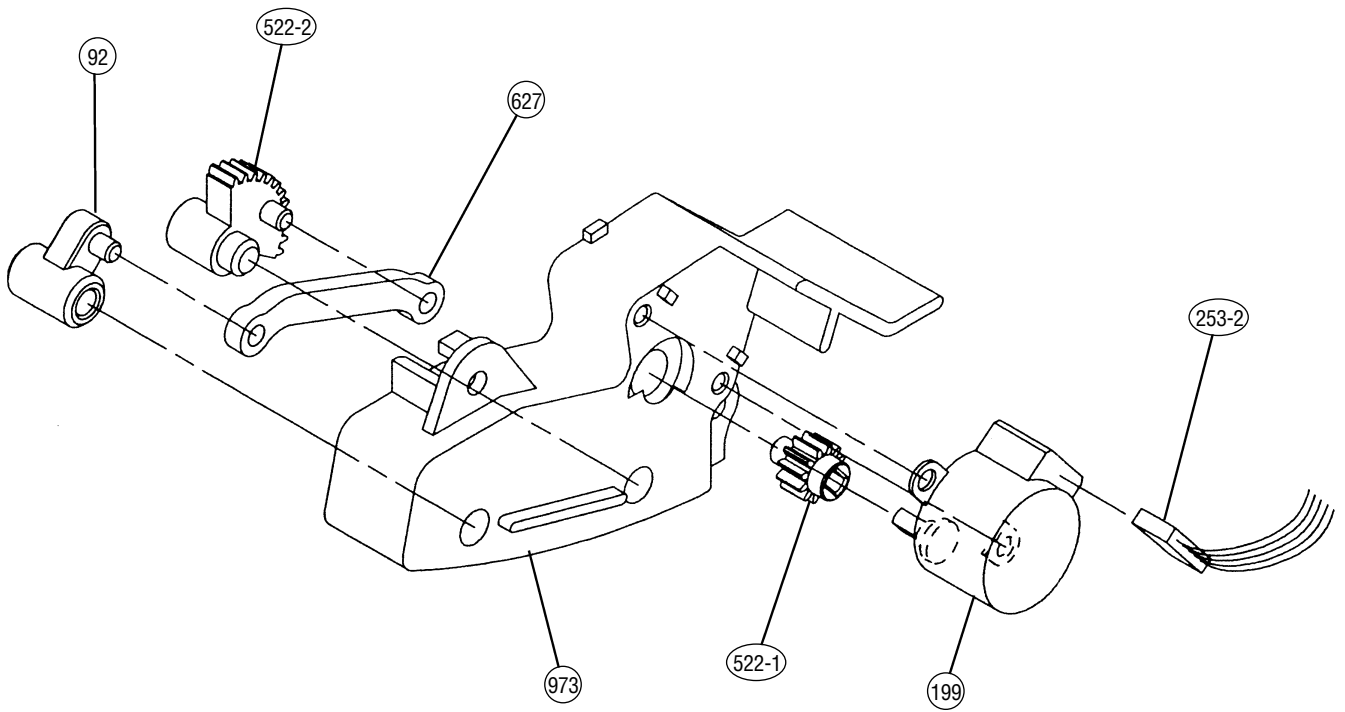
120



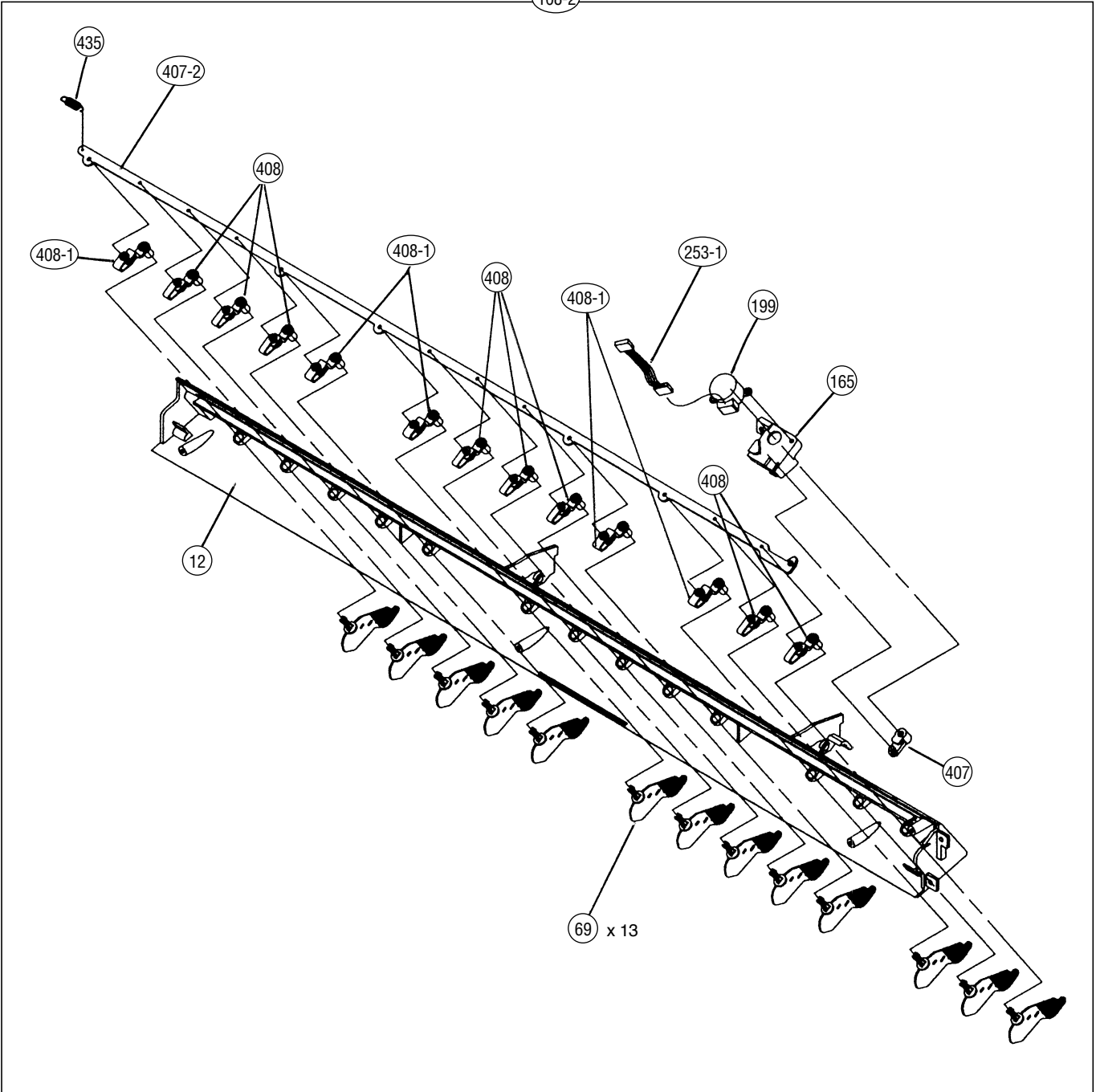


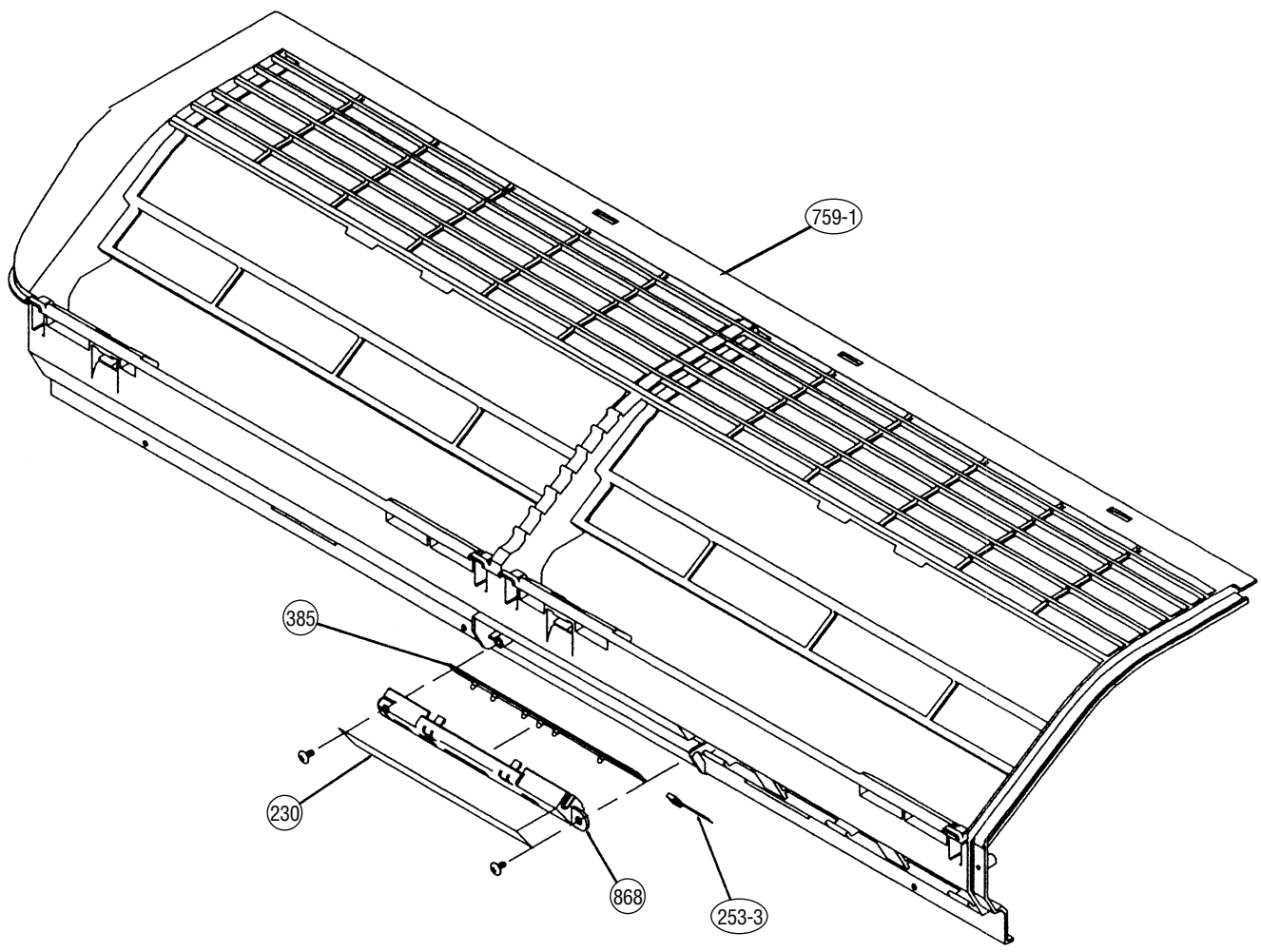




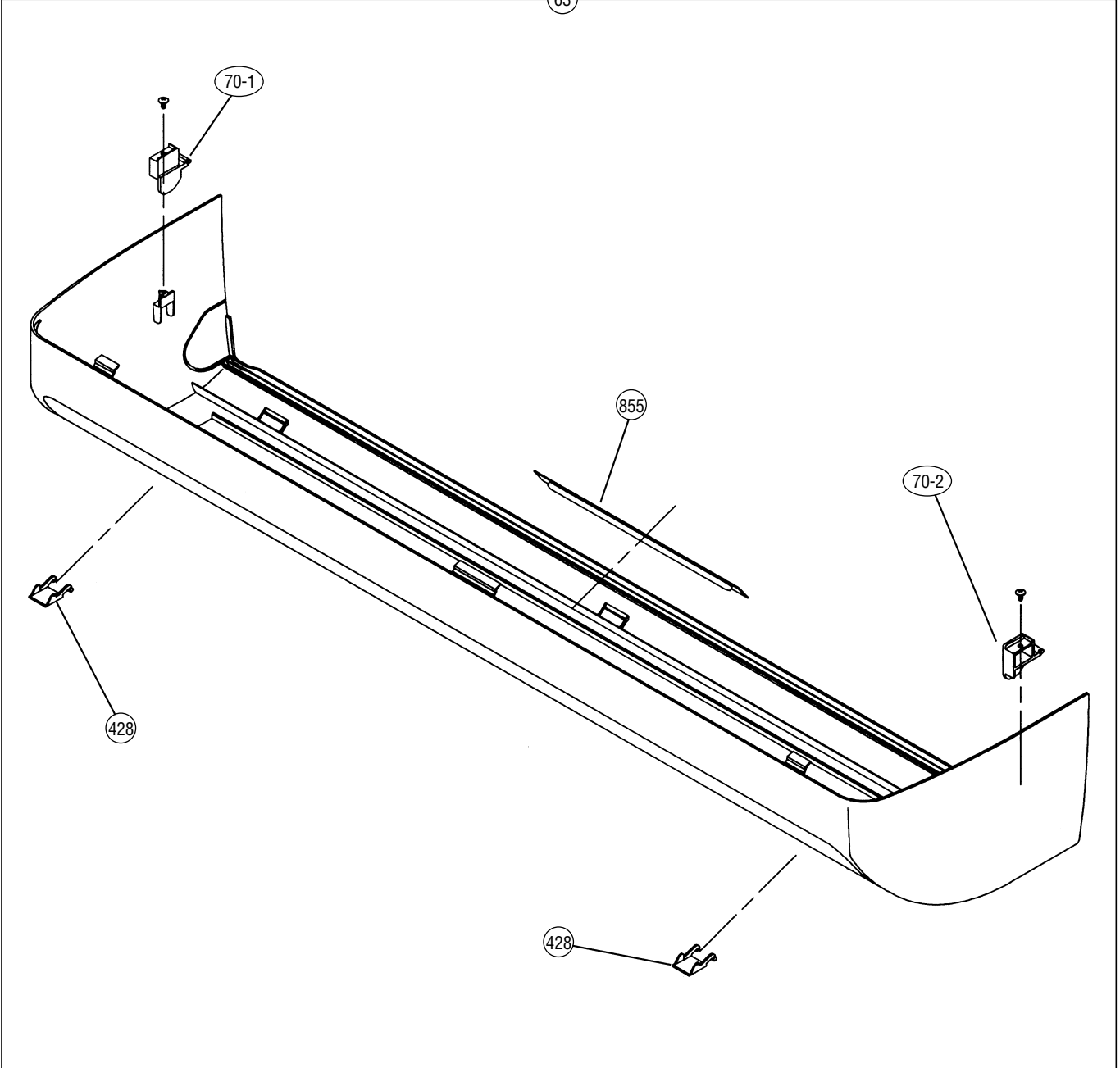


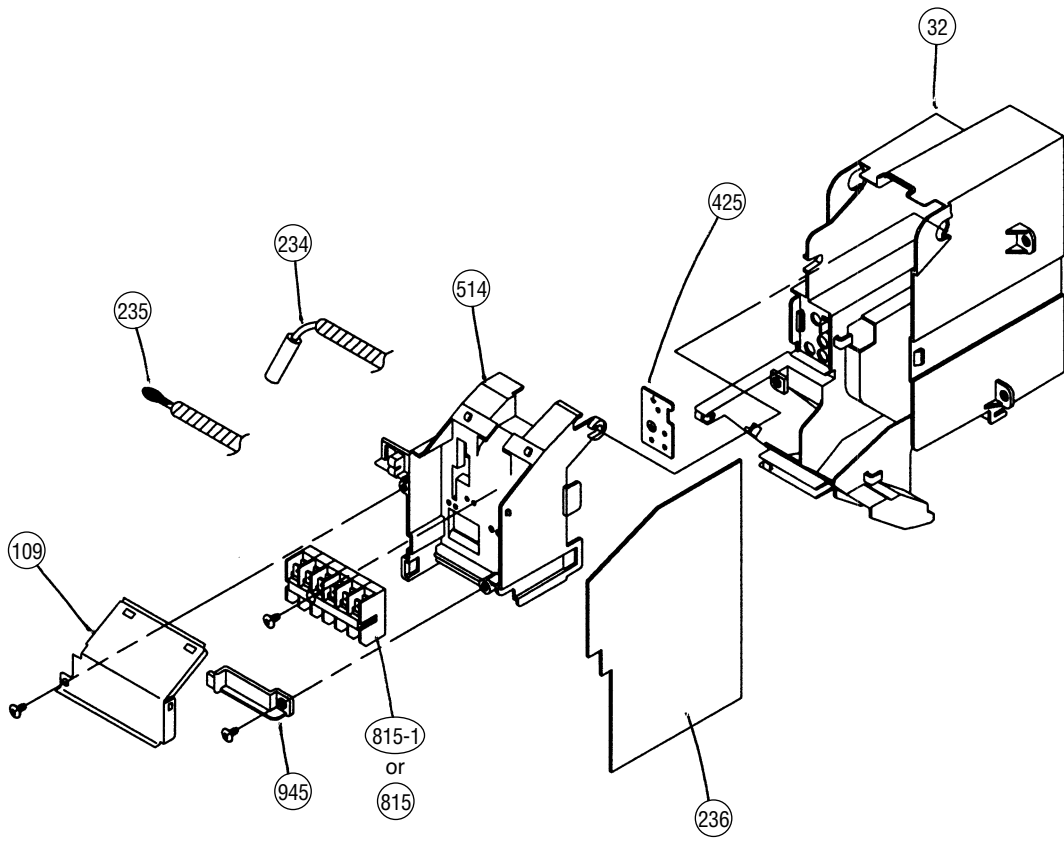
108-2



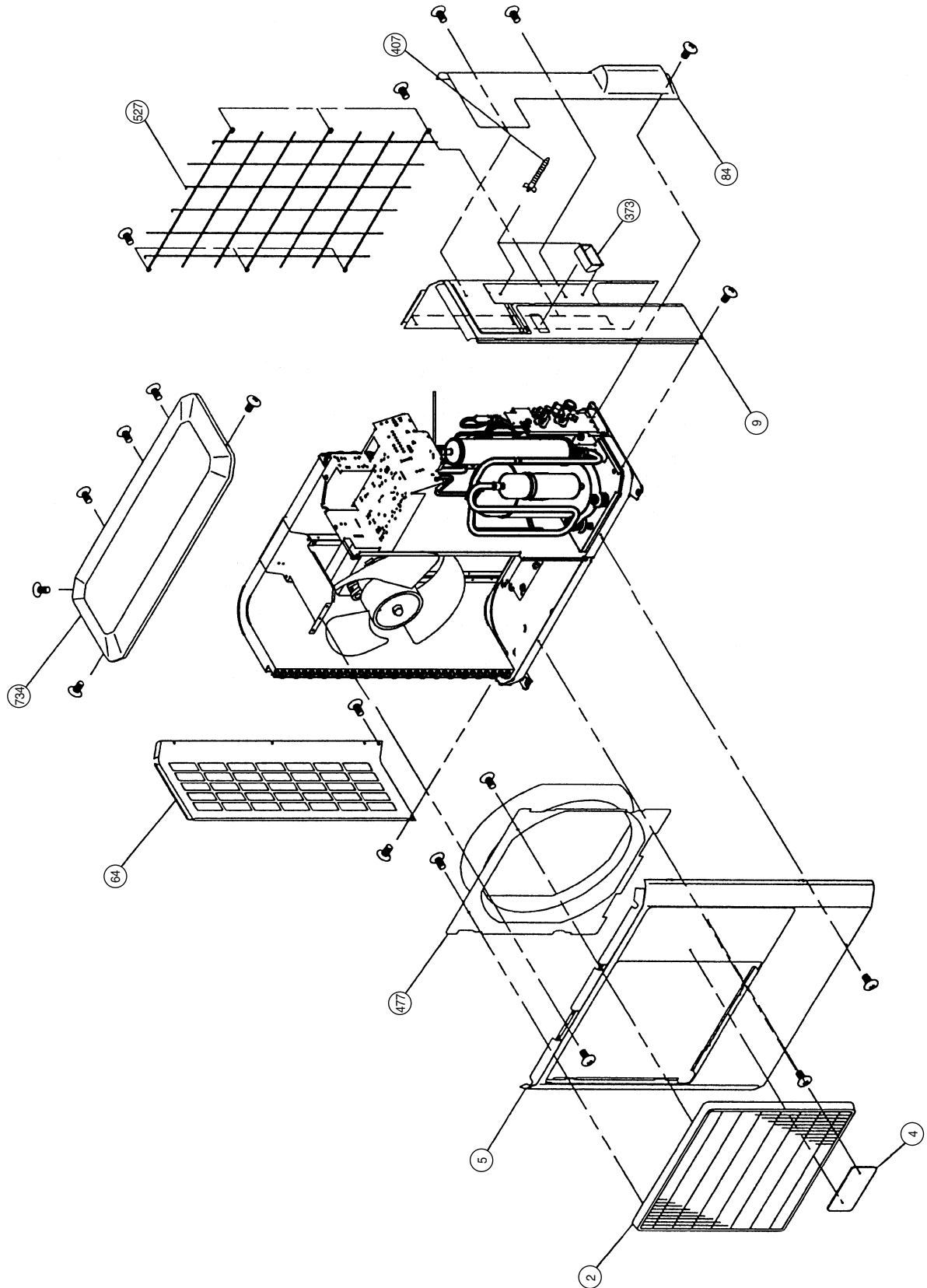


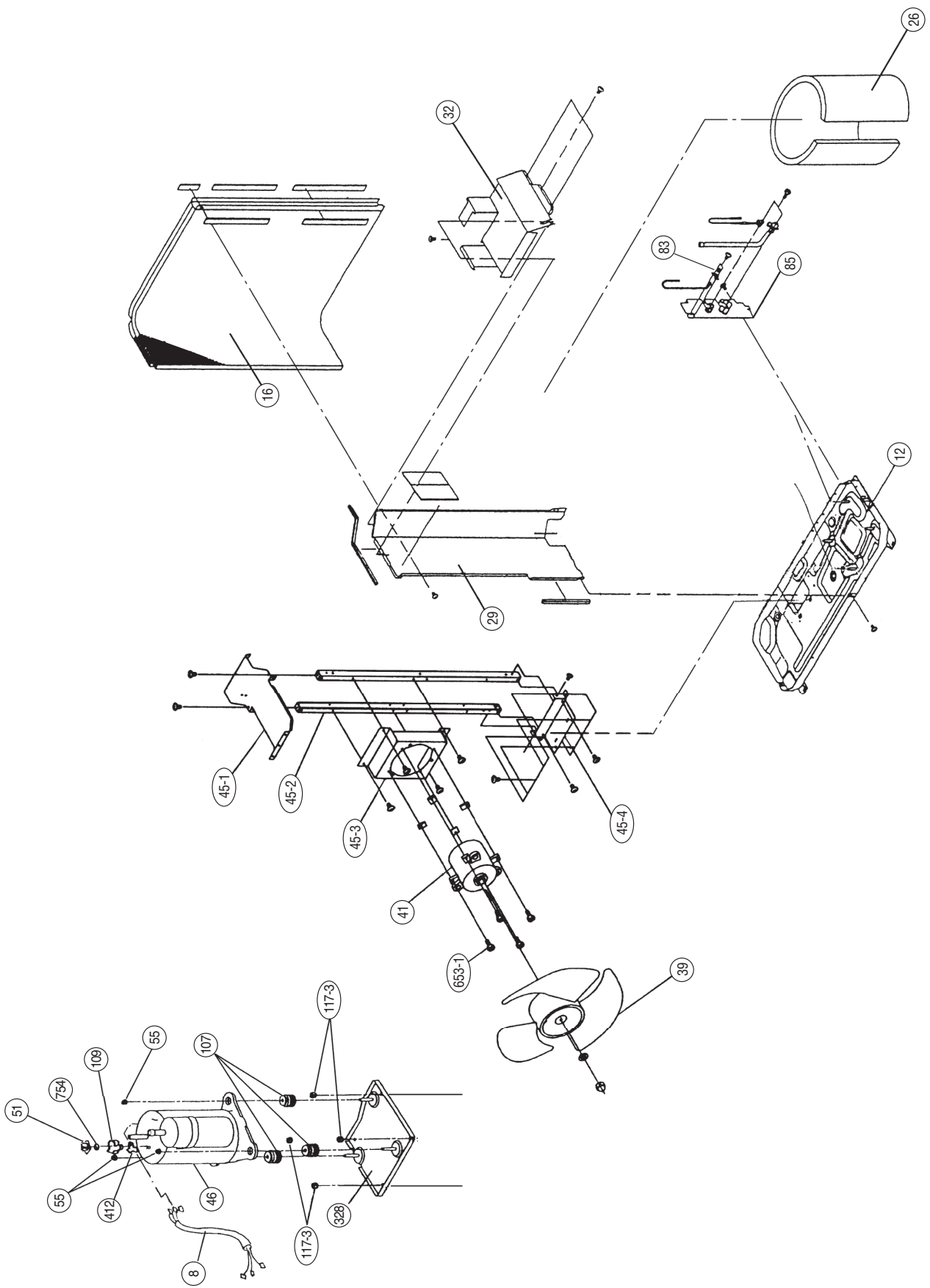
63



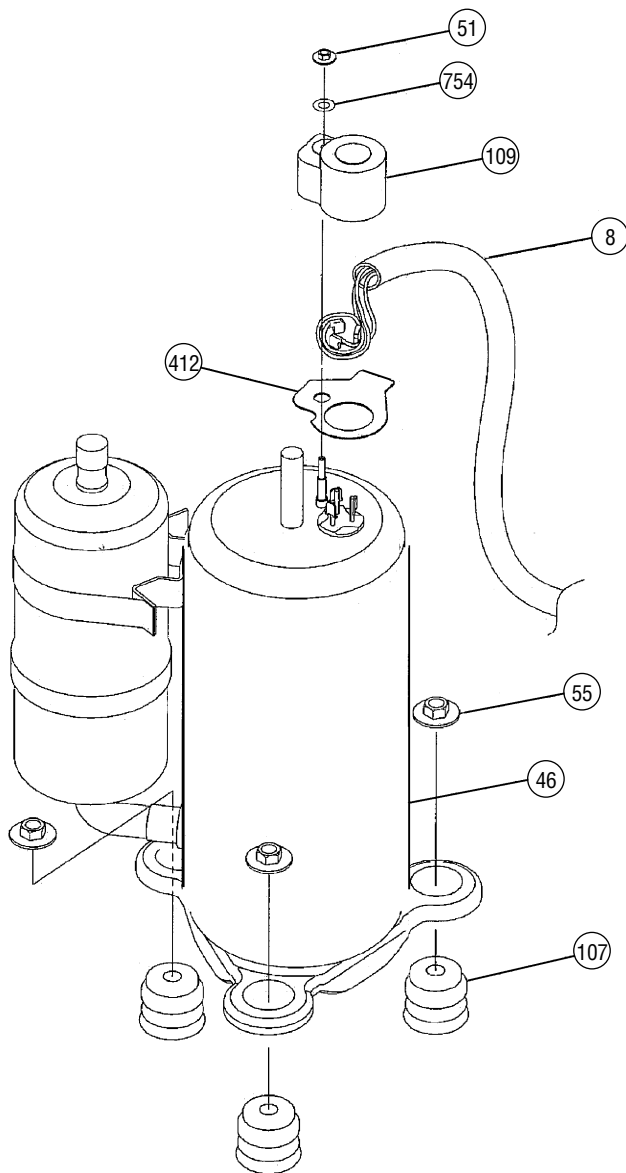


Models : AOG24FNAD
AOG24UNADL

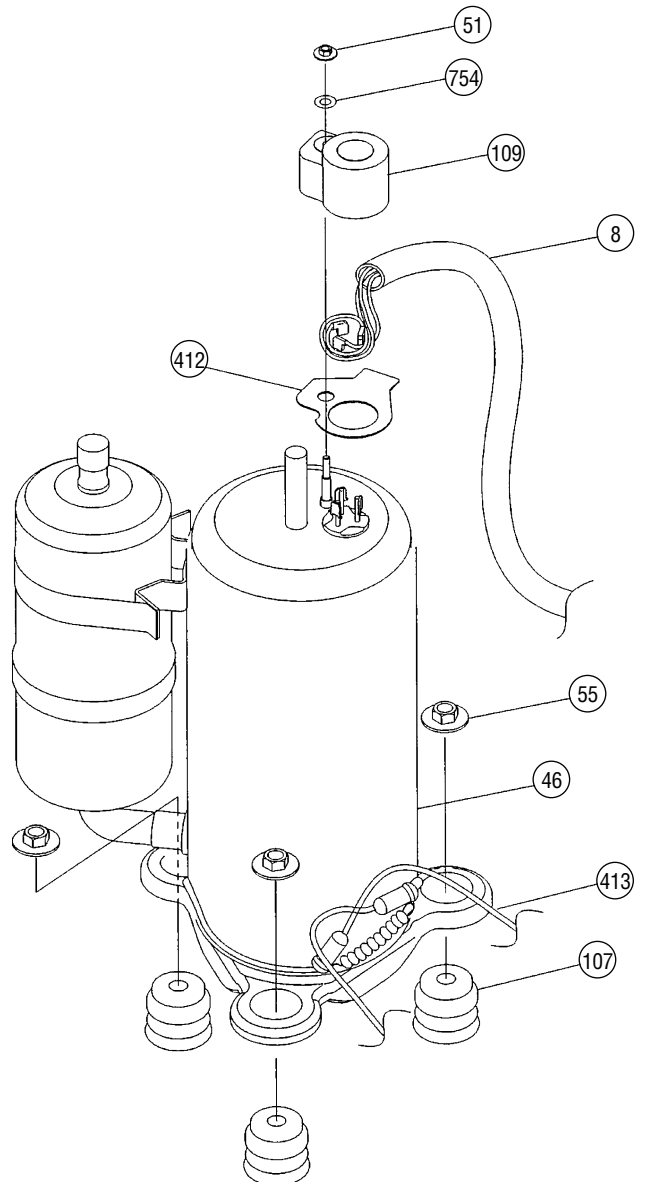




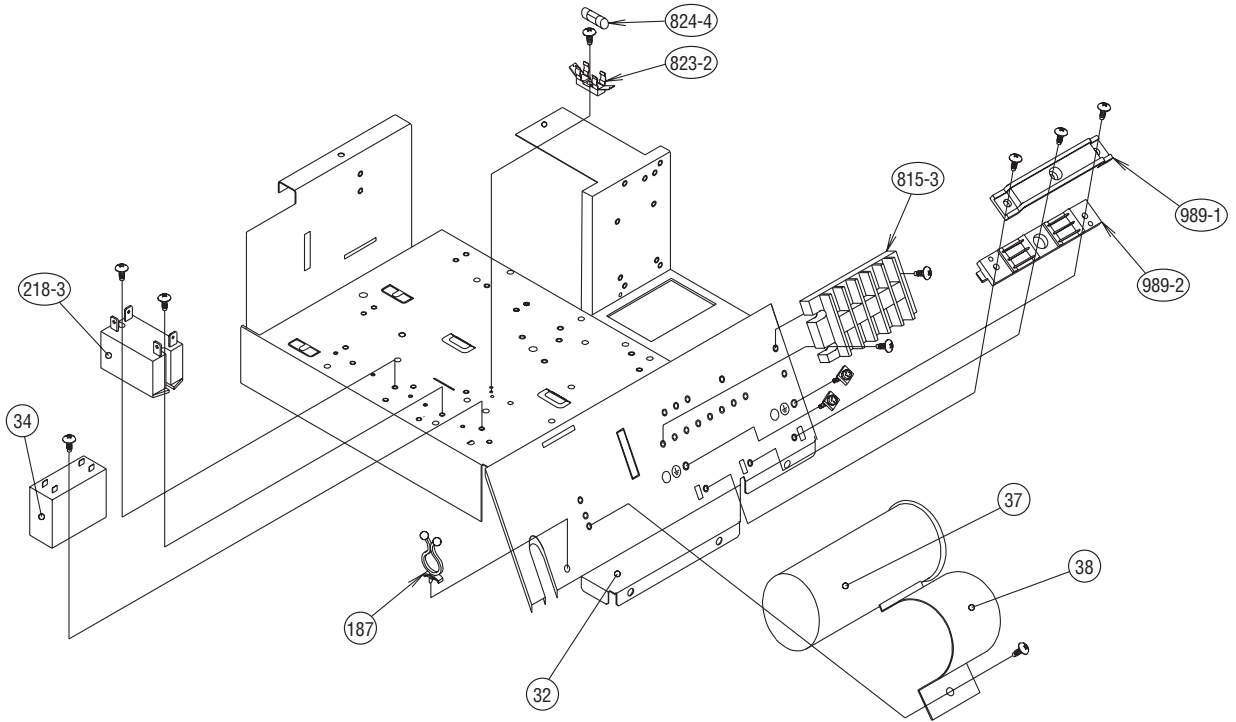
Model : AOG24FNAD



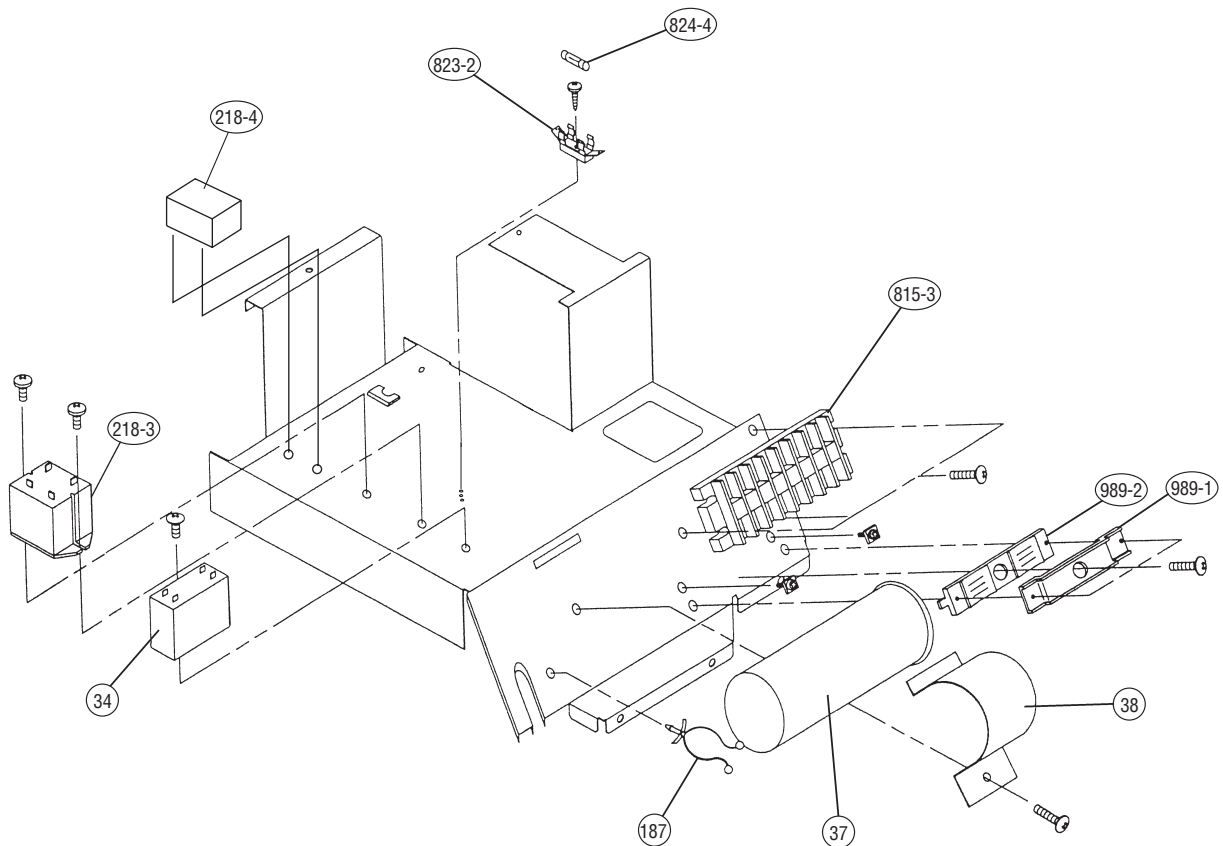
Model : AOG24UNADL



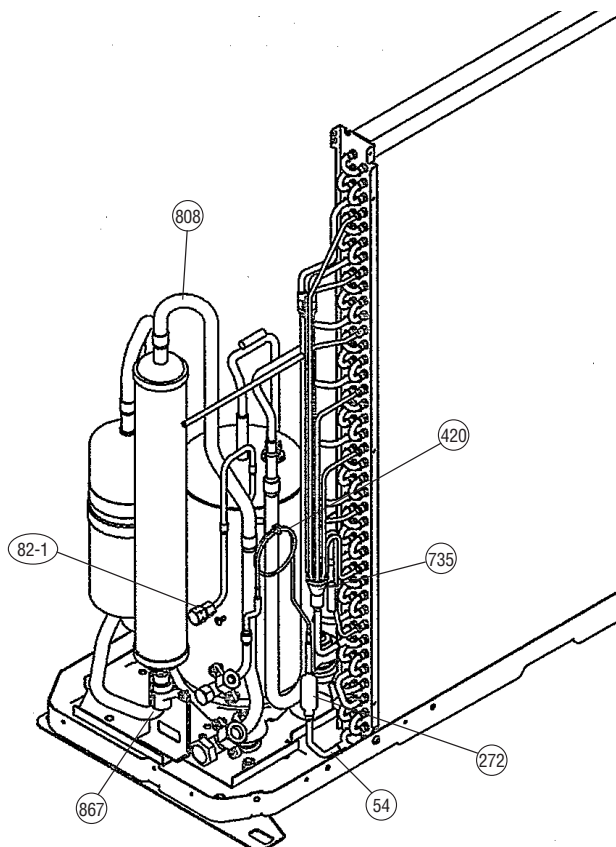
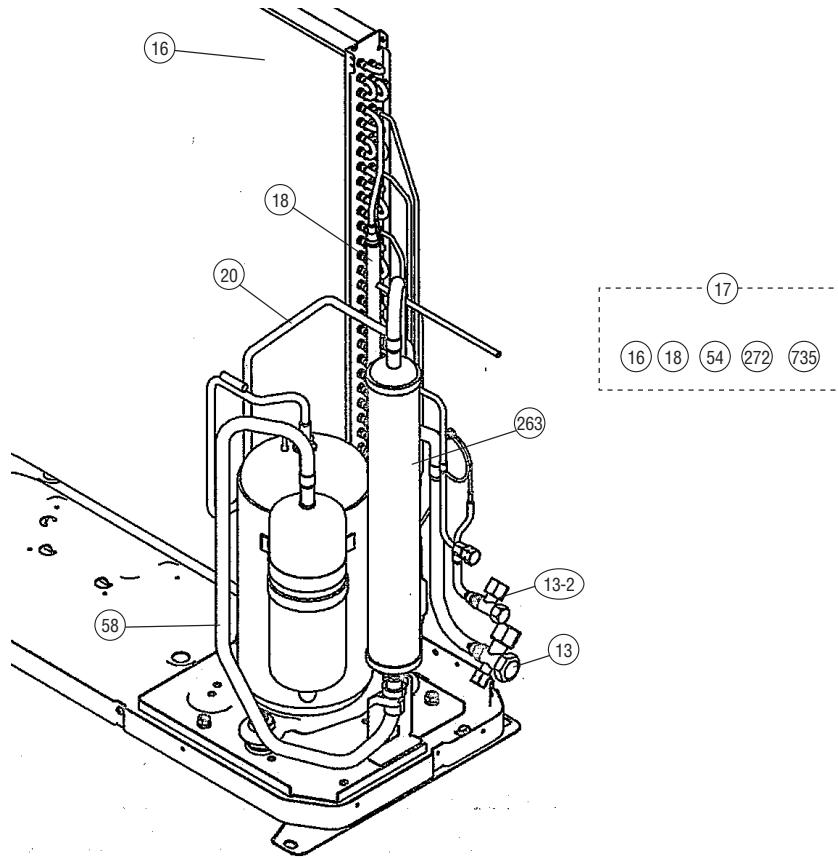
Model : AOG24FNAD



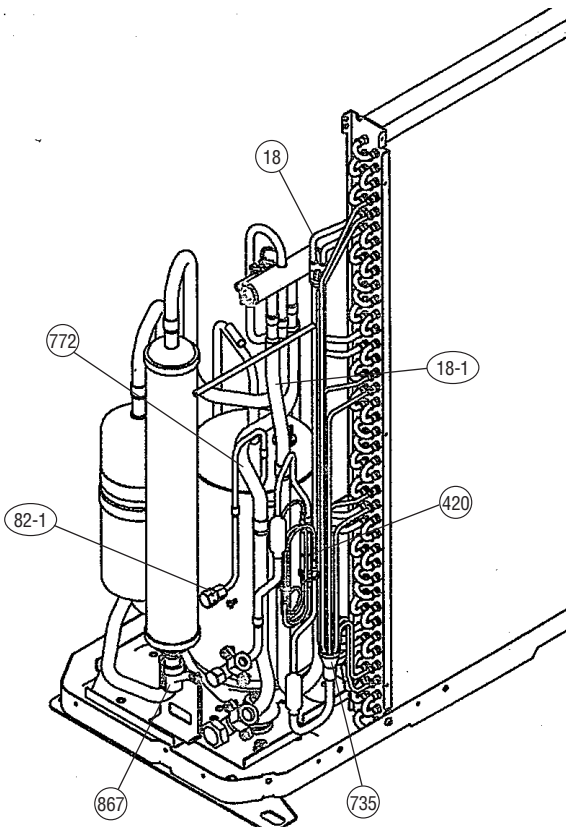
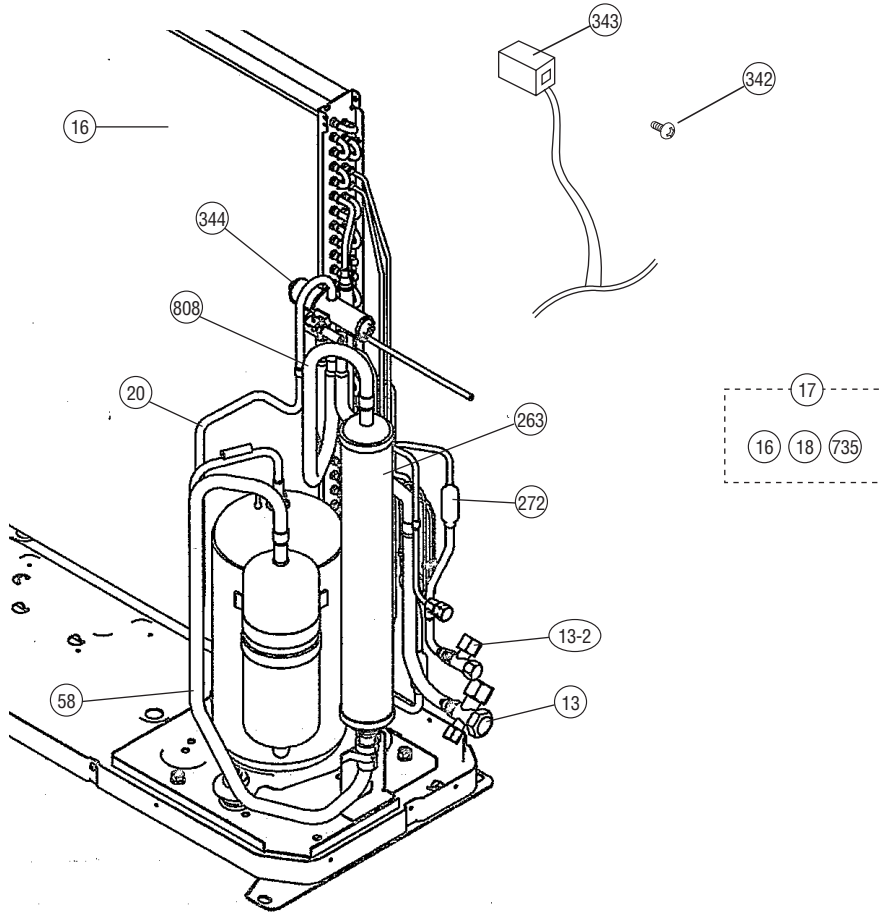
Model : AOG24UNADL



Model : AOG24FNAD



Model : AOG24UNAD



PARTS LIST

When you order parts, please make a photocopy of this page and fill the number of the parts in the "Order" column.

INDOOR UNIT

Ref. No.	Description	Part No.		Ord. Q'ty	Ref. No.	Description	Part No.		Ord. Q'ty
		AWG24FBAJ	AWG24UBAJ				AWG24FBAJ	AWG24UBAJ	
8-2	Filter Frame	9367681013	9367681013		320	Upper Flap	9367688012	9367688012	
12	Base-B	9368216016	9368216016		321	Lower Flap	9367689019	9367689019	
32	Control Box	9367663002	9367663002		329	Coupling Pipe Assy	9370561005	9370561005	
45	Bracket (Evaporator) Assy	9369317019	9369317019		338	Motor Holder	9367798001	9367798001	
62	Fan Motor-IN	9601385028	9601385028		-	Wire w/Connector CN101	9704433015	9704433015	
63	Front Cover Sub Assy	9371132020	9371132020		385	Indicator PCB Assy	9704368010	9704368010	
63-1	Service Cover Assy	9368837013	9368837013		407	Motor Link	9367696000	9367696000	
67	Rubber (Motor)	9367676002	9367676002		407-2	LOUVER Rod	9367698004	9367698004	
69	Louver	9367706013	9367706013		408	Louver Link	9367697007	9367697007	
70-1	Hook (Cover)-L	9367675012	9367675012		408-1	Louver Link-B	9368789008	9368789008	
70-2	Hook (Cover)-R	9367674015	9367674015		425	Earth Plate	9368017002	9368017002	
92	Link Holder	9367694006	9367694006		428	Screw Cover	9367717019	9367717019	
93	Filter	9367680016	9367680016		435	Louver Spring	9369030000	9369030000	
108	Base-B	9367683017	9367683017		514	Control Box Cover	9367664009	9367664009	
108-1	Base Assy	9368829049	9368829018		522-1	Gear-A	9367691005	9367691005	
108-2	Base-B Sub Assy	9368843014	9368843014		522-2	Gear-B	9367692002	9367692002	
109	Terminal Cover	9368022006	9368022006		557	Diffuser Spring	9368824006	9368824006	
120	Evaporator Sub Assy	9368832056	9368832056		574-1	Evaporator Support-R	9367684007	9367684007	
122	Rubber (Bearing) Assy	9368998004	9368998004		574-2	Evaporator Support-L Assy	9371129013	9371129013	
127	Drain Hose	9367695003	9367695003		588	Evaporator Holder	9367711000	9367711000	
146	Evaporator Assy	9370559002	9370559002		588-1	Evaporator Holder-B	9368783006	9368783006	
146-1	Evaporator Assy-B	9369124006	9369124006		627	Link Holder	9367693009	9367693009	
158	Joint Pipe Assy	9369144004	9369144004		629	EMI Filter	0400056133	0400056133	
160	Drain Pan Assy	9368835026	9368835026		652-1	Thermistor Holder Pipe	313806262805	313806262805	
165	Motor Box	9367718009	9367718009		735	Distributor Assy	9370560008	9370560008	
169	Crossflow Fan Assy	9367708000	9367708000		743	Remote Control Unit Holder Case	9305642014	9305642014	
172	Pipe Bracket	9367844005	9367844005		759-1	Intake Cover	9367678013	9367678013	
172-3	Pipe Holder Assy	9371135014	9371135014		764	Drain Cap	9367677009	9367677009	
174-1	Fixing Plate	9367987009	9367987009		815	Terminal	—	9900016012	
184-1	Thermistor Spring-A	313728262708	313728262708		815-1	Terminal-3P	9306489090	—	
199	Motor,Step	9900020019	9900020019		855	Display-G	9367673018	9367673018	
230	Diffusion Sheet	9368006013	9368006013		868	PCB Holder (Display)	9367679003	9367679003	
234	Room Temperature Thermistor	9703299148	9703299148		-	Wire w/Connector CN201	9704388018	9704388018	
235	Pipe Temperature Thermistor	9703297038	9703297038		875	Switch PCB Assy	9704370013	9704370013	
236	Controller PCB Assy	9704457080	9704360151		945	Wire Holder	9368016005	9368016005	
240	Remote Control Unit	9371190020	9371190013		960	Diffuser Assy	9368840013	9368840013	
253-1	Wire w/Connector	9704434012	9704434012		963	Fan Guard	9368015008	9368015008	
253-2	Wire w/Connector	9704435019	9704435019		963-1	Fan Guard Holder	9367707003	9367707003	
253-3	Wire w/Connector	9704433015	9704433015		973	Gear Box	9367690008	9367690008	

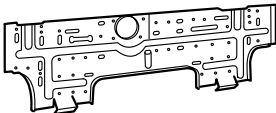
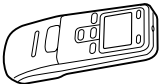
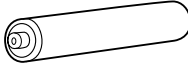
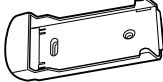
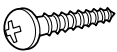

When you order parts, please make a photocopy of this page and fill the number of the parts in the "Order" column.

OUTDOOR UNIT


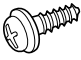
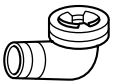
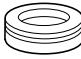
Ref. No.	Description	Part No.		Ord. Q'ty	Ref. No.	Description	Part No.		Ord. Q'ty
		AOG24FNAD	AOG24UNADL				AOG24FNAD	AOG24UNADL	
2	Fan Cover (Guard)	9371187013	9371187013		85	Valve Fixing Plate	9359806011	9359806011	
4	Emblem-Rear	313791088308	313791088308		107	Rubber Mount	9351049010	9351049010	
5	Cabinet-A, Painted	9359797029	9359797029		109	Terminal Cover	9371511016	9371511016	
8	Wire Assy (Compressor)	9370945072	9370945072		117-3	Hex. Nut w/Spring Washer	301721180114	301721180114	
9	Cabinet-B, Painted	9359798026	9359798026		187	Clamp No. 1219	313361271706	313361271706	
12	Base Assy, Painted	9359813019	9359813019		218-3	Power Relay	9900074012	9900074012	
13	3-Way Valve Assy (5/8)	9372205037	9372205037		218-4	Relay	—	9900183011	
13-2	2-Way Valve Assy (3/8)	9372204047	9372204047		263	Accumulator	9385005006	9385005006	
16	Condenser Assy	9372866016	9372866023		272	Strainer	9369287008	9369287008	
17	Condenser Sub Assy	9360274199	9360274175		328	Comp. Plate Assy	9362273060	9362273060	
18	Inlet Pipe (Condenser) Assy	9372185049	9372185063		342	Screw (Solenoid Valve)	—	9970024016	
20	Discharge Pipe Assy	9372318034	9372873014		343	Solenoid	—	9900196011	
26	Compressor Cover	9369093005	9369093005		344	4-Way Valve	—	9900163013	
29	Separate Wall	9359804017	9359804017		373	Grip	9352157004	9352157004	
32	Control Box Metal	9359839019	9359839019		407	Clamp (Cable) No. 1259	313739340109	313739340109	
34	Capacitor (Fan Motor)	9703306051	9703306051		412	Cover Gasket	9371512013	9371512013	
37	Running Capacitor	9703107023	9703107023		413	Heater (Crank Case)	—	9900132064	
38	Capacitor Clamp	9360610010	9360610010		420	Capillary Assy	9371287171	9371287164	
39	Propeller Fan	9359837015	9359837015		477	Bellmouth	9359809012	9359809012	
41	Fan Motor Assy-OUT	9601754022	9601754015		527	Protection Net	9359844013	9359844013	
45-1	Motor Bracket-A	9369627002	9369627002		653-1	Cup Screw	9385089020	9385089020	
45-2	Motor Bracket-B	9369628009	9369628009		734	Cabinet Top Plate Panel	9359799023	9359799023	
45-3	Motor Bracket-C	9369629006	9369629006		735	Distributor Assy	9372867044	9372867037	
45-4	Motor Bracket-D	9369630002	9369630002		754	Gasket Washer	9351053017	9351053017	
46	Compressor Assy	9372558041	9372558041		772	Joint Pipe (Valve)	—	9372876015	
51	Special Nut M5	9300301015	9300301015		808	Inlet Pipe (Accumulator)	9372879016	9372875018	
54	Condensing Pipe-B	9372907023	—		815-3	Terminal	9900203023	9900203047	
55	Special Nut M8	9355091008	9355091008		823-2	Fuse Holder	0500063024	0500063024	
58	Suction Pipe	9372872017	9372872017		824-4	Fuse Holder	0600222529	0600222529	
64	Cabinet Left, Painted	9359840022	9359840022		867	Accumulator Holder Rubber	9354022010	9354022010	
82-1	Check Joint	9372802014	9372802014		989-1	Cord Clamp-A	9359822011	9359822011	
83	Check Joint Bracket-A	9359807025	9359807025		989-2	Cord Clamp-B	9359823018	9359823018	
84	Valve Cover	9359817017	9359817017						

STANDARD ACCESSORIES

INDOOR UNIT ACCESSORIES

Name and Shape	Part No.
Wall hook bracket 	9367987009
Remote control unit 	9371190020 (AR-JW2) (Cool model)
	9371190013 (AR-JW1) [Heat & cool model (Reverse cycle)]
Battery (penlight) 	0600185534
Remote control unit holder 	9305642014
Tapping screw (big) (φ 4 x 20) 	301141164200
Tapping screw (small) (φ 3 x 12) 	301141533125

OUTDOOR UNIT ACCESSORIES

Name and Shape	Part No.
Cable clip 	313739340109
Tapping screw 	301463040100
Drain pipe 	9303029015 [Heat & cool model (Reverse cycle) only]
Drain cap 	313166024302 [Heat & cool model (Reverse cycle) only]

