



**SPLIT TYPE
AIR CONDITIONER**

CASSETTE type (50Hz)

SERVICE MANUAL



Models

Indoor unit

Outdoor unit

AUH30LUAS

AOH30LMBWL

AUH36LUAS

AOH36LMBWL

CONTENTS

| | |
|-----------------------------------|----|
| SPECIFICATIONS | 1 |
| DIMENSIONS | 2 |
| REFRIGERANT SYSTEM DIAGRAM | 4 |
| CIRCUIT DIAGRAM | 5 |
| INDOOR PCB CIRCUIT DIAGRAM | 6 |
| OUTDOOR PCB CIRCUIT DIAGRAM | 7 |
| ERROR CONTENTS | 10 |
| DISASSEMBLY ILLUSTRATION | 12 |
| PARTS LIST | 20 |
| STANDARD ACCESSORIES | 22 |

SPECIFICATIONS

| TYPE | COOLING & HEATING | |
|------------------|-------------------|------------|
| | INDOOR UNIT | AUH30LUAS |
| OUTDOOR UNIT | AOH30LMBWL | AOH36LMBWL |
| COOLING CAPACITY | 8.5 kW | 10.0 kW |
| HEATING CAPACITY | 10.0 kW | 11.2 kW |

ELECTRICAL DATA

| POWER SOURCE | | 230V 50Hz | |
|-------------------|----------------------|-----------|---------|
| RUNNING CURRENT | COOLING | 12.5 A | 17.6 A |
| | HEATING | 12.4 A | 15.2 A |
| INPUT WATTS | COOLING | 2.86 kW | 4.01 kW |
| | HEATING | 2.84 kW | 3.49 kW |
| E.E.R. (kW/kW) | COOLING | 2.97 | 2.49 |
| | HEATING | 3.52 | 3.21 |
| STARTING CURRENT | | 15 A | 15 A |
| MOISTURE REMOVAL | (ℓ/hr) | 3.0 | 4.0 |
| AIRCIRCULATION-Hi | (m ³ /hr) | 1,550 | |

COMPRESSOR

| | | |
|----------------|---|---------|
| TYPE | Total enclosed type, 4 poles, Inverter, Twin Rotary | |
| DISCRIMINATION | TNB220FPBM9 | |
| REFRIGERANT | R410A | 2,200 g |

FAN MOTOR

| | | |
|--------------|----------------|------------|
| INDOOR UNIT | DISCRIMINATION | MFA-54PZM |
| | HI-SPEED | 600 r.p.m. |
| | MED-SPEED | 490 r.p.m. |
| | LO-SPEED | 420 r.p.m. |
| | S-LO-SPEED | 300 r.p.m. |
| OUTDOOR UNIT | DISCRIMINATION | MFE-60PO |
| | COOL | 850 r.p.m. |
| | HEAT | 900 r.p.m. |

DIMENSIONS

| | | |
|--------------|-----------|--------------------|
| INDOOR UNIT | H x W x D | 296 x 830 x 830 mm |
| OUTDOOR UNIT | H x W x D | 830 x 900 x 330 mm |

WEIGHT

| | | |
|--------------|-------------|------------|
| INDOOR UNIT | GROSS / NET | 52 / 37 kg |
| OUTDOOR UNIT | GROSS / NET | 70 / 64 kg |

| TYPE | COOLING & HEATING | |
|--------------|-------------------|------------|
| | INDOOR UNIT | AUH30LUAS |
| OUTDOOR UNIT | AOH30LMBWL | AOH36LMBWL |

NOISE LEVEL

| | | | |
|--------------|-----------|---------|---------|
| INDOOR UNIT | HI-SPEED | 48.0 dB | |
| | MED-SPEED | 44.0 dB | |
| | LO-SPEED | 41.0 dB | |
| OUTDOOR UNIT | COOL | 53.0 dB | 54.0 dB |
| | HEAT | 55.0 dB | 55.0 dB |

Note : Static pressure : 30Pa

Duct length : Inlet 1m, Outlet 2m

REFRIGERANT CHARGE (R410A)

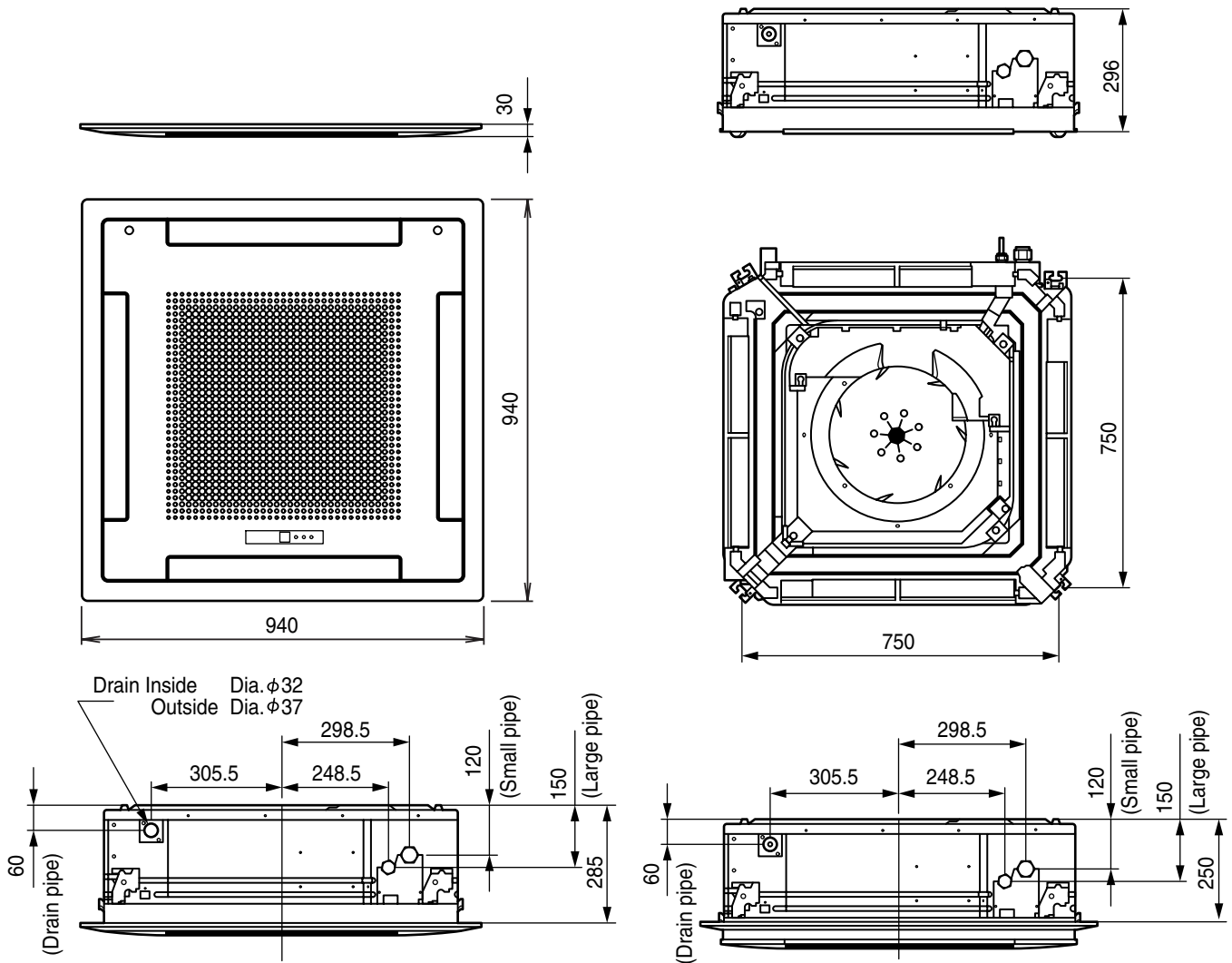
| | | | |
|------------------------|-------------|----------|---------|
| MAX PIPE LENGTH | | 50 m | |
| MAX PIPE HEIGHT | | 30 m | |
| FULL CHARGE AMOUNT | PIPE LENGTH | 15 m | 2,200 g |
| | | 20 m | 2,400 g |
| | | 30 m | 2,800 g |
| | | 40 m | 3,200 g |
| | | 50 m | 3,600 g |
| ADDITIONAL REFRIGERANT | | 40 g / m | |

DIMENSIONS

(Unit : mm)

INDOOR UNIT

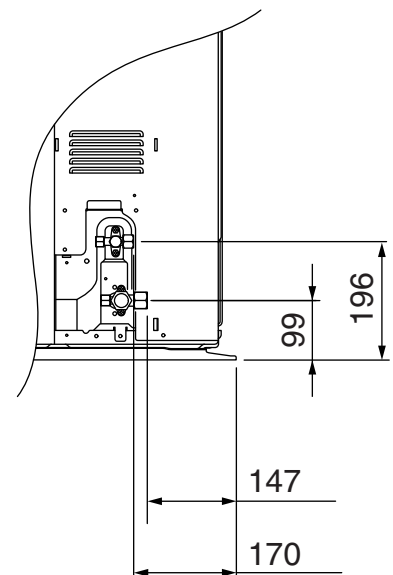
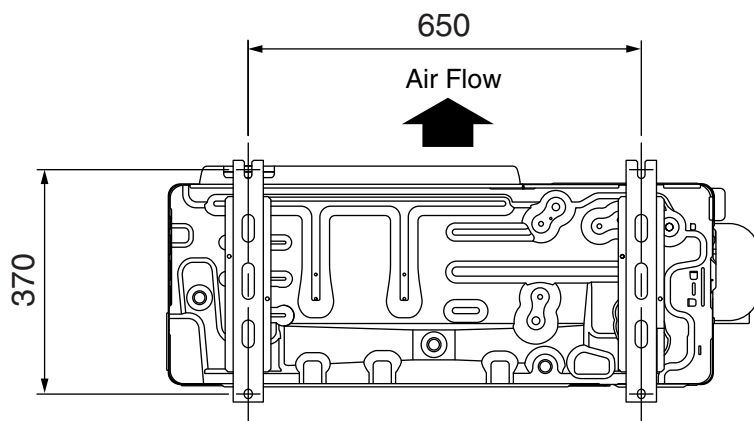
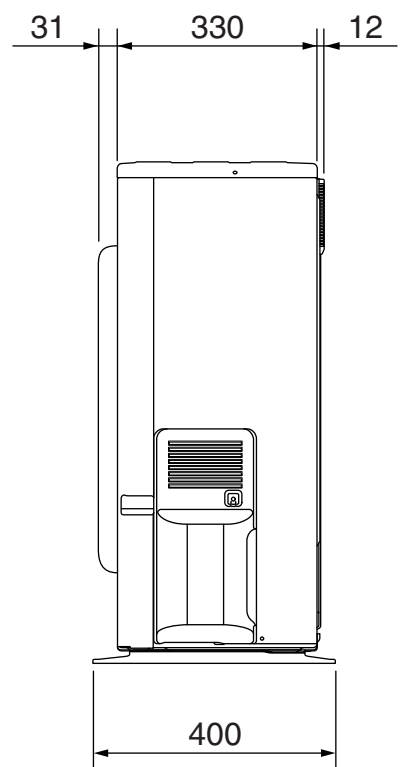
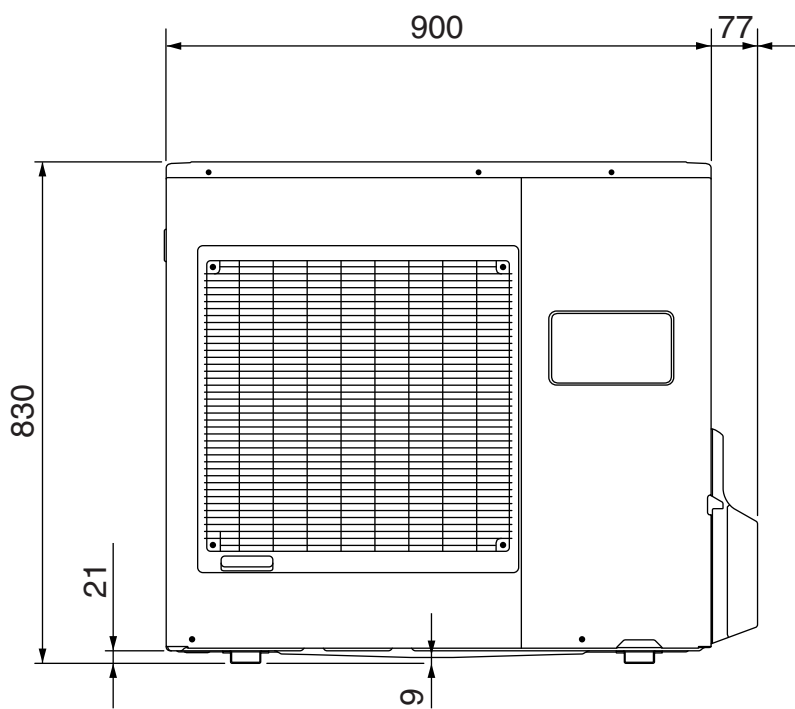
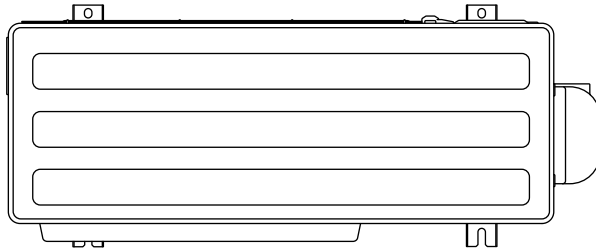
Models : AUH30LUAS
AUH36LUAS



OUTDOOR UNIT

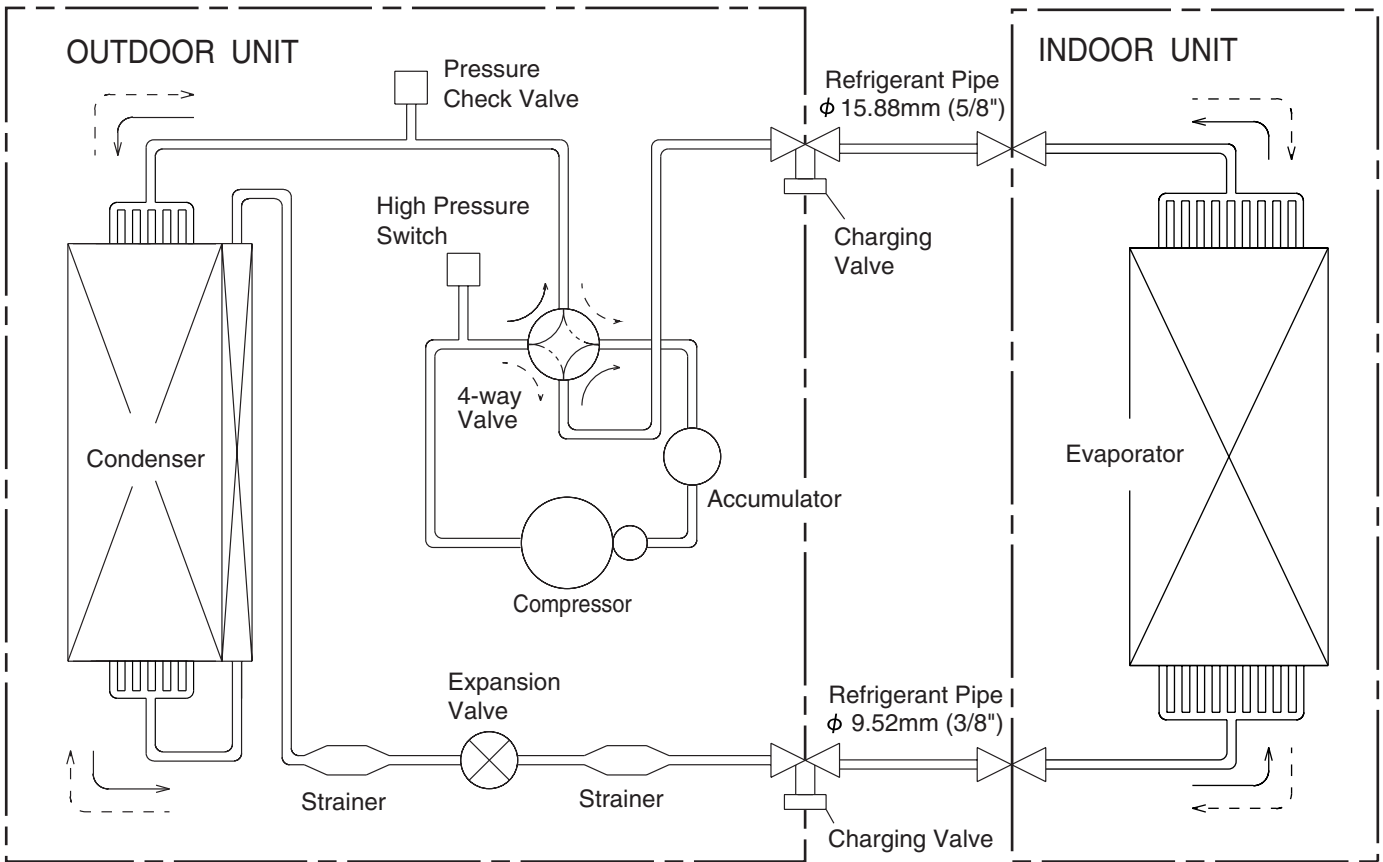
Models : AOH30LMBWL
AOH36LMBWL

(Unit : mm)



REFRIGERANT SYSTEM DIAGRAM

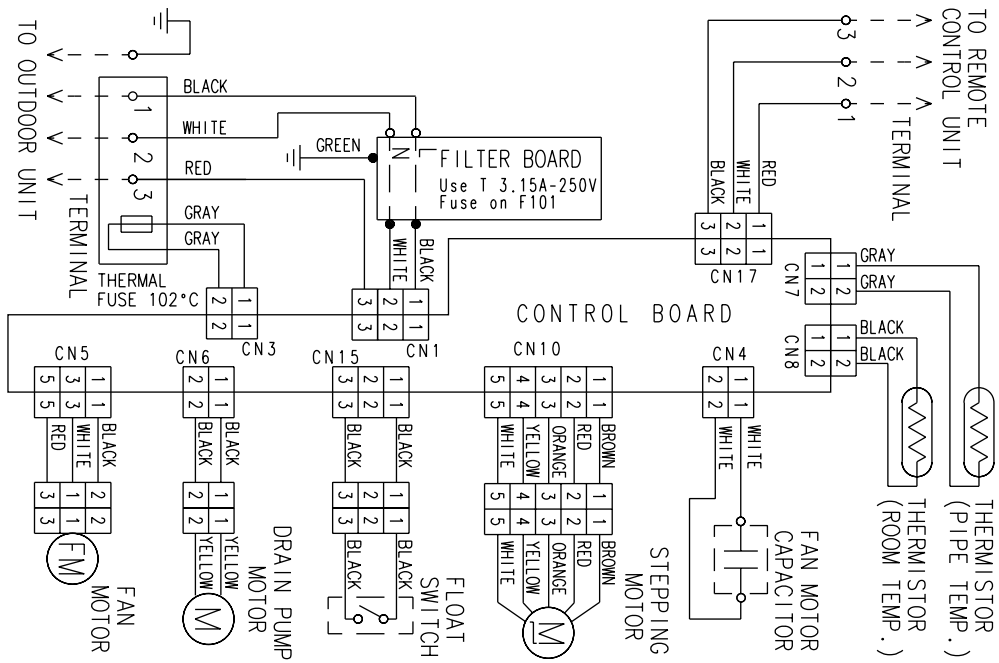
Models : AUH30LUAS / AOH30LMBWL
 AUH36LUAS / AOH36LMBWL



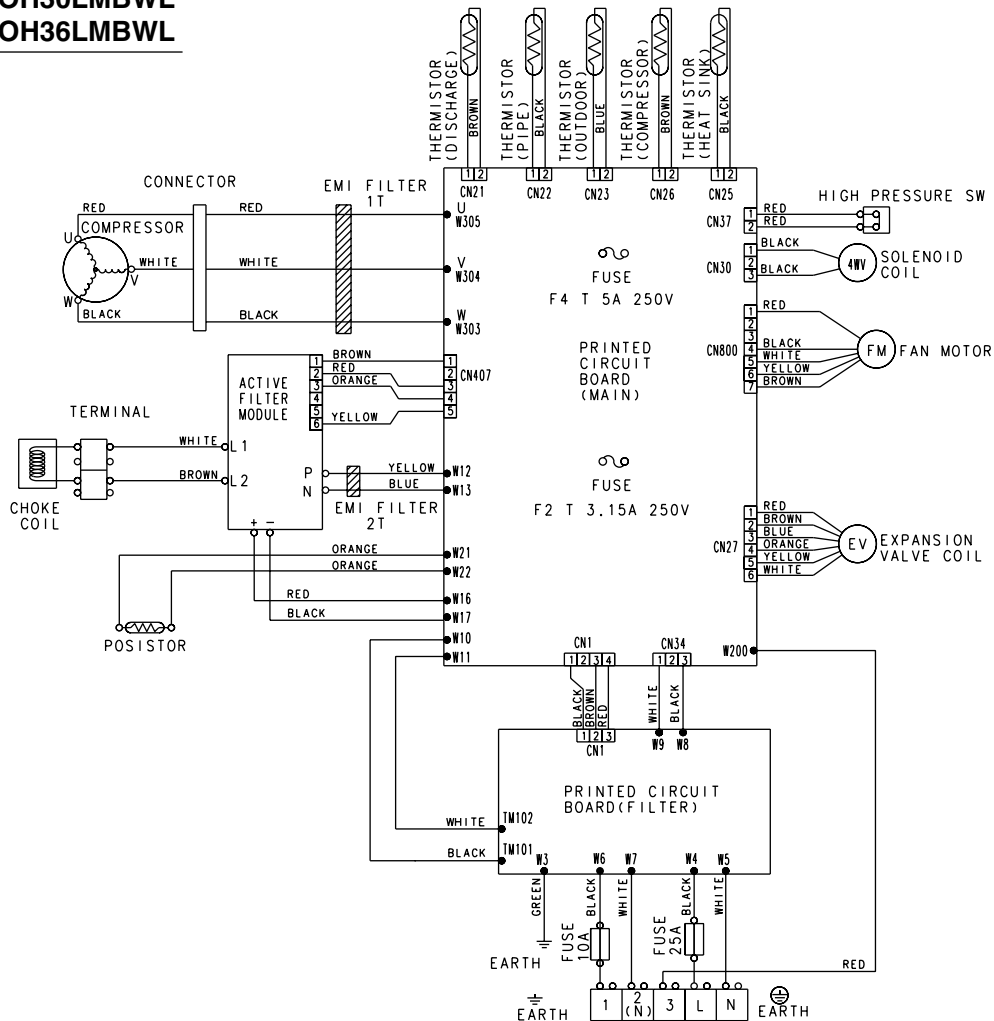
—→ : COOL
 - - -> : HEAT

CIRCUIT DIAGRAM

Models : AUH30LUAS
AUH36LUAS

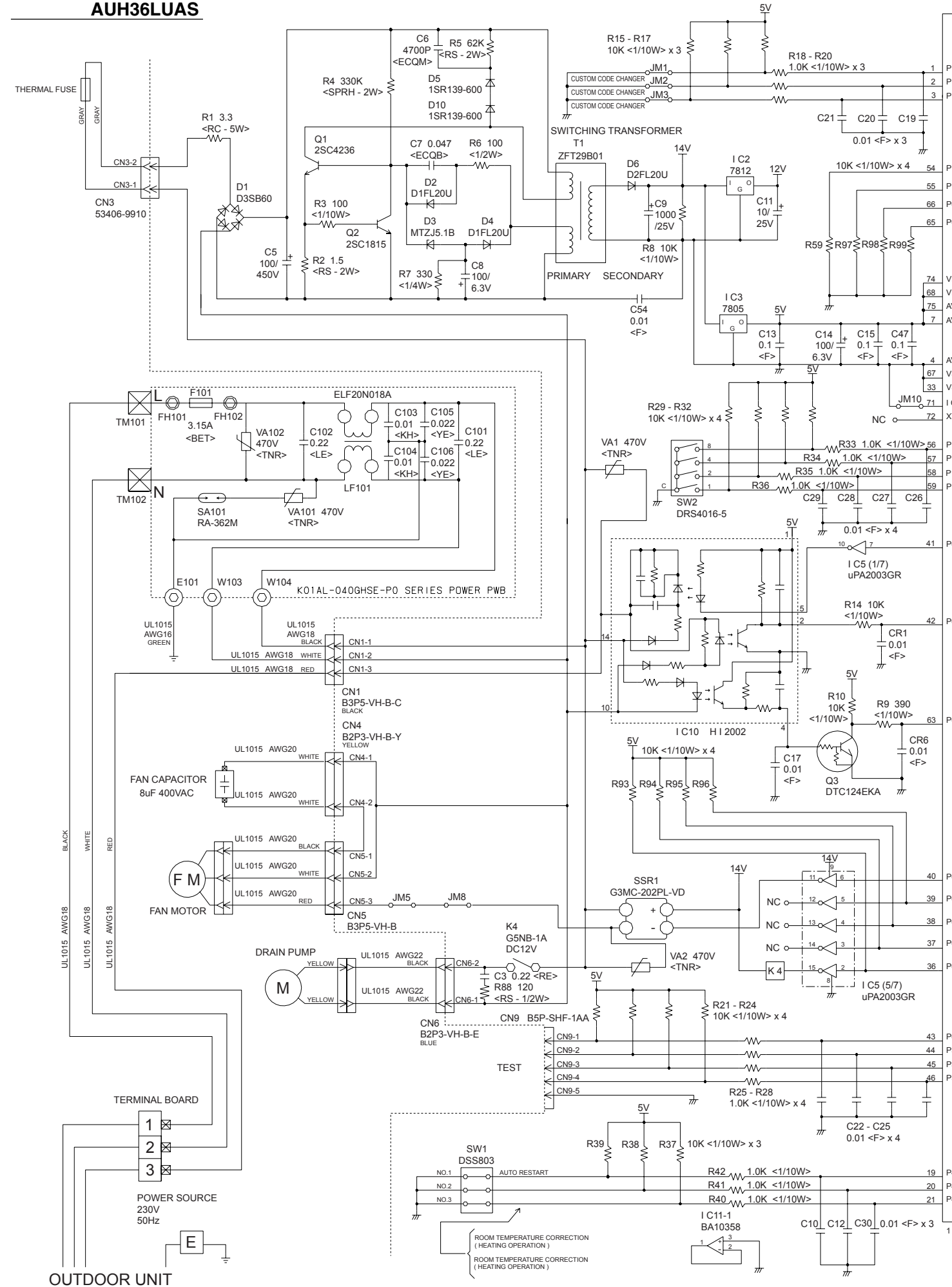


Models : AOH30LMBWL
AOH36LMBWL



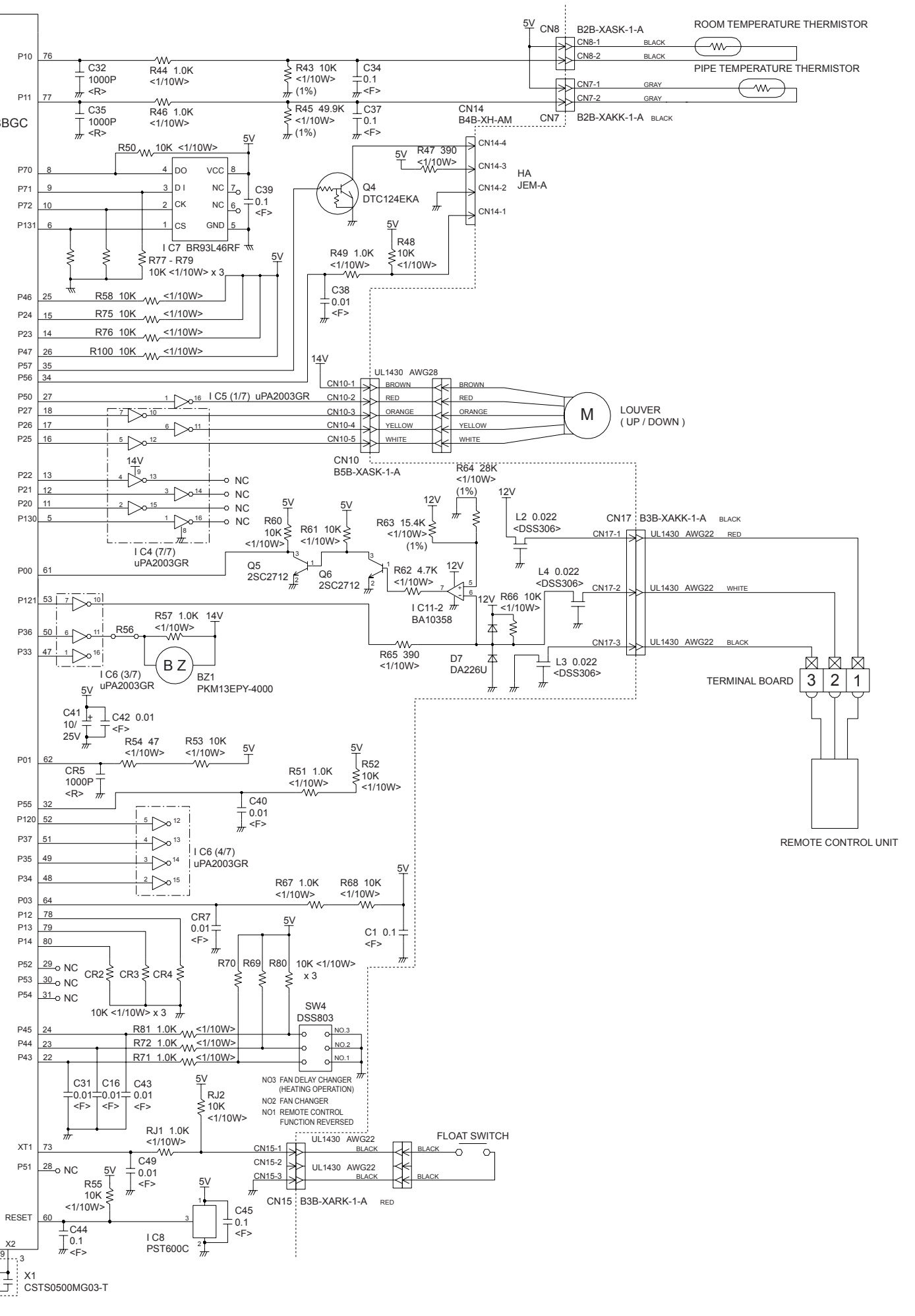
INDOOR PCB CIRCUIT DIAGRAM

Models : AUH30LUAS
AUH36LUAS



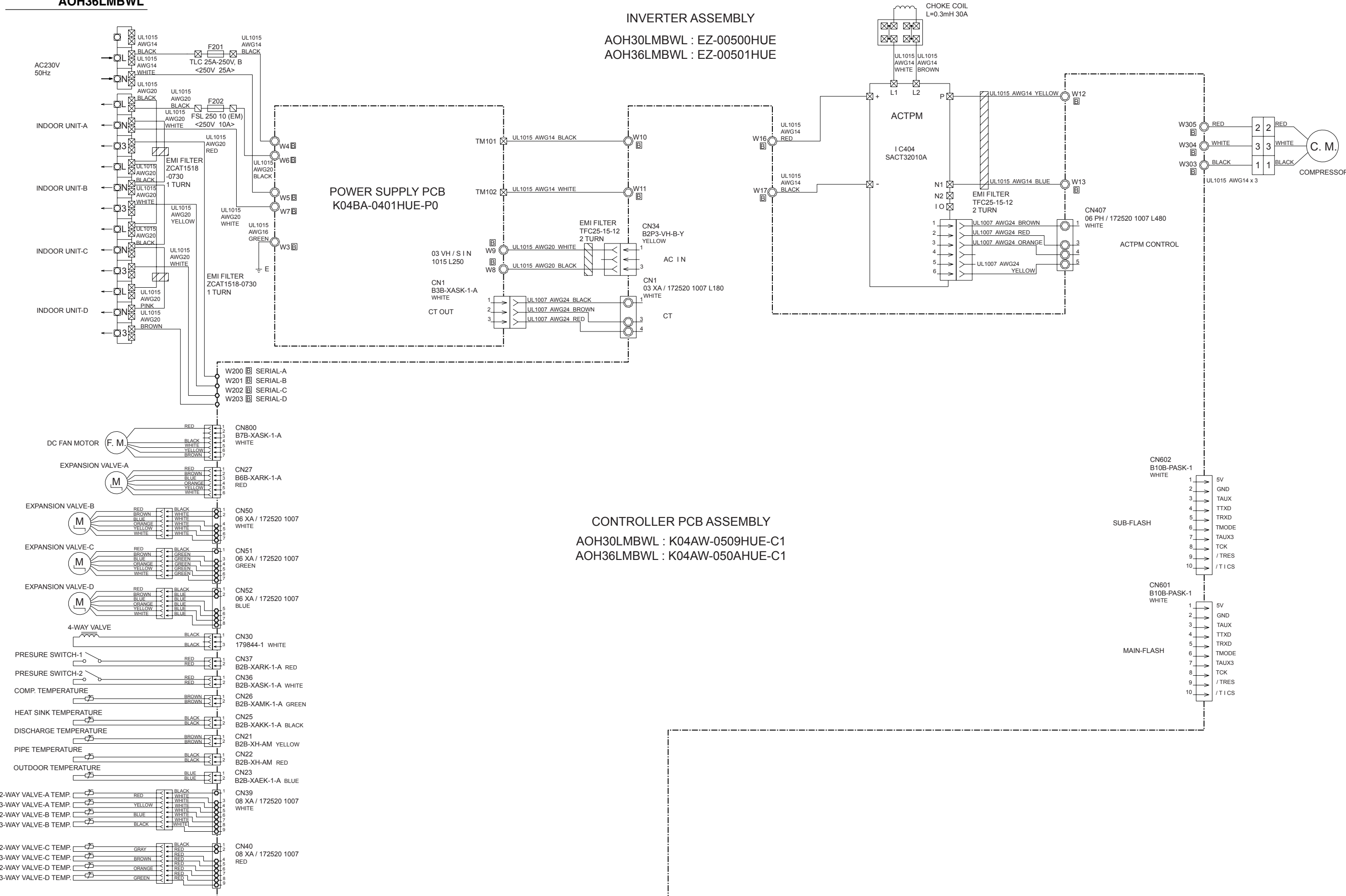
CONTROLLER PCB ASSEMBLY (MAIN PCB)

AUH30LUAS : K01AL-0500HSE-C1
AUH36LUAS : K01AL-0501HSE-C1



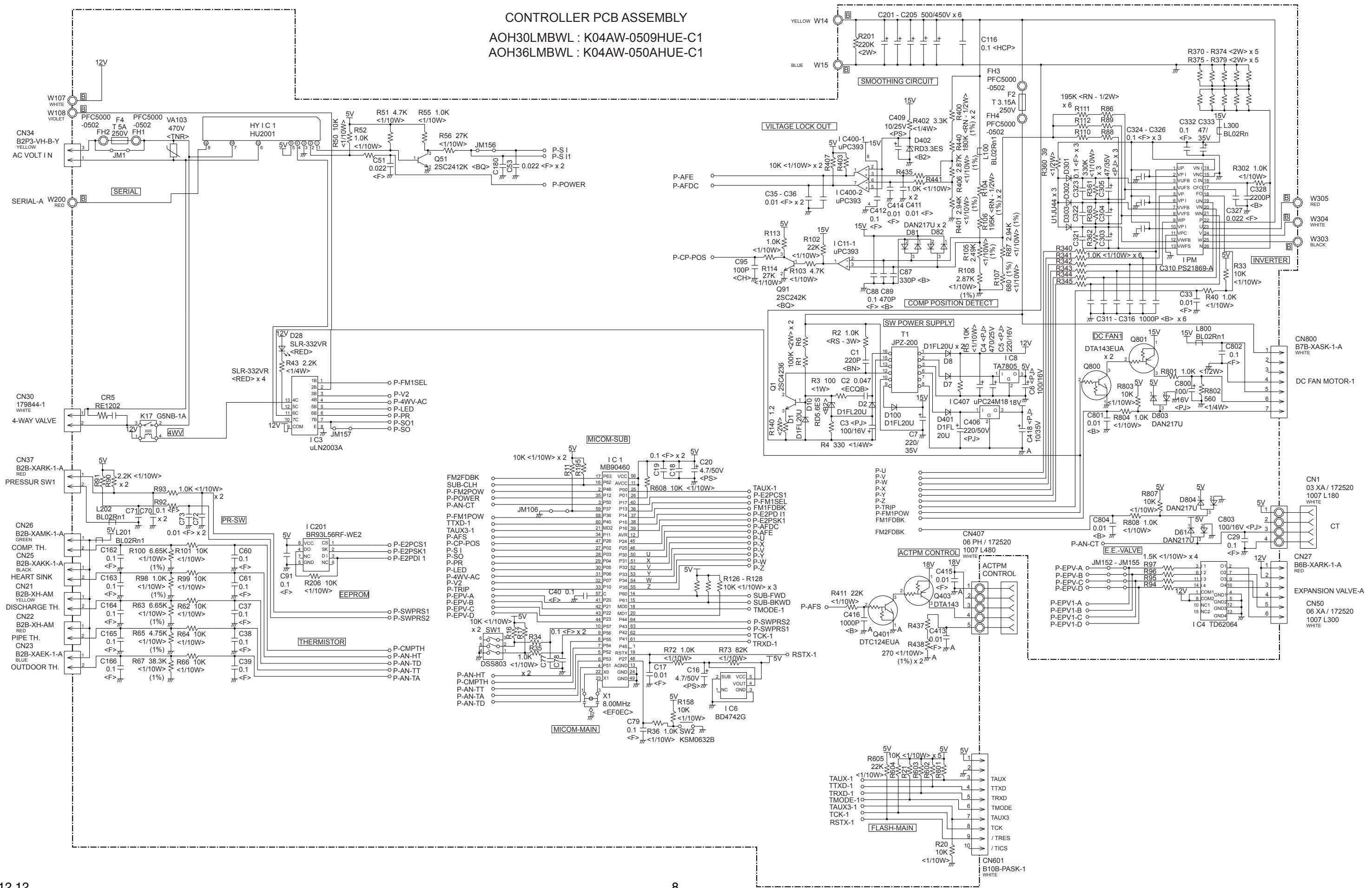
OUTDOOR PCB CIRCUIT DIAGRAM

Models : AOH30LMBWL
AOH36LMBWL



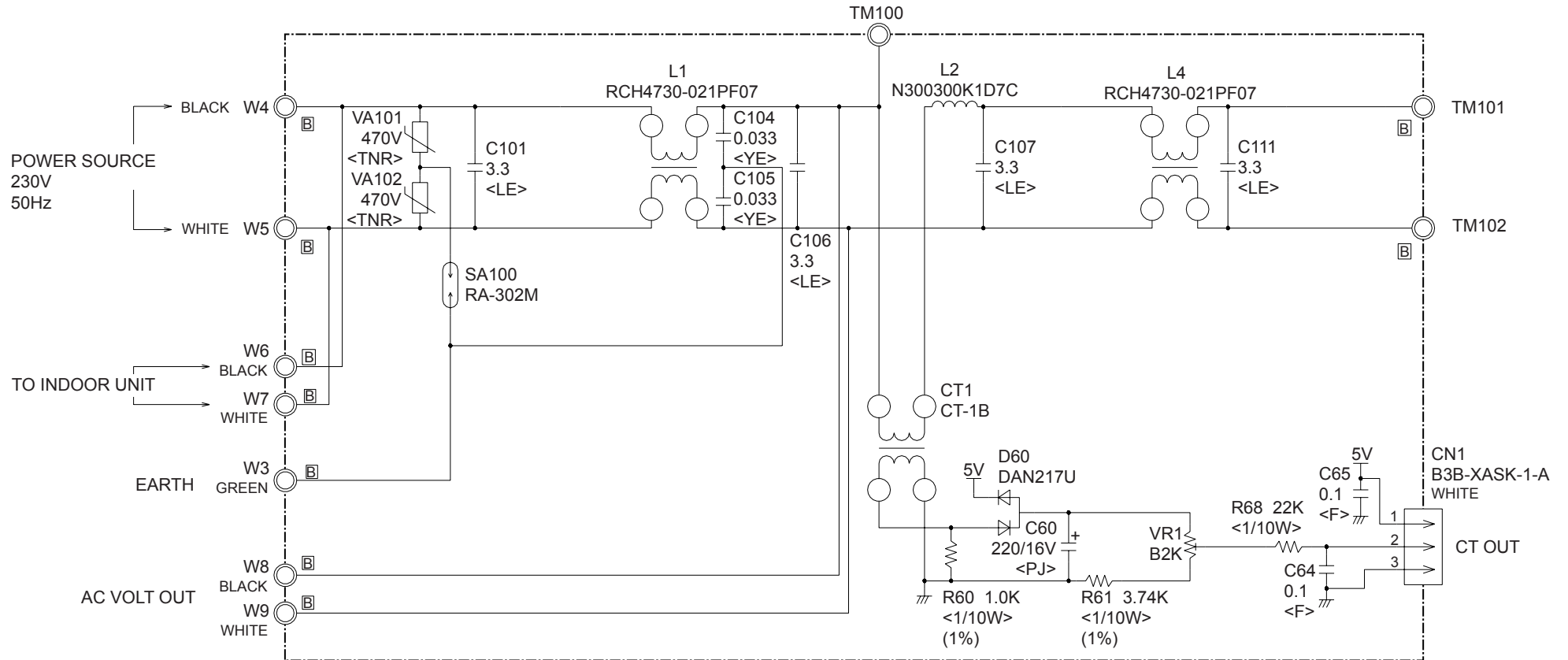
Models : AOH30LMAWL
AOH36LMAWL

CONTROLLER PCB ASSEMBLY
AOH30LMBWL : K04AW-0509HUE-C1
AOH36LMBWL : K04AW-050AHUE-C1



Models : AOH30LMBWL
AOH36LMBWL

POWER SUPPLY PCB ASSEMBLY
K04BA-0401HUE-P0

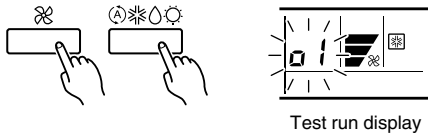


ERROR CONTENTS (indoor unit)

⚠ CAUTION

Supply power to the crankcase heater for at least 12 hours before the start of operation in winter.

- Stop the air conditioner operation.
- Press the master control button and the fan control button simultaneously for 2 seconds or more to start the test run.



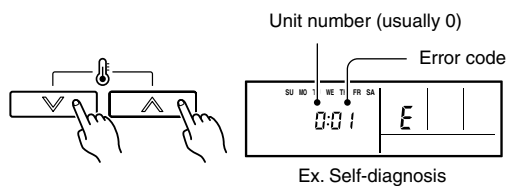
- Press the start/stop button to stop the test run.

[SELF-DIAGNOSIS]

When the error indication "E:EE" is displayed, follow the following items to perform the self-diagnosis. "E:EE" indicates an error has occurred.

1. REMOTE CONTROLLER DISPLAY

- Stop the air conditioner operation.
- Press the set temperature buttons \wedge / \vee simultaneously for 5 seconds or more to start the self-diagnosis. Refer to the following tables for the description of each error code.



- Press the set temperature buttons \wedge / \vee simultaneously for 5 seconds or more to stop the self-diagnosis.

| Error code | Error contents |
|------------|--|
| 01 | Indoor unit doesn't accept the signal from outdoor unit. |
| 02 | Room temperature sensor open |
| 03 | Room temperature sensor short-circuited |
| 04 | Indoor heat exchanger temperature sensor open |
| 05 | Indoor heat exchanger temperature sensor short-circuited |
| 06 | Outdoor heat exchanger temperature sensor |
| 08 | Power source connection error |
| 09 | Float switch operated |
| 0A | Outdoor temperature sensor |
| 0c | Discharge pipe temperature sensor |
| 11 | Model abnormal |
| 12 | Indoor fan abnormal |

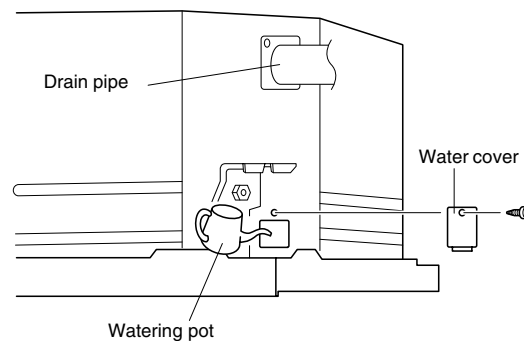
| Error code | Error contents |
|------------|--|
| 13 | Outdoor unit doesn't accept the signal from indoor unit. |
| 14 | Excessive outdoor pressure (permanent stop) |
| 15 | Compressor temperature sensor |
| 16 | Pressure switch error |
| 17 | IPM error |
| 18 | CT error |
| 19 | Active filter module (AFM) error |
| 1A | Compressor does not operate |
| 1b | Outdoor unit fan error |
| 1c | Communication error (inverter → multicontroller) |
| 1d | 2 way valve sensor error |
| 1E | Expansion valve error |
| 1F | Connection indoor unit error |

* 1c, 1d, 1E, 1F errors are only for multi type.

2. CHECKING DRAINAGE

To check the drain, remove the water cover and fill with 2 to 3 of water as shown in figure.

The drain pump operates when operating in the cooling mode.



ERROR CONTENTS (outdoor unit)

⚠ CAUTION

Always turn on the power 12 hours prior to the start of the operation in order to ensure compressor protection

1. Make a TEST RUN in accordance with the installation instruction sheet for the indoor unit.

2. OUTDOOR UNIT LEDS

When a malfunction occurs in the outdoor unit, the LED on the circuit board lights to indicate the error. Refer to the following table for the description of each error according to the LED.

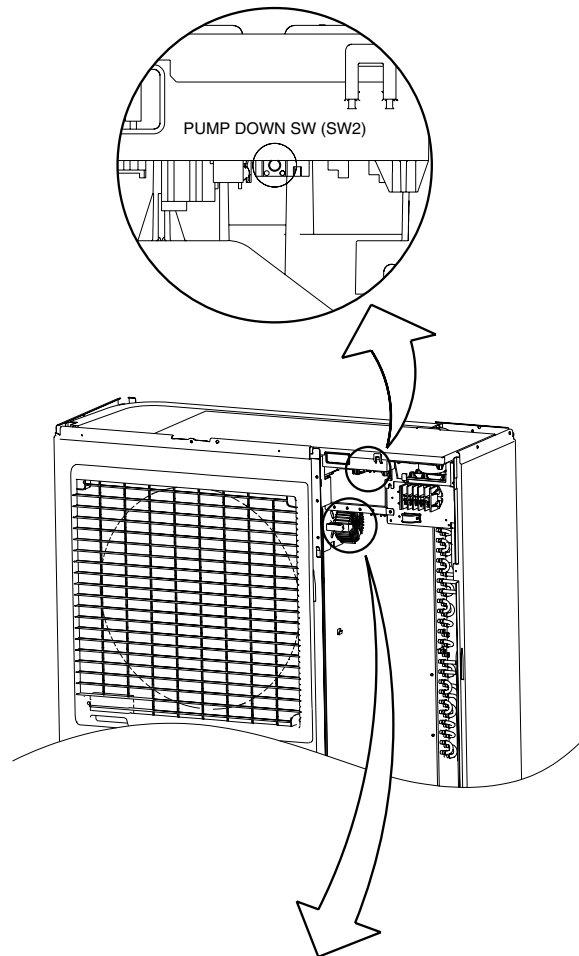
| LED | Error contents |
|--------------------------------------|---|
| 1 flash | Communication error (Indoor unit - Outdoor unit) |
| 2 flash | Discharg pipe temperature sensor |
| 3 flash | Outdoor heat exchanger temperature sensor |
| 4 flash | Outdoor temperature sensor |
| 7 flash | Compressor temperature sensor |
| 8 flash | Heat sink temperature sensor |
| 9 flash | Pressure switch abnormal |
| 12 flash | IPM error |
| 13 flash | Compressor rotor position cannot detect |
| 14 flash | Compressor cannot operate |
| 15 flash | Outdoor fan abnormal (upper fan) |
| 16 flash | Outdoor fan abnormal (lower fan) |
| 5 sec. ON/ 1 sec. OFF repeated | Protect operation |
| lighting | No error |

SPECIAL INSTALLATION SETTING

PUMP DOWN (Refrigerant collecting operation)

Perform the following procedures to collect the refrigerant when moving the indoor unit or the outdoor unit.

- (1) Press the push-button switch (SW2) on the circuit board once.
The LED on the circuit board starts flashing (one second ON/one second OFF). This indicates the start of PUMP DOWN operation. When the switch is pressed while the compressor is in operation, PUMP DOWN operation starts automatically. When the switch is pressed while the compressor is in stop, the compressor starts to operate automatically, and then move on to PUMP DOWN operation.
- (2) PUMP DOWN operation continues for about 1 minute. When PUMP DOWN operation is completed, the compressor stops automatically. Then close the 2-way valve and 3-way valve immediately.
- (3) Turn the power off.

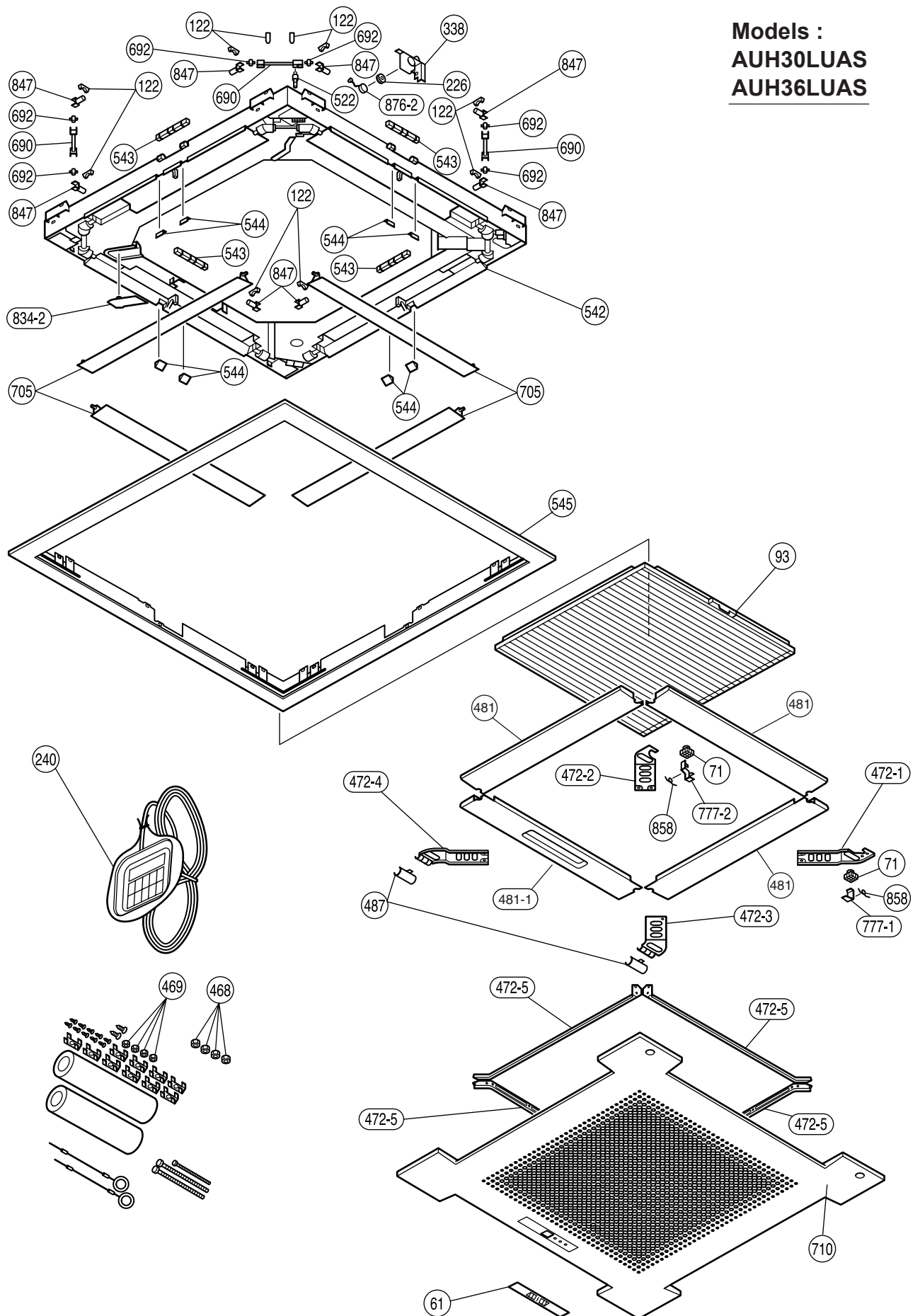


⚠ DANGER

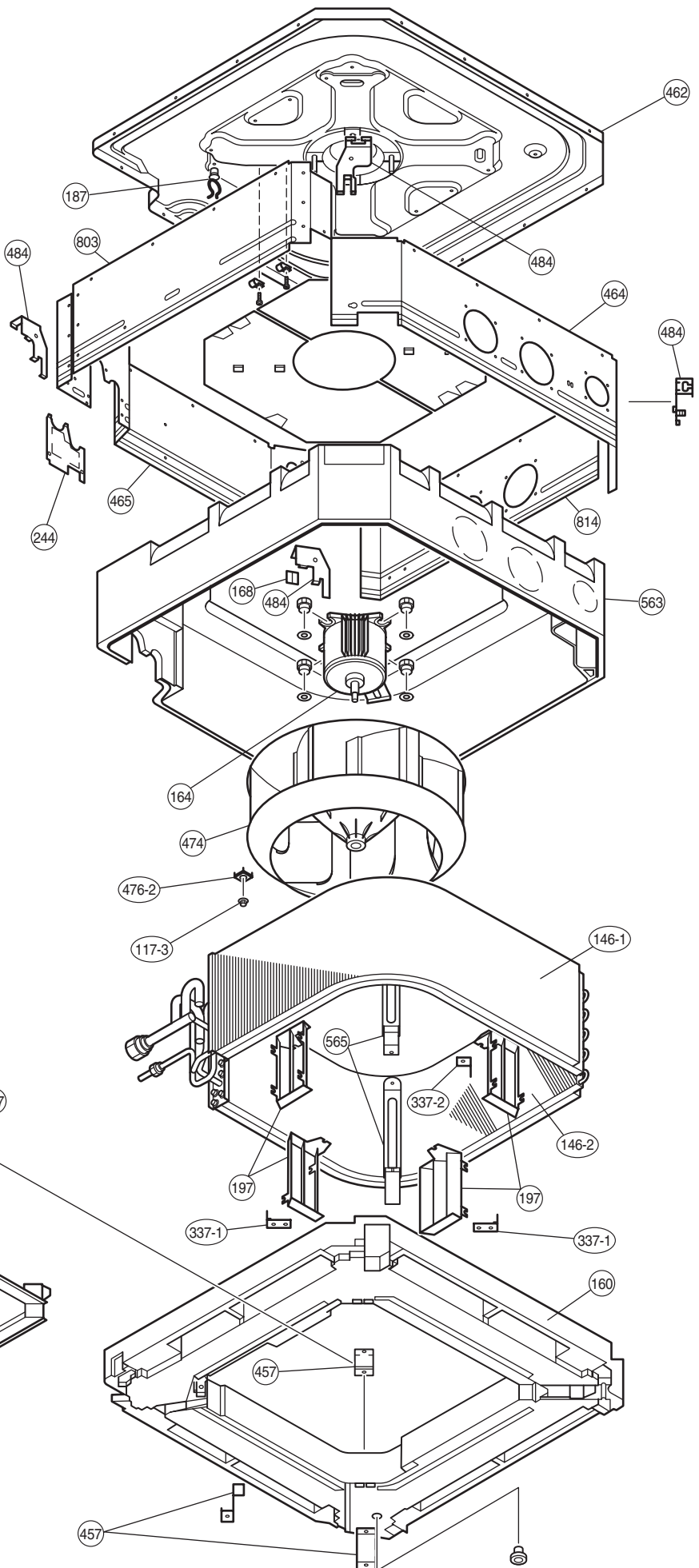
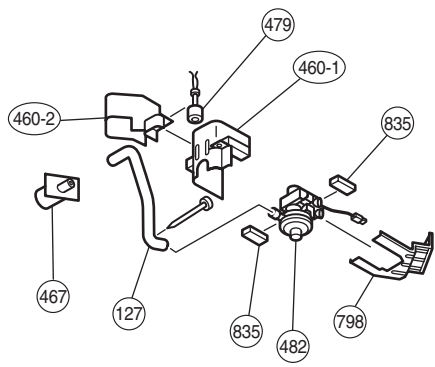
This part (Choke coil) generates high voltages. Never touch this part.

DISASSEMBLY ILLUSTRATION

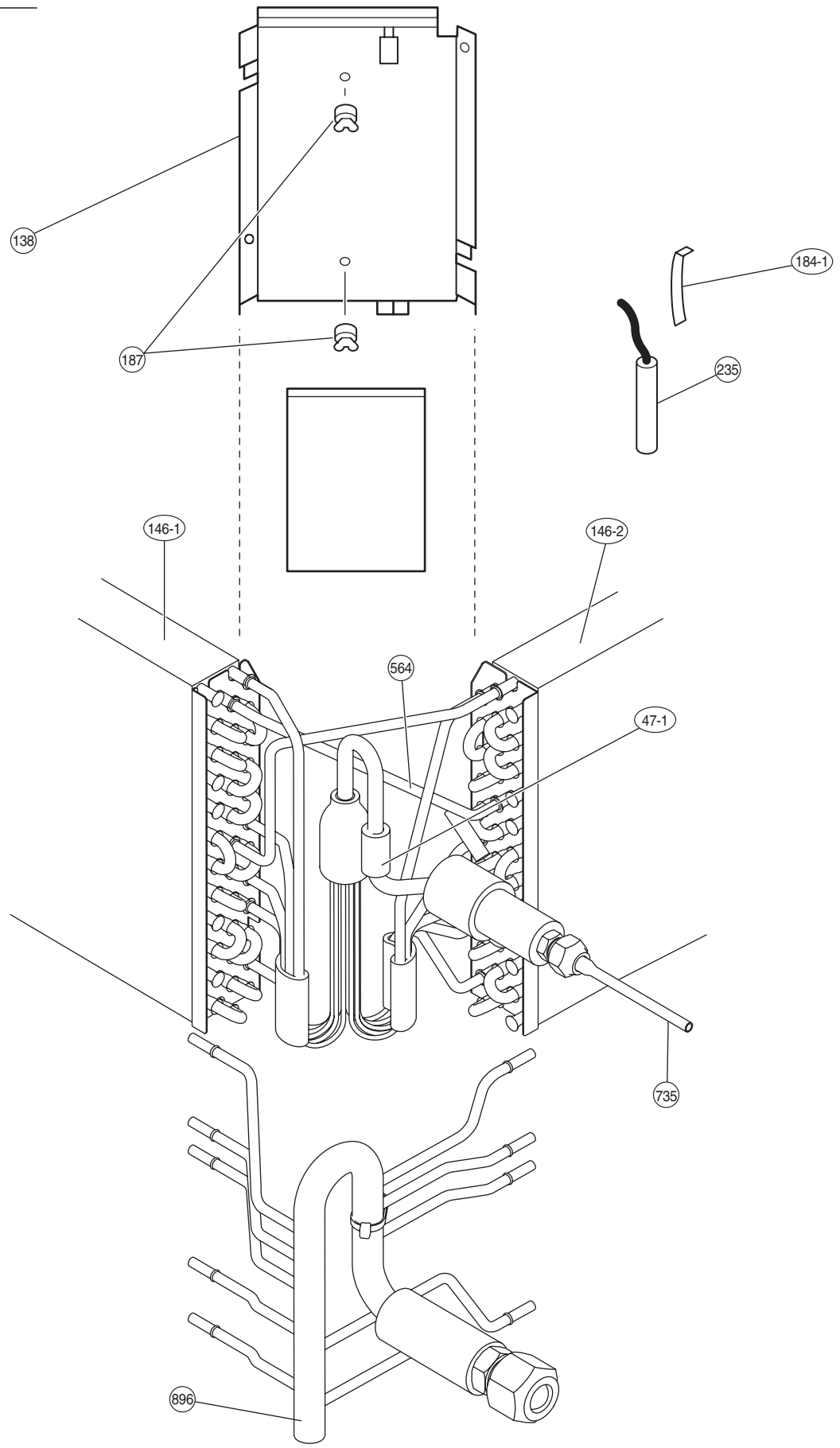
Models :
AUH30LUAS
AUH36LUAS



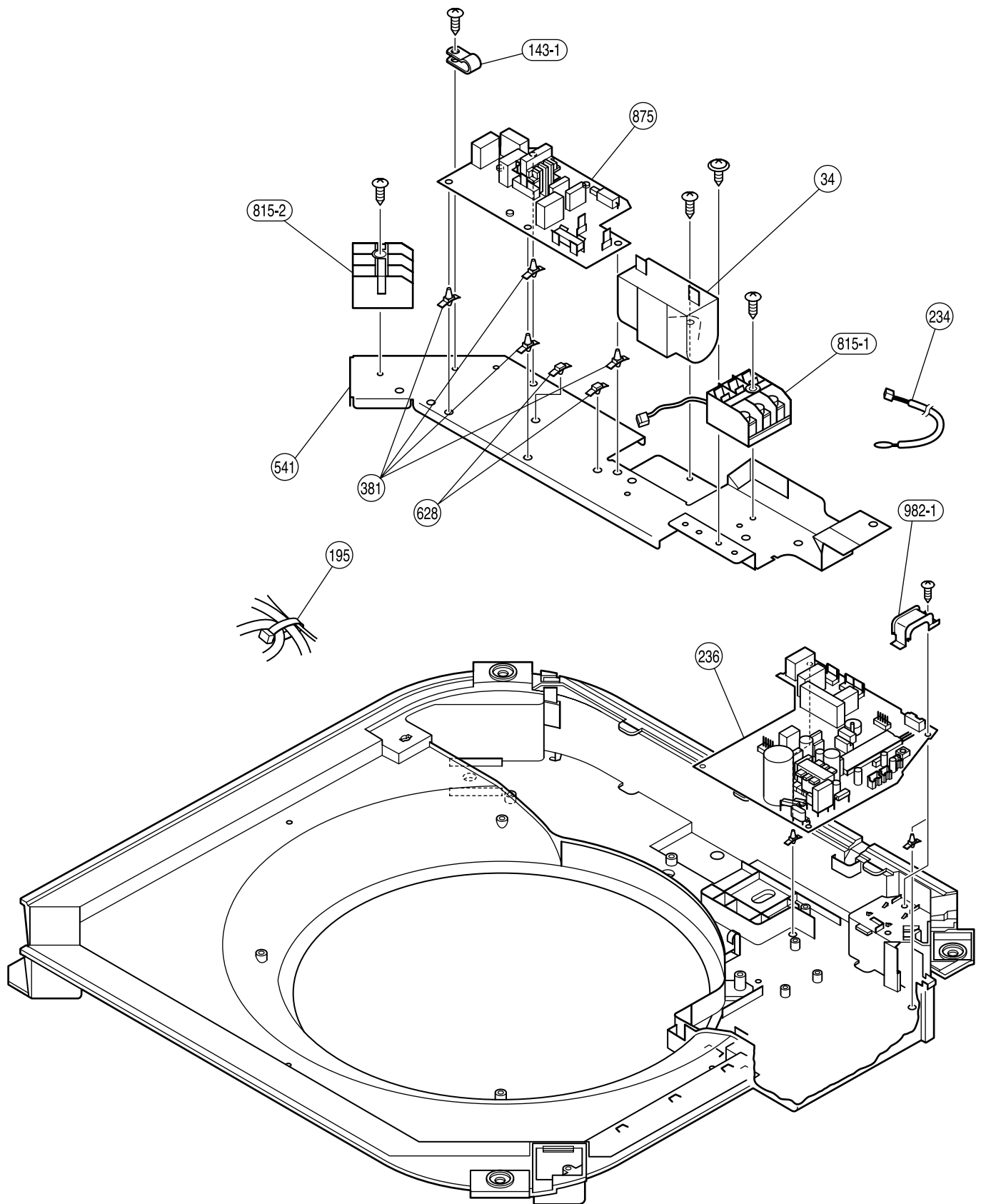
Models :
AUH30LUAS
AUH36LUAS



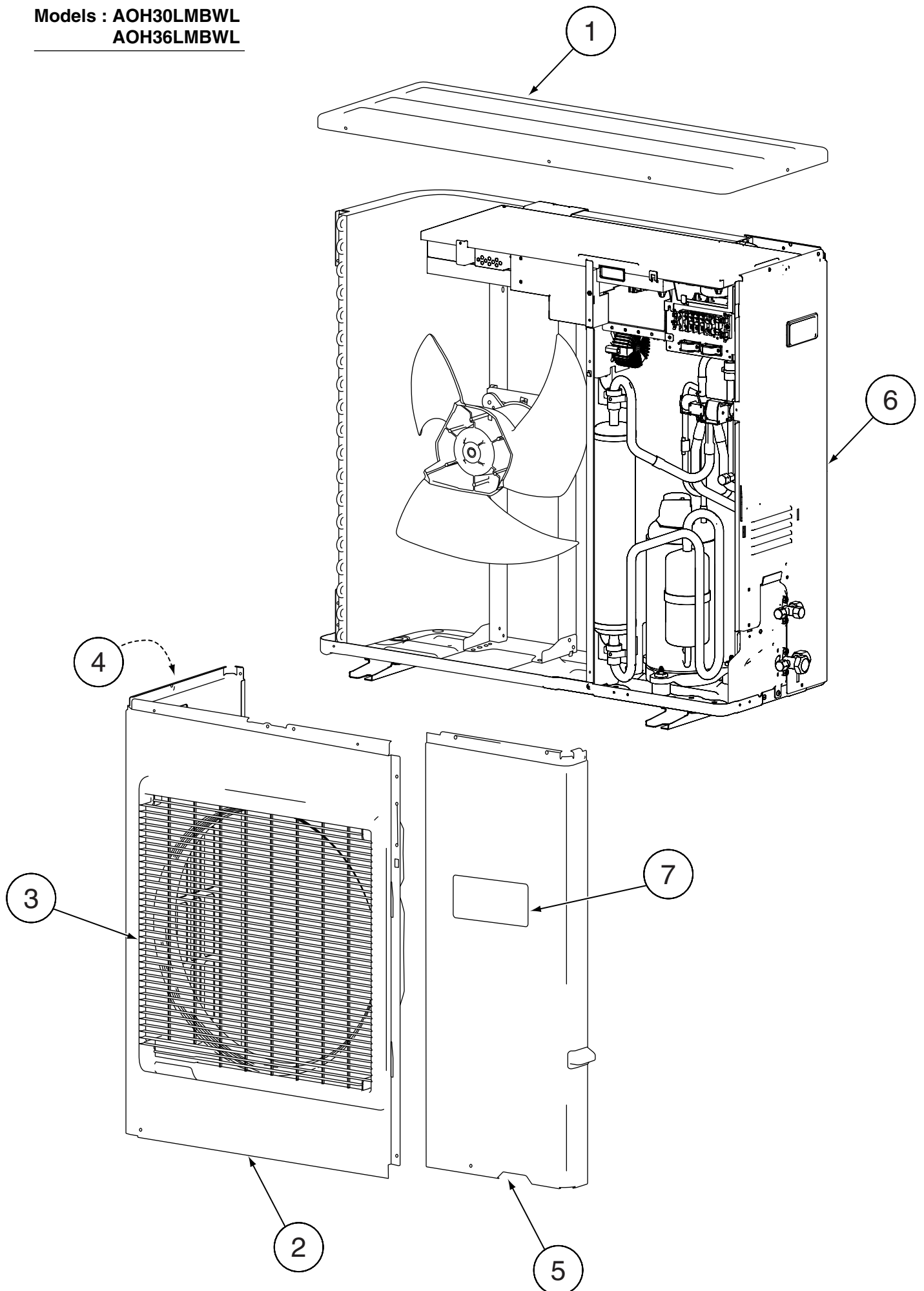
Models :
AUH30LUAS
AUH36LUAS



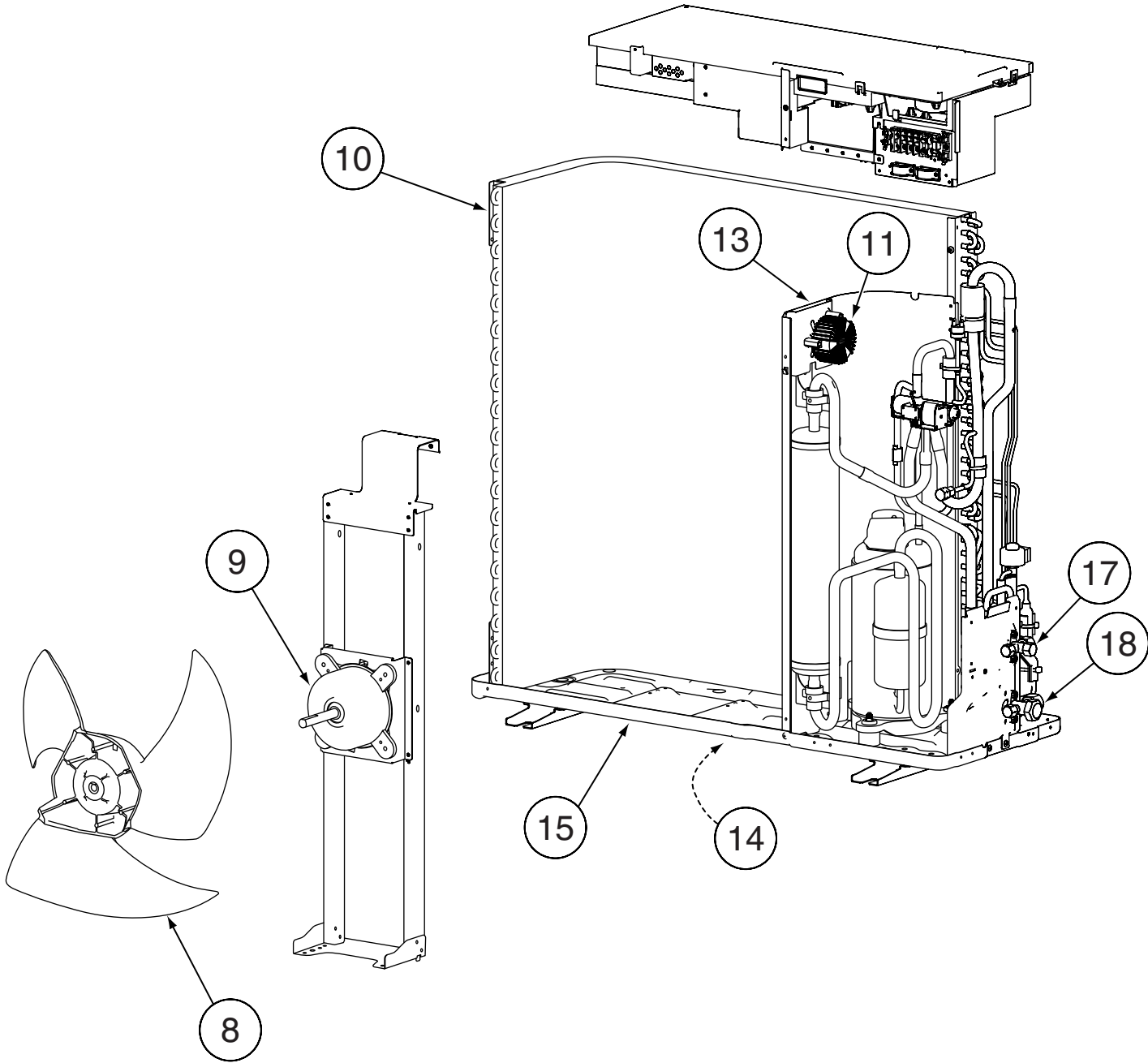
Models :
AUH30LUAS
AUH36LUAS



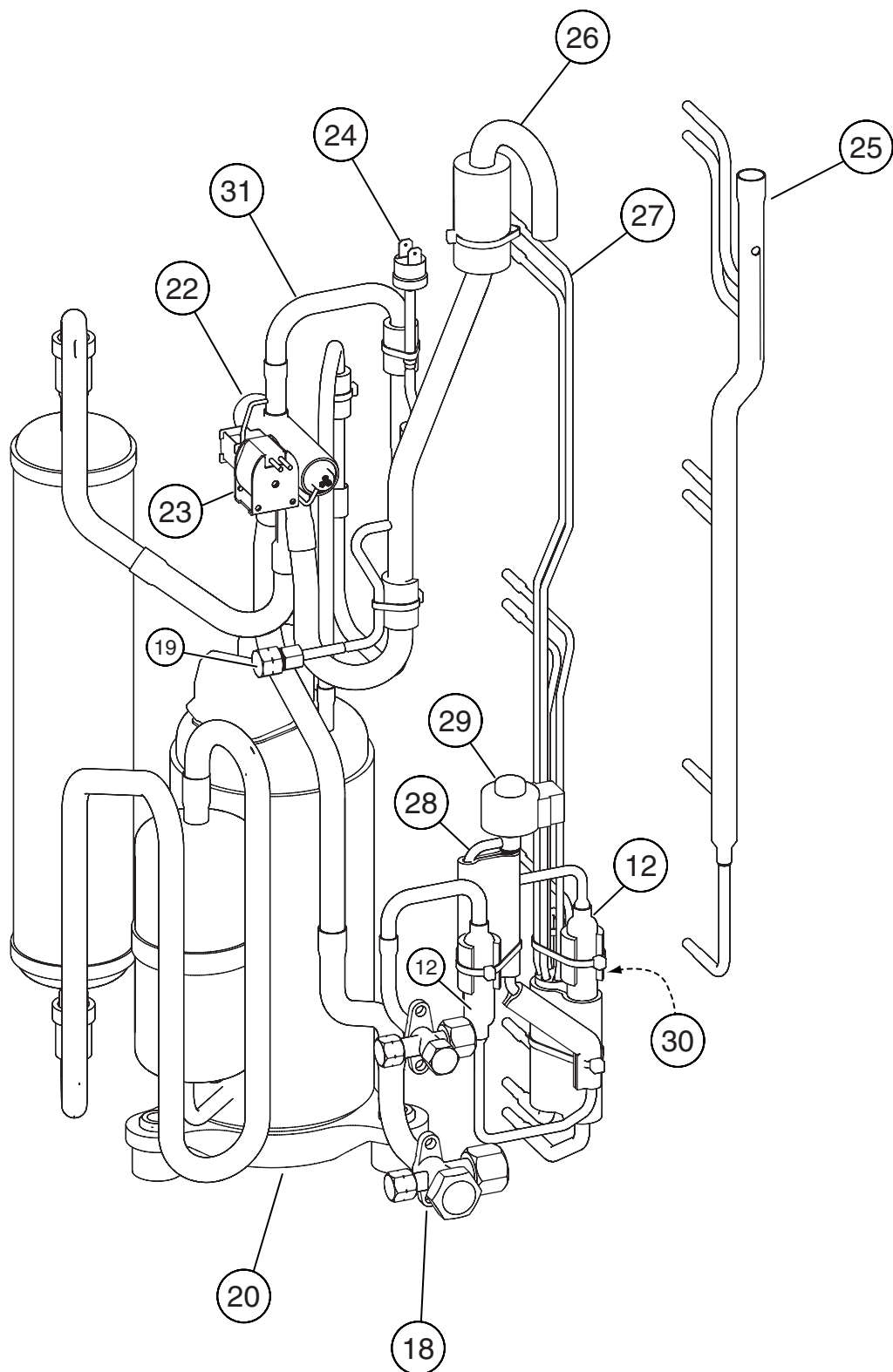
Models : AOH30LMBWL
AOH36LMBWL



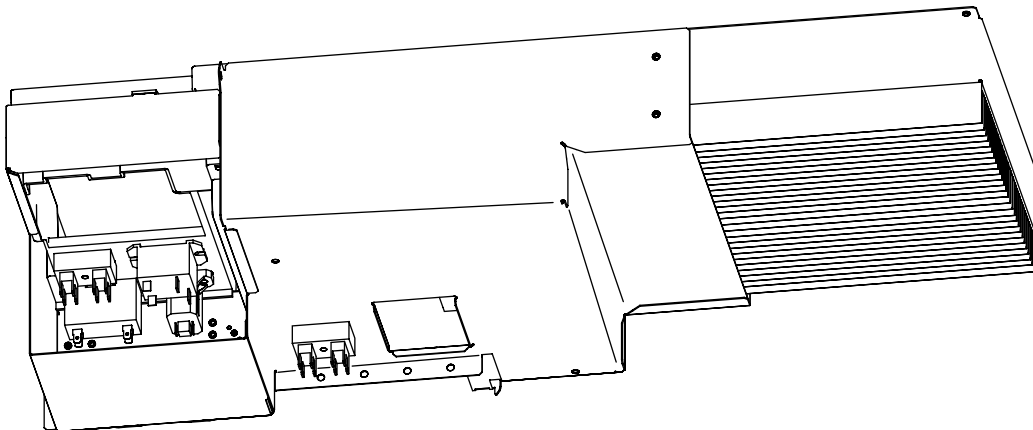
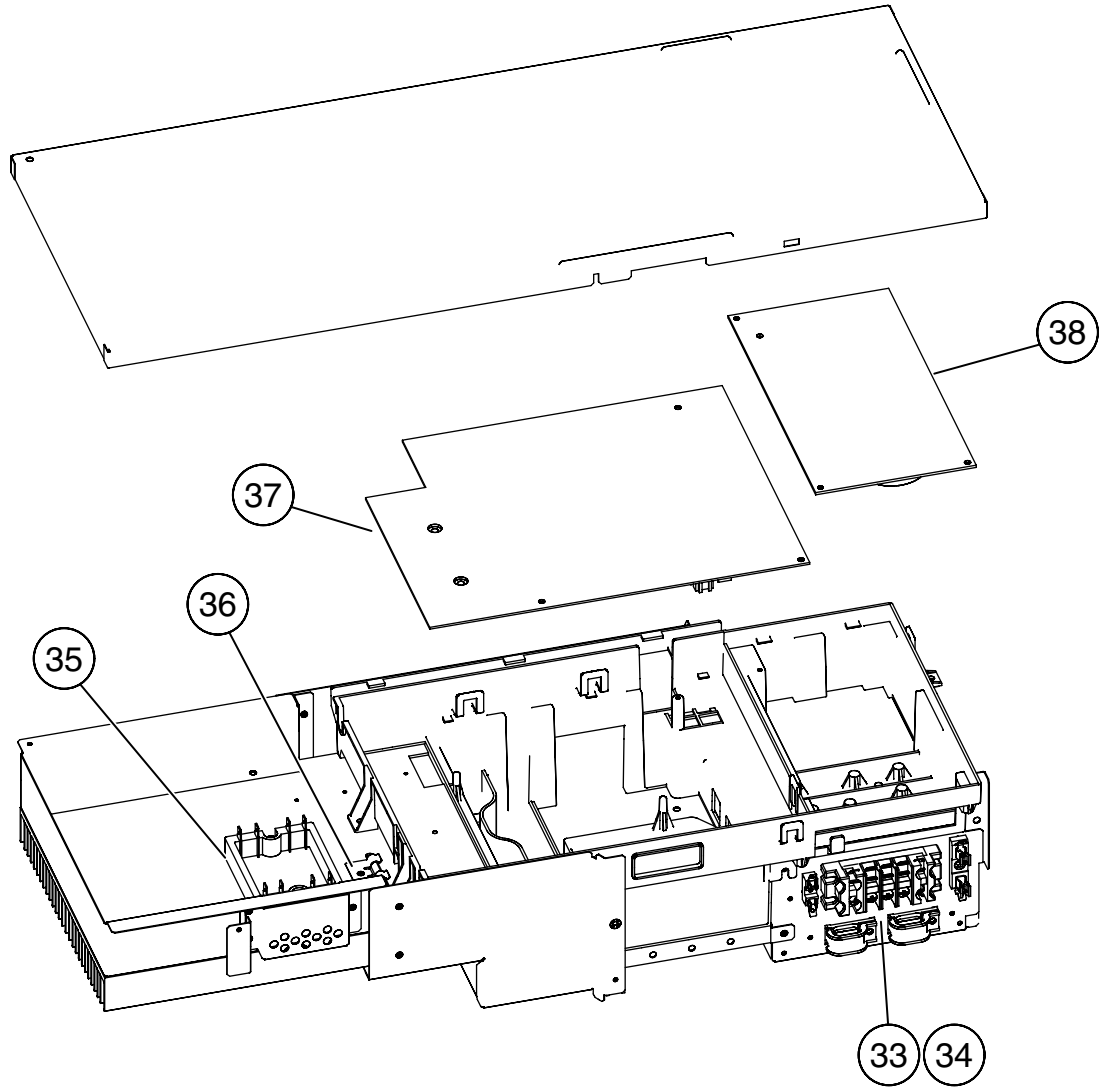
Models : AOH30LMBWL
AOH36LMBWL



Models : AOH30LMBWL
AOH36LMBWL



Models : AOH30LMBWL
AOH36LMBWL



PARTS LIST

INDOOR UNIT

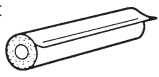



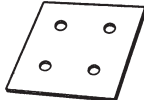
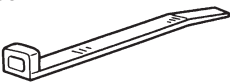



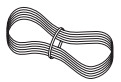
| Ref. No. | Description | Part No. | | Ord. Q'ty | Ref. No. | Description | Part No. | | Ord. Q'ty |
|----------|---------------------------|--------------|--------------|-----------|----------|------------------------|--------------|--------------|-----------|
| | | AUH30LUAS | AUH36LUAS | | | | AUH30LUAS | AUH36LUAS | |
| 34 | Capacitor (Fan Motor) | 9900270162 | 9900270162 | | 472-5 | RFM (Grille)-E | 9362742009 | 9362742009 | |
| 47-1 | Rubber (Discharge Pipe) | 313194159807 | 313194159807 | | 474 | Turbo Fan Assy | 9362803014 | 9362803014 | |
| 61 | Decoration Plate | 9363131000 | 9363131000 | | 476-2 | Washer (Turbo Fan) | 9362756006 | 9362756006 | |
| 71 | Holder (Hook) | 9362782005 | 9362782005 | | 477 | Bellmouth-B | 9362774000 | 9362774000 | |
| 93 | Filter | 9362766005 | 9362766005 | | 479 | Float Switch | 9703285004 | 9703285004 | |
| 117-3 | Hexagon Nut | 301721180114 | 301721180114 | | 481 | Insulation (Grille)-A | 9362780001 | 9362780001 | |
| 122 | Holder (Louver Supporter) | 9362799003 | 9362799003 | | 481-1 | Insulation (Grille)-B | 9362781008 | 9362781008 | |
| 127 | Drain Hose | 9362784009 | 9362784009 | | 482 | Pump Unit | 9703125010 | 9703125010 | |
| 138 | Separate wall | 9362737005 | 9362737005 | | 484 | Hook | 9362736008 | 9362736008 | |
| 143-1 | Clamp NK-3 | 313361274700 | 313361274700 | | 487 | Hinge Wire (Grille) | 9362754002 | 9362754002 | |
| 146-1 | Evaporator-A Assy | 9373799054 | 9373799054 | | 488 | Drain Pan Plug | 313005174654 | 313005174654 | |
| 146-2 | Evaporator-B Assy | 9373800057 | 9373800057 | | 514 | Control Box Cover | 9362763004 | 9362763004 | |
| 160 | Kit (Drain Pan Sub Assy) | 9370934014 | 9370934014 | | 522 | Joint Gear | 9362772006 | 9362772006 | |
| 164 | Motor, Induction | 9601915010 | 9601915010 | | 541 | Terminal Plate | 9363642001 | 9363642001 | |
| 168 | Cabinet-E | 9362735001 | 9362735001 | | 542 | Panel Base | 9362759014 | 9362759014 | |
| 184-1 | Thermistor Spring-A | 313728262708 | 313728262708 | | 543 | Holder (Panel Frame) | 9362761017 | 9362761017 | |
| 187 | Clamp No. 1219 | 313361271706 | 313361271706 | | 544 | Holder (Panel Base) | 9362760010 | 9362760010 | |
| 195 | Binder-C | 313361275805 | 313361275805 | | 545 | Panel Frame | 9362758017 | 9362758017 | |
| 197 | Wind Guide Board | 9373444015 | 9373444015 | | 563 | Inner Box | 9362768009 | 9362768009 | |
| 223 | Control Box | 9362762007 | 9362762007 | | 564 | Bypass Pipe-A Assy | 9371323053 | 9371323053 | |
| 226 | Motor Gear | 9362764001 | 9362764001 | | 565 | Evaporator Holder Assy | 9362802017 | 9362802017 | |
| 234 | Room Temp. Thermistor | 9703299025 | 9703299025 | | 628 | Locking Spacer-B | 313005446558 | 313005446558 | |
| 235 | Pipe Temp. Thermistor | 9703297014 | 9703297014 | | 690 | Joint-A | 9362773003 | 9362773003 | |
| 236 | Controller PCB Assy | 9705914049 | 9705914056 | | 692 | Joint Shaft | 9362771009 | 9362771009 | |
| 240 | Remote Control Unit | 9372266052 | 9372266052 | | 705 | Louver Assy | 9362836012 | 9362836012 | |
| 244 | Pipe Cover Assy | 9362819015 | 9362819015 | | 710 | Intake Grille | 9362767019 | 9362767019 | |
| 337-1 | RFM (Eva.)-A | 9362749008 | 9362749008 | | 735 | Distributor Assy | 9371325132 | 9371325132 | |
| 337-2 | RFM (Eva.)-B | 9362750004 | 9362750004 | | 777-1 | Hook (Grille)-A | 9362779012 | 9362779012 | |
| 338 | Motor Holder | 9362765008 | 9362765008 | | 777-2 | Hook (Grille)-B | 9362778015 | 9362778015 | |
| 381 | Locking Spacer | 313209391506 | 313209391506 | | 798 | Drain Pump Holder | 9362753005 | 9362753005 | |
| 457 | RFM (Drain Pan) | 9362757003 | 9362757003 | | 803 | Cabinet-D | 9362734004 | 9362734004 | |
| 460-1 | Pump Cover-A | 9362775007 | 9362775007 | | 814 | Cabinet-C | 9362733007 | 9362733007 | |
| 460-2 | Pump Cover-B | 9362776004 | 9362776004 | | 815-1 | Terminal-3P | 9306489069 | 9306489069 | |
| 462 | Panel (Top) Assy | 9362806015 | 9362806015 | | 815-2 | Terminal-3P | 9703345012 | 9703345012 | |
| 464 | Cabinet-A Assy | 9362800013 | 9362800013 | | 834-1 | Cover (Wire)-A | 9362789004 | 9362789004 | |
| 465 | Cabinet-B Assy | 9362801010 | 9362801010 | | 834-2 | Cover (Wire)-B | 9362788007 | 9362788007 | |
| 467 | Drain Port | 9362786003 | 9362786003 | | 835 | Cushion (Pump) | 9362777001 | 9362777001 | |
| 468 | M10 Nut-A (Large) | 313005446653 | 313005446653 | | 847 | Louver Supporter | 9362770019 | 9362770019 | |
| 469 | M10 Nut-B (Small) | 313005446759 | 313005446759 | | 858 | Spring (Grille) | 9362755009 | 9362755009 | |
| 472-1 | RFM (Grille)-A | 9362738002 | 9362738002 | | 875 | Power Supply PCB Assy | 9704561220 | 9704561220 | |
| 472-2 | RFM (Grille)-B | 9362739009 | 9362739009 | | 876-2 | Motor, Step | 9900362027 | 9900362027 | |
| 472-3 | RFM (Grille)-C | 9362740005 | 9362740005 | | 896 | Coupling Pipe Assy | 9373038221 | 9373038221 | |
| 472-4 | RFM (Grille)-D | 9362741002 | 9362741002 | | 982-1 | Clamp (Cord) | 9356857009 | 9356857009 | |

OUTDOOR UNIT

| Ref. No. | Description | Part No. | | Ord. Q'ty |
|----------|----------------------------|--------------|--------------|-----------|
| | | AOH30LMBWL | AOH36LMBWL | |
| 1 | Top Panel Sub Assy | 9374417025 | 9374417025 | |
| 2 | Front Panel | 9374094066 | 9374094066 | |
| 3 | Fan Guard | 9374330010 | 9374330010 | |
| 4 | Grip Side | 9374173013 | 9374173013 | |
| 5 | Service Panel Sub Assy | 9374415038 | 9374415038 | |
| 6 | Right Panel Sub Assy | 9374416066 | 9374416066 | |
| 7 | Emblem Rear | 9372171011 | 9372171011 | |
| 8 | Propeller Fan Assy | 9366378020 | 9366378020 | |
| 9 | Motor, Induction | 9601882015 | 9601882015 | |
| 10 | Condenser-A Assy | 9374433056 | 9374433056 | |
| 11 | Coil Choke | 9703458019 | 9703458019 | |
| 12 | Strainer Assy | 9372524015 | 9372524015 | |
| 13 | Separate Wall Assy | 9374629022 | 9374629022 | |
| 14 | Cap Foot | 9374345014 | 9374345014 | |
| 15 | Base Assy | 9374166084 | 9374166084 | |
| 17 | 3-Way Valve Assy (3/8) | 9372205044 | 9372205044 | |
| 18 | 3-Way Valve Assy (5/8) | 9372205075 | 9372205075 | |
| 19 | Check Joint Assy | 9372802038 | 9372802038 | |
| 20 | Compressor Assy | 9373711018 | 9373711018 | |
| 22 | 4-Way Valve | 9900164010 | 9900164010 | |
| 23 | Solenoid | 9900165055 | 9900165055 | |
| 24 | Pressure Switch | 9900186012 | 9900186012 | |
| 25 | Inlet Pipe Cond A Assy | 9373461067 | 9373461067 | |
| 26 | Inlet Pipe Cond B Assy | 9373463054 | 9373463054 | |
| 27 | Outlet Pipe Cond A Assy | 9374266050 | 9374266050 | |
| 28 | Expansion Valve Assy | 9370947113 | 9370947113 | |
| 29 | Coil (Expansion Valve) | 9900057039 | 9900057039 | |
| 30 | Distributor | 9369128004 | 9369128004 | |
| 31 | Discharge Pipe A Assy | 9372264126 | 9372264126 | |
| 33 | Terminal 2P | 9701971015 | 9701971015 | |
| 34 | Terminal 5P | 9900203023 | 9900203023 | |
| 35 | ACTPM | 9703457012 | 9703457012 | |
| 36 | Holder Thermo | 9372797013 | 9372797013 | |
| 37 | Inverter PCB Assy | 9705642157 | 9705642164 | |
| 38 | Power PCB Assy | 9705647022 | 9705647022 | |
| ---- | Fuse 25A-250V | 0600086039 | 0600086039 | |
| ---- | Fuse 3.15A-250V | 0600222512 | 0600222512 | |
| ---- | Fuse 5A-250V | 0600222529 | 0600222529 | |
| ---- | Thermistor (Outdoor Temp.) | 9703516078 | 9703516078 | |
| ---- | Heat Exchanger Thermistor | 9704220042 | 9704220042 | |
| ---- | Thermistor (Discharge) | 9704219114 | 9704219114 | |
| ---- | Compressor Thermistor | 9900156022 | 9900156022 | |
| ---- | Thermistor | 9704265012 | 9704265012 | |
| ---- | Heatsink Thermistor | 9900311018 | 9900311018 | |
| ---- | Transformer | 9702334024 | 9702334024 | |
| ---- | Varistor | 0000361224 | 0000361224 | |
| ---- | Arrester | 0600280147 | 0600280147 | |
| ---- | Relay | 9900117016 | 9900117016 | |
| ---- | Relay | 9900007010 | 9900007010 | |
| ---- | Switch Push | 9703476013 | 9703476013 | |
| ---- | Switch Slide | 9701392018 | 9701392018 | |
| ---- | Drain Pipe (I-Type) | 9301102000 | 9301102000 | |
| ---- | Drain Pipe Packing | 9301143003 | 9301143003 | |
| ---- | Drain Cap | 313166024302 | 313166024302 | |

STANDARD ACCESSORIES

INDOOR UNIT ACCESSORIES

| Name and Shape | Q'ty | Application |
|---|-----------|--|
| Coupler heat insulation  | 2 | For indoor side pipe joint |
| Screw  | 2 | For installing the remote controller |
| Special nut A (large flange)  | 4 | For installing indoor unit |
| Special nut B (small flange)  | 4 | For installing indoor unit |
| Template  | 1 | For ceiling hole cutting |
| Binder  | 1 (small) | For remote controller and remote controller cord binding |
| Blower cover insulation  | 2 | For discharged air |
| Hook wire  | 2 | For installing intake grille |
| Remote controller  | 1 | |
| Remote controller cord  | 1 | For connecting the remote controller |

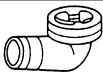
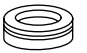
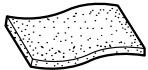
⚠ WARNING

- ① For the air conditioner to operate satisfactorily, install it as outlined in this installation instruction sheet.
- ② Connect the indoor unit and outdoor unit with the room air conditioner piping and cords available standards parts. This installation instruction sheet describes the correct connections using the installation set available from our standard parts.
- ③ Installation work must be performed in accordance with national wiring standards by authorized personnel only.
- ④ Also, do not use an extension cord.
- ⑤ Do not turn on the power until all installation work is complete.
- ⑥ Do not purge the air with refrigerants but use a vacuum pump to vacuum the installation.
- ⑦ There is not extra refrigerant in the outdoor unit for air purging.
- ⑧ Use a vacuum pump for R410A exclusively.
- ⑨ Using the same vacuum pump for different refrigerants may damage the vacuum pump or the unit.
- ⑩ Use a clean gauge manifold and charging hose for R410A exclusively.
- ⑪ If refrigerant leaks while work is being carried out, ventilate the area. If the refrigerant comes in contact with a flame, it produces a toxic gas.

- Be careful not to scratch the air conditioner when handling it.
- After installation, explain correct operation to the customer, using the operating manual.
- Let the customer keep this installation instruction sheet because it is used when the air conditioner is serviced or moved.

STANDARD PARTS

The following installation parts are furnished.
Use them as required.

| Name and Shape | Q'ty | Application |
|--|------|---|
| Drain pipe  | 1 | For outdoor unit drain piping work (May not be supplied, depending on the model.) |
| Drain cap  | 2 | |
| Insulation (seal)  | 1 | For filling in a gap at the entrance of connection cords |

CONNECTION PIPE REQUIREMENT

⚠ CAUTION

The maximum lengths of this product are shown in the following table. If the units are further apart than this, correct operation can not be guaranteed.

| Model Type | Diameter | | Pipe length | | Maximum height (between indoor and outdoor) |
|--------------------|-------------------|--------------------|-------------|------|--|
| | Liquid | Gas | MAX. | MIN. | |
| 30,000 BTU/h class | 9.52 mm (3/8 in.) | 15.88 mm (5/8 in.) | 50 m | 5 m | 30 m |
| 36,000 BTU/h class | | | | | |
| 45,000 BTU/h class | | | 70 m | | |

- Use pipe with water-resistant heat insulation.

⚠ CAUTION

Install heat insulation around both the gas and liquid pipes. Failure to do so may cause water leaks.
Use heat insulation with heat resistance above 120 °C. (Reverse cycle model only)
In addition, if the humidity level at the installation location of the refrigerant piping is expected to exceed 70%, install heat insulation around the refrigerant piping. If the expected humidity level is 70-80%, use heat insulation that is 15 mm or thicker and if the expected humidity exceeds 80%, use heat insulation that is 20 mm or thicker.
If heat insulation is used that is not as thick as specified, condensation may form on the surface of the insulation.
In addition, use heat insulation with heat conductivity of 0.045 W/(mK) or less (at 20 °C).

0511G2943