



# SPLIT TYPE ROOM AIR CONDITIONER

WALL MOUNTED type

# SERVICE MANUAL

Models	Indoor unit	Outdoor unit
	ASH9ASGCW	AOH9ANGC
	ASH9RSGCW	AOH9RSGC
	ASH12ASGCW	AOH12ASGC
	ASH12RSGCW	AOH12RSGC

## C O N T E N T S

SPECIFICATIONS .....	1
REFRIGERANT SYSTEM DIAGRAM .....	2
CIRCUIT DIAGRAM .....	4
INDOOR PRINTED CIRCUIT BOARD CIRCUIT DIAGRAM ..	6
P.C. BOARD LAYOUTS .....	8
REMOTE CONTROL UNIT CIRCUIT DIAGRAM .....	11
DISASSEMBLY ILLUSTRATION .....	13
PARTS LIST .....	20

# S P E C I F I C A T I O N S

TYPE		COOL	COOL & HEAT	COOL	COOL & HEAT
INDOOR UNIT		ASH9ASGCW	ASH9RSGCW	ASH12ASGCW	ASH12RSGCW
OUTDOOR UNIT		AOH9ANGC	AOH9RSGC	AOH12ASGC	AOH12RSGC
COOLING CAPACITY	(kW)	2.75 - 2.70	2.75 - 2.70	3.50 - 3.45	3.45 - 3.40
HEATING CAPACITY	(kW)	————	3.35 - 3.30	————	4.05 - 3.95

## ELECTRICAL DATA

POWER SOURCE	(V)	240 - 220				
FREQUENCY	(Hz)	50				
RUNNING CURRENT	(A)	COOLING	4.7 - 4.6	4.5 - 4.6	6.3 - 6.1	5.9 - 5.8
		HEATING	————	4.1 - 4.2	————	5.9 - 5.8
INPUT WATTS	(kW)	COOLING	1.03 - 0.97	1.03 - 0.98	1.340 - 1.265	1.26 - 1.21
		HEATING	————	0.94 - 0.89	————	1.28 - 1.21
EER	(kW/kW)	COOLING	2.67 - 2.78	2.67 - 2.76	2.61 - 2.73	2.74 - 2.81
		HEATING	————	3.56 - 3.71	————	3.16 - 3.26
MOISTURE REMOVAL	(ℓ /hr)	1.3	1.3	1.8	1.8	
AIR CIRCULATION-HI	(m <sup>3</sup> /hr)	480	COOL 495 HEAT 510	495	COOL 510 HEAT 510	

## COMPRESSOR

TYPE	Hermetic type, Permanent split condenser, 2 pole, Single phase, Induction motor				
CODE	2PS180D5AA02 240 - 220V 50Hz	80697645B 240 - 220V 50Hz	80615945B 240 - 220V 50Hz	80615945B 240 - 220V 50Hz	
REFRIGERANT	R-22 (g)	670	900	750	1,100

## FAN MOTOR

POWER SOURCE	(V)	240 - 220			
INDOOR UNIT	HI-SPEED (r.p.m.)	1,300	COOL 1,300 HEAT 1,330	1,330	COOL 1,330 HEAT 1,330
	MED-SPEED (r.p.m.)	1,200	COOL 1,210 HEAT 1,180	1,250	COOL 1,260 HEAT 1,180
	LO-SPEED (r.p.m.)	1,100	COOL 1,140 HEAT 1,030	1,170	COOL 1,190 HEAT 1,030
	QUIET (r.p.m.)	1,040	COOL 1,070 HEAT 970	1,080	COOL 1,120 HEAT 970
OUTDOOR UNIT	(r.p.m.)	705 - 660	720 - 675	790 - 760	710 - 665

## DIMENSIONS

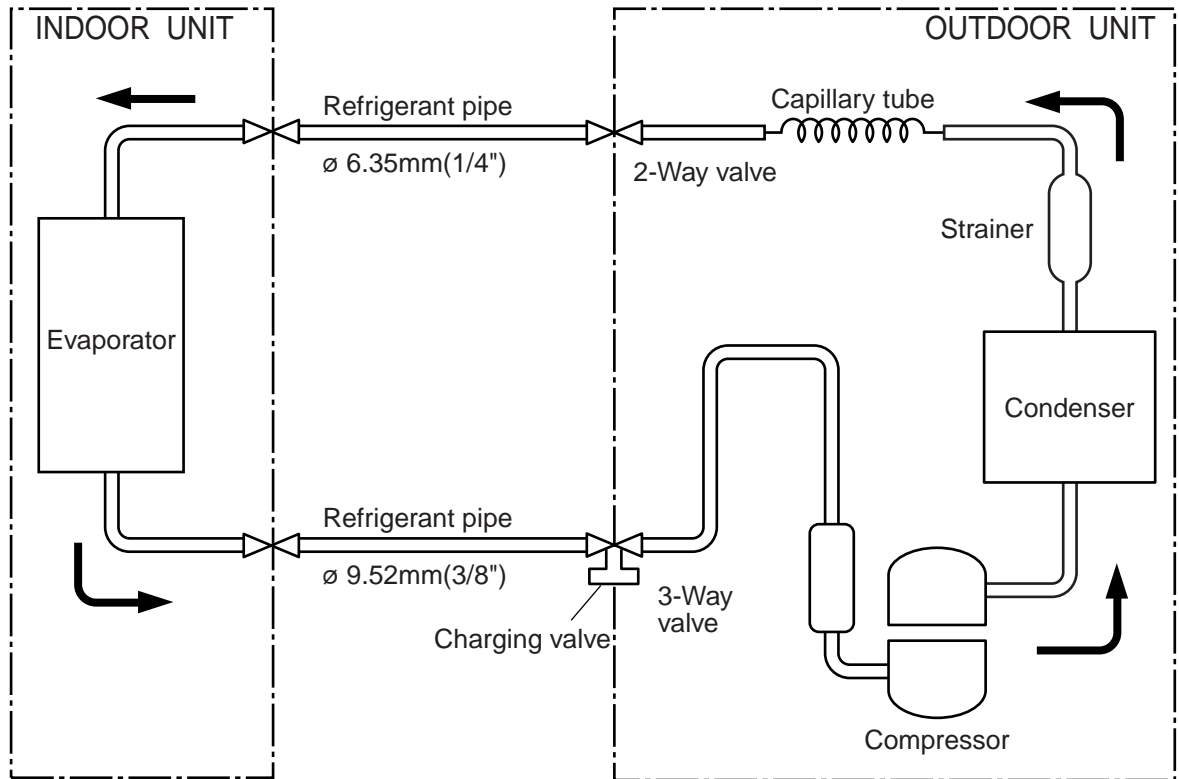
INDOOR UNIT	H x W x D (mm)	260 x 815 x 168	
OUTDOOR UNIT		535 x 695 x 250	

## WEIGHTS

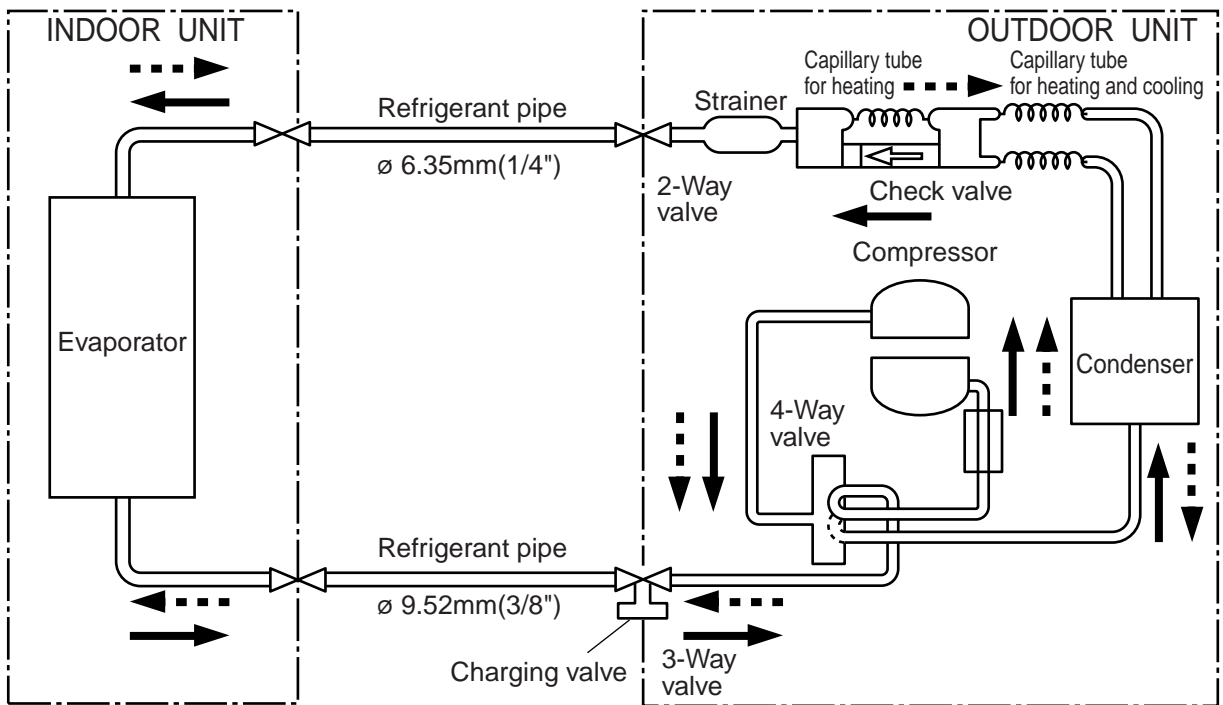
INDOOR UNIT	GROSS / NET (kg)	10 / 8			
OUTDOOR UNIT		29 / 26	31 / 28	33 / 30	36 / 33

# REFRIGERANT SYSTEM DIAGRAM

**Models : ASH9ASGCW / AOH9ANGC**

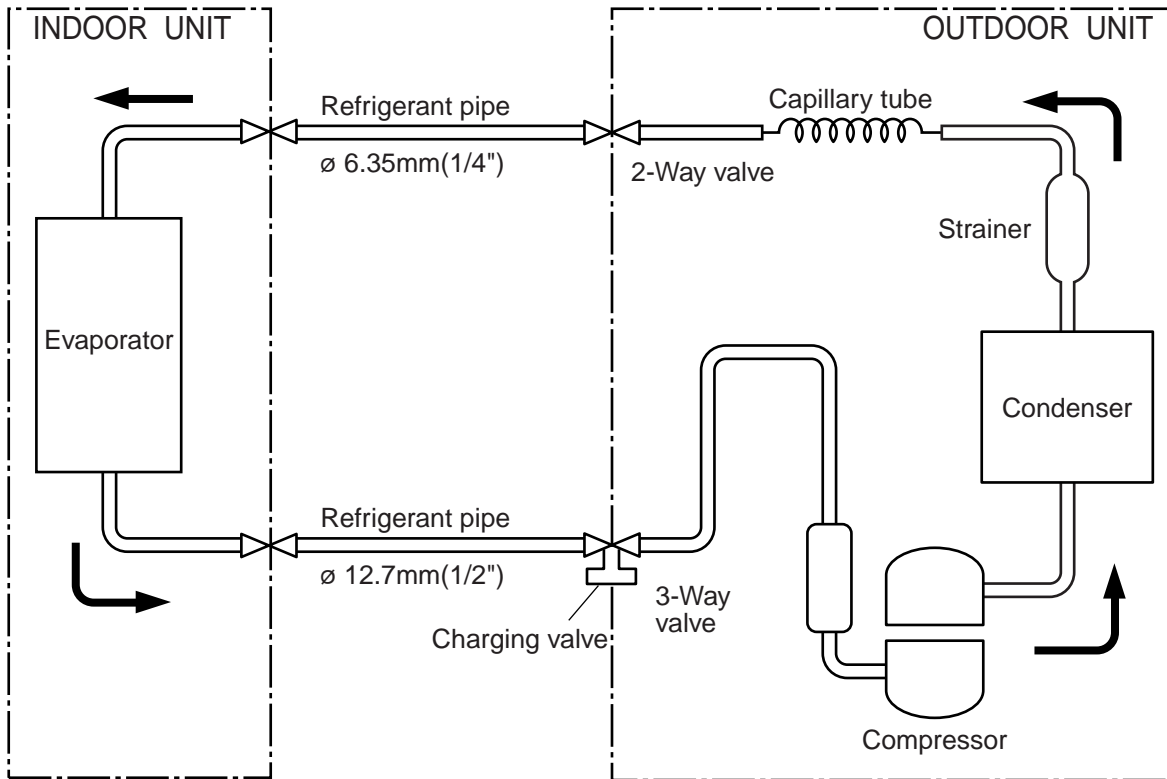


**Models : ASH9RSGCW / AOH9RSGC**

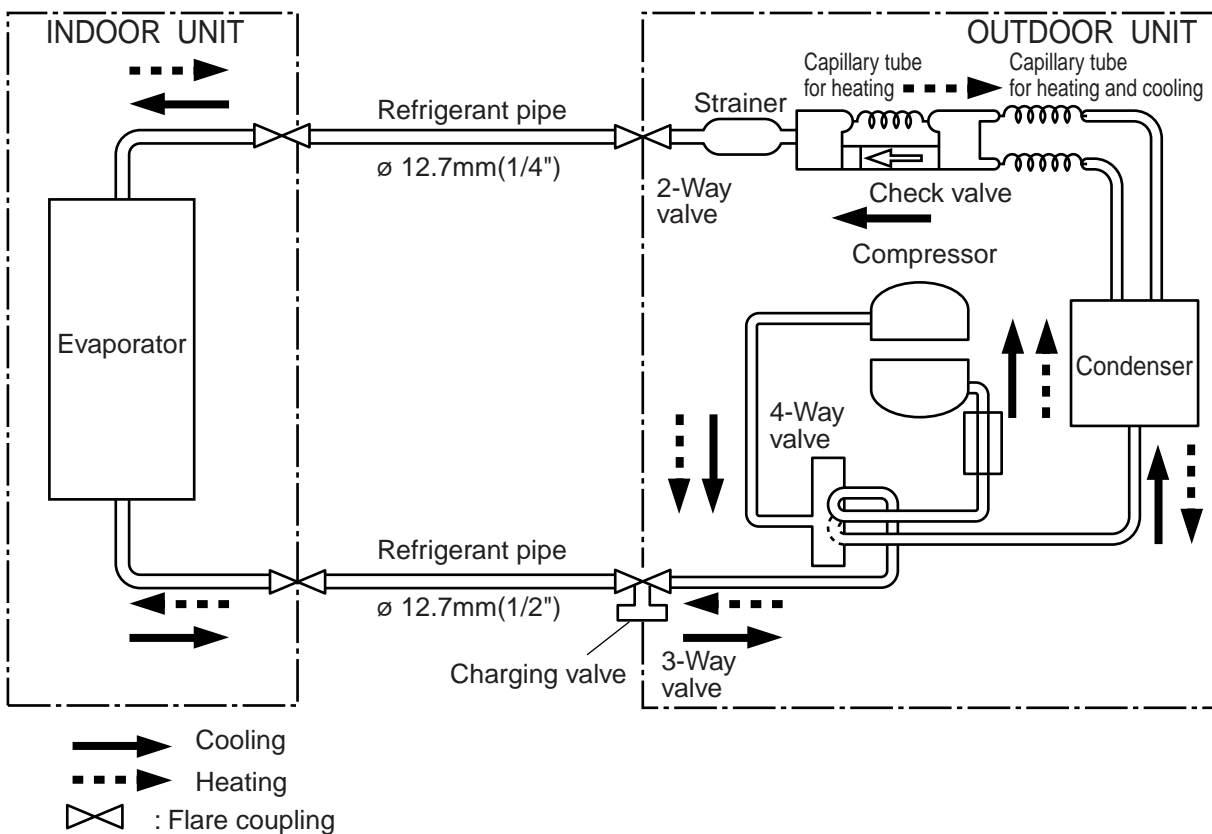


- Cooling
- Heating
- : Flare coupling

**Models : ASH12ASGCW / AOH12ASGC**

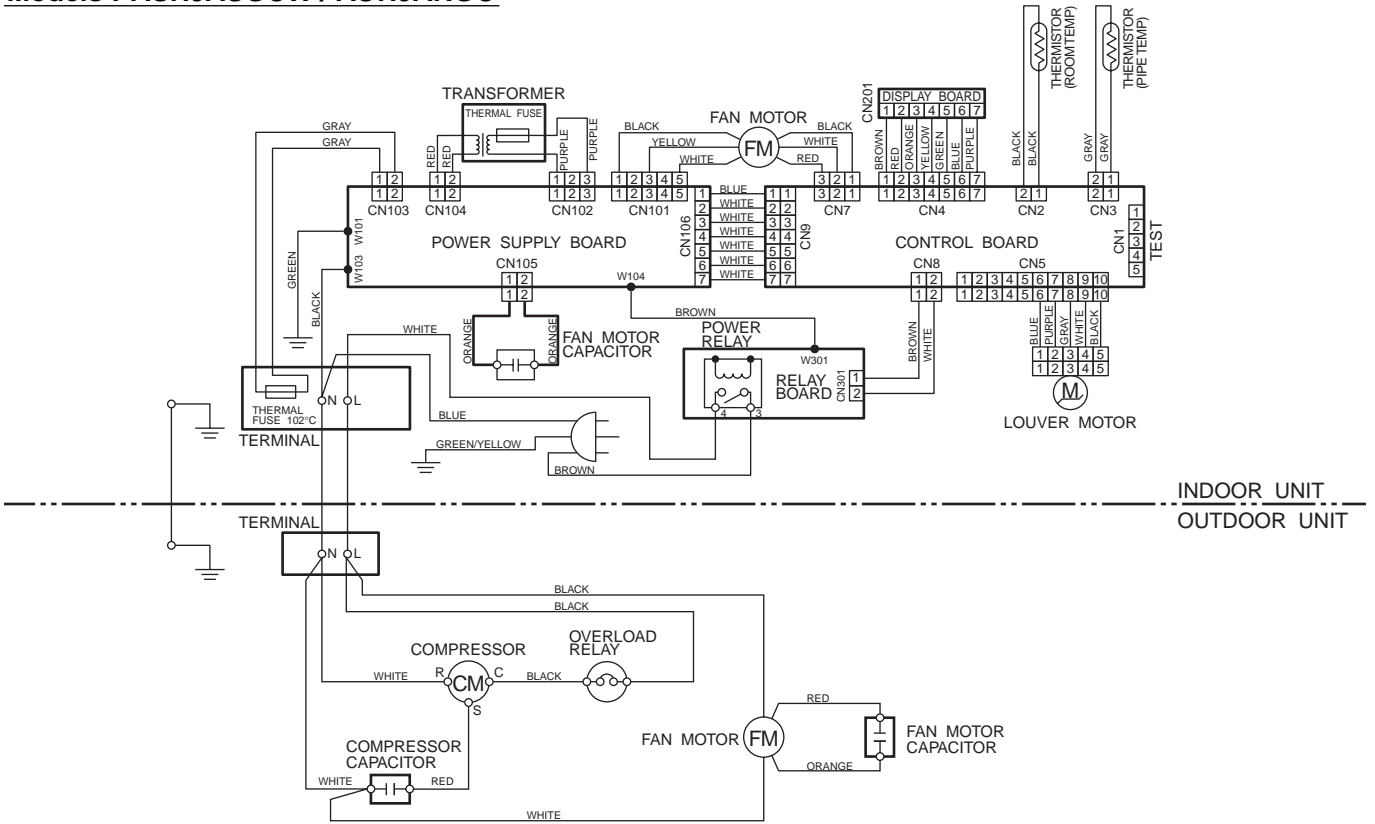


**Models : ASH12RSGCW / AOH12RSGC**

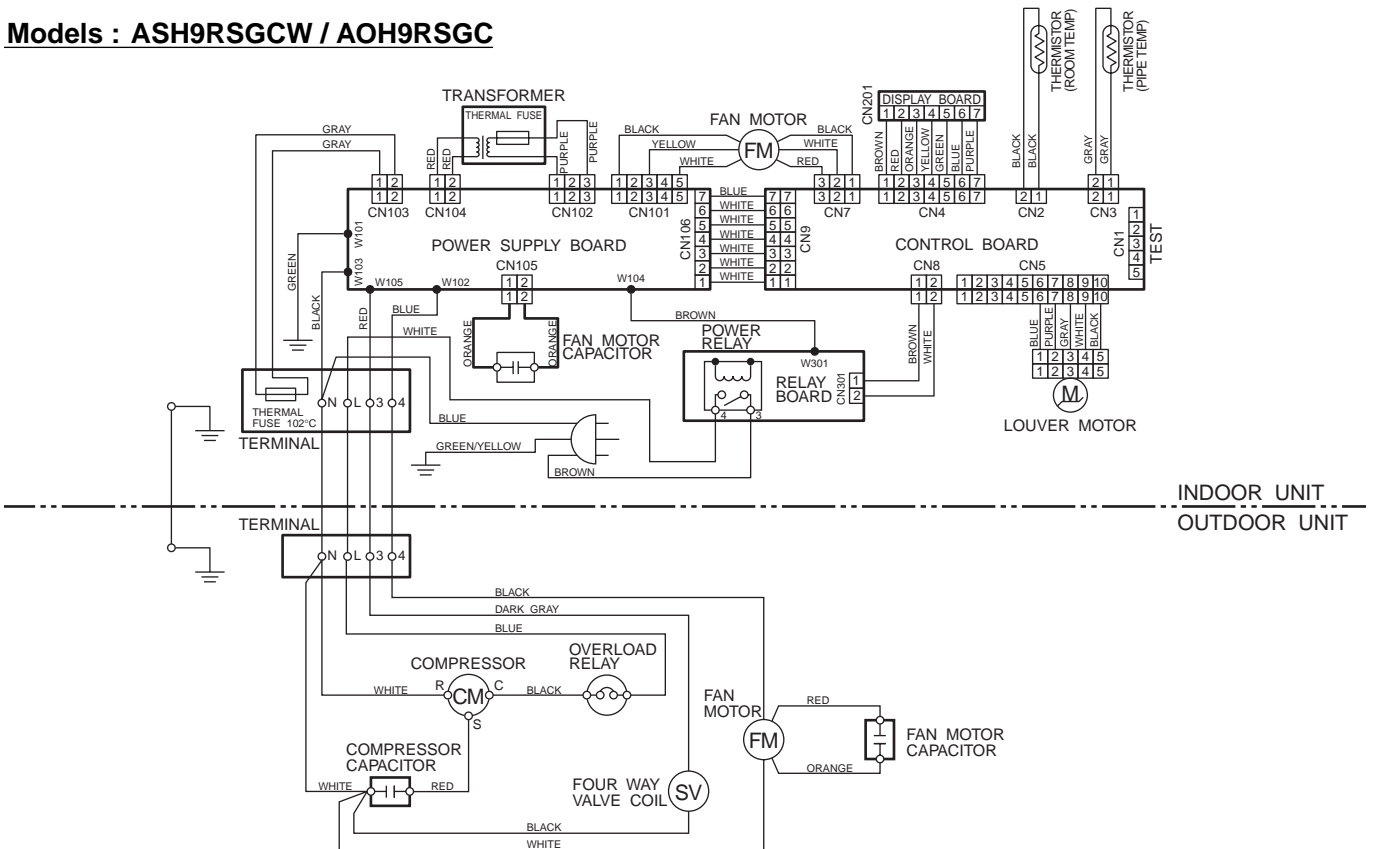


# CIRCUIT DIAGRAM

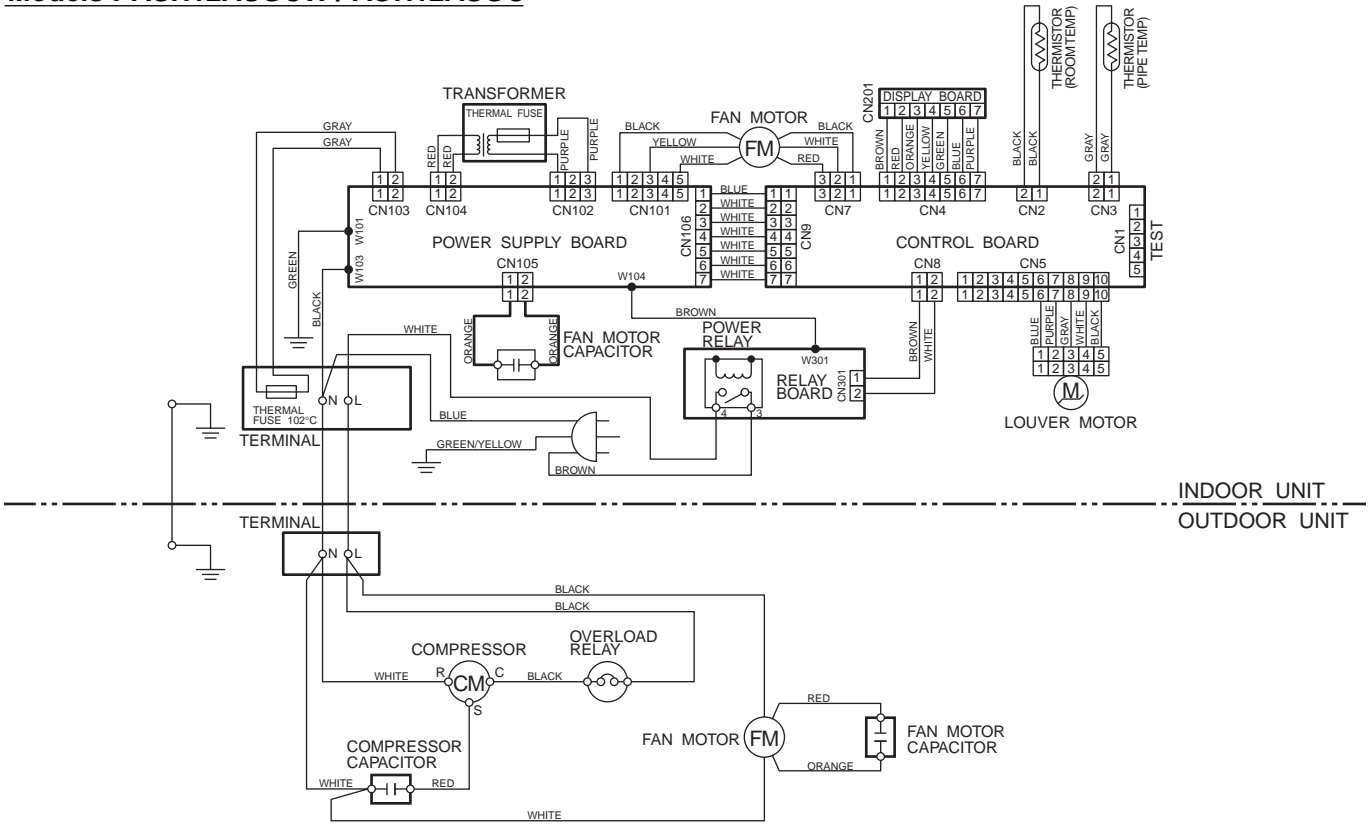
**Models : ASH9ASGCW / AOH9ANGC**



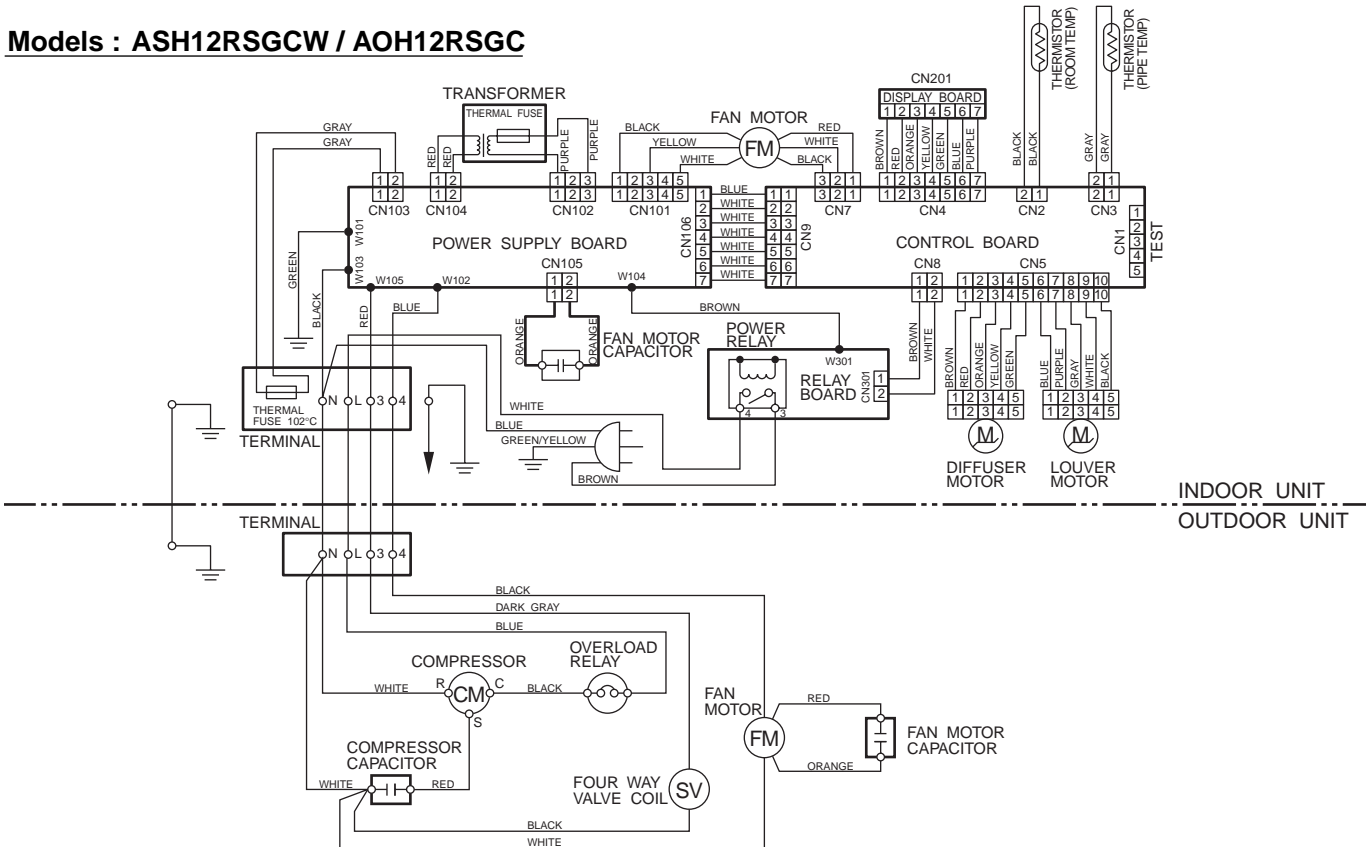
**Models : ASH9RSGCW / AOH9RSGC**



**Models : ASH12ASGCW / AOH12ASGC**

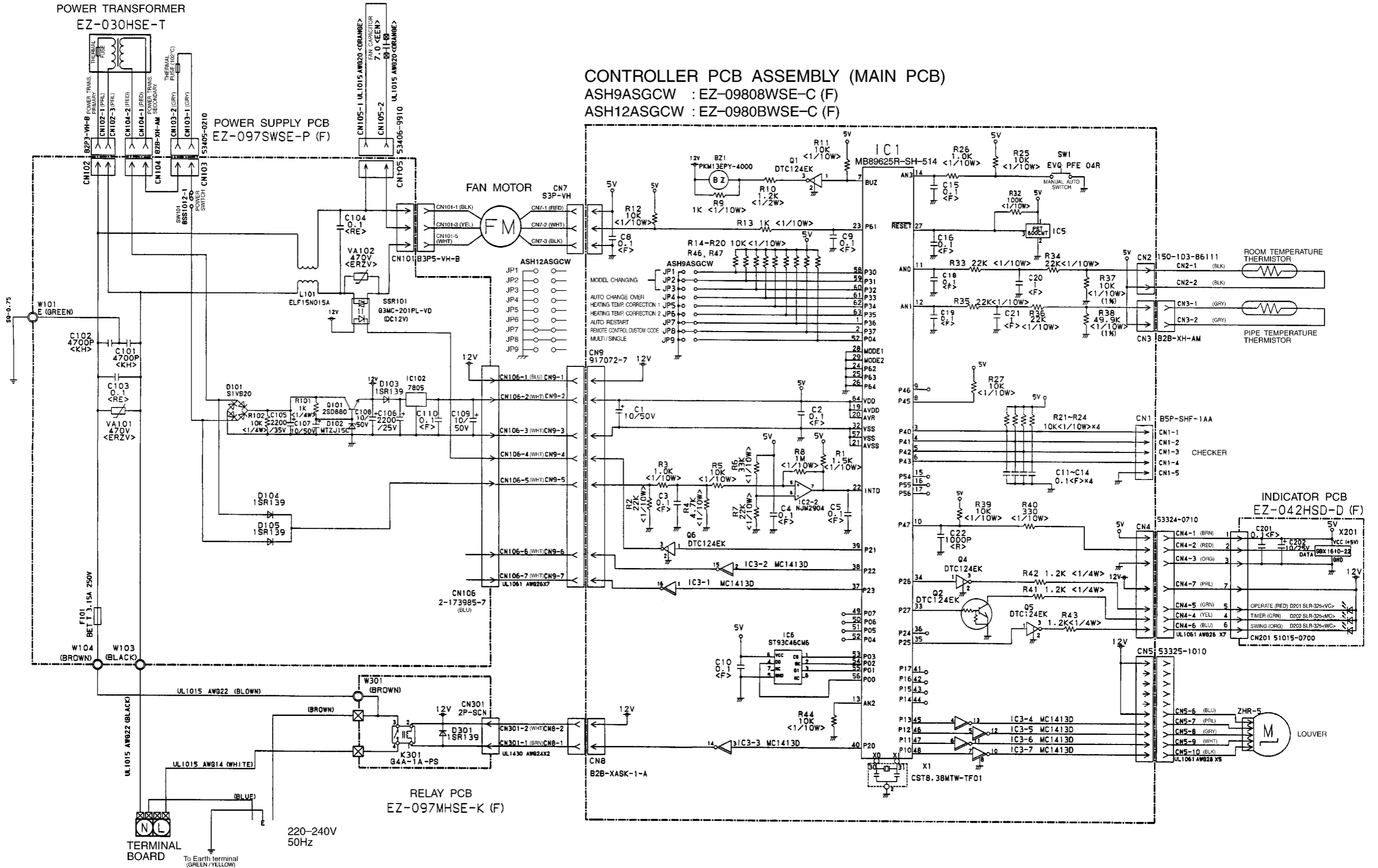


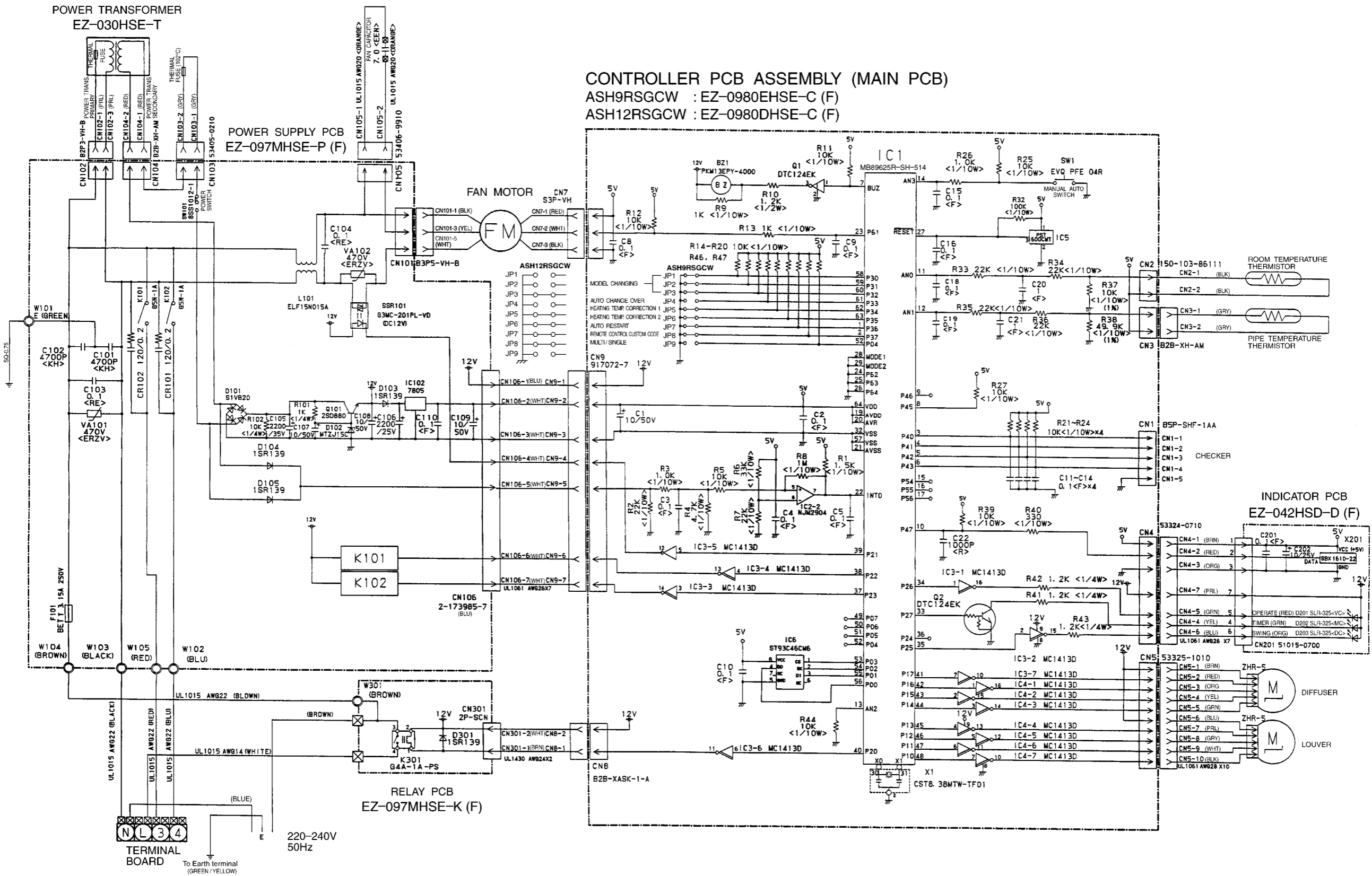
**Models : ASH12RSGCW / AOH12RSGC**



# INDOOR PRINTED CIRCUIT BOARD CIRCUIT DIAGRAM

Models : ASH9ASGCW, ASH12ASGCW

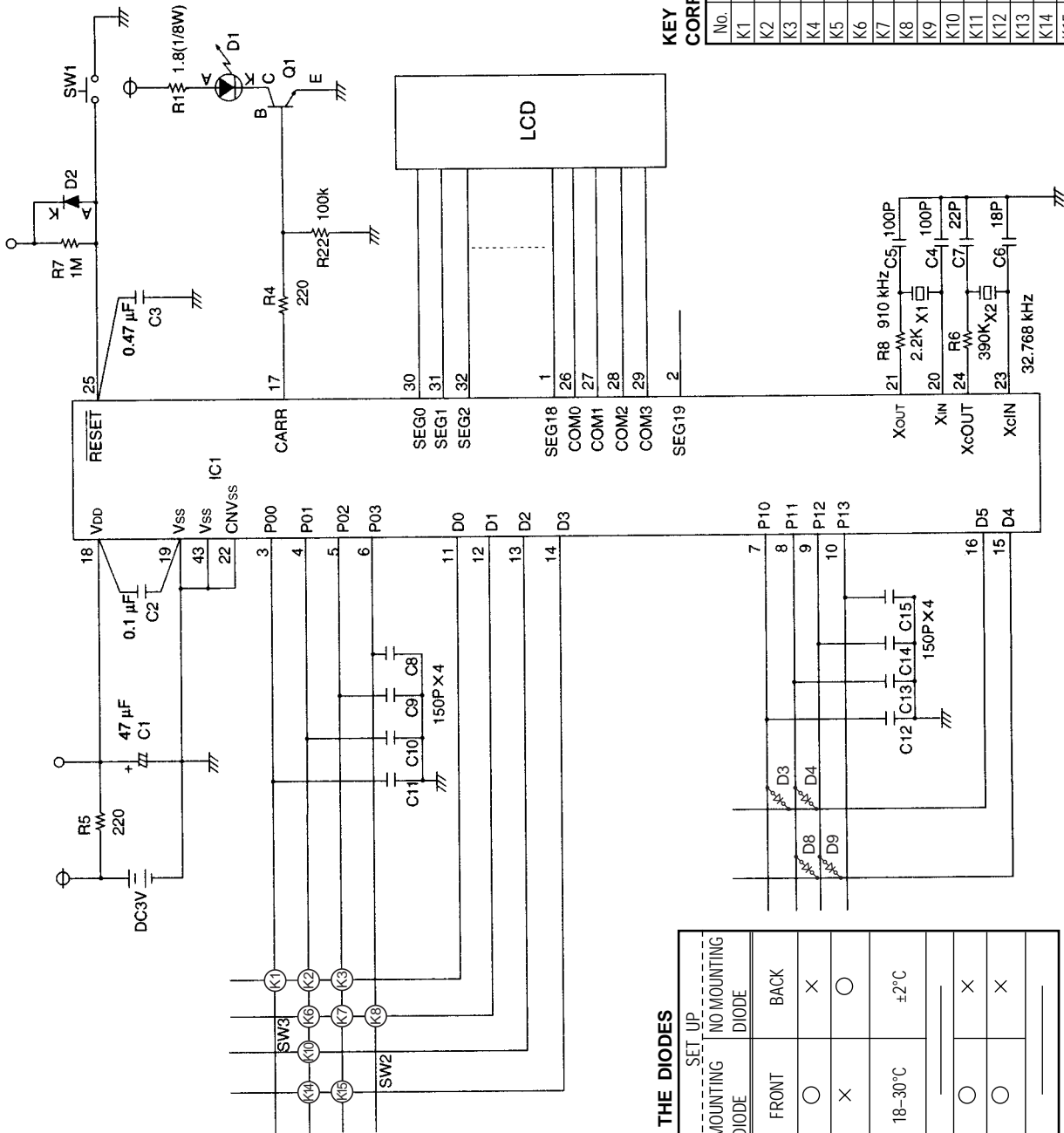






# REMOTE CONTROL UNIT CIRCUIT DIAGRAM

Models : **ASH9ASGCW**  
**ASH12ASGCW**



**CHANGE OF FUNCTION BY THE DIODES**

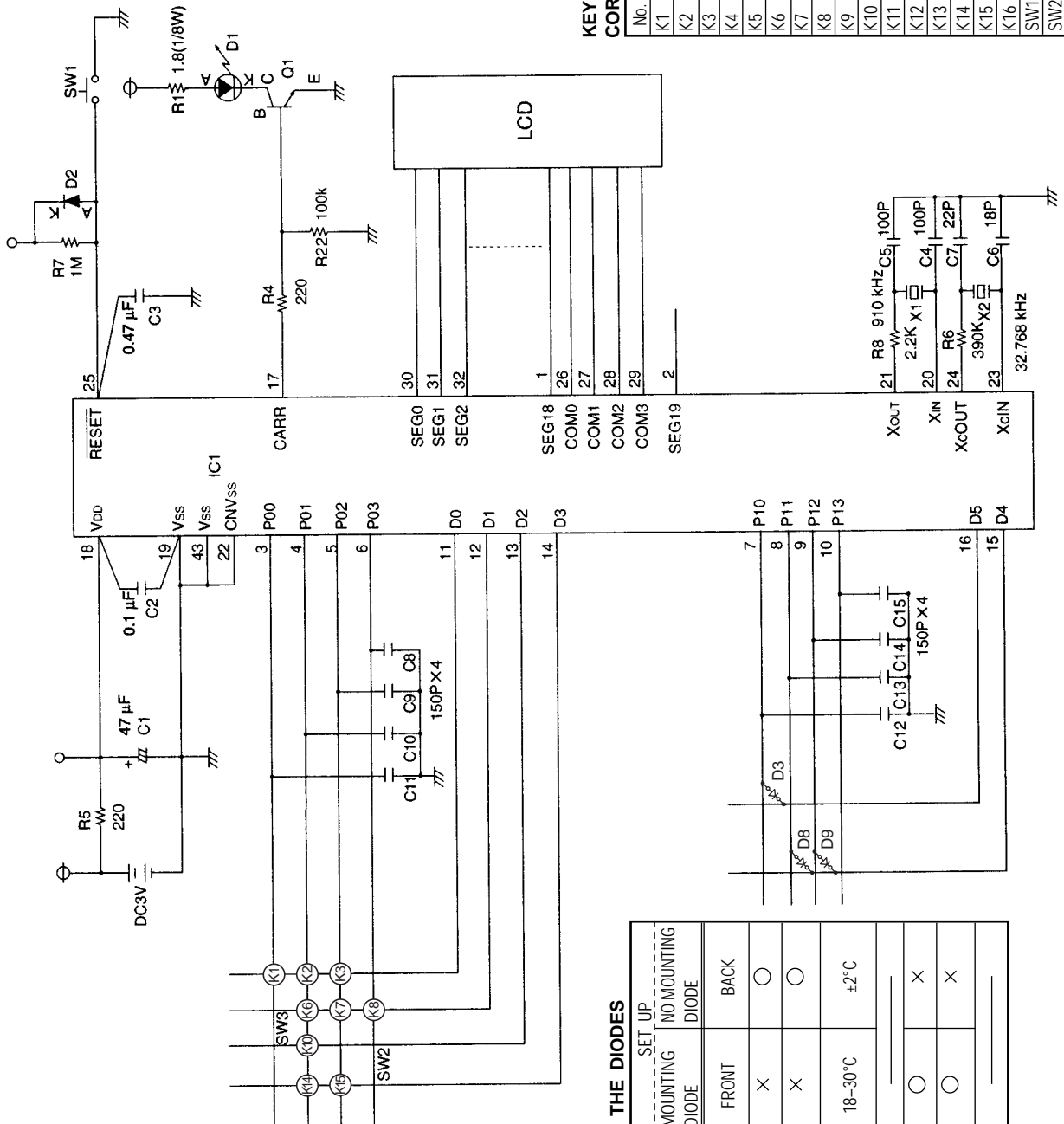
No.	FUNCTION	SET UP	
		MOUNTING DIODE	NO MOUNTING DIODE
D3	TRANSMITTING CODE SWITCHING	FRONT	BACK
D4	HEATING MODE	○	×
D5	INVERTING SIGNAL	×	○
D6	TEMPERATURE DISPLAY OF AUTOMATIC OPERATION	18-30°C	±2°C
D7	NO SWITCHING FUNCTION	—	—
D8	QUIET	○	×
D9	FAN MODE	○	×
D10	NO SWITCHING FUNCTION	—	—

○ : Possible  
× : Impossible

**KEY NO. KEY FUNCTION CORRESPONDENCE TABLE**

No.	KEY FUNCTION
K1	MASTER CONTROL
K2	SET TEMP. (+) SET TIME (+)
K3	FAN CONTROL
K4	
K5	
K6	SET TEMP. (-) SET TIME (-)
K7	AIR FLOW DIRECTION
K8	SWING LOUVER
K9	
K10	START / STOP
K11	
K12	
K13	
K14	SLEEP
K15	TIMER
K16	
SW1	ACL
SW2	TIME ADJUST
SW3	TEST RUN

**Models : ASH9RSGCW  
ASH12RSGCW**



**KEY NO. KEY FUNCTION CORRESPONDENCE TABLE**

No.	KEY FUNCTION
K1	MASTER CONTROL
K2	SET TEMP. (+), SET TIME (+)
K3	FAN CONTROL
K4	
K5	
K6	SET TEMP. (-), SET TIME (-)
K7	AIR FLOW DIRECTION
K8	SWING LOUVER
K9	
K10	START / STOP
K11	
K12	
K13	
K14	SLEEP
K15	TIMER
K16	
SW1	ACL
SW2	TIME ADJUST
SW3	TEST RUN

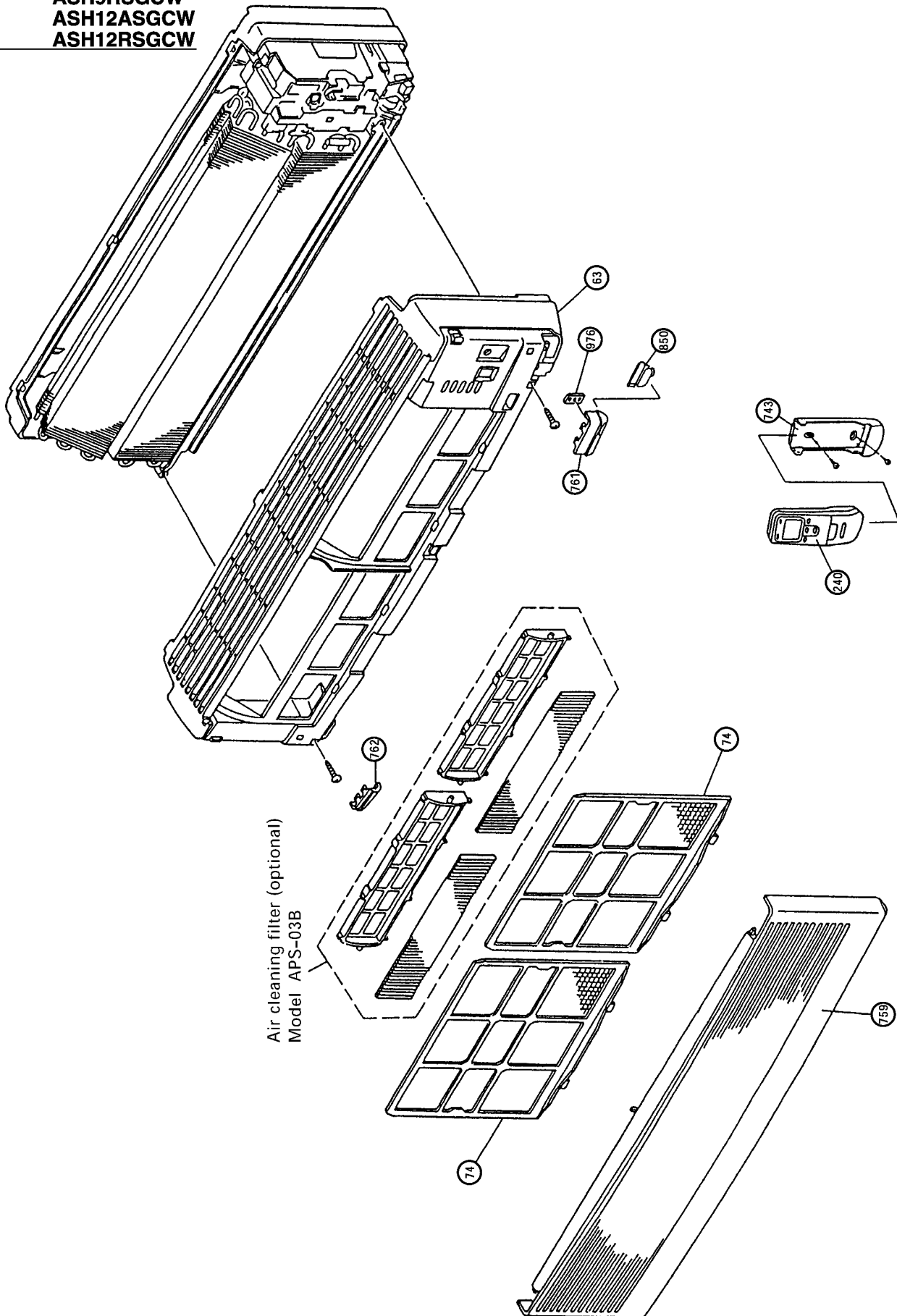
**CHANGE OF FUNCTION BY THE DIODES**

No.	FUNCTION	SET UP	
		MOUNTING DIODE	NO MOUNTING DIODE
D3	TRANSMITTING CODE SWITCHING	FRONT	BACK
D4	HEATING MODE	X	○
D5	INVERTING SIGNAL	X	○
D6	TEMPERATURE DISPLAY OF AUTOMATIC OPERATION	18-30°C	±2°C
D7	NO SWITCHING FUNCTION		
D8	QUIET	○	X
D9	FAN MODE	○	X
D10	NO SWITCHING FUNCTION		

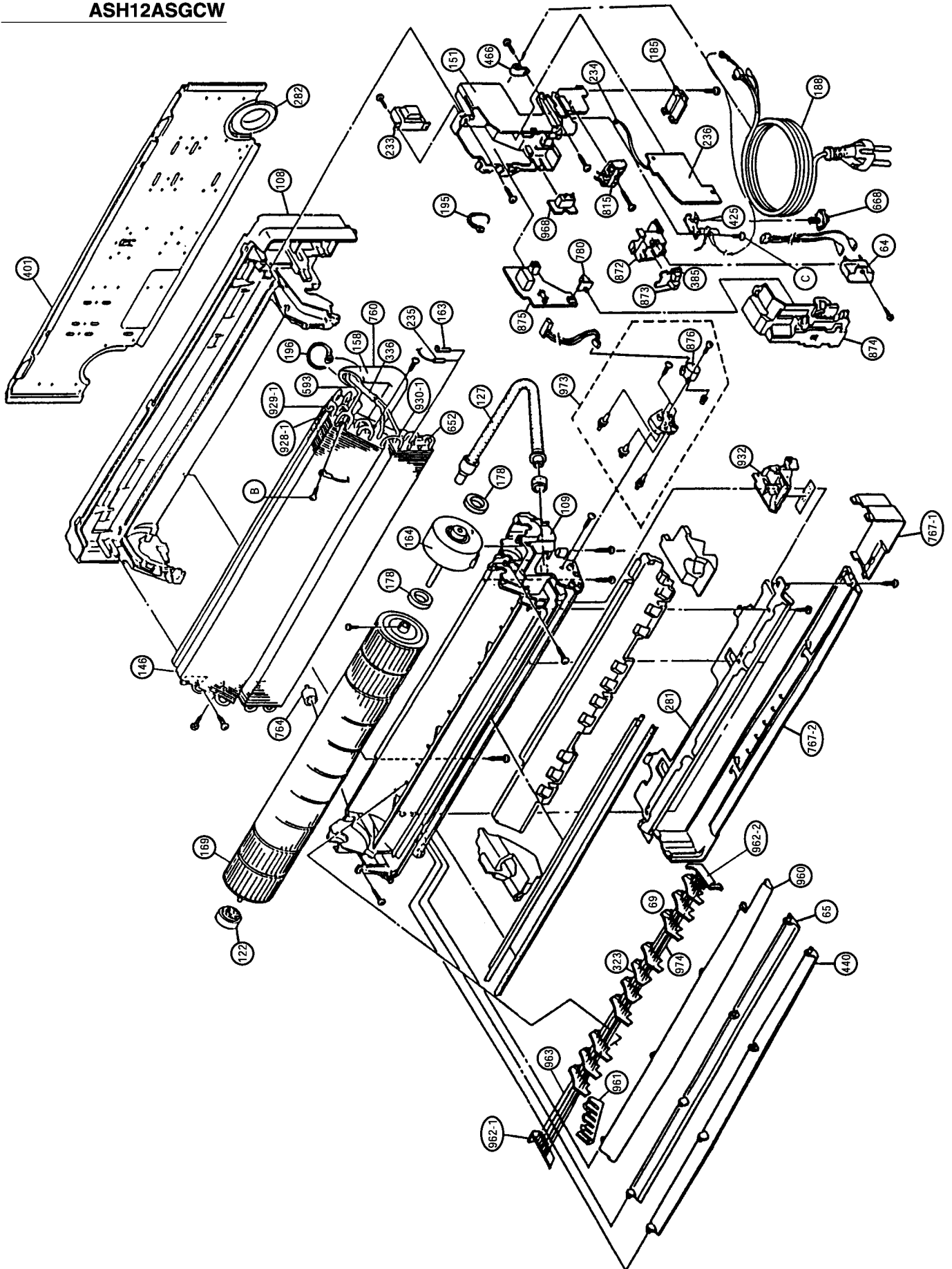
○ : Possible  
X : Impossible

# DISASSEMBLY ILLUSTRATION

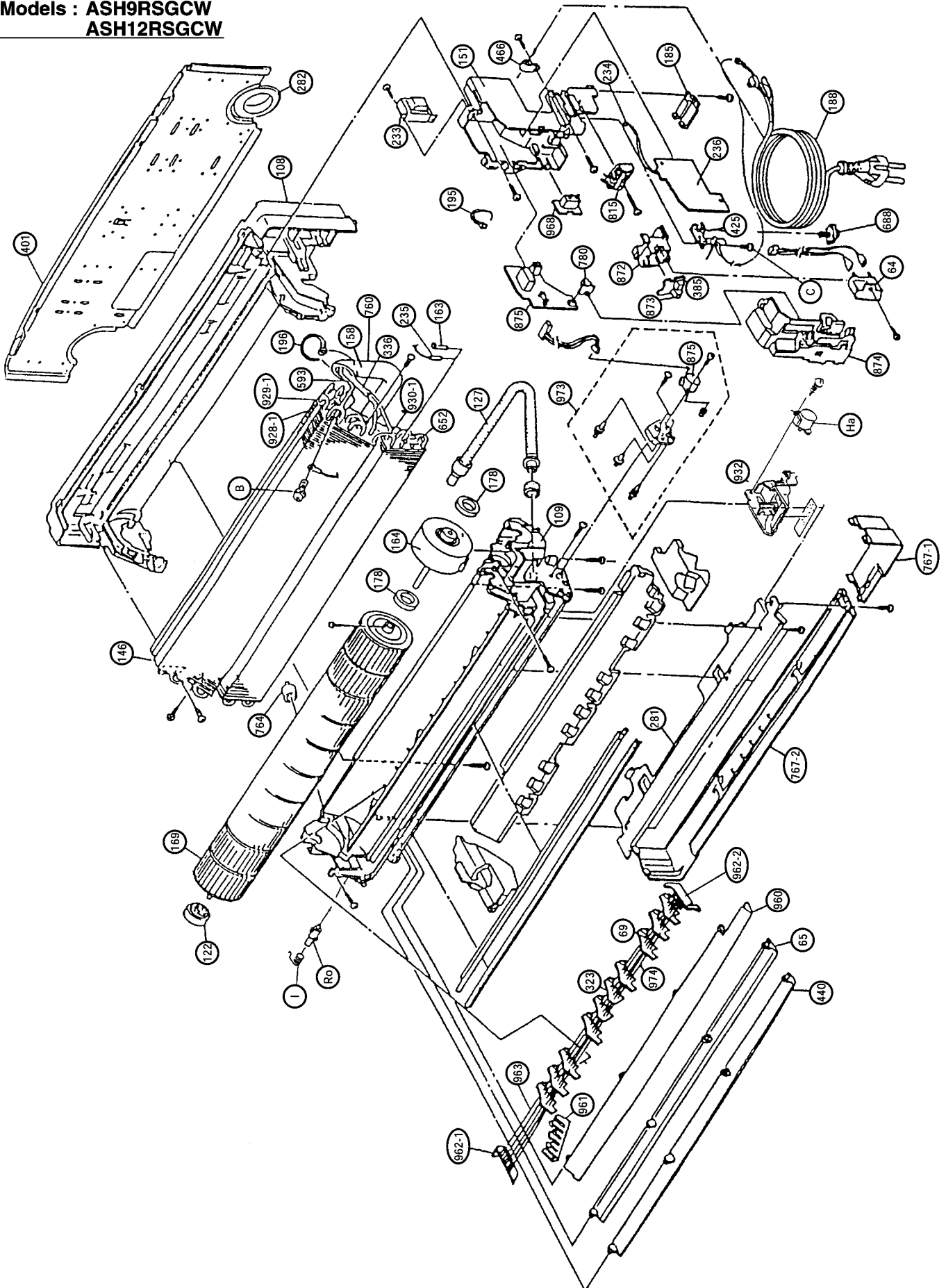
Models : **ASH9ASGCW**  
**ASH9RSGCW**  
**ASH12ASGCW**  
**ASH12RSGCW**



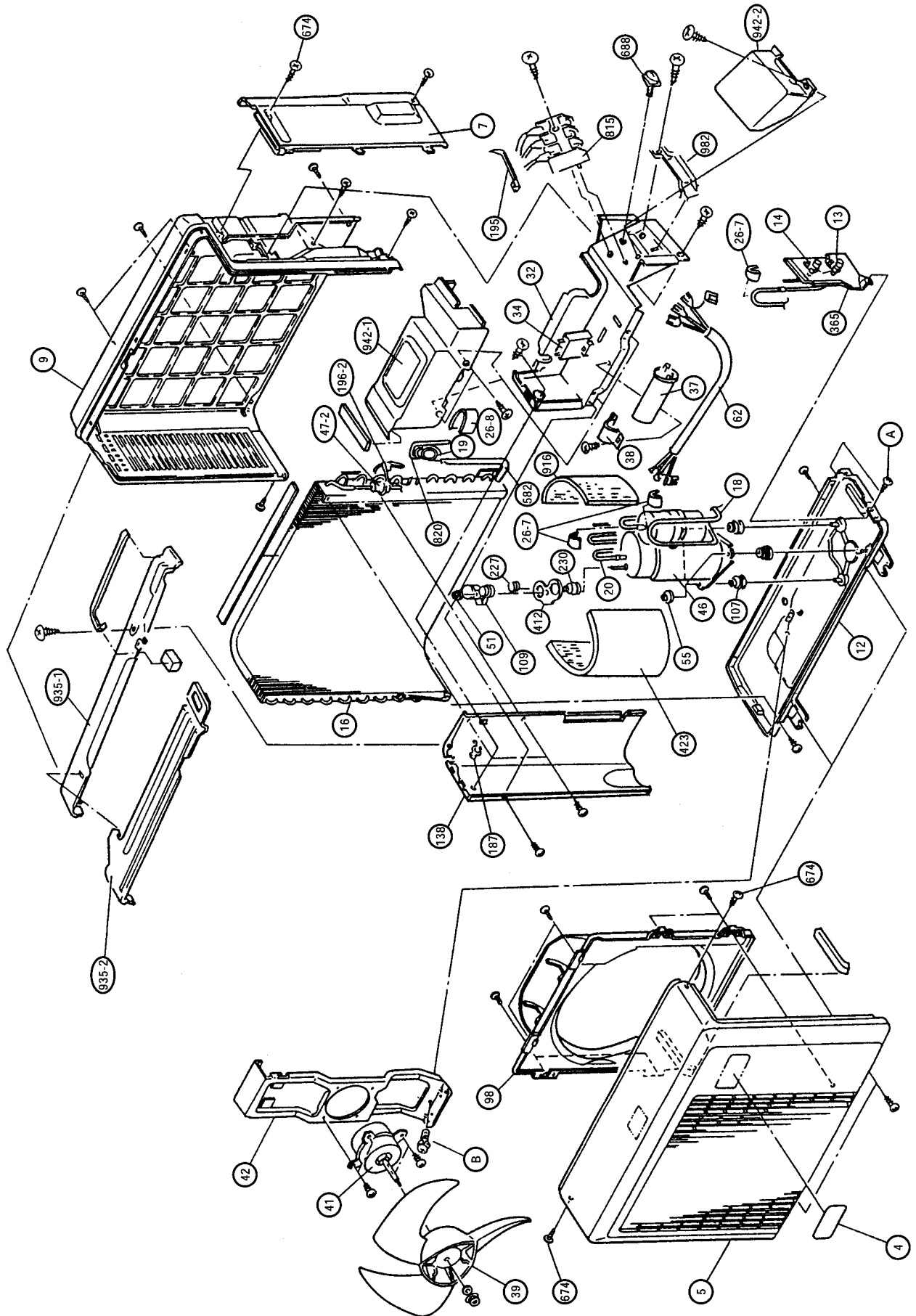
Models : ASH9ASGCW  
ASH12ASGCW



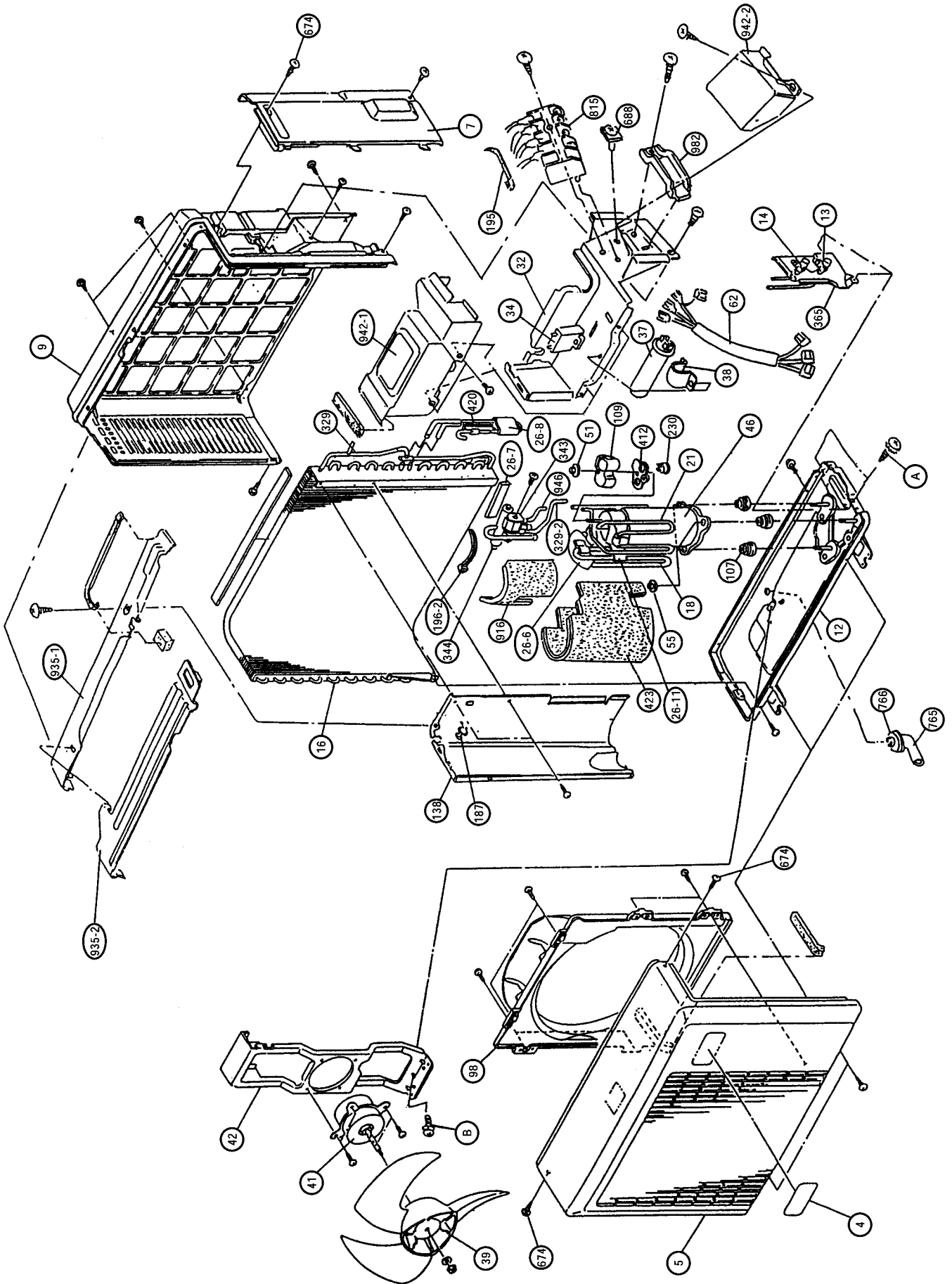
Models : ASH9RSGCW  
ASH12RSGCW



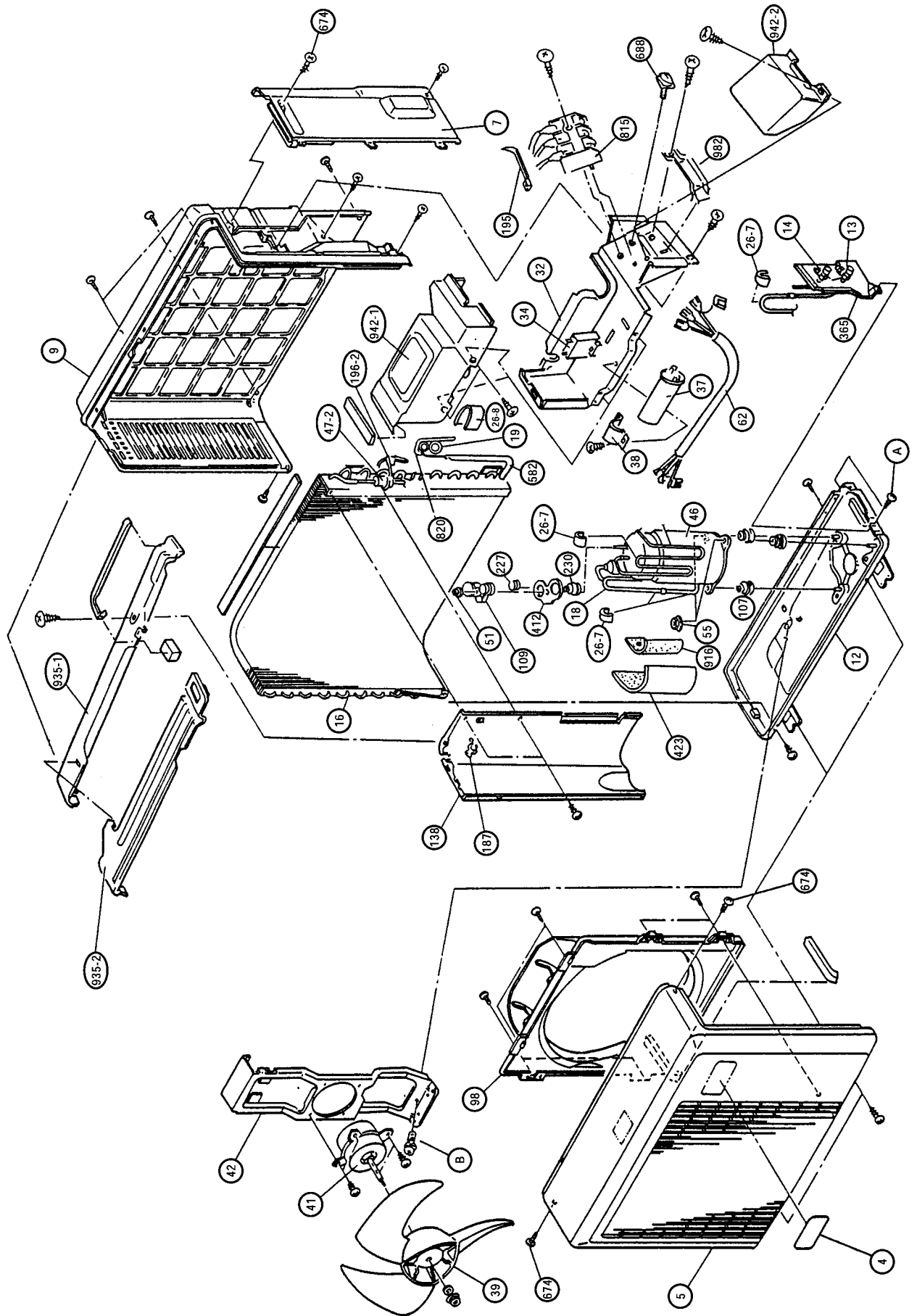
**Model : AOH9ANGC**



Model : AOH9RSGC

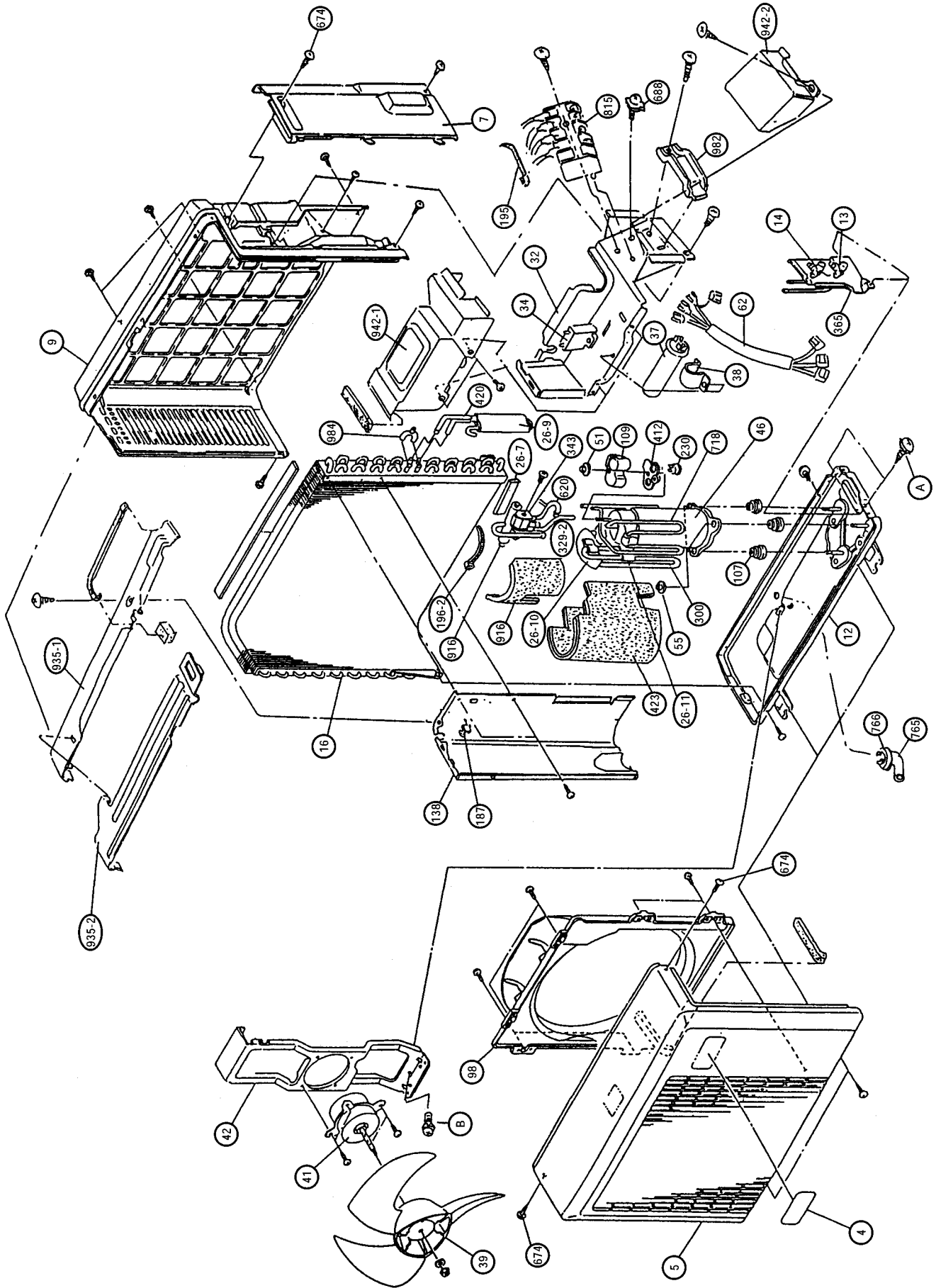


Model : AOH12ASGC





Model : AOH12RSGC



# PARTS LIST

When you order parts, please make a photocopy of this page and fill the number of the parts in the "Order" column.

## INDOOR UNIT

Ref. No.	Description	Part No.				Ord. Q'ty
		ASH9ASGCW	ASH9RSGCW	ASH12ASGCW	ASH12RSGCW	
63	Front Panel	9305436019	9305436019	9305436019	9305436019	
64	Capacitor (Fan Motor)	9700468103	9700468103	9700468103	9700468103	
65	Flow Control Panel-Z	9305443017	9305443017	9305443017	9305443017	
69	Louver-A	9305415014	9305415014	9305415014	9305415014	
74	Filter	9305444014	9305444014	9305444014	9305444014	
108	Base	9305427031	9305427031	9305427031	9305427031	
109	Casing	9305411016	9305411016	9305411016	9305411016	
122	Shaft Holder-B	9303066010	9303066010	9303066010	9303066010	
127	Drain Hose Assy	9305550029	9305550029	9305550029	9305550029	
146	Evaporator Assy	9308203021	9308555014	9308555014	9308555014	
151	Control Box	9305448036	9305448036	9305448036	9305448036	
158	Connecting Pipe Assy	9306416010	9306416010	9307073007	9307073007	
163	Thermistor Spring	313104262701	313104262701	313104262701	313104262701	
164	Fan Motor	9600917015	9600917015	9600917015	9600917015	
169	Cross-flow Fan Assy	9307836015	9307836015	9307836015	9307836015	
178	Motor Cushion-A	9306274009	9306274009	9306274009	9306274009	
185	Wire Clamp	9305940004	9305940004	9305940004	9305940004	
188	Power Cord Assy	9702595012	9702595012	9702595012	9702595012	
195	Clamp SKB-100	313361275805	313361275805	313361275805	313361275805	
196	Clamp SKB-150	313035356905	313035356905	313035356905	313035356905	
233	Power Transformer	9701803026	9701565023	9701803026	9701803026	
234	Thermistor Assy-(Room)	9702324018	9702324018	9702324018	9702324018	
235	Thermistor Assy-(Pipe)	9702425012	9702425012	9702425012	9702425012	
236	Controller PCB Assy	9702889036	9702884024	9702889043	9702884017	
240	Remote Control Unit	9307113048	9307113055	9307113048	9307113055	
281	Clamp Metal (Pipe)	9306192006	9305430000	9306192006	9305430000	
282	Wall Cap-B (Accessory)	313714296205	313714296205	313714296205	313714296205	
323	Louver-B	9305597017	9305597017	9305597017	9305597017	
336	Suction Pipe-A Assy	9305741014	9305741014	9306175009	9306175009	
385	Indicator PCB Assy	9701364213	9701364213	9701364213	9701364213	
401	Wall Hook Bracket	9304358008	9304358008	9304358008	9304358008	
425	Earth Terminal	9306483005	9306483005	9306483005	9306483005	
440	Flow Control Panel-U	9306173012	9306173012	9306173012	9306173012	
466	Clamp NK-4N	313714328805	313714328805	313714328805	313714328805	
593	Discharge Pipe-A Assy	9306417017	9306417017	9306417017	9306417017	
652	Thermistor Holder Pipe	313714262805	313714262805	313714262805	313714262805	
743	Remote Control Holder Case	9305642014	9305642014	9305642014	9305642014	
759	Intake Grille	9305441044	9305441044	9305441044	9305441044	
760	Insulation (Pipe)-E	9304607007	9304607007	9304607007	9304607007	
761	Side Cover-R	9305996018	9305996018	9305996018	9305996018	
762	Side Cover-L	9305437047	9305437047	9305437047	9305437047	
764	Drain Cap Assy	9304150008	9304150008	9304150008	9304150008	
767-1	Bottom Cover-A	9305428038	9305428038	9305428038	9305428038	
767-2	Bottom Cover-B	9305429035	9305429035	9305429035	9305429035	
780	Key Top (Slide Switch)	9303526002	9303526002	9303526002	9303526002	
815	Terminal-2P	9701955022	-----	9701955022	-----	
815	Terminal-4P	-----	9701955039	-----	9701955039	
850	Window (Receiver)	9305439010	9305439010	9305439010	9305439010	
872	Indicator Case	9305978014	9305978014	9305978014	9305978014	
873	Lamp Cover	9305451012	9305451012	9305451012	9305451012	
874	Control Box Cover	9305977017	9305977017	9305977017	9305977017	
875	Power Supply PCB Assy	9702440213	9702440220	9702440213	9702440220	
876-1	Step Motor	9305780006	9305780006	9305780006	9305780006	
876-2	Step Motor	-----	9305892006	-----	9305892006	
928-1	U-Pipe (BB)	9305747009	9305747009	9305747009	9305747009	
929-1	U-Pipe (V)	9305748006	9305748006	9305748006	9305748006	
930-1	U-Pipe (W)	9305749003	9305749003	9305749003	9305749003	
932	Outlet Cover	9305414017	9305414017	9305414017	9305414017	
960	Diffuser	9305412013	9305412013	9305412013	9305412013	
961	Guard Clamp	9306332013	9306332013	9306332013	9306332013	
962-1	Guard Holder-L	9305753017	9305753017	9305753017	9305753017	
962-2	Guard Holder-R	9305752010	9305752010	9305752010	9305752010	
963	Fan Guard	9305751013	9305751013	9305751013	9305751013	
964	Flare Nut-A	9307767005	9307767005	313996239804	313996239804	
965	Flare Nut-B	9307768002	9307768002	9307768002	9307768002	
966	Bonnet-A	9304798019	9304798019	-----	-----	
967-1	Bonnet-B	9304799016	9304799016	9304799016	9304799016	
967-2	Bonnet-C	-----	-----	9306700010	9306700010	
968	Relay PCB Assy	9702443214	9702443214	9702443214	9702443214	
973	Gear Assy	9305452002	9305452002	9305452002	9305452002	
974	Joint (Louver)	9305416011	9305416011	9305416011	9305416011	
976	Window (Indicator)	9305440016	9305440016	9305440016	9305440016	
B	Machine Screw (with Spring Washer)	0700179013	0700179013	0700179013	0700179013	
C	Machine Screw (with Spring Washer)	301291134088	301291134088	301291134088	301291134088	

When you order parts, please make a photocopy of this page and fill the number of the parts in the "Order" column.

**OUTDOOR UNIT**

Ref. No.	Description	Part No.				Ord.
		AOH9ANGC	AOH9RSGC	AOH12ASGC	AOH12RSGC	Q'ty
4	Emblem-Rear	9306094003	9306094003	9306094003	9306094003	
5	Cabinet Front Panel, Plastic	9305525010	9305525010	9305525010	9305525010	
7	Connector Cover (Cabinet)	9306119010	9306119010	9306119010	9306119010	
9	Cabinet Rear Panel, Plastic	9305526017	9305526017	9305526017	9305526017	
12	Base Assy, Painted	9306118044	9306118020	9306118068	9306118020	
13	3-Way Valve	9306801014	9306801014	9306802011	9306802011	
14	2-Way Valve	9306800017	9306800017	9306800017	9306800017	
16	Condenser Assy	9306415006	9306477004	9307276002	9306482008	
18	Suction Pipe	9306041007	9307931000	9306358006	----	
19	Capillary Tube	9306043001	----	9308226006	----	
20	Discharge Pipe Assy	9306038007	9307035012	9306365004	9307036019	
26-6	BR Sheet 100x120xT5	----	9305039029	----	----	
26-7	BR Sheet 30x120xT7	9305039036	9305039036	9305039036	9305039036	
26-8	BR Sheet 65x170xT2	9305490011	9305490011	9305490011	----	
26-9	BR Sheet 180x180xT2	----	----	----	9305039067	
26-10	BR Sheet 100x160xT5	----	----	----	9305039074	
26-11	BR Sheet 50x190xT3	----	9300389068	----	9300389068	
32	Control Box Metal	9305972005	9305972005	9305972005	9305972005	
34	Capacitor (Fan Motor)	9700468080	9700468097	9700468110	9700468097	
37	Capacitor (Running)	9306512019	9306512019	9306512026	9306512019	
38	Clamp Metal (Capacitor)	313468061808	313468061808	313468061808	313468061808	
39	Propeller Fan	9305538003	9305538003	9305538003	9305538003	
41	Fan Motor	9307095016	9307095016	9307715013	9306402013	
42	Bracket (Motor)	9305536016	9305536016	9305536016	9305536023	
46	Compressor Assy	9308230003	9308997005	9308228000	9306496005	
47-2	Discharge Pipe Rubber (Pipe Absorber)	313185159802	----	313185159802	----	
51	Special Nut M5	9300301015	313199233602	9307091001	313199233602	
55	Special Nut M8	313252257701	313252257701	----	313252257701	
62	Wire Assy (Shield)-A	9305695027	9305971026	9305695027	9305971026	
98	Fan Ring	9305581023	9305581023	9305581023	9305581023	
107	Rubber Seat-A	9351049010	9307092008	9307092008	9351813017	
109	Terminal Cover (Comp.)	9351048013	9307090004	9307090004	9351120009	
138	Separate Wall	9305971008	9305971008	9305971008	9305971008	
155	Special Nut M6	----	----	9307615016	----	
187	Clamp No. 1219	313361271706	313361271706	313361271706	313361271706	
195	Clamp SKB-100	313361275805	313361275805	313361275805	313361275805	
196	Clamp SKB-150	313035356905	313035356905	313035356905	313035356905	
196-2	Clamp SKB-3MC	9305335008	9305335008	9305335008	9305335008	
227	OCR Spring (Comp.)	9351050016	----	----	----	
230	Overload Relay	9306096007	----	93052453007	9306466008	
300	Suction Pipe-C Assy	----	----	----	9307932007	
329	Coupling Pipe Assy	----	9306400002	----	----	
329-2	Coupling Pipe-C	----	9306433000	----	9306442002	
343	Solenoid Coil	----	9360538031	----	9360538031	
344	4-Way Valve	----	9307555015	----	9307556012	
365	Bracket (Valve)	9306748012	9306748012	9306748012	9306748012	
412	Terminal Gasket (Comp.)	9351051013	9307089008	9307089008	9351121006	
420	Capillary Assy (with Check Valve)	----	9308960009	----	9308325006	
423	Noise Insulation-F	9306097004	9306424008	9306424008	9306424008	
582	Discharge Pipe-SF	9306115005	----	9306115005	----	
620	Inlet Pipe Assy	----	----	----	9306394004	

When you order parts, please make a photocopy of this page and fill the number of the parts in the "Order" column.

**OUTDOOR UNIT (Continued)**

Ref. No.	Description	Part No.				Ord.
		AOH9ANGC	AOH9RSGC	AOH12ASGC	AOH12RSGC	Q'ty
674	Tapping Screw (Special)	9305848010	9305848010	9305848010	9305848010	
688	Screw (with Square Washer)	313681304205	313681304205	313681304205	313681304205	
765	Drain Pipe	----	9301102000	----	9301102000	
766	Drain Pipe Packing	----	9301143003	----	9301143003	
815	Terminal-2P	9306489014	----	9306489014	----	
815	Terminal-4P	----	9306488017	----	9306488017	
820	Capillary Joint-BC Assy	9306134006	----	9306134006	----	
916	Noise Insulation-G	9306098001	9306362003	9306362003	9306362003	
935-1	Reinforcement (Cabinet Top)	9305973002	9305973002	9305973002	9305973002	
935-2	Reinforcement-F (Cabinet Top)	9306123000	9306123000	9306123000	9306123000	
942-1	Control Box Cover-A Metal	9308562012	9308562012	9308562012	9308562012	
942-2	Control Box Cover-B Metal	9305975006	9305975006	9305975006	9305975006	
946	Inlet Pipe	----	9306401009	----	----	
982	Cord Clamp (Plastic, Black)	9302271002	9302271002	9302271002	9302271002	
A	Screw (with Inner Washer)	9357297002	9357297002	9357297002	9357297002	
B	Screw (with Spring Washer)	0700179013	0700179013	0700179013	0700179013	
984	U Pipe (Y) D9.52	----	----	----	9305523009	

Note : Always use specified screws, since Ref. No. 688, A, B and C are screws for the earth.

Ref. No.688 : Machine screw (with spring washer) M4 x P0.7 x L10, plating thickness 5μ or more.

A : Tapping screw (with inner clip washer) M4 x L10, plating thickness 5μ or more.

B : Machine screw (with spring washer) M4 x P0.7xL10, plating thickness 5μ or more.

C : Machine screw (with spring washer) M4 x P0.7xL8, plating thickness 5 μ or more.

When you order parts, please make a photocopy of this page and fill the number of the parts in the "Order" column.

**CONTROLLER PCB ASSEMBLY (Ref. No. 236)**

Ref. No.	Description	Part No.	Ord. Q'ty	Ref. No.	Description	Part No.	Ord. Q'ty
IC1	IC MB89625R-SH-514	1301471018		C1	Cap. Elec. 50V 10µF	0301192541	
IC2	IC NJM2904M	0100534054		C2-5,8-16, 18,19	Cap. Ceramic 25V 0.1µF	0300266748	
IC3	IC MC1413D	0101736013		C20,21	Cap. Ceramic 16V 1µF	0300316153	
IC5	IC PST600CMT	0101461120		C22	Cap. Ceramic 50V 1000pF	0300308509	
IC6	IC BR93LC46RF-E2	0100295016		BZ1	Buzzer PKM13EPY-4000-TF01	9701298013	
Q1,2, 4-6	Xstr DTC124EK	0000517034		X1	Ceramic Resonator CST8.38MTW-TF01 [ASH9ASGCW/ASH12ASGCW]	0400061021	
R1	Res. 1.5kΩ±5%	0200212784		X1	Ceramic Resonator CST8.38MTW-TF01 [ASH9RSGCW/ASH12RSGCW]	1300116019	
R2,7,33-36	Res. 22kΩ±5%	0200213095		SW1	Key Switch EVQ-PFE-04R	9700891017	
R3,9,13,26	Res. 1kΩ±5%	0200212746		JP5-8,10	Wire IPS-3043-02	1903332014	
R4	Res. 4.7kΩ±5%	0200212906		CN1	Plug, PCB B5P-SHF-1AA	0500006069	
R5,11,12,14-25,27,39,44, 46,47	Res. 10kΩ±5%	0200213019		CN2	Thermistor 150-103-86116	9702324018	
R6	Res. 33kΩ±5%	0200213132		CN3	Plug, PCB B2B-XH-AM	0500005321	
R8	Res. 1MΩ±5%	0200213491		CN4	Plug, PCB 53324-0710	0501052065	
R10	Res. 1.2kΩ±5%	0200731766		CN5	Plug, PCB 53325-1010	0501052591	
R32	Res. 100kΩ±5%	0200213255		CN7	Plug, PCB S3P-VH	0500011308	
R37	Res. 10kΩ±1%	0200279497		CN8	Plug, PCB B2B-XASK-1-A	0501045012	
R38	Res. 49.9kΩ±1%	0200279824		CN9	Plug, PCB 917072-7	0501065010	
R40	Res. 330Ω±5%	0200212623					
R41-43	Res. 1.2kΩ±5%	0200708768					
JC2-4,6-9, 11-17,JP1-3	Res. 0Ω	0200230016					

**POWER SUPPLY PCB ASSEMBLY (Ref. No. 875)**

( ) : REVERSE CYCLE MODEL

Ref. No.	Description	Part No.	Ord. Q'ty	Ref. No.	Description	Part No.	Ord. Q'ty
IC102	IC NJM7805FA	0100462081		R102	Res. Carbon 1/4W 10kΩ ±5%	0201005019	
Q101	Xstr 2SD880	0000001014		SSR101	Relay G3MB-202PL-VD	9702430016	
D101	Diode S1VB20	0000292054		HT101	Heat Sink 16 * 25	9701675012	
D102	Diode MTZJ15C	0000852203		FH101,102	Fuse Holder PFC5000-0502	0500158072	
D103-105	Diode 1SR139-400	0000353137		CN101	Plug, PCB B3P5-VH-B	0500011735	
C101,102	Cap. Ceramic 4700pF	0300209110		CN102	Plug, PCB B2P3-VH-B	0500011728	
C103,104	Cap. Plastic 250V 0.1µF	0300304075		CN103	Plug, PCB 53405-0210	0500940011	
C105	Cap. Elec. 35V 2200µF	0300331118		CN104	Plug, PCB B2B-XH-AM	0500005321	
C106	Cap. Elec. 25V 2200µF	0300327111		CN105	Plug, PCB 53406-9910	0500951048	
C107-109	Cap. Elec. 50V 10µF	0301192541		CN106	Wire w/Connector L=100	9701424016	
C110	Cap. Ceramic 0.1µF	0300988251		W101	Wire w/Terminal L=210	9701660018	
SW101	Slide Switch 8SS1012-1	9701426010		(W102)	Wire w/Terminal L=240 BLU	9701802012	
VA101	Varistor ERZ-V10V471CS	0000515139		W103	Wire w/Terminal L=225 BLK	9701657018	
VA102	Arrester CP2470-F	9701835010		W104	Wire w/Terminal L=150 BRN	9701658015	
F101	Fuse BET 3.15A - 250V	0600222512		(W105)	Wire w/Terminal L=240 RED	9701802029	
L101	Line Filter ELF15N015A	0400165118		JM101, 104	Wire 0.6 mm dia. L=10 mm	9700025016	
(K101, 102)	Relay G5N-1A	9701566013		JM102	Wire Assembly IPS-1041-2	9700035015	
(CR101, 102)	CR Absorber RPEL-121204-C	9701125012		JM103	Wire 0.6 mm dia. L=7.5 mm	9701076017	
R101	Res. Carbon 1/4W 1kΩ ±5%	0201038758					

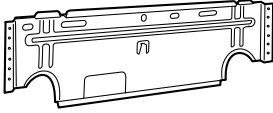




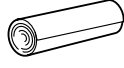





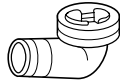
**INDICATOR PCB ASSEMBLY (Ref. No.385)**

Ref. No.	Description	Part No.	Ord. Q'ty
D201	Diode SLR-325VC RED	0000813259	
D202	Diode SLR-325MC GRN	0000813242	
D203	Diode SLR-325DC ORG	0000813235	
C201	Cap. Ceramic 0.1µF	0300988251	
C202	Cap. Elec. 25V 10µF	0300504413	
X201	Remote Control Amplifier SBX1810-22	0101525129	
CN201	Wire w/Connector L=230 Lamp Cover	9701397013 9305451012	

**RELAY PCB ASSEMBLY (Ref. No.968)**

Ref. No.	Description	Part No.	Ord. Q'ty
D301	Diode 1SR139-400	0000353137	
K301	Relay G4A-1A-PS	9701024018	
CN301	Wire w/Connector L=140	9701279012	

# STANDARD ACCESSORIES

Name and Shape	Part No.			
	ASH9ASGCW	ASH9RSGCW	ASH12ASGCW	ASH12RSGCW
Wall hook bracket 	930458008	930458008	930458008	930458008
Wall cap-B 	313714296205	313714296205	313714296205	313714296205
Remote control unit 	9307113048	9307113055	9307113048	9307113055
Remote control holder case 	9305642014	9305642014	9305642014	9305642014
Battery (penlight) 	0600185534	0600185534	0600185534	0600185534
Cloth tape 	9308117007	9308117007	9308117007	9308117007
Seal-A 	—	—	9304536000	9304536000
Cable mark 	—	9301385007	—	9301385007
Tapping screw (big) (ø4 x 20) 	301141164200	301141164200	301141164200	301141164200
Tapping screw (small) (ø3 x 12) 	301141533125	301141533125	301141533125	301141533125
Hexagon wrench 	9351228019	9351228019	9351228019	9351228019
Drain pipe (Including drain packing) 	—	9303029015	—	9303029015

