



SPLIT TYPE ROOM AIR CONDITIONER

WALL MOUNTED type

SERVICE MANUAL

Models

Indoor unit

ASH7ASC-W
ASH7RSC-W
ASH7ASCCW
ASH7RSCCW

Outdoor unit

AOH7ASC
AOH7RSC
AOH7ASCC
AOH7RSCC

CONTENTS

SPECIFICATIONS	1
OUTLINE AND DIMENSIONS	2
REFRIGERANT SYSTEM DIAGRAM	3
CIRCUIT DIAGRAM	4
INDOOR PCB CIRCUIT DIAGRAM	6
DISASSEMBLY ILLUSTRATION	8
PARTS LIST	12
STANDARD ACCESSORIES	14

SPECIFICATIONS

TYPE	COOL		COOLING & HEATING	
INDOOR UNIT	ASH7ASC-W	ASH7ASCCW	ASH7RSC-W	ASH7RSCCW
OUTDOOR UNIT	AOH7ASC	AOH7ASCC	AOH7RSC	AOH7RSCC
COOLING CAPACITY (kW)	1.95 - 1.95		2.05 - 2.05	
HEATING CAPACITY (kW)	----		2.30 - 2.30	

ELECTRICAL DATA

POWER SOURCE (V)	220 - 240		
FREQUENCY (Hz)	50		
RUNNING CURRENT (A)	COOL	2.8 - 2.9	3.3 - 3.3
	HEAT	---	3.1 - 3.1
INPUT WATTS (kW)	COOL	0.590 - 0.635	0.70 - 0.73
	HEAT	---	0.65 - 0.69
E.E.R. (kW/kW)	COOL	3.31 - 3.07	2.93 - 2.81
	HEAT	---	3.54 - 3.33
MOISTURE REMOVAL (ℓ/h)	0.7		0.8
AIR CIRCULATION-Hi (m ³ /hr)	340		COOL 350 HEAT 380

COMPRESSOR

TYPE	Hermetic type, Permanent split condenser, 2 pole, Single phase, Induction motor		
DISCRIMINATION	80662745E		80679045Z, 80679045N
POWER SOURCE	220 - 240V / 50Hz		220 - 240V / 50Hz
REFRIGERANT R410A (g)	650		580

FAN MOTOR

POWER SUPPLY (V)	220 - 240		220 - 240
INDOOR UNIT (r.p.m.)	HI-SPEED	1,180 - 1,180	COOL 1,220 - 1,220 HEAT 1,310 - 1,310
	MED-SPEED	1,100 - 1,100	COOL 1,120 - 1,120 HEAT 1,210 - 1,210
	LO-SPEED	1,030 - 1,030	COOL 1,030 - 1,030 HEAT 1,090 - 1,090
	QUIET	940 - 940	COOL 940 - 940 HEAT 970 - 970
OUTDOOR UNIT (r.p.m.)	760 - 795		COOL 760 - 795 HEAT 760 - 795

DIMENSIONS

INDOOR UNIT H x W x D (mm)	248 x 808 x 163	248 x 808 x 163
OUTDOOR UNIT H x W x D (mm)	535 x 650 x 250	535 x 650 x 250

WEIGHT

INDOOR UNIT GROSS / NET (kg)	10 / 7.5	10 / 7.5
OUTDOOR UNIT GROSS / NET (kg)	27 / 24	28 / 25

NOISE LEVEL

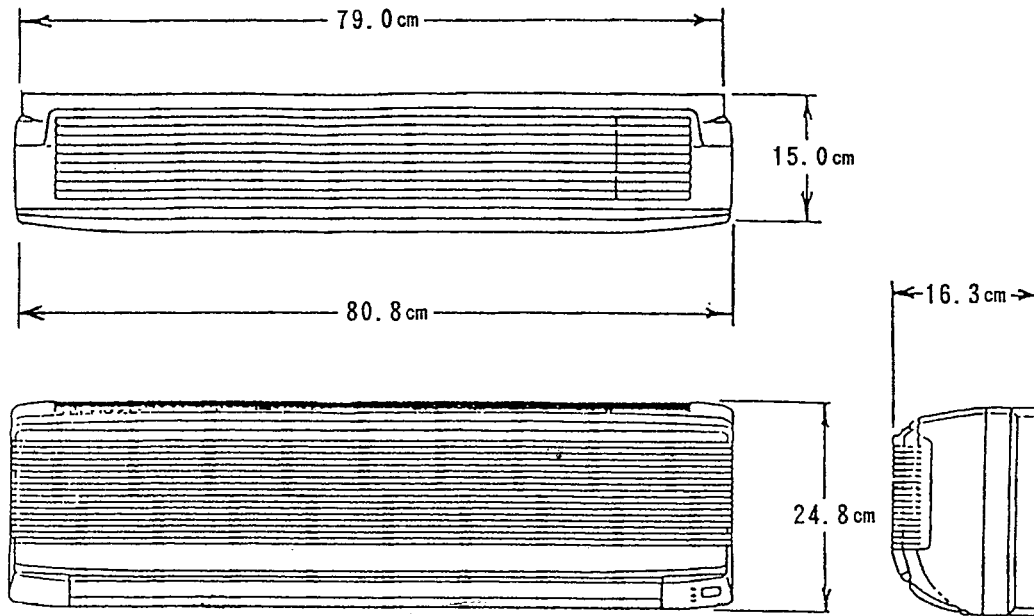
INDOOR UNIT (dB)	HI-SPEED	37 - 37	COOL 37 - 37 HEAT 39 - 39
	MED-SPEED	35 - 35	COOL 35 - 35 HEAT 37 - 37
	LO-SPEED	33 - 33	COOL 33 - 33 HEAT 34 - 34
	SUPER QUIET	31 - 31	COOL 31 - 31 HEAT 31 - 31
OUTDOOR UNIT (dB)	42 - 43		COOL 43 - 44 HEAT 45 - 46

REFRIGERANT CHARGE (R-22)

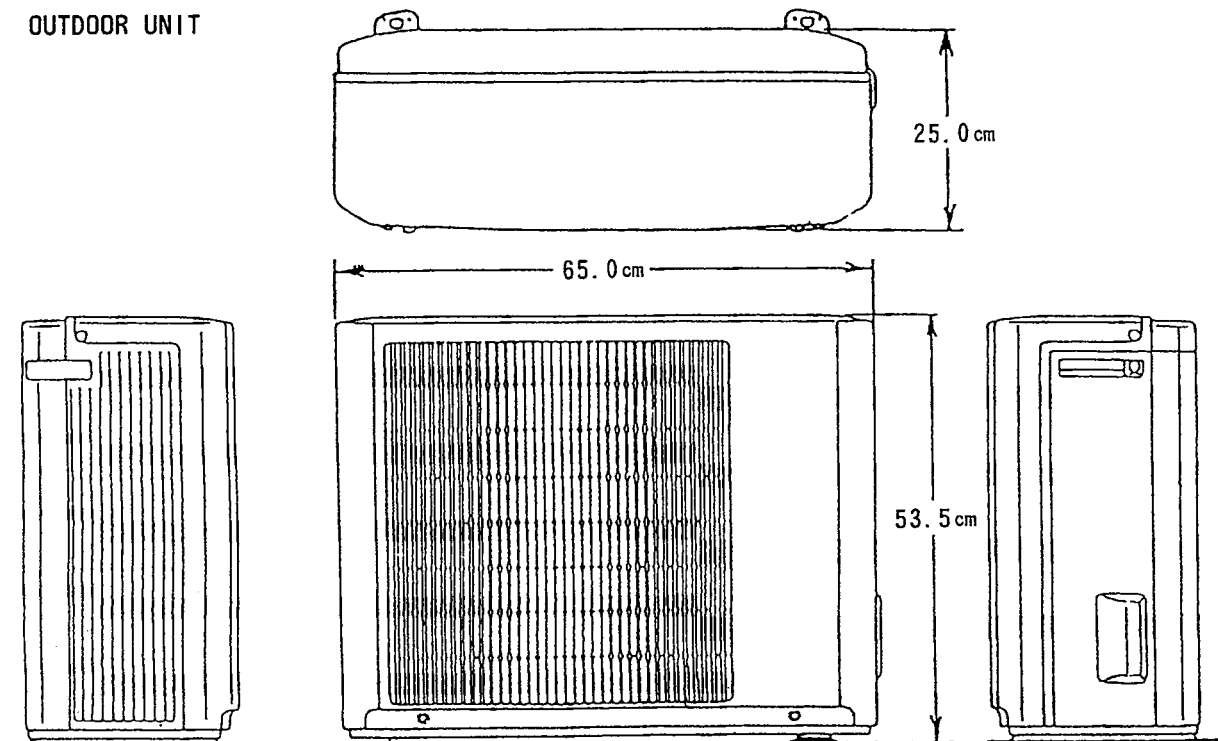
FULL CHARGE AMOUNT (g)	Pipe length 5 m	650	580
	7 m	682	612
	10 m	730	660
ADDITIONAL REFRIGERANT		16 g / m	16 g / m

DIMENSIONS

INDOOR UNIT

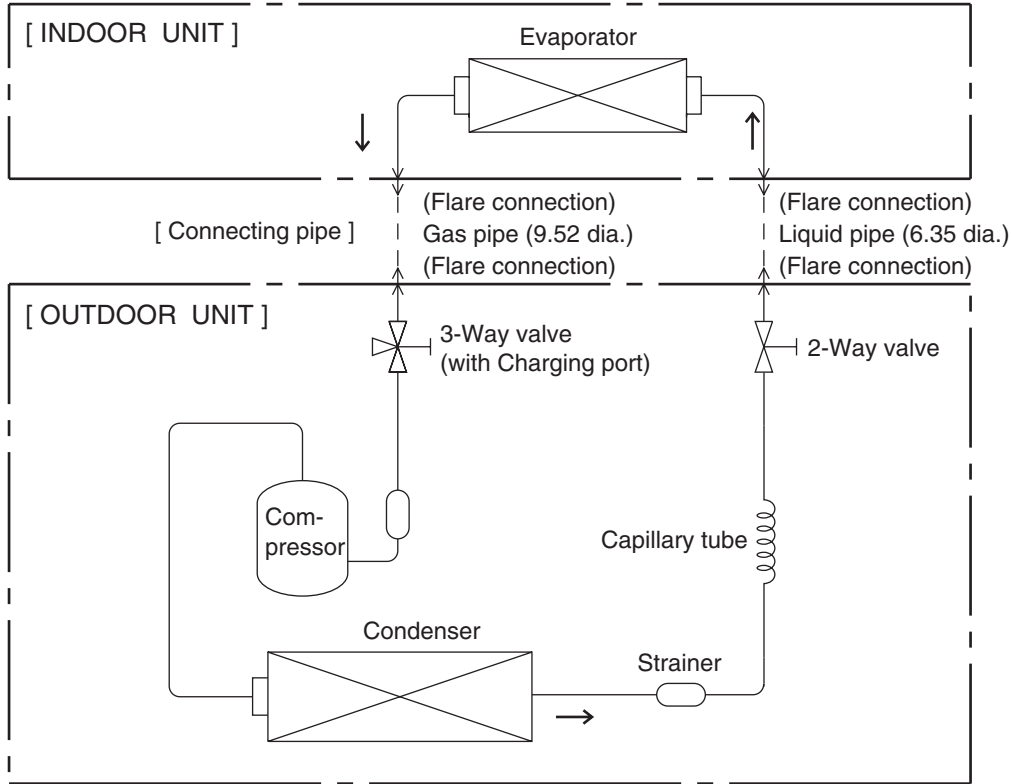


OUTDOOR UNIT

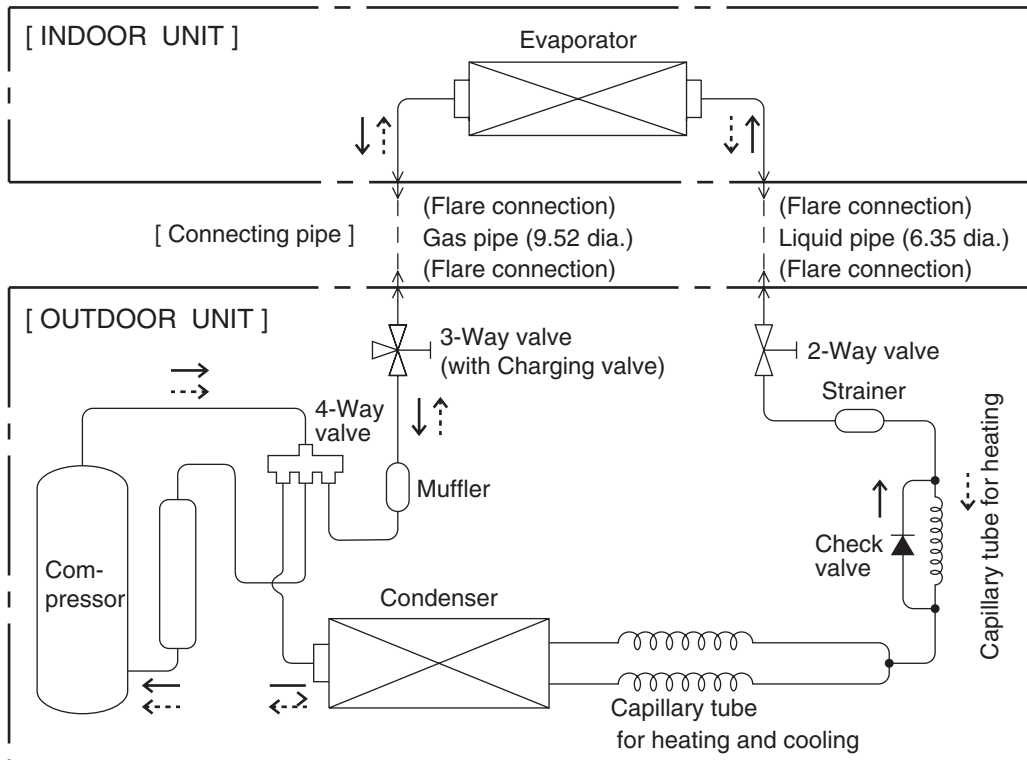


REFRIGERANT SYSTEM DIAGRAM

Models : ASH7ASC-W / AOH7ASC
ASH7ASCCW / AOH7ASCCW



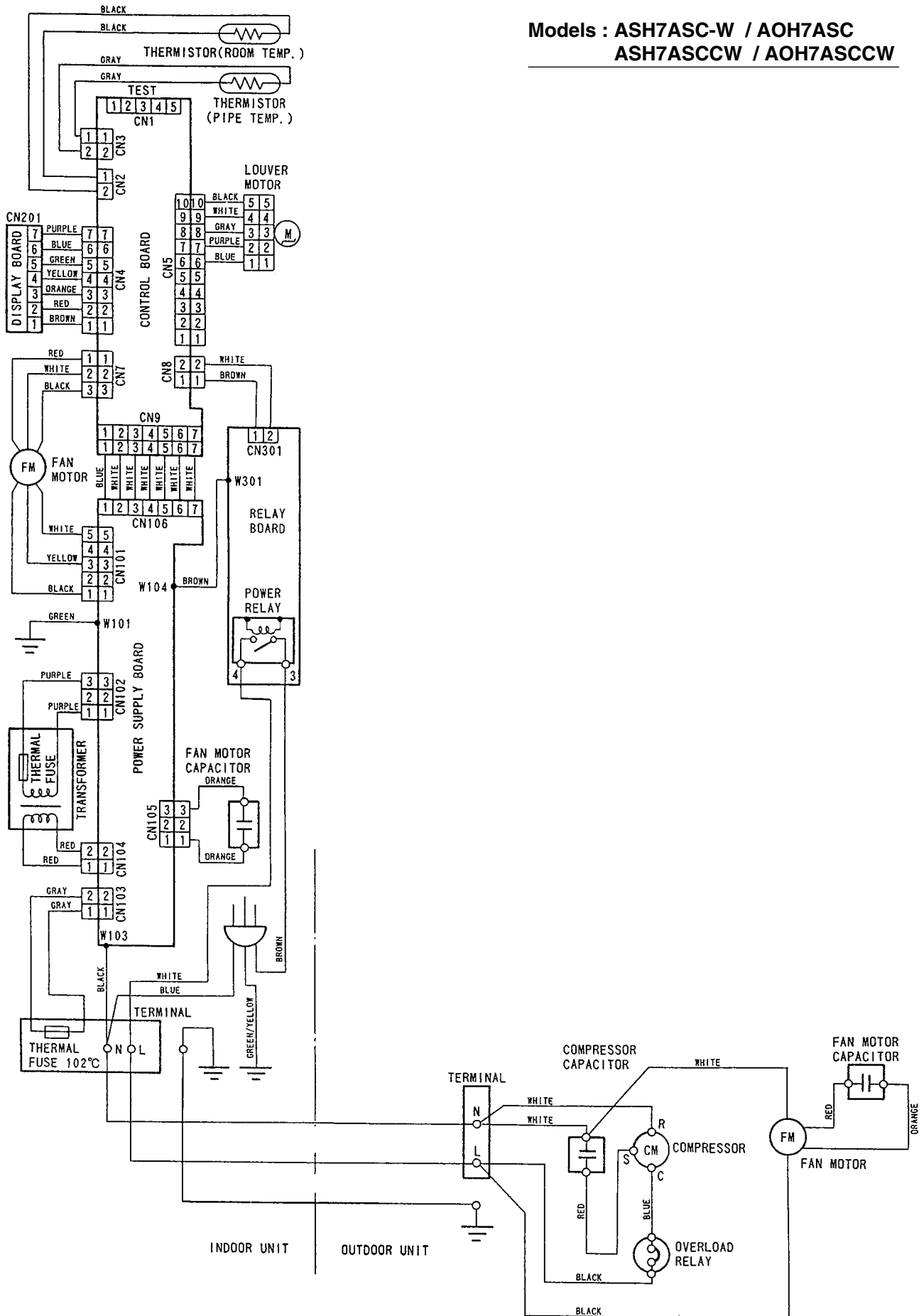
Models : ASH7RSC-W / AOH7RSC
ASH7RSCCW / AOH7RSCCW



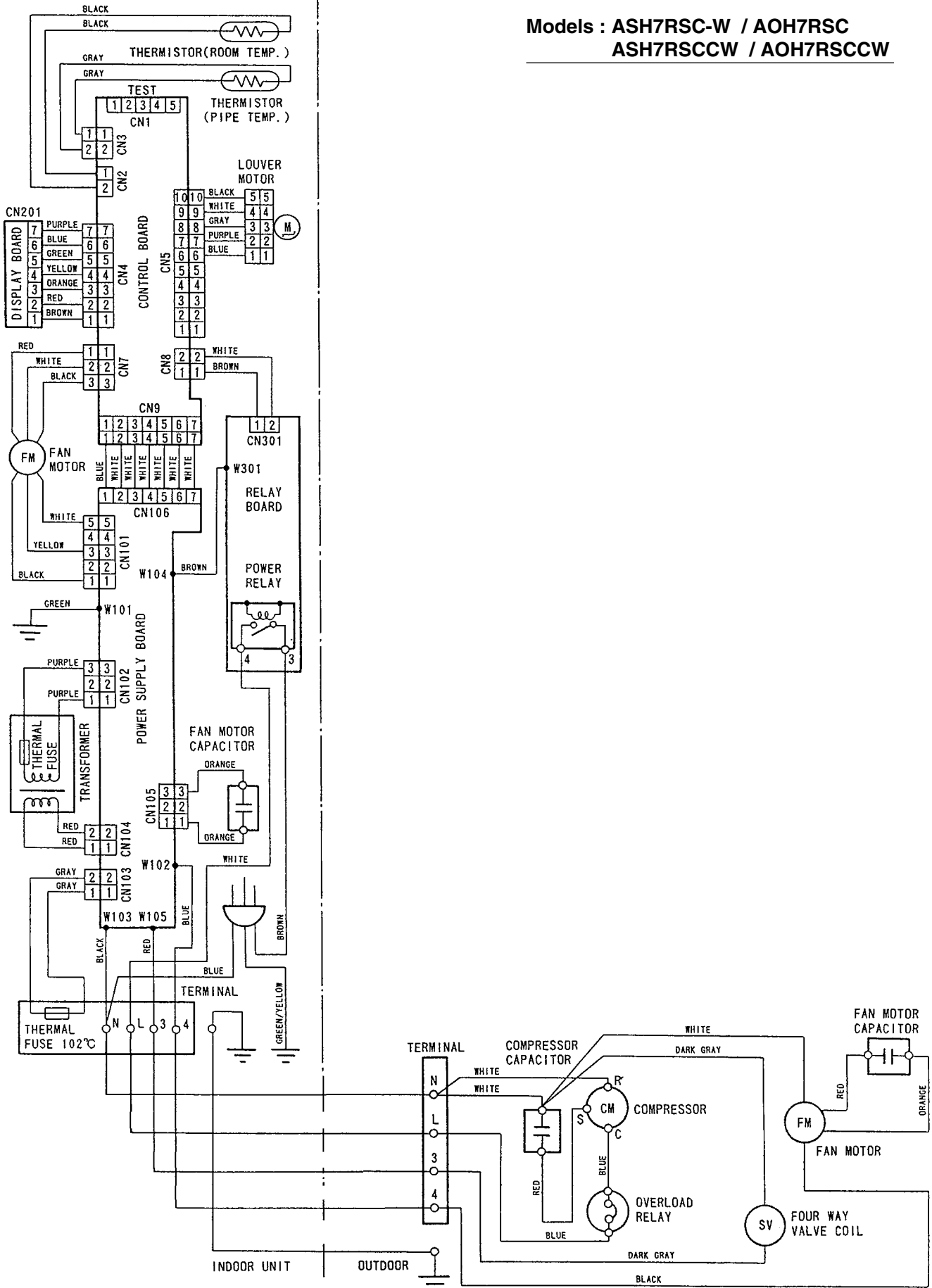
Cooling →
Heating ···→

CIRCUIT DIAGRAM

Models : ASH7ASC-W / AOH7ASC
ASH7ASCCW / AOH7ASCCW

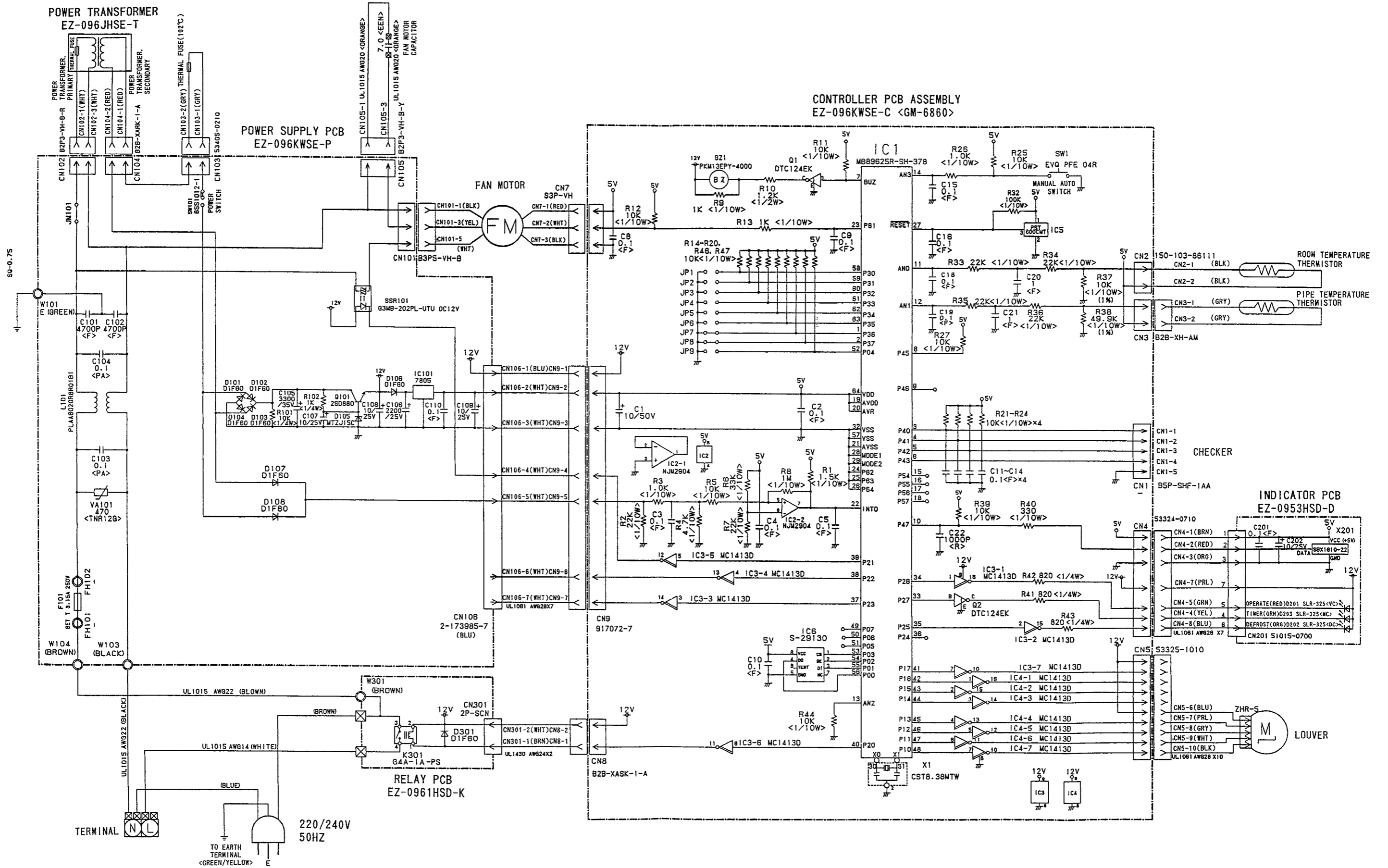


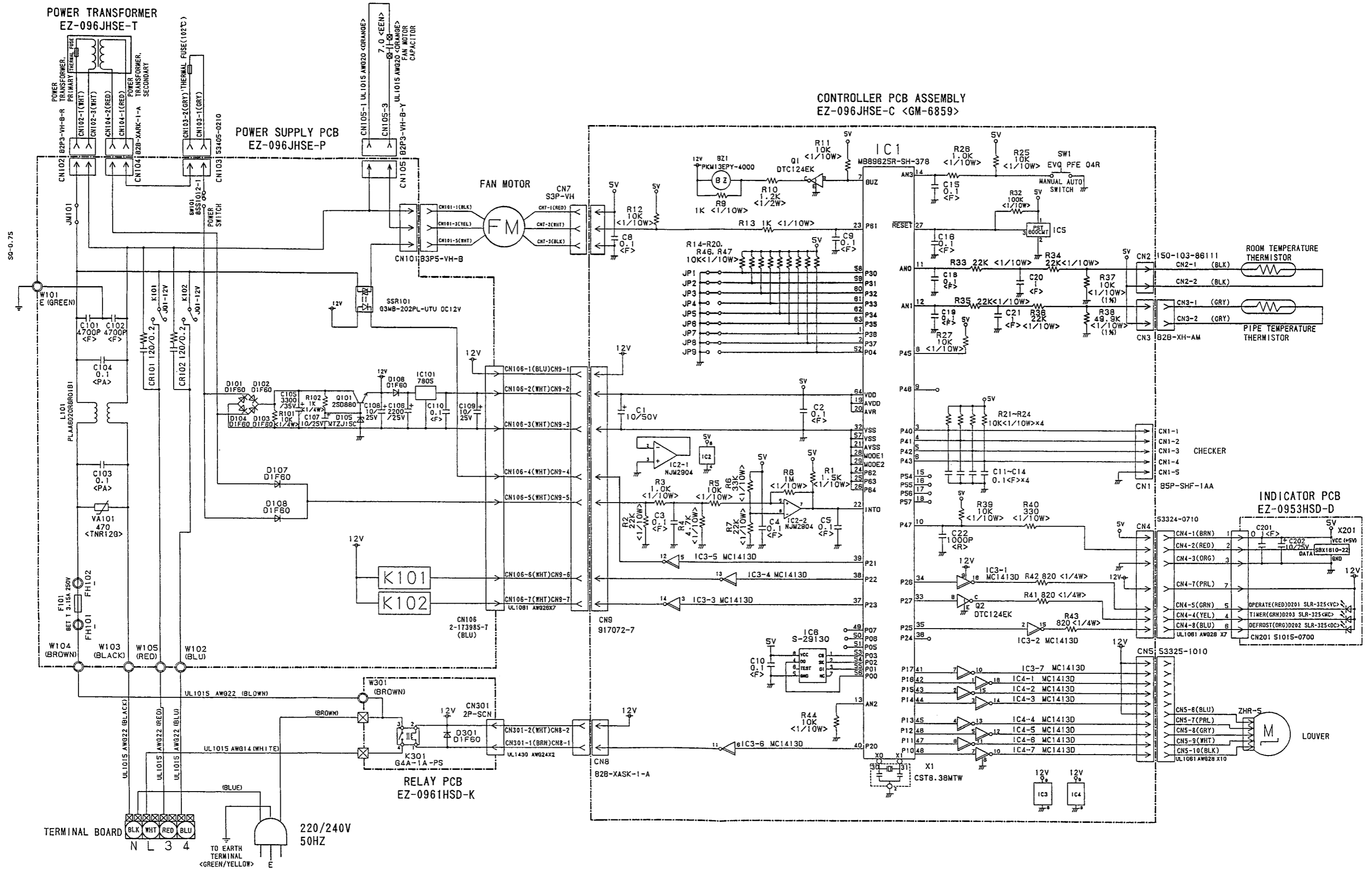
Models : ASH7RSC-W / AOH7RSC
 ASH7RSCCW / AOH7RSCCW



INDOOR PCB CIRCUIT DIAGRAM

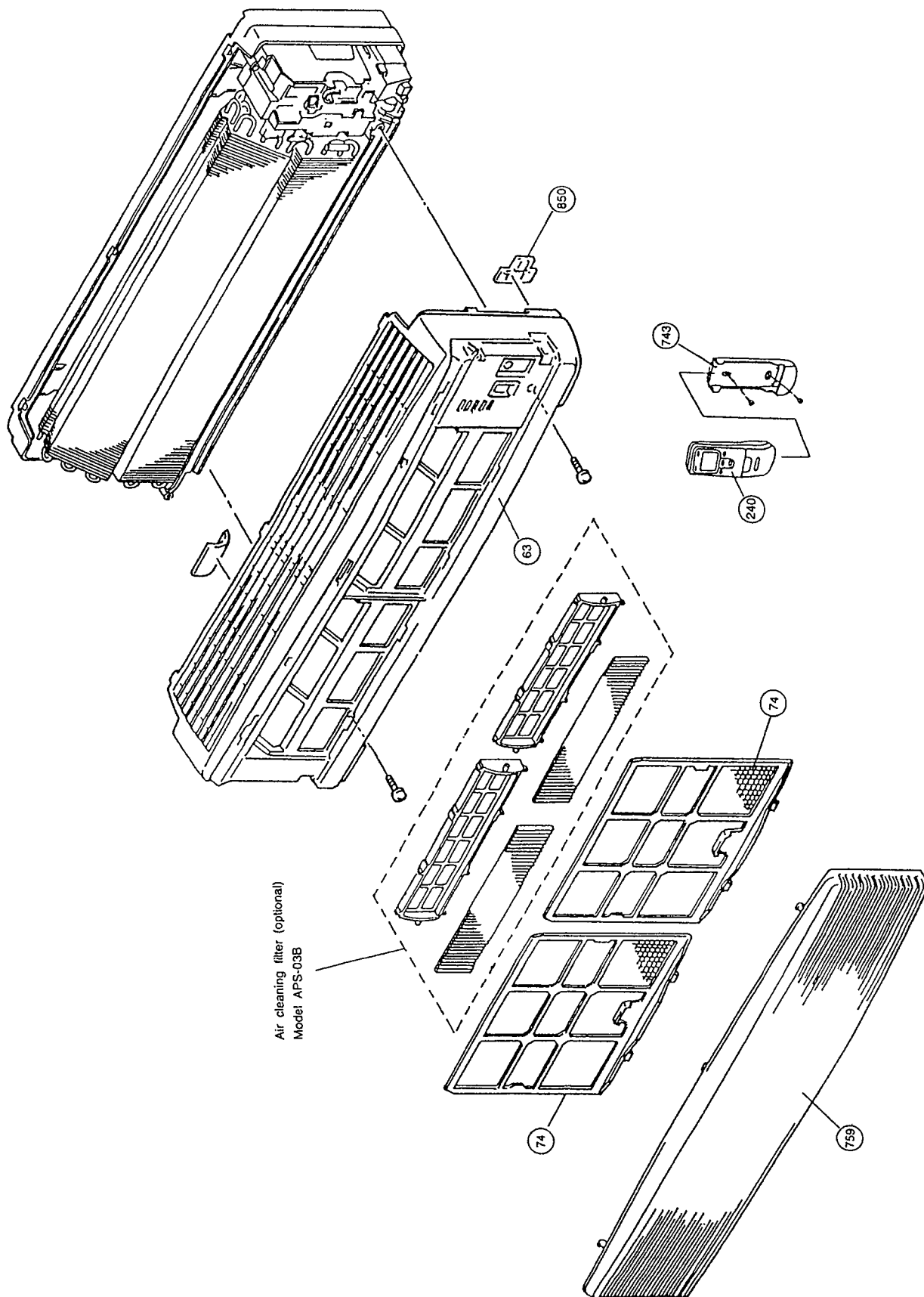
Models : ASH7ASC-W
ASH7ASCCW



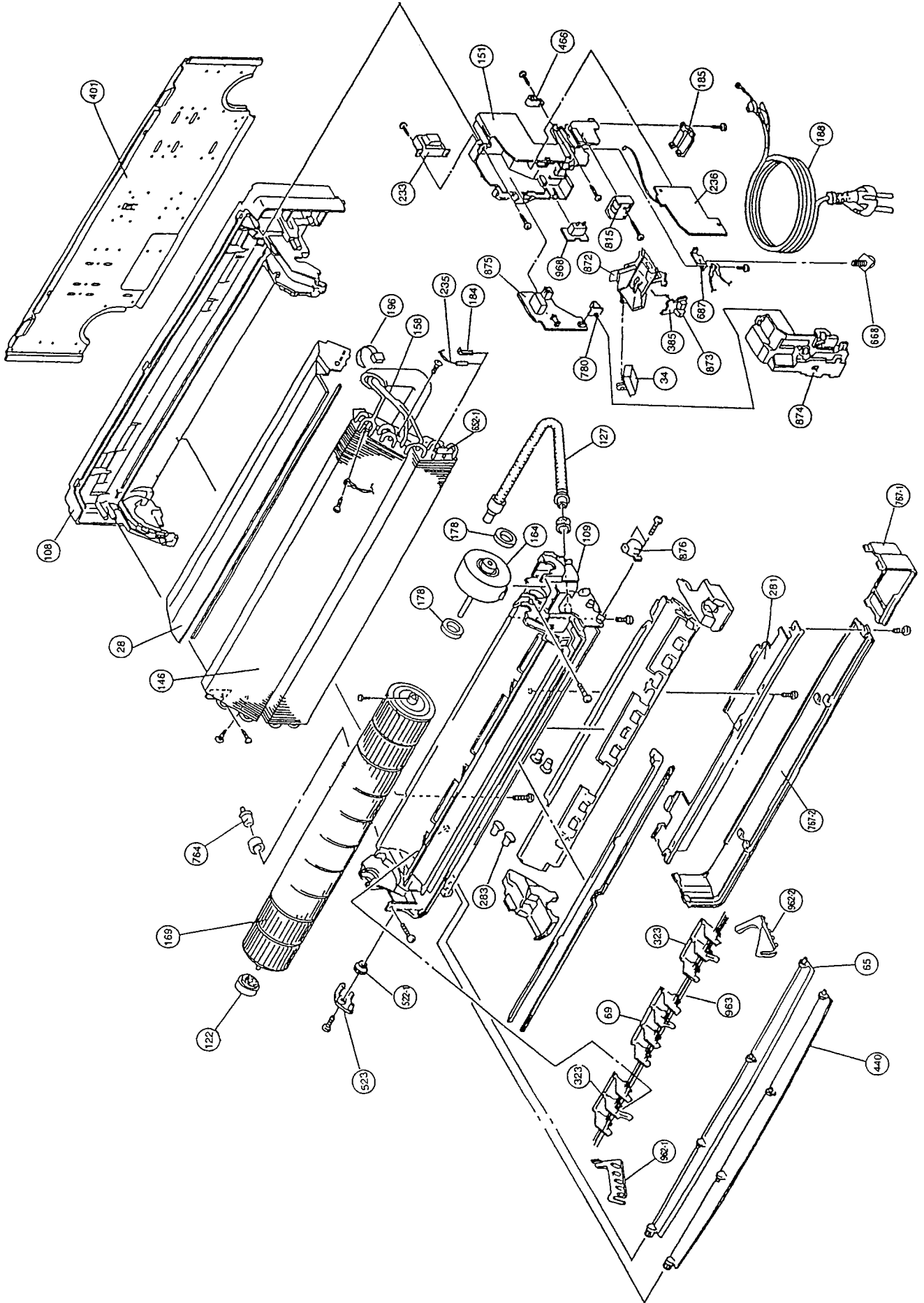


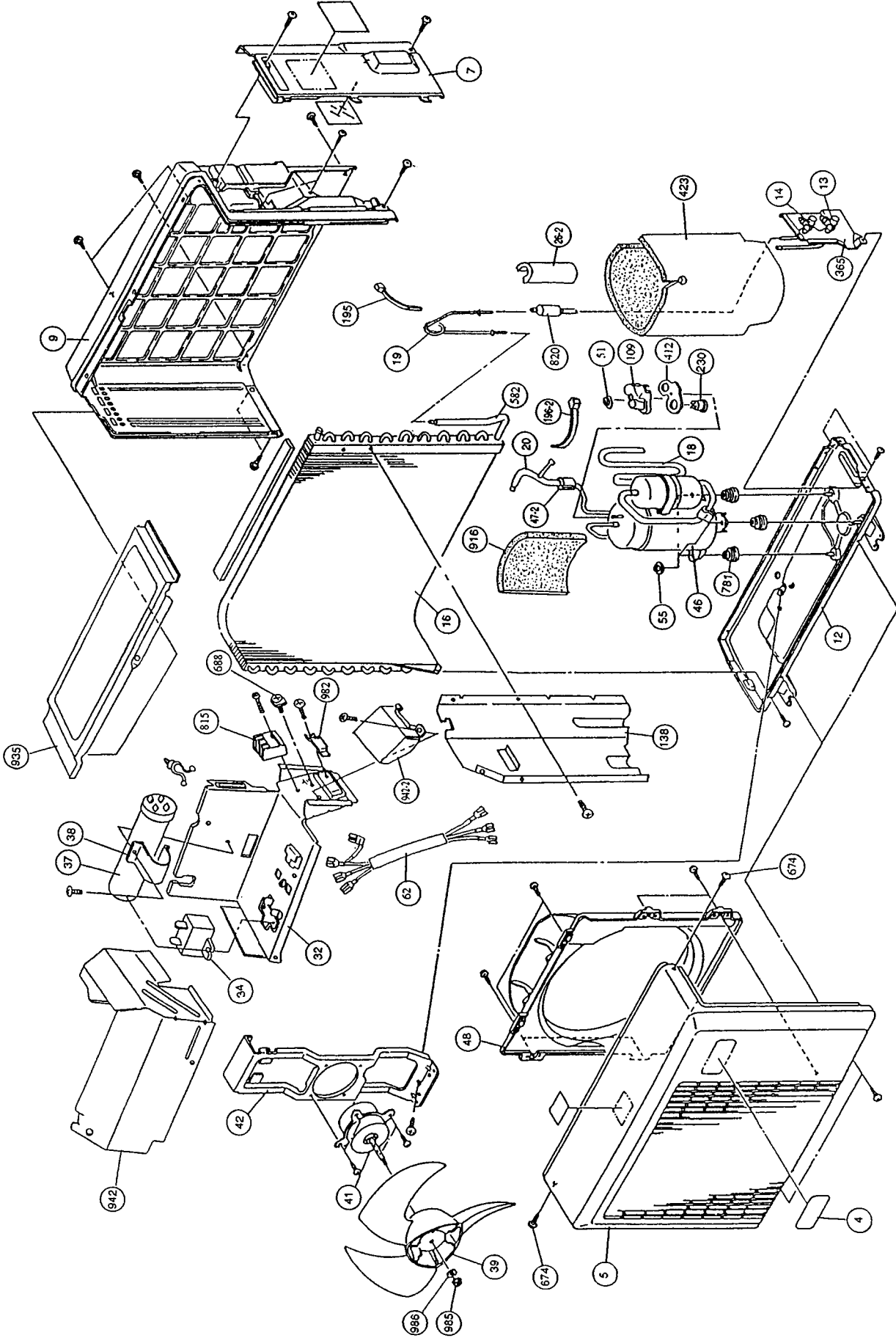
DISASSEMBLY ILLUSTRATION

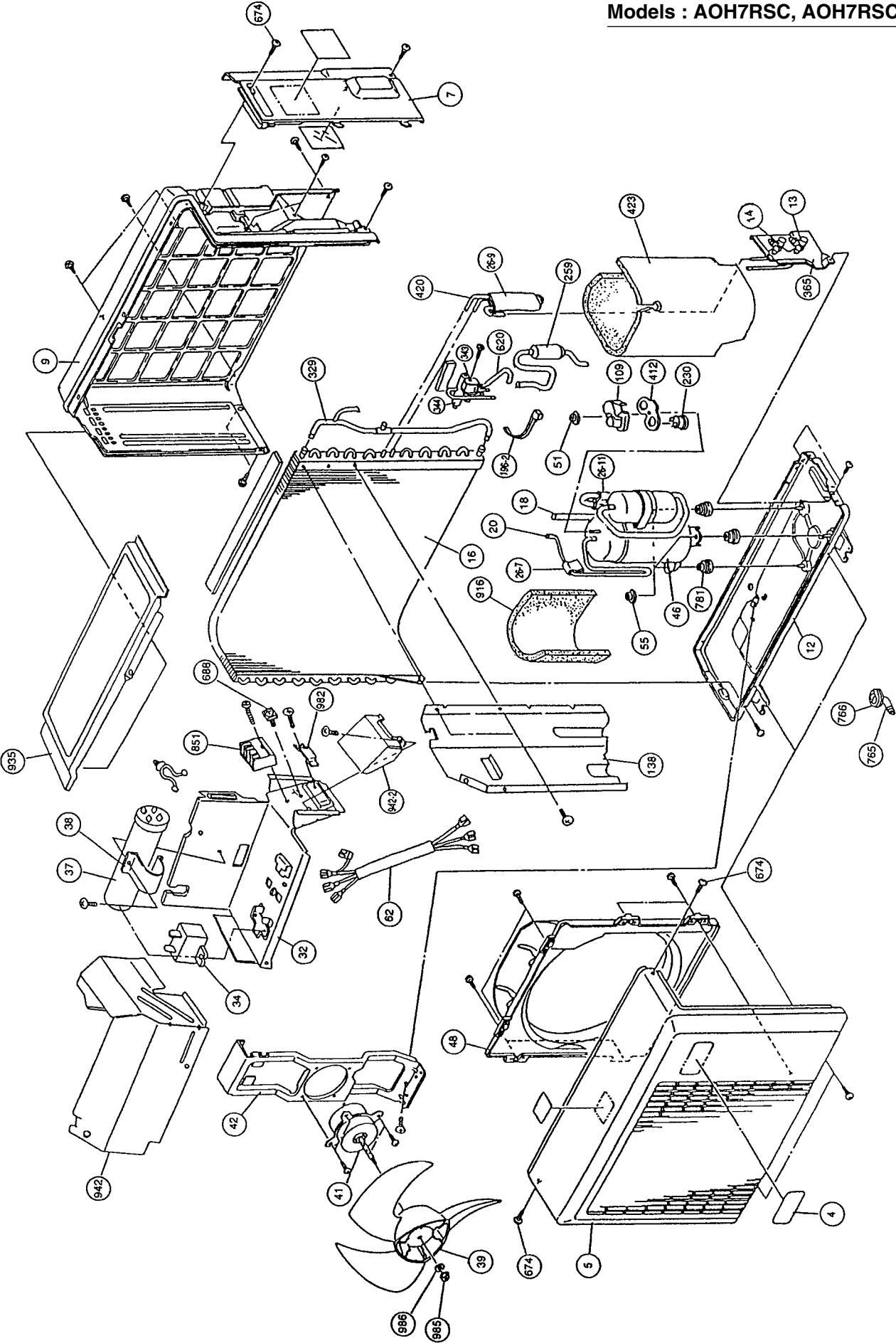
Models : ASH7ASC-W, ASH7ASCCW
ASH7RSC-W, ASH7RSCCW



Models : ASH7ASC-W, ASH7ASCCW
ASH7RSC-W, ASH7RSCCW







PARTS LIST

INDOOR UNIT

Ref. No.	Description	Part No.		Ord. Q' ty	Ref. No.	Description	Part No.		Ord. Q' ty
		ASH7ASC-W	ASH7RSC-W				ASH7ASCCW	ASH7RSCCW	
28	Blower Cover	9306462000	9306462000		28	Blower Cover	9306462000	9306462000	
34	Capacitor (Fan Motor)	9702105020	9702105020		34	Capacitor (Fan Motor)	9702105020	9702105020	
63	Front Panel Assy	9306268077	9306268077		63	Front Panel Assy	9306268077	9306268077	
65	Flow Control Panel-Z	9306058012	9306058012		65	Flow Control Panel-Z	9306058012	9306058012	
69	Louver-A	9306055028	9306055028		69	Louver-A	9306055028	9306055028	
74	Filter	9305444014	9305444014		74	Filter	9305444014	9305444014	
108	Base	9305427017	9305427017		108	Base	9305427017	9305427017	
109	Casing	9306052027	9306052027		109	Casing	9306052027	9306052027	
122	Shaft Holder-B	9303066010	9303066010		122	Shaft Holder-B	9303066010	9303066010	
127	Drain Hose Assy	9305550029	9305550029		127	Drain Hose Assy	9305550029	9305550029	
146	Evaporator Assy	9306904005	9306742003		146	Evaporator Assy	9306904005	9306742003	
151	Control Box	9305448029	9305448029		151	Control Box	9306763015	9306763015	
158	Connecting Pipe Assy	9306699000	9306699000		158	Connecting Pipe Assy	9306699000	9306699000	
164	Fan Motor Assy-IN	9304631118	9304631118		164	Fan Motor Assy-IN	9306448011	9306448011	
169	Cross-Flow Fan Assy	9305435012	9305435012		169	Cross-Flow Fan Assy	9305435012	9305435012	
178	Motor Cushion-A	9303528006	9303528006		178	Motor Cushion-B	9306274009	9306274009	
184	Thermistor Spring	313104262701	313104262701		184	Thermistor Spring	313104262701	313104262701	
185	Wire Clamp	9304343004	9304343004		185	Wire Clamp	9305940004	9305940004	
188	Power Cord Assy	9701758012	9701758012		188	Power Cord Assy	9701758012	9701758012	
196	Clamp SKB-150	313035356905	313035356905		196	Clamp SKB-150	313035356905	313035356905	
233	Power Transformer	9702015015	9702015015		233	Power Transformer	9702015015	9702015015	
235	Thermistor Assy-Pipe	9701102013	9701102013		235	Thermistor Assy-Pipe	9701102013	9701102013	
236	Controller PCB Assy	9701999019	9701998012		236	Controller PCB Assy	9701999019	9701998012	
240	Remote Control Unit	9306049010	9306049027		240	Remote Control Unit	9306049010	9306049027	
281	Clamp Metal (Pipe)	9306063009	9306063009		281	Clamp Metal (Pipe)	9306063009	9306063009	
283	Bushing-A	9303529010	9303529010		283	Bushing-A	9303529010	9303529010	
323	Louver-B	9306056025	9306056025		323	Louver-B	9306056025	9306056025	
385	Indicator PCB Assy	9701700011	9701700011		385	Indicator PCB Assy	9701700011	9701700011	
401	Wall Hook Bracket	9304358008	9304358008		401	Wall Hook Bracket	9304358008	9304358008	
440	Flow Control Panel-U	9306057015	9306057015		440	Flow Control Panel-U	9306057015	9306057015	
466	Clamp NK-4N	313714328805	313714328805		466	Clamp NK-4N	313714328805	313714328805	
522-1	Gear-A	9306062002	9306062002		522-1	Gear-A	9306062002	9306062002	
523	Gear Bracket	9306407001	9306407001		523	Gear Bracket	9306407001	9306407001	
652-1	Thermistor Holder Pipe	313714262805	313714262805		652-1	Thermistor Holder Pipe	313714262805	313714262805	
668	Screw w/Washer	313681304205	313681304205		668	Screw w/Washer	313681304205	313681304205	
687	Earth Terminal	9306483005	9306483005		687	Earth Terminal	9306483005	9306483005	
743	Remote Cont. Holder Case	9305642014	9305642014		743	Remote Cont. Holder Case	9305642014	9305642014	
759	Intake Grille	9306051013	9306051013		759	Intake Grille	9306051013	9306051013	
764	Drain Cap Assy	9304150008	9304150008		764	Drain Cap Assy	9304150008	9304150008	
767-1	Bottom Cover-A	9306053017	9306053017		767-1	Bottom Cover-A	9306053017	9306053017	
767-2	Bottom Cover-B	9306054014	9306054014		767-2	Bottom Cover-B	9306054014	9306054014	
780	Key Top (Slide Switch)	9303526002	9303526002		780	Key Top (Slide Switch)	9303526002	9303526002	
815	Terminal	9701955022	9701955039		815	Terminal	9701955022	9701955039	
850	Window (Receiver)	9306059019	9306059019		850	Window (Receiver)	9306059019	9306059019	
872	Indicator Case	9306061005	9306061005		872	Indicator Case	9306061005	9306061005	
873	Lamp Cover	9306060008	9306060008		873	Lamp Cover	9306060008	9306060008	
874	Control Box Cover	9305977017	9305977017		874	Control Box Cover	9305977017	9305977017	
875	Power Supply PCB Assy	9702001018	9702000011		875	Power Supply PCB Assy	9702001018	9702000011	
876	Step Motor	9305892006	9305892006		876	Step Motor	9305892006	9305892006	
962-1	Guard Holder-L	9306678012	9306678012		962-1	Guard Holder-L	9306678012	9306678012	
962-2	Guard Holder-R	9306677015	9306677015		962-2	Guard Holder-R	9306677015	9306677015	
963	Fan Guard	9305751013	9305751013		963	Fan Guard	9305751013	9305751013	
968	Relay PCB Assy	9701920013	9701920013		968	Relay PCB Assy	9701920013	9701920013	

When you order parts, please make a photocopy of this page and fill the number of the parts in the "Order" column.

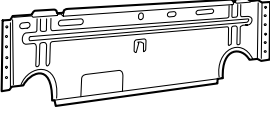
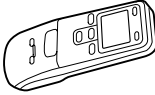




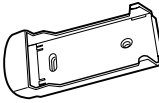
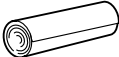

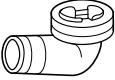
OUTDOOR UNIT

When you order parts, please make a photocopy of this page and fill the number of the parts in the "Order" column.

Ref. No.	Description	Part No.		Ord. Q'ty
		A0H7ASC	A0H7RSC	
4	Emblem-Rear	9306094003	9306094003	
5	Cabinet Front Panel, Plastic	9306016012	9306016012	
7	Connector Cover	9306018016	9306018016	
9	Cabinet Rear Panel, Plastic	9306017019	9306017019	
12	Base Assy, Painted	9304806042	9304806042	
13	3-Way Valve	9306252007	9306252007	
14	2-Way Valve	9306251000	9306251000	
16	Condenser Assy	9306743000	9306744007	
18	Suction Pipe	9306781019	9306774011	
19	Capillary Tube	9306940010	-	
20	Discharge Pipe	-	9306771010	
20	Discharge Pipe Assy	9306779016	-	
26-6	BR Sheet 120x100xT5	9305039029	-	
26-7	BR Sheet 30x120xT7	9305039036	9305039036	
26-9	BR Sheet 180x180xT2	-	9305039067	
26-11	BR Sheet 50x190xT3	-	9300389068	
32	Control Box Metal	9306475024	9306475024	
34	Capacitor (Fan Motor)	9700467038	9700467038	
37	Capacitor (Running)	9351578053	9351208011	
38	Clamp Metal (Capacitor)	313468061808	313468061808	
39	Propeller Fan	9306565015	9306565015	
41	Fan Motor Assy-Out	9600164150	9600164150	
42	Bracket (Motor)	9306021016	9306021016	
46	Compressor Assy	9305685004	9305684007	
47-2	Rubber (Discharge Pipe)	313185159802	-	
48	Fan Ring	9306019013	9306019013	
51	Special Nut M5	313199233602	313199233602	
55	Special Nut M8	313252257701	313252257701	
62	Wire Assy(Shield)-A	9305695027	9305791026	
109	Terminal Cover	9302419008	9302419008	
138	Separate Wall Metal	9306474003	9306474003	
195	Clamp SKB-100	313361275805	313361275805	
196-2	Clamp SKB-3MC	9305335008	9305335008	
230	Overload Relay	9351537012	9351506018	
259	Muffler-A D28.58	-	9305865000	
329	Coupling Pipe Assy	-	9306775018	
343	Solenoid Coil	-	9305784011	
344	4-Way Valve	-	313947302811	
365	Bracket (Valve)	9306020026	9306020026	
412	Terminal Gasket (For Comp.)	9351505011	9351505011	
420	Capillary Assy	-	9306671006	
423	Noise Insulation-F	9306937010	9306937010	
582	Discharge Pipe-SF	9306115005	-	
620	Inlet Pipe	-	9306783013	
674	Screw, Coating SUS410T+5014	9305848010	9305848010	
	Screw, Tapping SUS410T+4014	9306379001	9306379001	
A	Screw (For Earth)	9357297002	9357297002	
688	Screw w/Washer	313681304205	313681304205	
765	Drain Pipe (L-type)	-	9301102000	
766	Drain Pipe Packing	-	9301143003	
781	Rubber Cushion	9300293013	9300293013	
815	Terminal-2P	9306489014	-	
815	Terminal-4P	-	9306488017	
820	Joint Pipe (Capillary)	9305680009	-	
916	Noise Insulation-G	9305910007	9306098001	
935	Reinforcement Plate	9306473006	9306473006	
942	Control Box Cover Metal	9306476007	9306476007	
942-2	Cont. Box Cover-B Metal	9305975006	9305975006	
982	Cord Clamp, Plastic	9302271002	9302271002	
985	Special Nut w/Washer	9304902003	9304902003	
986	Special Washer	9304903000	9304903000	

Ref. No.	Description	Part No.		Ord. Q'ty
		A0H7ASCC	A0H7RSCC	
4	Emblem-Rear	9306094003	9306094003	
5	Cabinet Front Panel, Plastic	9306016012	9306016012	
7	Connector Cover	9306018016	9306018016	
9	Cabinet Rear Panel, Plastic	9306017019	9306017019	
12	Base Assy, Painted	9304806042	9304806042	
13	3-Way Valve	9307065019	9307065019	
14	2-Way Valve	9307064012	9307064012	
16	Condenser Assy	9306972004	9306971007	
18	Suction Pipe	9306781019	9306774011	
19	Capillary Tube	9306940010	-	
20	Discharge Pipe	-	9306771010	
20	Discharge Pipe Assy	9306779016	-	
26-6	BR Sheet 120x100xT5	9305039029	-	
26-7	BR Sheet 30x120xT7	9305039036	9305039036	
26-9	BR Sheet 180x180xT2	-	9305039067	
26-11	BR Sheet 50x190xT3	-	9300389068	
32	Control Box Metal	9306475024	9306475024	
34	Capacitor (Fan Motor)	9306759018	9306759018	
37	Capacitor (Running)	9306512033	9306512033	
38	Clamp Metal (Capacitor)	313468061808	313468061808	
39	Propeller Fan	9306565015	9306565015	
41	Fan Motor Assy-Out	9307111013	9307111013	
42	Bracket (Motor)	9306021016	9306021016	
46	Compressor Assy	9307009006	9307008009	
47-2	Rubber (Discharge Pipe)	313185159802	-	
48	Fan Ring	9306019013	9306019013	
51	Special Nut M5	313199233602	313199233602	
55	Special Nut M8	313252257701	313252257701	
62	Wire Assy(Shield)-A	9305695027	9305791026	
109	Terminal Cover	9302419008	9302419008	
138	Separate Wall Metal	9306474003	9306474003	
195	Clamp SKB-100	313361275805	313361275805	
196-2	Clamp SKB-3MC	9305335008	9305335008	
230	Overload Relay	9351537012	9351506018	
259	Muffler-A D28.58	-	9305865000	
329	Coupling Pipe Assy	-	9306775018	
343	Solenoid Coil	-	9305784011	
344	4-Way Valve	-	313947302811	
365	Bracket (Valve)	9306020026	9306020026	
412	Terminal Gasket (For Comp.)	9351505011	9351505011	
420	Capillary Assy	-	9306671006	
423	Noise Insulation-F	9306937010	9306937010	
582	Discharge Pipe-SF	9306115005	-	
620	Inlet Pipe	-	9306783013	
674	Screw, Coating SUS410T+5014	9305848010	9305848010	
	Screw, Tapping SUS410T+4014	9306379001	9306379001	
A	Screw (For Earth)	9357297002	9357297002	
688	Screw w/Washer	313681304205	313681304205	
765	Drain Pipe (L-type)	-	9301102000	
766	Drain Pipe Packing	-	9301143003	
781	Rubber Cushion	9300293013	9300293013	
815	Terminal-2P	9306489014	-	
815	Terminal-4P	-	9306488017	
820	Joint Pipe (Capillary)	9305680009	-	
916	Noise Insulation-G	9305910007	9306098001	
935	Reinforcement Plate	9306473006	9306473006	
942	Control Box Cover Metal	9306476007	9306476007	
942-2	Cont. Box Cover-B Metal	9305975006	9305975006	
982	Cord Clamp, Plastic	9302271002	9302271002	
985	Special Nut w/Washer	9304902003	9304902003	
986	Special Washer	9304903000	9304903000	

STANDARD ACCESSORIES

Name and Shape	Part No.	
	ASH7ASC-W ASH7ASCCW	ASH7RSC-W ASH7RSCCW
Wall hook bracket 	9304358008	9304358008
Remote control unit 	9306049010	9306049027
Battery 	313187358304	313187358304
Cable mark 	----	9301385007
Tapping screw (big) (ϕ 4 x 20) 	301141164200	301141164200
Tapping screw (small) (ϕ 3 x 12) 	301141533125	301141533125
Remote control unit holder 	9305642014	9305642014
Cloth tape 	9304232001	9304232001
Hexagon wrench 	9351228019	9351228019
Drain pipe (including drain packing) 	----	9303029015



9710K1222