



SPLIT TYPE ROOM AIR CONDITIONER WALL MOUNTED type

SERVICE MANUAL



Models

Indoor unit Outdoor unit

ASG17FSBQ AOG17FNBK
ASG17USBQ AOG17UNBK
(made in Thailand)

ASG17FSCQ AOG17FNBN
ASG17USCQ AOG17UNBN
(made in China)

CONTENTS

| | |
|---|----|
| SPECIFICATIONS | 1 |
| OUTLINE AND DIMENSIONS | 2 |
| REFRIGERANT SYSTEM DIAGRAM | 3 |
| CIRCUIT DIAGRAM | 4 |
| PRINTED CIRCUIT BOARD CIRCUIT DIAGRAM | 6 |
| DISASSEMBLY ILLUSTRATION | 8 |
| PARTS LIST | 14 |

SPECIFICATIONS

| | | |
|-----------------------|------------------------|------------------------|
| INDOOR UNIT | ASG17FSBQ ASG17FSCQ | ASG17USBQ ASG17FSCQ |
| OUTDOOR UNIT | AOG17FNBK AOG17FNBN | AOG17UNBK AOG17UNBN |
| COOLING CAPACITY (kW) | 4.70 | 4.70 |
| HEATING CAPACITY (kW) | - | 5.40 |

ELECTRICAL DATA

| | | | |
|---|---------|------|------|
| POWER SOURCE (V) | 230 | | |
| FREQUENCY (Hz) | 50 | | |
| RUNNING CURRENT (A) | COOLING | 8.3 | 7.9 |
| | HEATING | - | 8.9 |
| INPUT WATTS (kW) | COOLING | 1.85 | 1.76 |
| | HEATING | - | 1.99 |
| E.E.R. (kW/kW) | COOLING | 2.54 | 2.67 |
| | HEATING | - | 2.71 |
| MOISTURE REMOVAL (ℓ/hr) | 2.1 | | |
| AIR CIRCULATION-HI (m ³ /hr) | 560 | | |

COMPRESSOR

| | |
|----------------|--|
| TYPE | Hermetic type, Permanent split condenser, 2 pole, Single phase, Induction motor, Rotary |
| DISCRIMINATION | 5KS225DAC |

FAN MOTOR

| | | |
|-------------------------------|-------------|-------|
| POWER SOURCE | 230 | |
| DISCRIMINATION (INDOOR UNIT) | MFA - 17AT | |
| FAN SPEED (r.p.m.) | HI-SPEED | 1,300 |
| | MED-SPEED | 1,210 |
| | LO-SPEED | 1,110 |
| DISCRIMINATION (OUTDOOR UNIT) | MFB - 24JTT | |
| FAN SPEED (r.p.m.) | 780 | |

DIMENSIONS

| | | |
|--------------|----------------|-----------------|
| INDOOR UNIT | H x W x D (mm) | 285 x 900 x 172 |
| OUTDOOR UNIT | H x W x D (mm) | 650 x 830 x 320 |

WEIGHT

| | | | |
|--------------|------------------|---------|---------|
| INDOOR UNIT | GROSS / NET (kg) | 13 / 10 | |
| OUTDOOR UNIT | GROSS / NET (kg) | 51 / 47 | 56 / 52 |

REFRIGERANT CHARGE (R410A)

| | | | | |
|--------------------|-------------|-----------------|-------------------|---------------------|
| FULL CHARGE AMOUNT | Pipe Length | 25 ft (7.5 m) | 28.2 oz (800 g) | 44.1 oz (1,250 g) |
| | | 33 ft (10 m) | 29.5 oz (838 g) | 45.4 oz (1,288 g) |
| | | 49 ft (15 m) | 32.2 oz (913 g) | 48.1 oz (1,363 g) |
| | | 66 ft (20 m) | 34.8 oz (988 g) | 50.7 oz (1,438 g) |

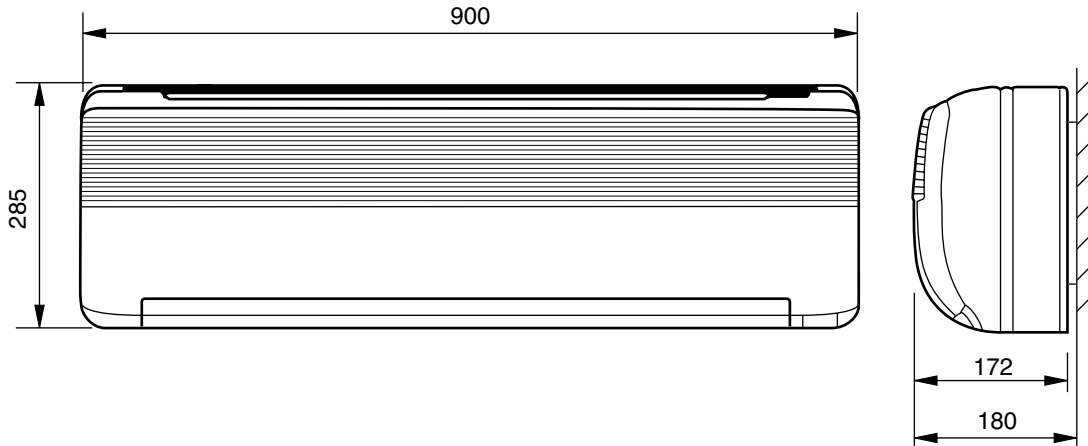
Note : Between 7.5 m and 20 m, when using a connection pipe other than that in the table, charge additional refrigerant with 0.53 oz (15 g) / 3.3 ft (1 m) as the criteria.

OUTLINE AND DIMENSIONS

Unit : mm

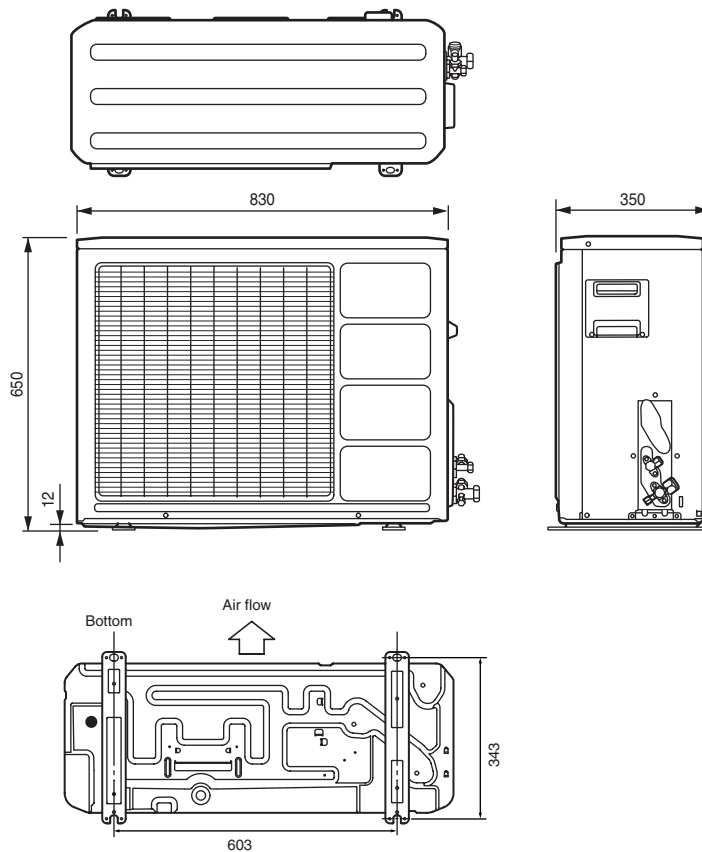
INDOOR UNIT

Models : ASG17FSBQ
ASG17USBQ
ASG17FSCQ
ASG17USCQ



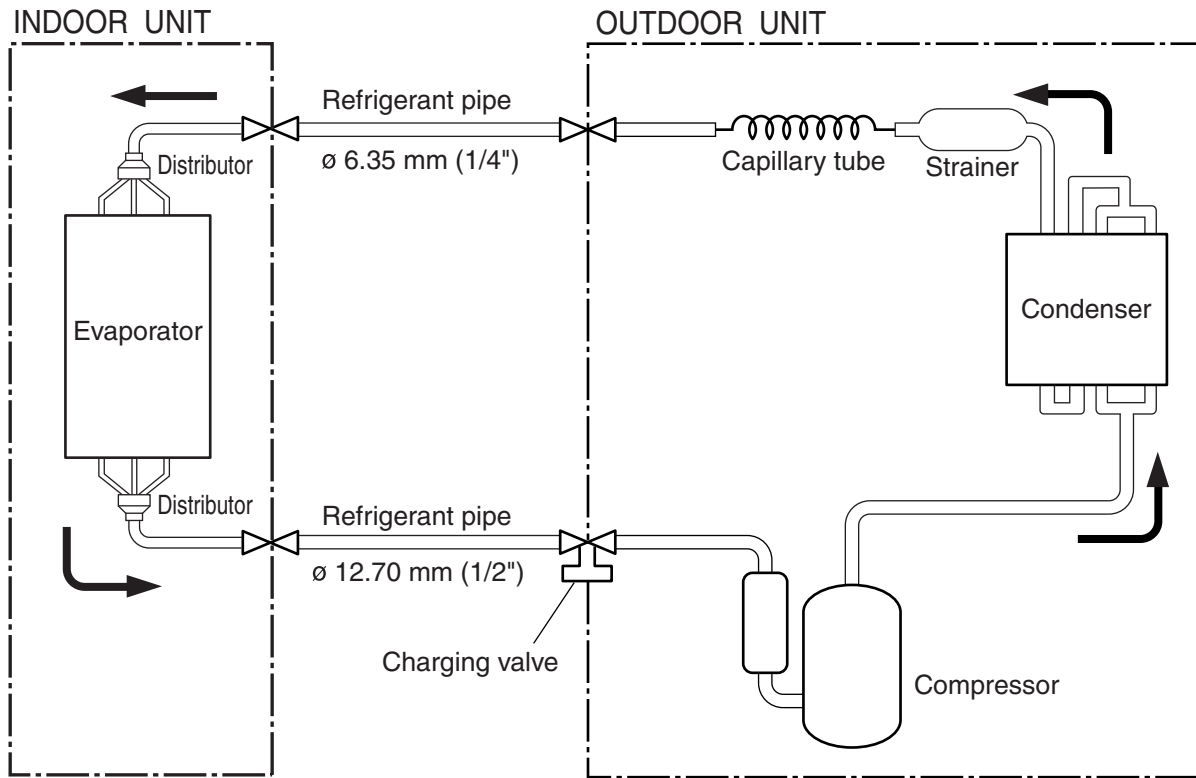
OUTDOOR UNIT

Models : AOG17FNBK
AOG17UNBK
AOG17FNBN
AOG17UNBN

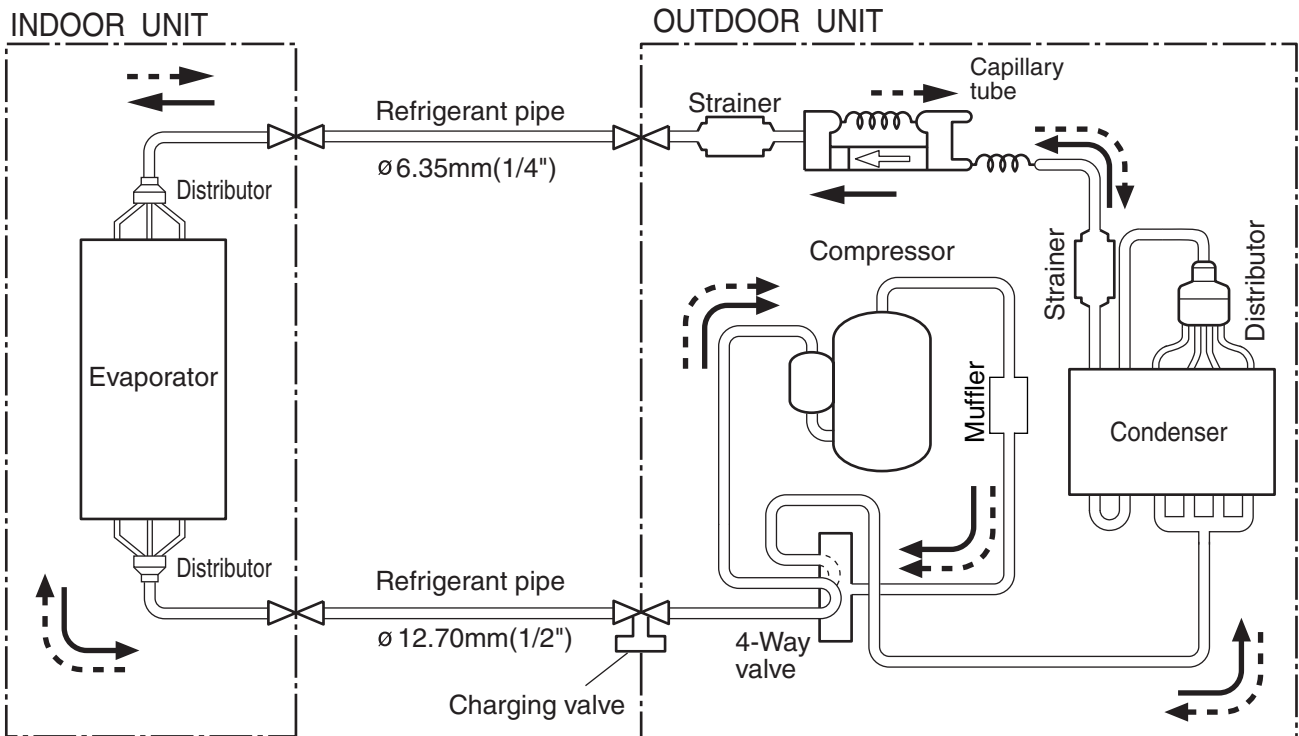


REFRIGERANT SYSTEM DIAGRAM

Models : ASG17FSBQ / AOG17FNBK
ASG17FSCQ / AOG17FNBN



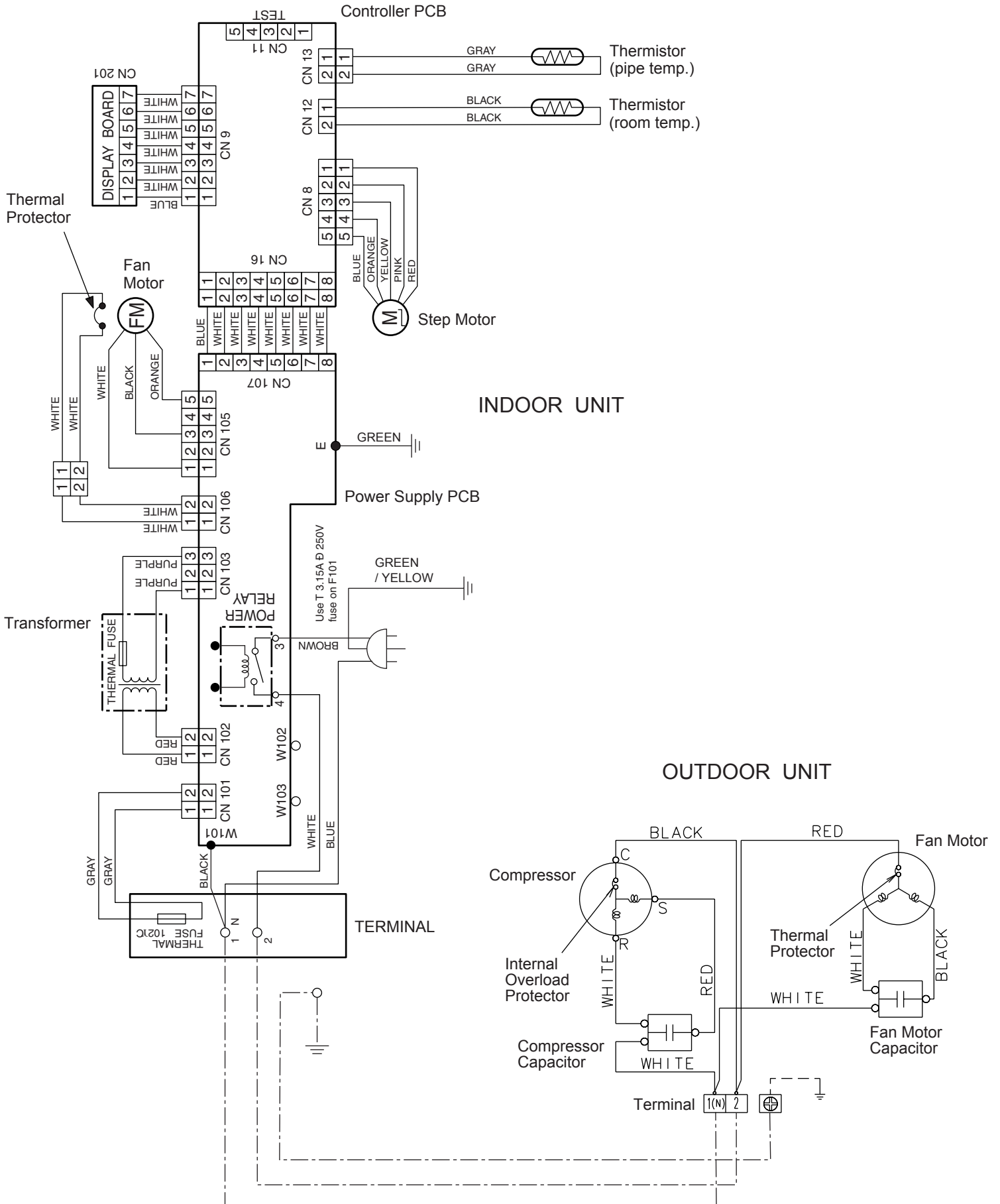
Models : ASG17USBQ / AOG17UNBK
ASG17USCQ / AOG17UNBN



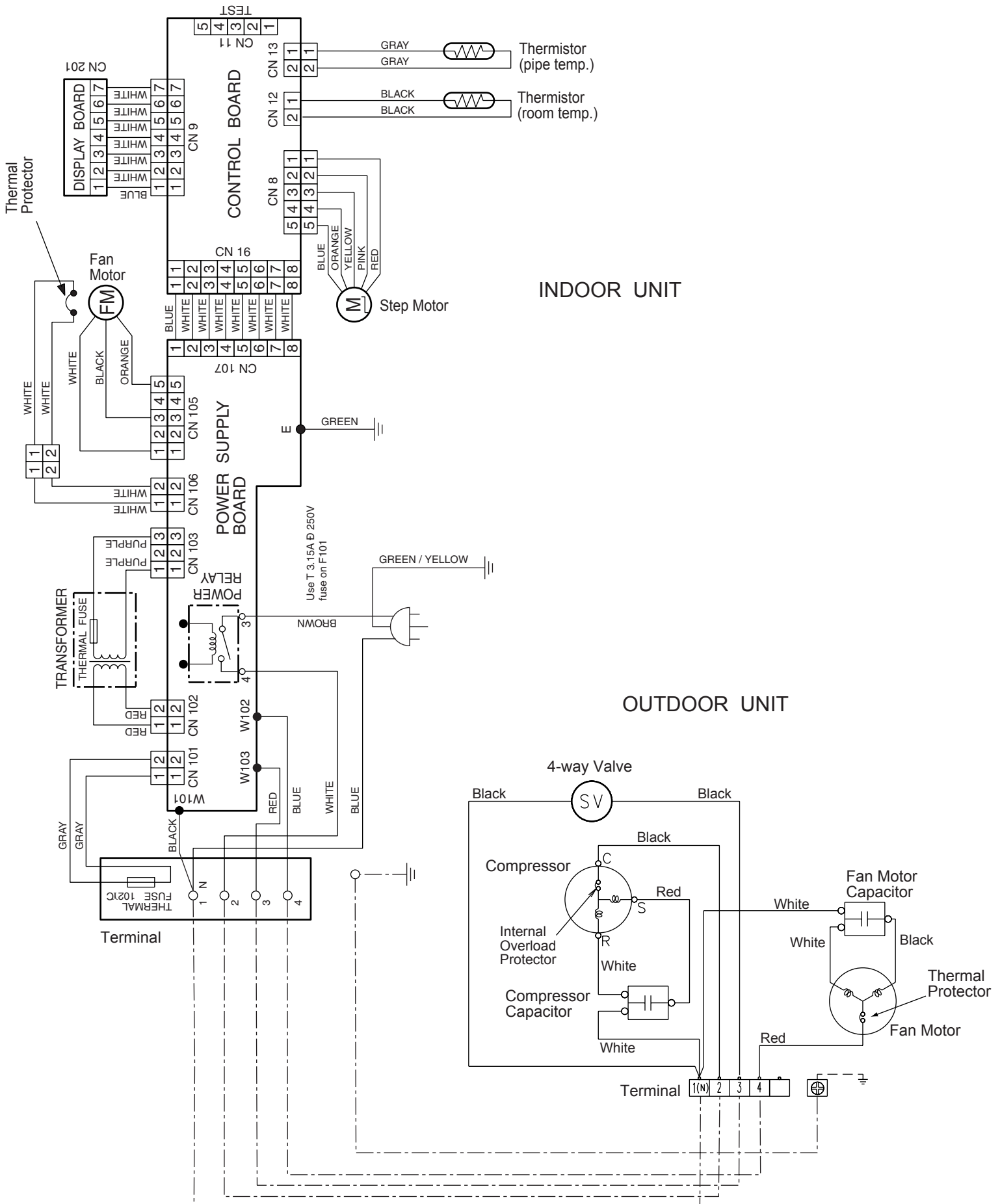
- Cooling
- - - - - Heating
- ⊗ Flare coupling

CIRCUIT DIAGRAM

Models : ASG17FSBQ / AOG17FNBK
ASG17FSCQ / AOG17FNBN



**Models : ASG17USBQ / AOG17UNBK
ASG17USCQ / AOG17UNBN**



INDOOR PCB CIRCUIT DIAGRAM

Model :
ASG17FSBQ
ASG17FSCQ

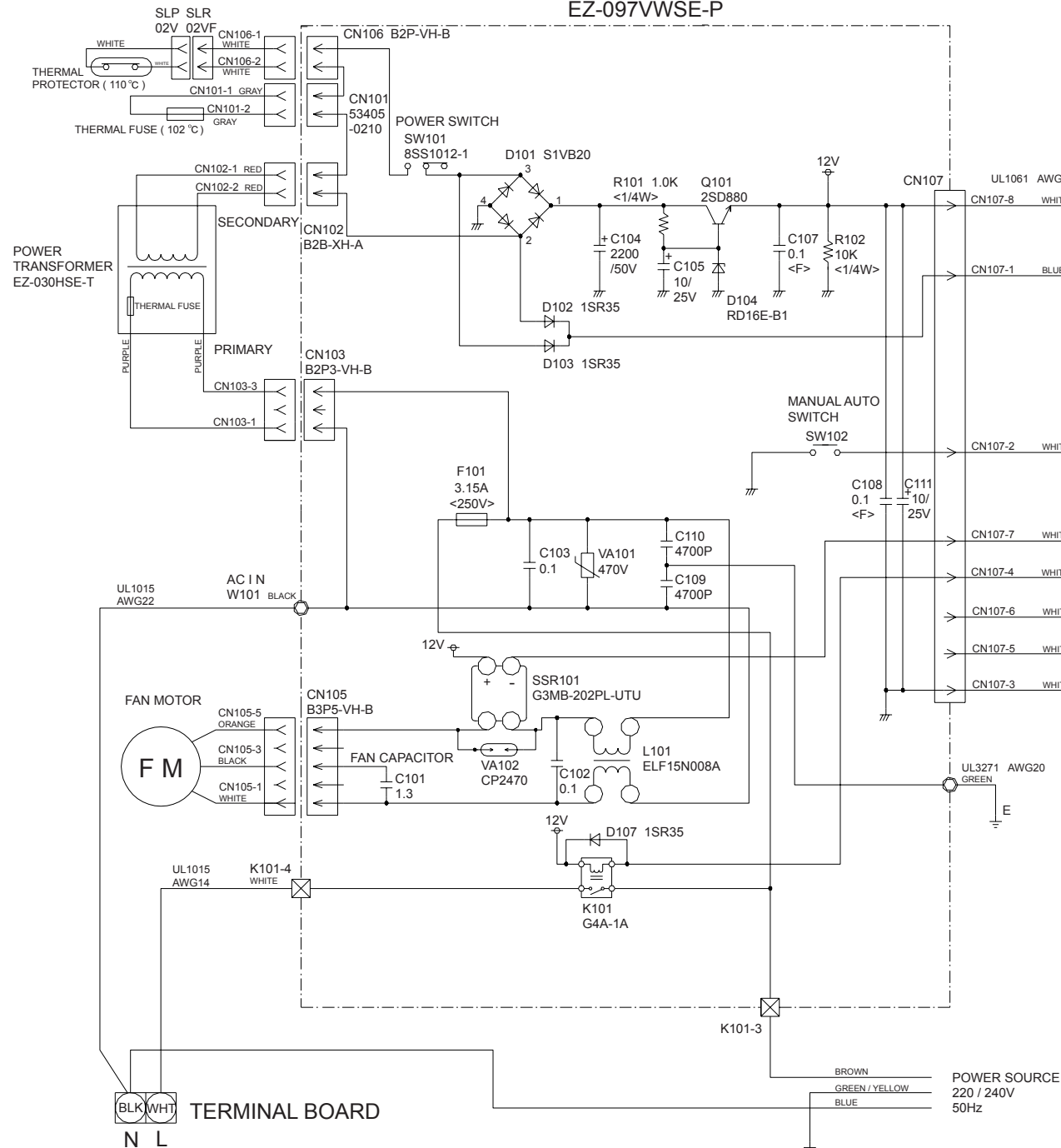
Jumper wire configurations

| Switch | Function | ON/Linked | OFF/Open |
|------------|----------------------|--------------------|--------------|
| JP 1/2/3/4 | Model change over | (Depends on model) | |
| JP5 | Custom code | A | B |
| JP6 | Auto change-over | enable | disable |
| JP-7/8 | Heating compensation | (See table 3) | |
| JP9 | Auto restart | enable | disable |
| JP10 | Multi/single | (not in use) | (not in use) |
| JP11 | Up-Down airflow flap | (not in use) | (not in use) |
| JP12 | Outdoor fan delay | (not in use) | (not in use) |

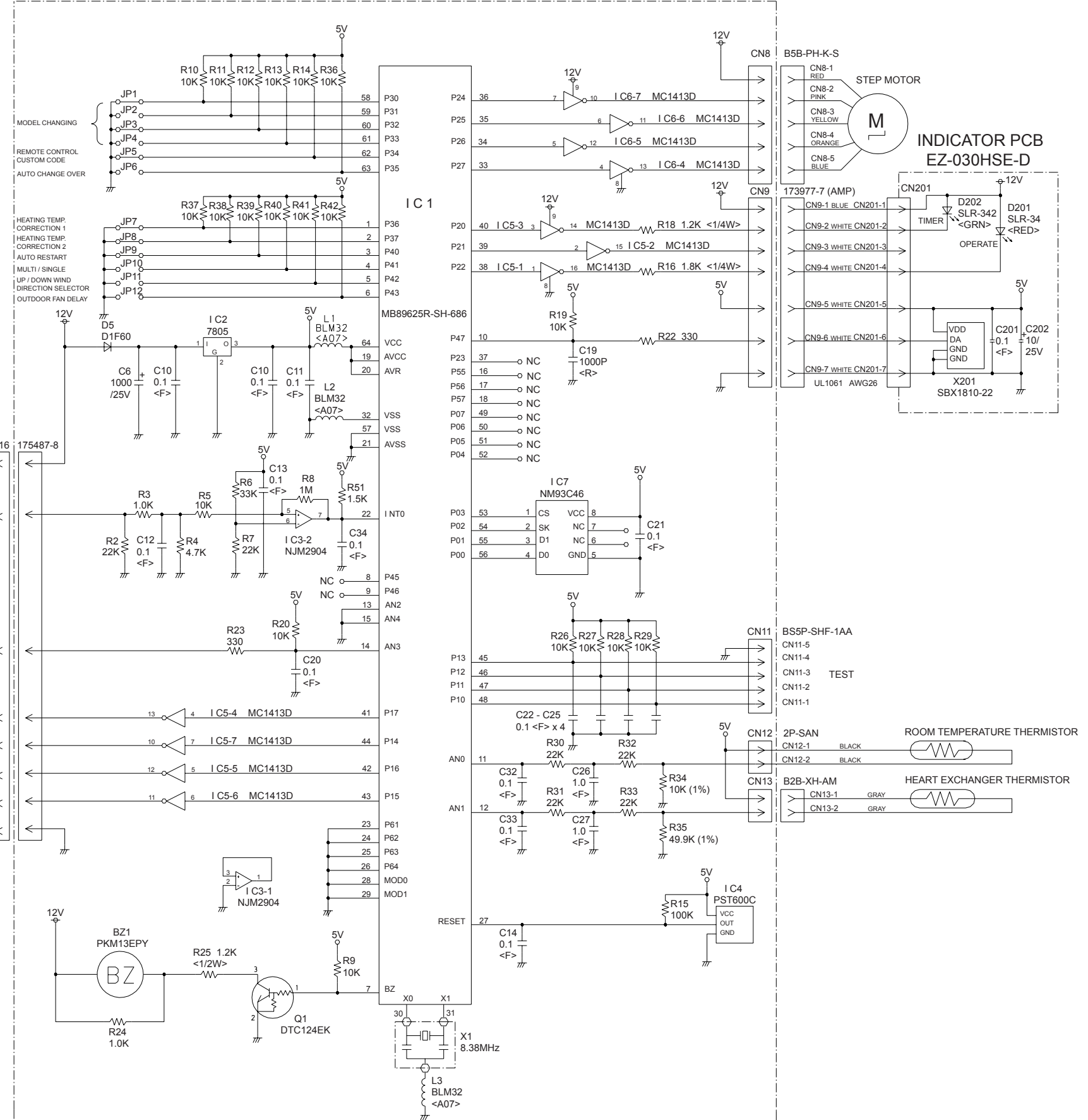
Table 3

| | |
|-----------|----|
| ON / ON | +4 |
| ON / OFF | 0 |
| OFF / ON | -2 |
| OFF / OFF | +2 |

POWER SUPPLY PCB EZ-097VWSE-P



CONTROLLER PCB ASSEMBLY (MAIN PCB) EZ-099MWSE-C (F)



Model :
 ASG17USBQ
 ASG17USCQ

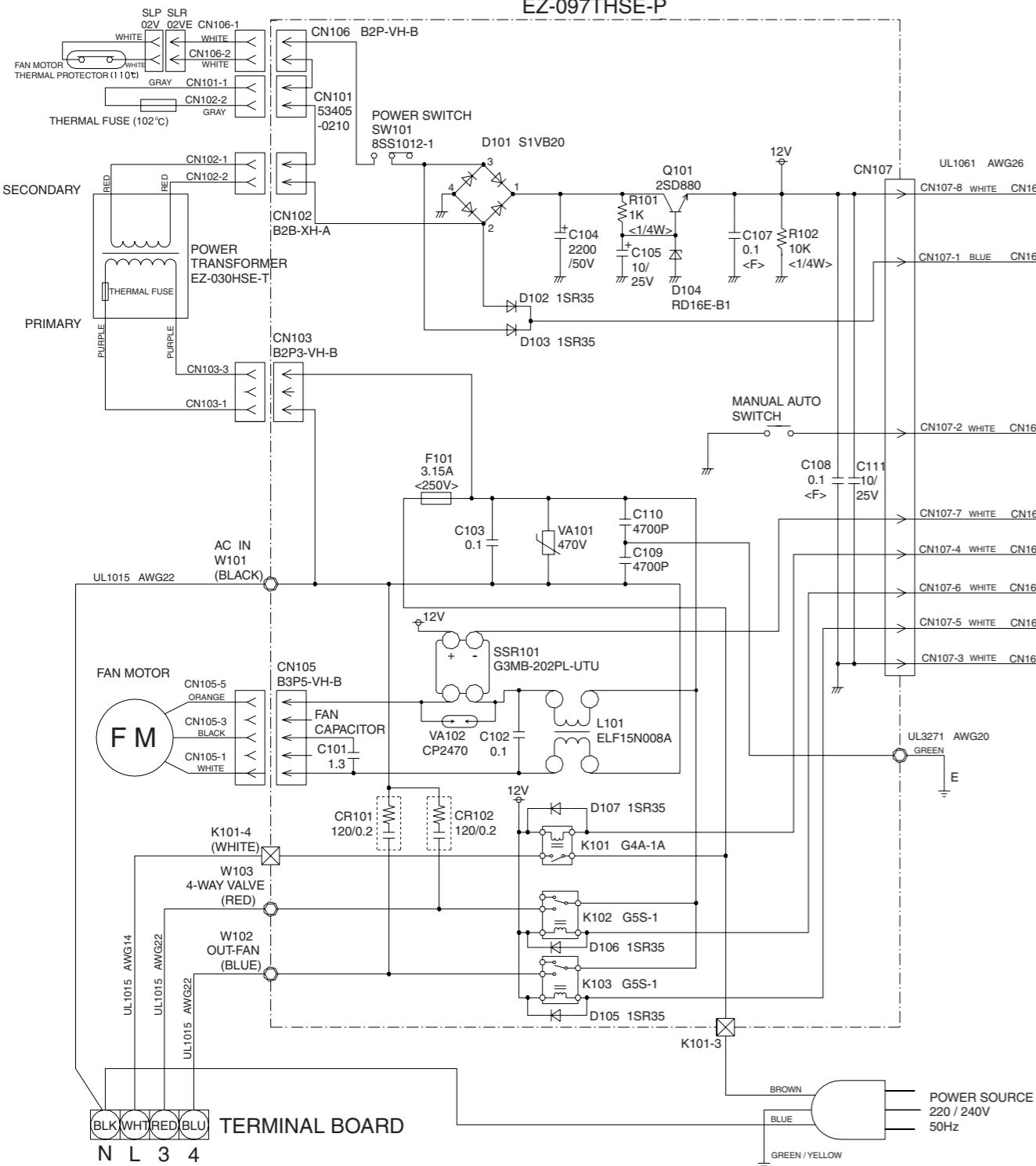
Jumper wire configurations

| Switch | Function | ON/Linked | OFF/Open |
|------------|----------------------|--------------------|--------------|
| JP 1/2/3/4 | Model change over | (Depends on model) | |
| JP5 | Custom code | A | B |
| JP6 | Auto change-over | enable | disable |
| JP-7/8 | Heating compensation | (See table 3) | |
| JP9 | Auto restart | enable | disable |
| JP10 | Multi\single | (not in use) | (not in use) |
| JP11 | Up-Down airflow flap | (not in use) | (not in use) |
| JP12 | Outdoor fan delay | (not in use) | (not in use) |

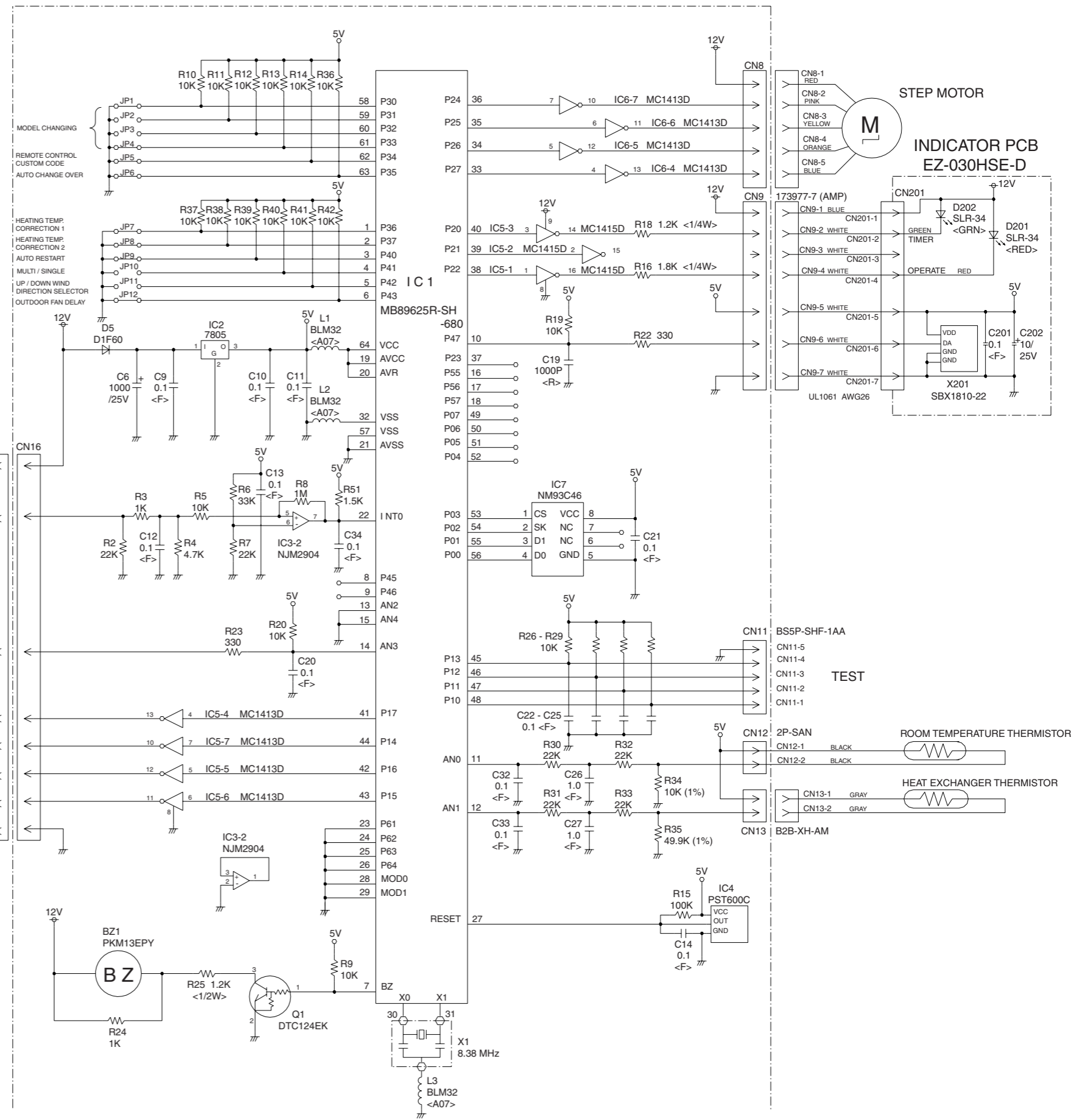
Table 3

| | |
|-----------|----|
| ON / ON | +4 |
| ON / OFF | 0 |
| OFF / ON | -2 |
| OFF / OFF | +2 |

POWER SUPPLY PCB EZ-097THSE-P

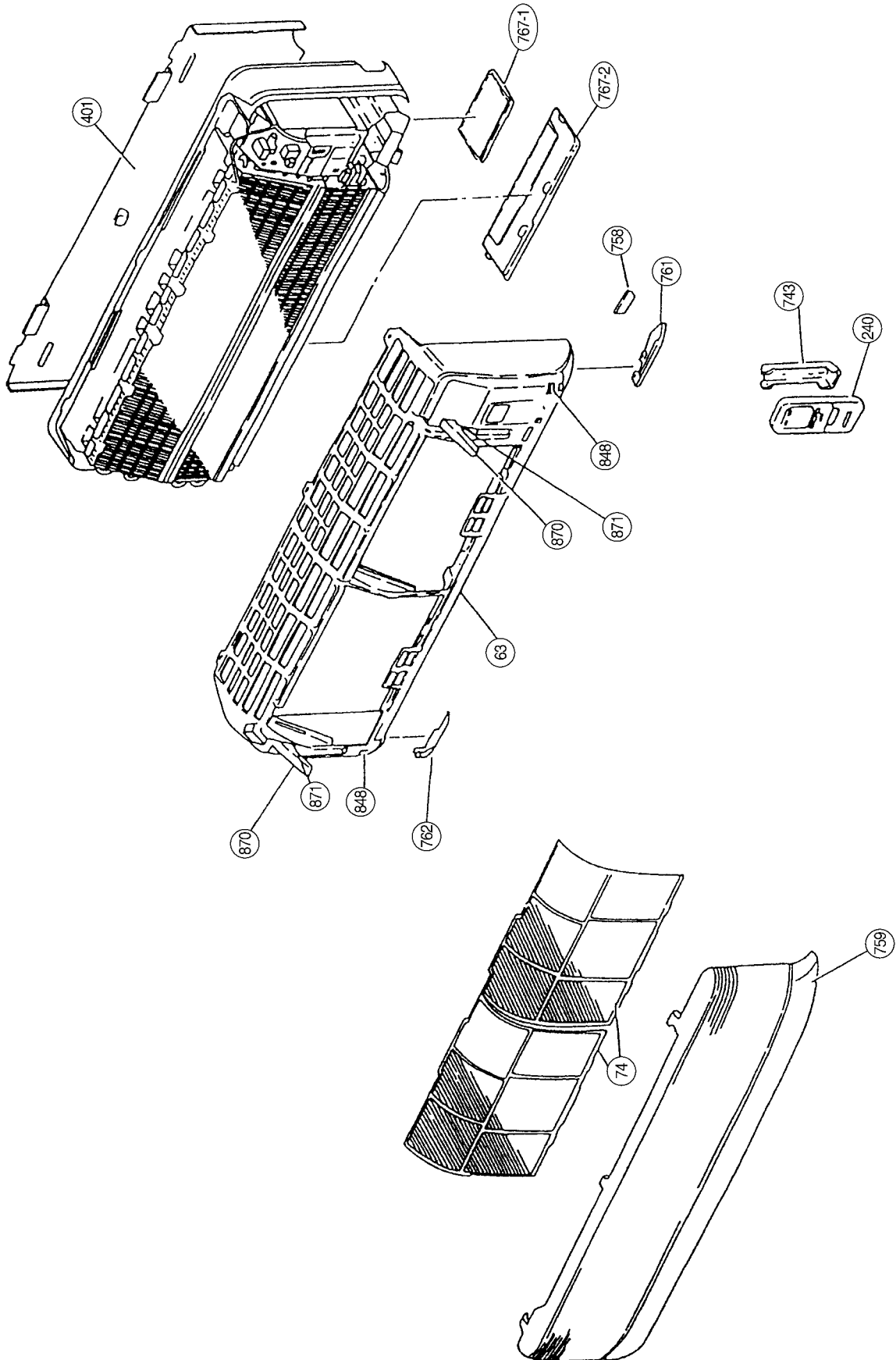


CONTROLLER PCB ASSEMBLY (MAIN PCB) EZ-099THSE-C (F)

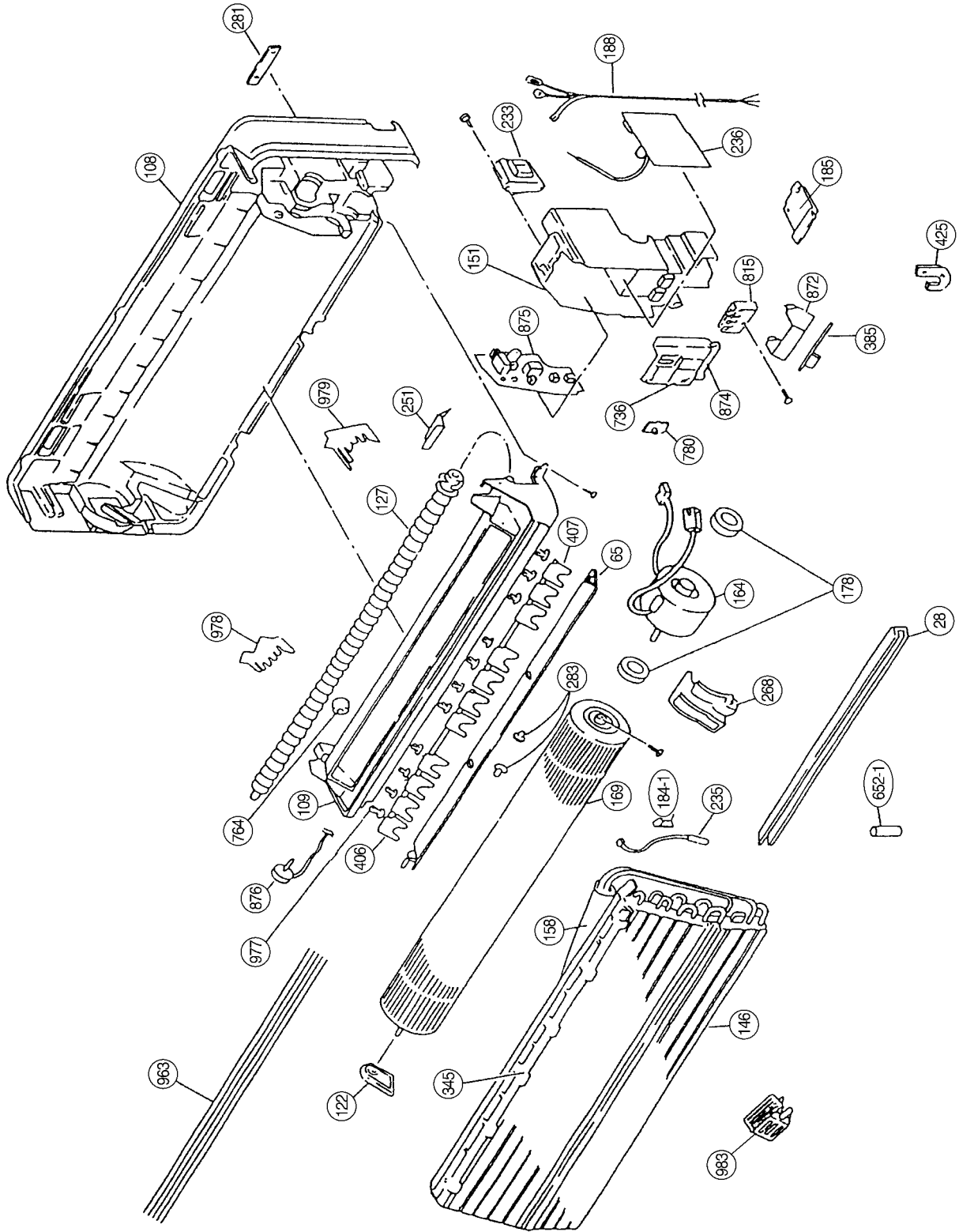


DISASSEMBLY ILLUSTRATION

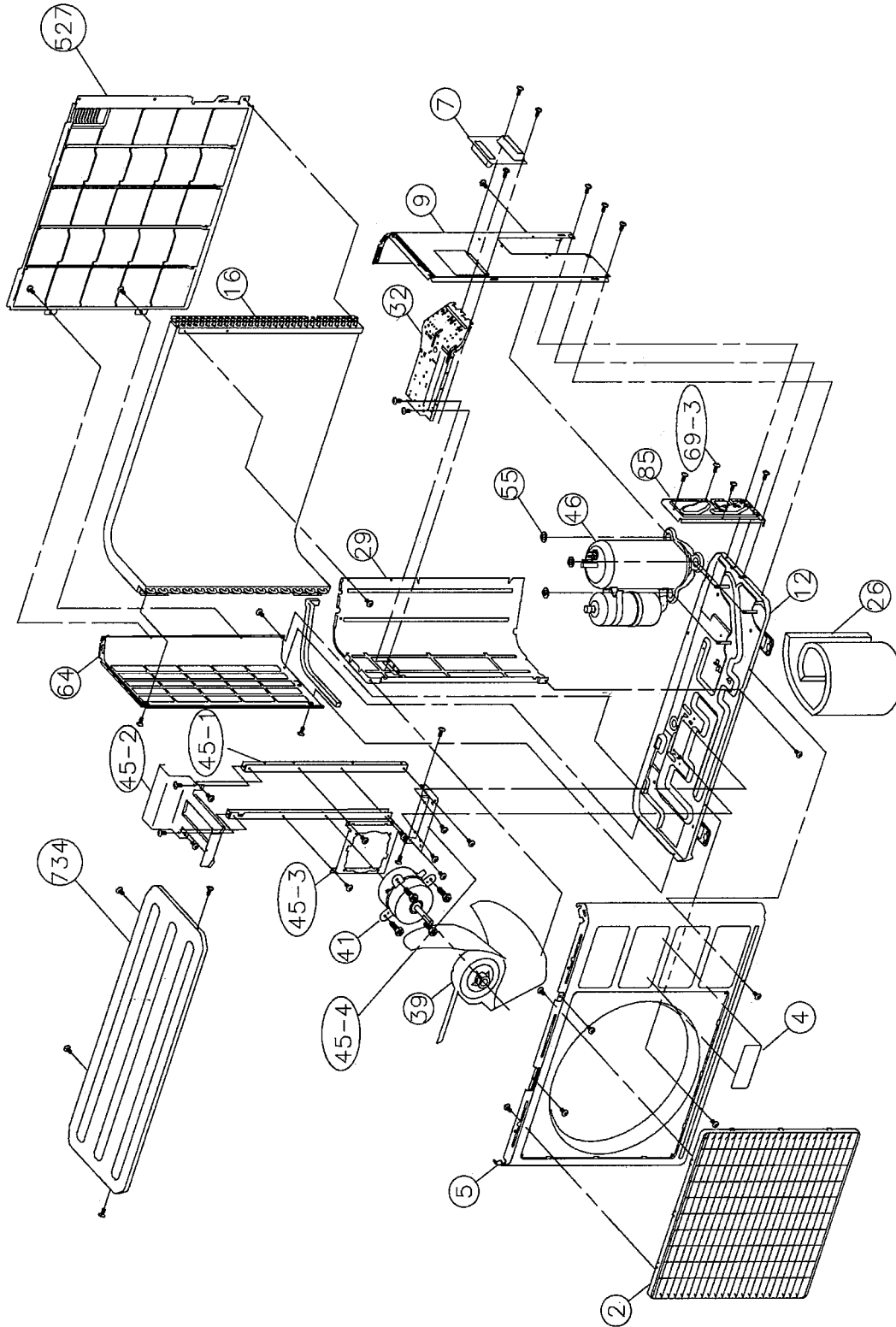
Models : ASG17FSBQ
ASG17USBQ
ASG17FSCQ
ASG17USCQ



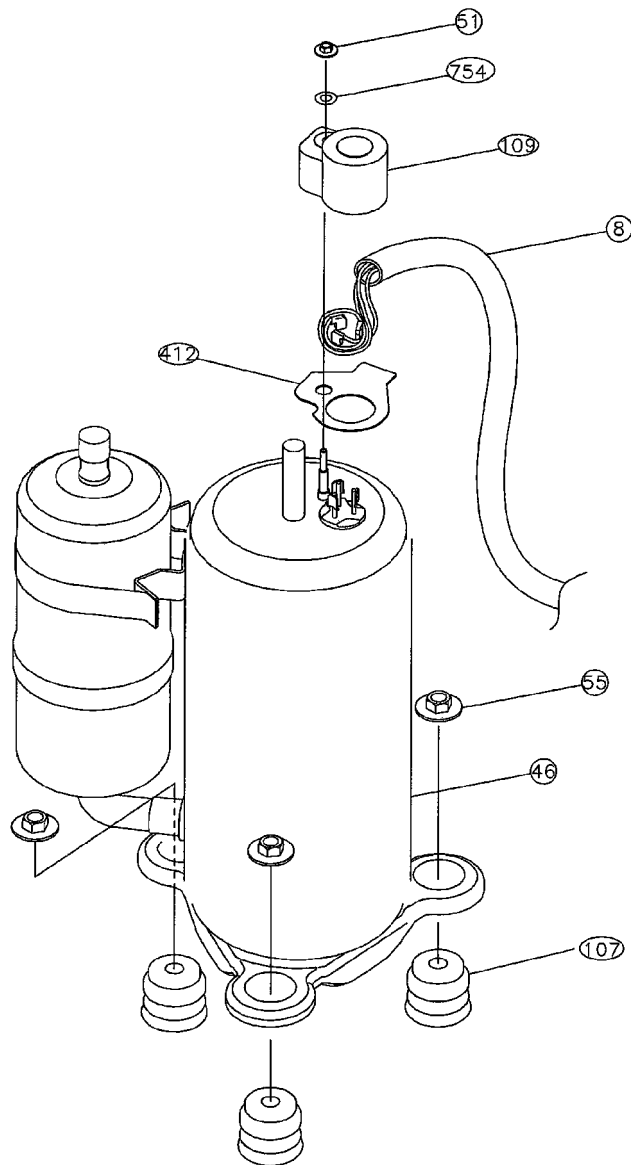
Models : ASG17FSBQ
ASG17USBQ
ASG17FSCQ
ASG17USCQ



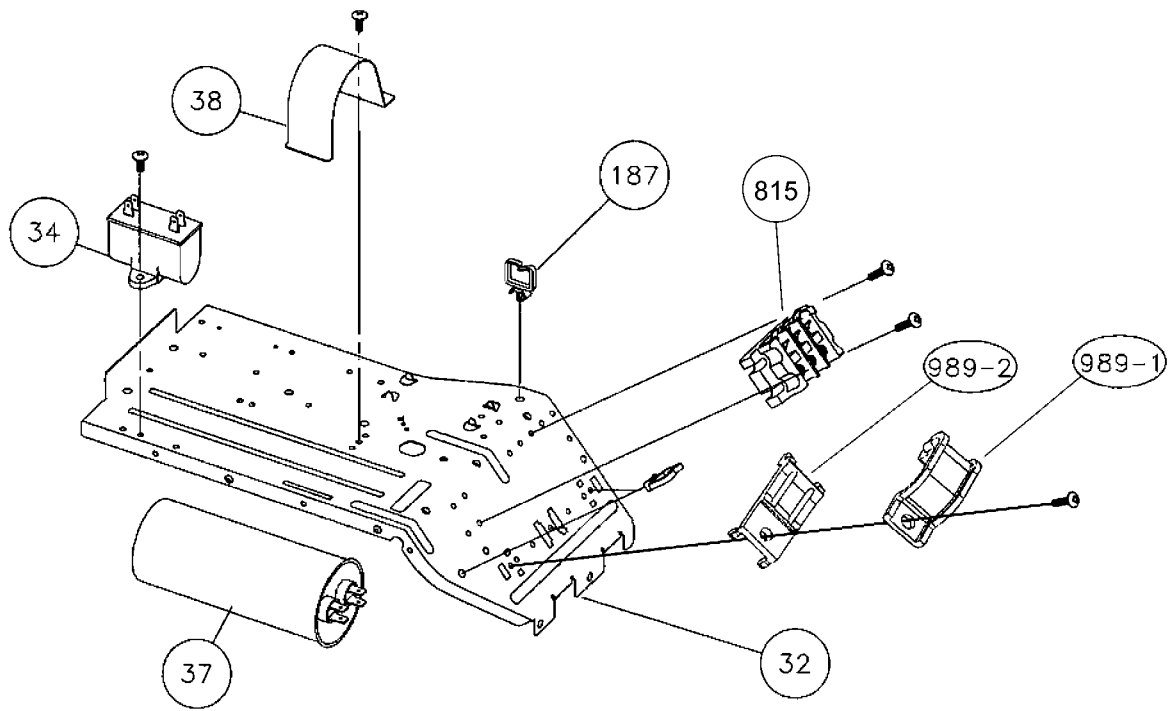
Models : AOG17FNBK
AOG17UNBK
AOG17FNBN
AOG17UNBN



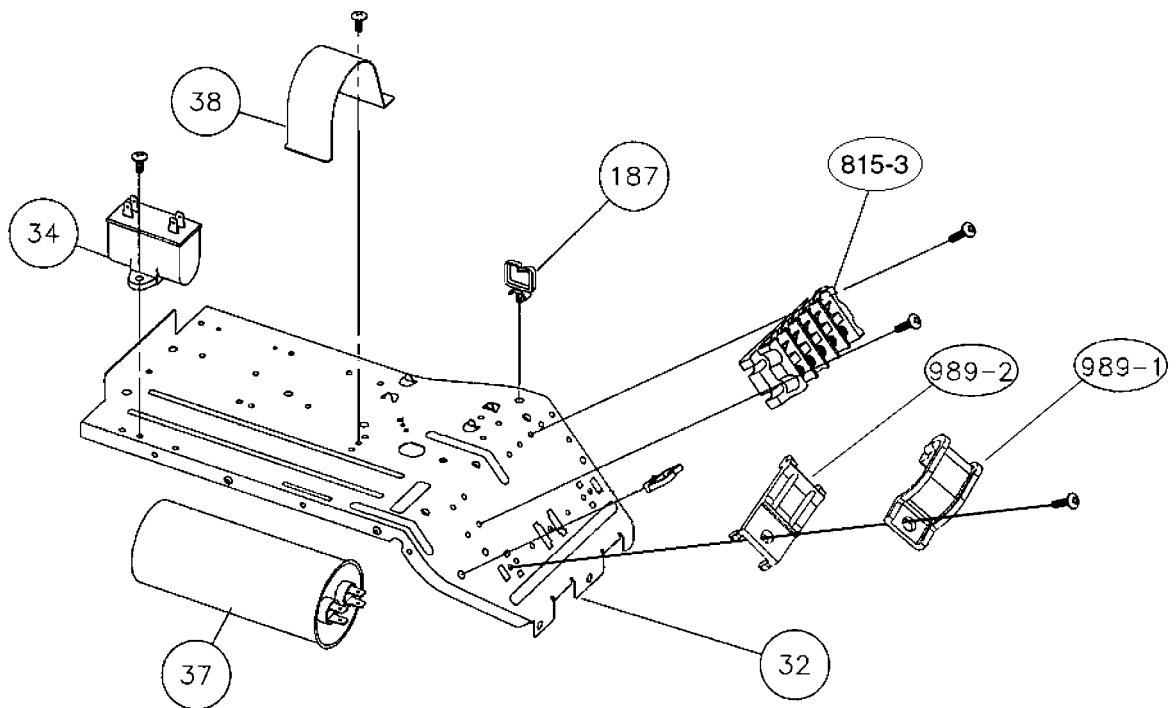
Models : AOG17FNBK
AOG17UNBK
AOG17FNBN
AOG17UNBN



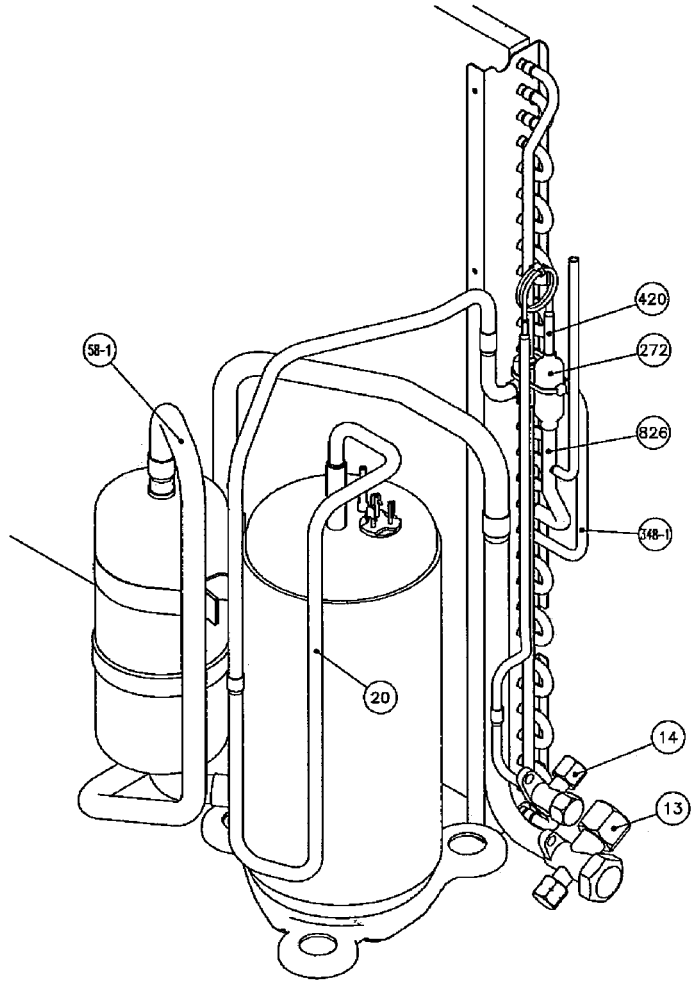
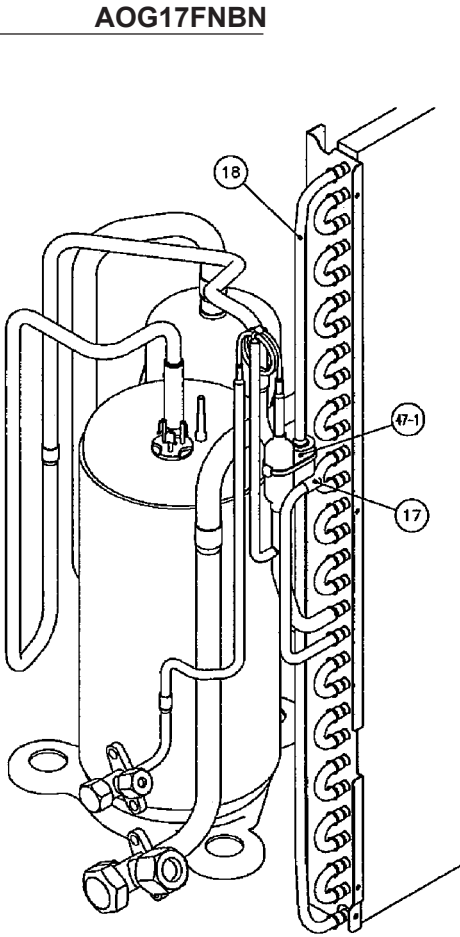
**Models : AOG17FNBK
AOG17FBNB**



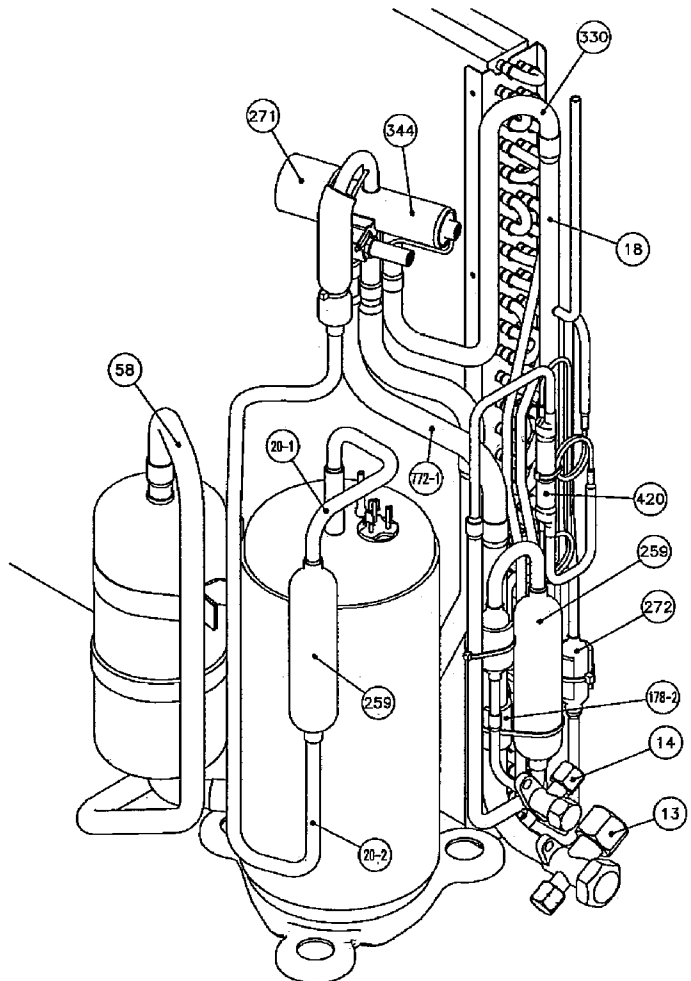
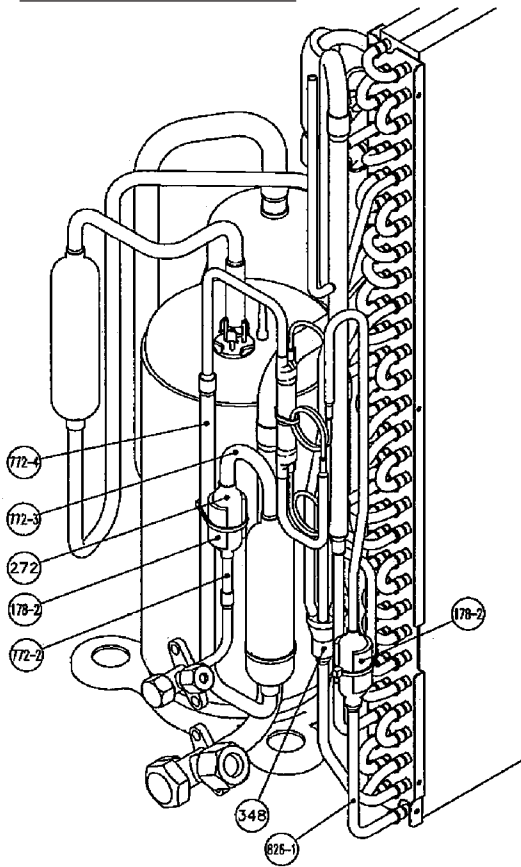
**Model : AOG17UNBK
AOG17UNBN**



Model : AOG17FNBK
AOG17FNBN



Model : AOG17UNBK
AOG17UNBN



PARTS LIST

INDOOR UNIT

| Ref. No. | Description | Part No. | | Ord. Q'ty |
|----------|---------------------------------|------------------------|------------------------|-----------|
| | | ASG17FSBQ ASG17FSCQ | ASG17USBQ ASG17USCQ | |
| 28 | Air Seal | 9304111016 | 9304111016 | |
| 63 | Front Panel Assy | 9354645196 | 9354645196 | |
| 65 | Louver Assy | 9354646056 | 9354646056 | |
| 74 | Filter | 9304097013 | 9304097013 | |
| 108 | Base | 9304107033 | 9304107033 | |
| 109 | Casing | 9304108016 | 9304108016 | |
| 122 | Bearing-B Assy | 9304470007 | 9304470007 | |
| 127 | Drain Hose Assy | 9368754013 | 9368754013 | |
| 146 | Evaporator Assy | 9363335002 | 9363335002 | |
| 151 | Control Box | 9304092001 | 9304092001 | |
| 158 | Connecting Pipe Assy | 9363632002 | 9363632002 | |
| 164 | Fan Motor | 9600432013 | 9600432013 | |
| 169 | Cross-flow Fan Assy | 9306327002 | 9306327002 | |
| 178 | Motor Cushion-G | 9304669005 | 9304669005 | |
| 184-1 | Thermostat Spring-A | 313728262708 | 313728262708 | |
| 185 | Wire Clamp | 9356959000 | 9356959000 | |
| 188 | Power Cord Assy | 9906072018 | 9906072018 | |
| 233 | Power Transformer | 9701803026 | 9701803026 | |
| 235 | Thermistor Assy-Pipe | 9702325015 | 9702325015 | |
| 236 | Controller PCB Assy | 9704341044 | 9704341204 | |
| 240 | Remote Control Unit | 9356602029 | 9356602036 | |
| 251 | Hose Clamp | 9304077008 | 9304077008 | |
| 268 | Motor Cover-B | 9304231004 | 9304231004 | |
| 281 | Clamp Metal (Pipe) | 9304242000 | 9304242000 | |
| 283 | Bushing-A | 9303529010 | 9303529010 | |
| 345 | Filter Guide | 9304110019 | 9304110019 | |
| 385 | Indicator PCB Assy | 9701119219 | 9701119219 | |
| 401 | Wall Hook Bracket | 9304093008 | 9304093008 | |
| 406 | Louver-L Assy | 9354644014 | 9354644014 | |
| 407 | Louver-R Assy | 9354643017 | 9354643017 | |
| 425 | Earth Terminal | 9357852003 | 9357852003 | |
| 652-1 | Thermistor Holder Pipe | 313714262805 | 313714262805 | |
| 736 | Operation Panel | 9354230002 | 9354230002 | |
| 743 | Remote Control Unit Holder Case | 9305642014 | 9305642014 | |
| 758 | Decoration Plate-A | 9354223011 | 9354223011 | |
| 759 | Intake Grille-B (GENERAL) | 9357856025 | 9357856025 | |
| 761 | Side Cover-R | 9303518069 | 9303518069 | |
| 762 | Side Cover-L | 9303520123 | 9303520123 | |
| 764 | Drain Cap Assy | 9304150008 | 9304150008 | |
| 767-1 | Bottom Cover-A | 9303536056 | 9303536056 | |
| 767-2 | Bottom Cover-B | 9303537053 | 9303537053 | |
| 780 | Key Top (Slide Switch) | 9303526002 | 9303526002 | |
| 815 | Terminal-2P | 9701955022 | ----- | |
| 815-3 | Terminal-4P | ----- | 9701955039 | |
| 848 | Catcher | 9306545000 | 9306545000 | |
| 870 | Arm | 9303525005 | 9303525005 | |
| 871 | Arm Spring | 9304377009 | 9304377009 | |
| 872 | Indicator Case | 9303631003 | 9303631003 | |
| 874 | Control Box Cover | 9304094005 | 9304094005 | |
| 875 | Power Supply PCB Assy | 9702451073 | 9702451066 | |
| 876 | Step Motor | 9304535003 | 9304535003 | |
| 963 | Fan Guard | 9356881011 | 9356881011 | |
| 977 | Louver Clip, Plastic | 9356880014 | 9356880014 | |
| 978 | Wire Bracket-L | 9356878011 | 9356878011 | |
| 979 | Wire Bracket-R | 9356877014 | 9356877014 | |
| 983 | Thermostat Protective Cover | 9356882001 | 9356882001 | |

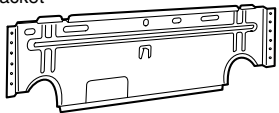
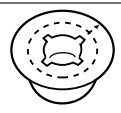
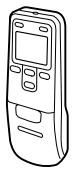
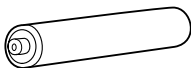

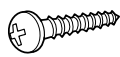

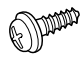

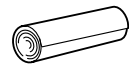

OUTDOOR UNIT

| Ref. No. | Description | Part No. | Ord. Q'ty |
|----------|---------------------------|------------------------|-----------|
| | | AOG17FNBK AOG17FNBN | |
| 2 | Fan Guard | 9371187013 | |
| 4 | Emblem-Rear | 9372171011 | |
| 5 | Front Panel Ptd | 9371924014 | |
| 7 | Connector Cover (Cabinet) | 9366398004 | |
| 8 | Wire Assy (Comp) | 9372334010 | |
| 9 | Side Panel R Ptd | 9371927015 | |
| 12 | Base Assy, Ptd | 9371920054 | |
| 13-1 | 3-Way Valve Assy | 9372205112 | |
| 13-2 | 2-Way Valve Assy | 9372204016 | |
| 16 | Condenser Assy | 9372181041 | |
| 26 | Compressor Cover | 9372327012 | |
| 29 | Separate Wall | 9371933016 | |
| 32 | Control Box | 9371935010 | |
| 34 | Capacitor, Plastic | 9900130022 | |
| 37 | Running Capacitor | 9703107122 | |
| 38 | Capacitor Clamp Metal | 9351770013 | |
| 39 | Propeller Fan Assy | 9366378013 | |
| 41 | Motor Induct | 9601671022 | |
| 45-1 | Motor Bracket | 9371929019 | |
| 45-2 | Motor Bracket-Top | 9371931012 | |
| 45-3 | Motor Bracket Center | 9371930015 | |
| 45-4 | Motor Bracket Bottom | 9371932019 | |
| 46 | Compressor Assy | 9372558027 | |
| 47-1 | Rubber (Discharge Pipe) | 313194159807 | |
| 51 | Special Nut M5 | 9300301015 | |
| 55 | Special Nut M8 | 9355091008 | |
| 64 | Side Panel L Ptd | 9371926018 | |
| 69-3 | Bolt, Hex. Socket | 301210060360 | |
| 85 | Valve Plate Ptd | 9371928012 | |
| 107 | Rubber Seat-A | 9351049010 | |
| 109 | Terminal Cover (Comp) | 9371511016 | |
| 187 | Clip (Cable) | 9352715006 | |
| 272 | Strainer | 9369287008 | |
| 412 | Cover Gasket (Comp.) | 9371512013 | |
| 527 | Protective Net | 9371934013 | |
| 734 | Top Plate | 9371925011 | |
| 735-3 | Capillary Assy | 9372197066 | |
| 754 | Terminal Gask. Washer | 9351053017 | |
| 815 | Terminal-3P | 9900203016 | |
| 982-1 | Cord Clamp | 9356857009 | |
| 982-2 | Cord Clamp-C | 9359677000 | |

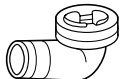
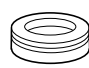
| Ref. No. | Description | Part No. | Ord. Q'ty |
|----------|---------------------------|------------------------|-----------|
| | | AOG17UNBK AOG17UNBN | |
| 2 | Fan Guard | 9371187013 | |
| 4 | Emblem-Rear | 9372171011 | |
| 5 | Front Panel Ptd | 9371924014 | |
| 7 | Connector Cover (Cabinet) | 9366398004 | |
| 8 | Wire Assy (Comp) | 9372334010 | |
| 9 | Side Panel R Ptd | 9371927015 | |
| 12 | Base Assy, Ptd | 9371920054 | |
| 13-1 | 3-Way Valve Assy | 9372205112 | |
| 13-2 | 2-Way Valve Assy | 9372204016 | |
| 16 | Condenser Assy | 9372181034 | |
| 26 | Compressor Cover A | 9372327012 | |
| 29 | Separate Wall | 9371933016 | |
| 32 | Control Box | 9371935010 | |
| 34 | Capacitor, Plastic | 9900130022 | |
| 37 | Running Capacitor | 9703107122 | |
| 38 | Capacitor Clamp Metal | 9351770013 | |
| 39 | Propeller Fan Assy | 9366378013 | |
| 41 | Motor Induct | 9601671022 | |
| 45-1 | Motor Bracket | 9371929019 | |
| 45-2 | Motor Bracket-Top | 9371931012 | |
| 45-3 | Motor Bracket Ctr | 9371930015 | |
| 45-4 | Motor Bracket Bottom | 9371932019 | |
| 46 | Compressor Assy | 9372558027 | |
| 51 | Special Nut M5 | 9300301015 | |
| 55 | Special Nut M8 | 9355091008 | |
| 64 | Side Panel L Ptd | 9371926018 | |
| 69-3 | Bolt, Hex. Socket | 301210060360 | |
| 85 | Valve Plate Ptd | 9371928012 | |
| 107 | Rubber Seat-A | 9351049010 | |
| 109 | Terminal Cover (Comp) | 9371511016 | |
| 187 | Clip (Cable) | 9352715006 | |
| 199 | Br Sheet | 9363708059 | |
| 259 | Muffler | 9372369012 | |
| 271 | 4-Way Valve Rubber | 313728251908 | |
| 272 | Strainer | 9369287008 | |
| 343 | Solenoid | 9900165017 | |
| 344 | 4-Way Valve | 9970036019 | |
| 412 | Cover Gasket (Comp.) | 9371512013 | |
| 527 | Protective Net | 9371934013 | |
| 734 | Top Panel | 9371925011 | |
| 735-3 | Capillary Assy | 9372197042 | |
| 754 | Terminal Gask. Washer | 9351053017 | |
| 815-3 | Terminal-5P | 9900203023 | |
| 982-1 | Cord Clamp | 9356857009 | |
| 982-2 | Cord Clamp-C | 9359677000 | |

STANDARD ACCESSORIES

INDOOR UNIT ACCESSORIES

| Name and Shape | Part No. | |
|---|------------------------|-------------------------|
| | ASG17FSBQ ASG17FSCQ | ASG17USBQ ASG17USCQ |
| Wall hook bracket  | 9304093008 | 9304093008 |
| Wall cap  | 313714296205 | 313714296205 |
| Remote control unit  | 9356602029 (AR-AB9) | 9356602036 (AR-AB10) |
| Battery (penlight)  | 0600185534 | 0600185534 |
| Cable mark  | ---- | 9301385007 |
| Tapping screw (Big) (φ4 x 20)  | 301141164200 | 301141164200 |
| Tapping screw (Small) (φ3 x 12)  | 0700019036 | 0700019036 |
| Flange screw (φ4 x 10)  | 9305114009 | 9305114009 |
| Remote control unit holder case  | 9305642014 | 9305642014 |
| Cloth tape  | 9308117007 | 9308117007 |
| Seal-A  | 9304536000 | 9304536000 |

OUTDOOR UNIT ACCESSORIES

| Name and Shape | Part No. | |
|--|------------------------|------------------------|
| | AOG17FNBK AOG17FNBN | AOG17UNBK AOG17UNBN |
| Drain pipe (Including drain packing)  | ---- | 9303029015 |
| Drain cap  | ---- | 313166024302 |

0401G2513