



SPLIT TYPE AIR CONDITIONER (50Hz) DUCT type

SERVICE MANUAL

Indoor unit	Outdoor unit
ARG36ALB3	AOG36ACA3L
ARG36RLB3	AOG36RCD3L
ARG45ALB3	AOG45ACA3L
ARG45RLB3	AOG45RCD3L

CONTENTS

SPECIFICATIONS
REFRIGERANT SYSTEM DIAGRAM
CIRCUIT DIAGRAM
PCB CIRCUIT DIAGRAM
DISASSEMBLY ILLUSTRATION
PARTS LIST
STANDARD ACCESSORIES

SPECIFICATIONS

INDOOR UNIT		ARG36ALB3	ARG36RLB3	ARG45ALB3	ARG45RLB3
OUTDOOR UNIT		AOG36ACA3L	AOG36RCD3L	AOG45ACA3L	AOG45RCD3L
COOLING CAPACITY	(kW)	10.3 - 10.5	10.3 - 10.5	12.4 - 12.7	12.4 - 12.7
HEATING CAPACITY	(kW)	-----	10.5 - 10.7	-----	13.4 - 13.7

ELECTRICAL DATA

POWER SOURCE	(V)	380 - 415				
FREQUENCY	(Hz)	50				
RUNNING CURRENT	(A)	COOLING	6.4 - 6.4	6.6 - 6.6	7.50 - 7.50	7.50 - 7.50
		HEATING	-----	6.1 - 5.8	-----	7.40 - 7.40
INPUT WATTS	(kW)	COOLING	3.73 - 3.80	3.88 - 3.95	4.45 - 4.57	4.45 - 4.57
		HEATING	-----	3.18 - 3.25	-----	4.23 - 4.35
E.E.R.	(kW / kW)	COOLING	2.76 - 2.76	2.65 - 2.66	2.79 - 2.78	2.79 - 2.78
		HEATING	-----	3.30 - 3.29	-----	3.17 - 3.15
MOISTURE REMOVAL	(ℓ/hr)	5.0	5.0	6.0	6.0	
AIR CIRCULATION-Hi	(m³/hr)	2,000	2,000	2,200	2,200	

COMPRESSOR

TYPE	Hermetic type, 2 pole, Three phase, Induction motor	
DISCRIMINATION	CRLQ-0350-TFD	CRPQ-0450-TFD

FAN MOTOR

POWER SOURCE	(V)	380 - 415	
INDOOR UNIT	DISCRIMINATION	MFA-45BT	
	HI-SPEED	1,280	1,320
	MED-SPEED	1,200	1,270
	LO-SPEED	1,130	1,200
OUTDOOR UNIT	DISCRIMINATION	MFB-362F	
	HI-SPEED	790	
	LO-SPEED	510	

DIMENSIONS

INDOOR UNIT	H x W x D (mm)	270 X 1,210 X 700
OUTDOOR UNIT	H x W x D (mm)	1,152 X 940 X 370

WEIGHT

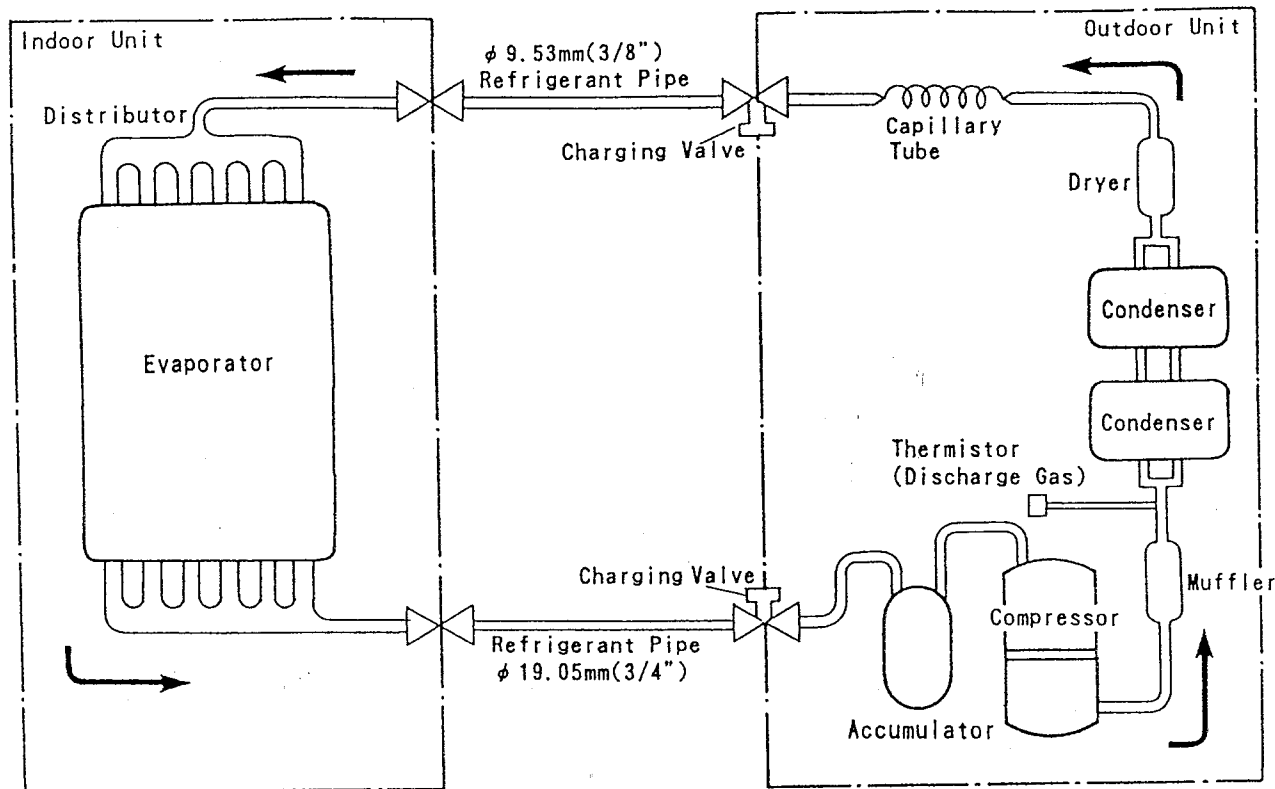
INDOOR UNIT	Gross / Net (kg)	60 / 45			
OUTDOOR UNIT	Gross / Net (kg)	108 / 94	110 / 96	116 / 102	122 / 108

REFRIGERANT CHARGE

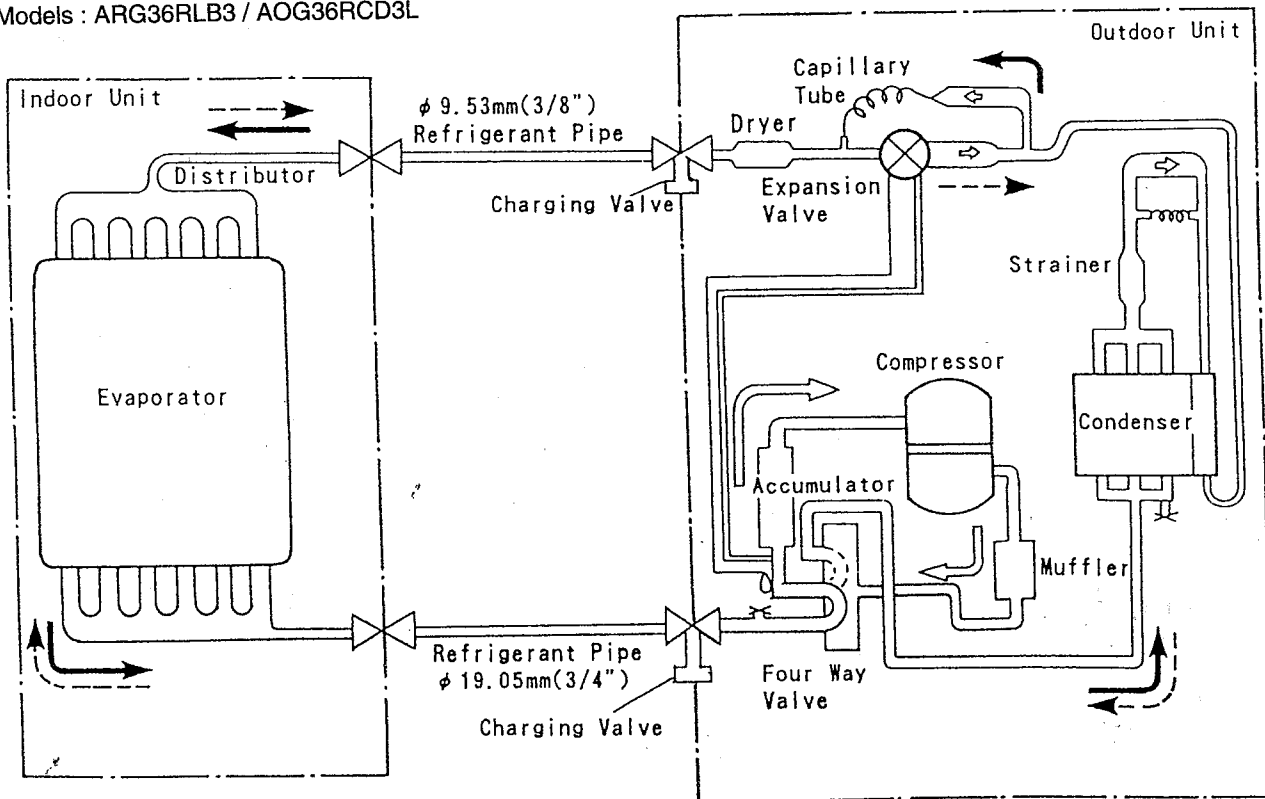
FULL CHARGE AMOUNT	Pipe Length	5 m (16 ft.)	2,150 g (75.8 oz.)	2,800 g (98.8 oz.)	3,150 g (111.1 oz.)	3,400 g (119.9 oz.)
		10 m (33 ft.)	2,285 g (80.6 oz.)			
		20 m (66 ft.)	2,555 g (90.1 oz.)			
		30 m (99 ft.)	2,825 g (99.6 oz.)	3,200 g (112.9 oz.)	3,550 g (125.2 oz.)	3,800 g (134.0 oz.)
		40 m (132 ft.)	3,095 g (109.2 oz.)	3,600 g (127.0 oz.)	3,950 g (139.3 oz.)	4,200 g (148.2 oz.)
		50 m (164 ft.)	3,365 g (118.7 oz.)	4,000 g (141.1 oz.)	4,200 g (148.2 oz.)	4,600 g (162.3 oz.)
ADDITIONAL CHARGE		27 g / m (0.288 oz./ ft.)	40 g / m (0.427 oz./ ft.)			

REFRIGERANT SYSTEM DIAGRAM

Models : ARG36ALB3 / AOG36ACA3L



Models : ARG36RLB3 / AOG36RCD3L

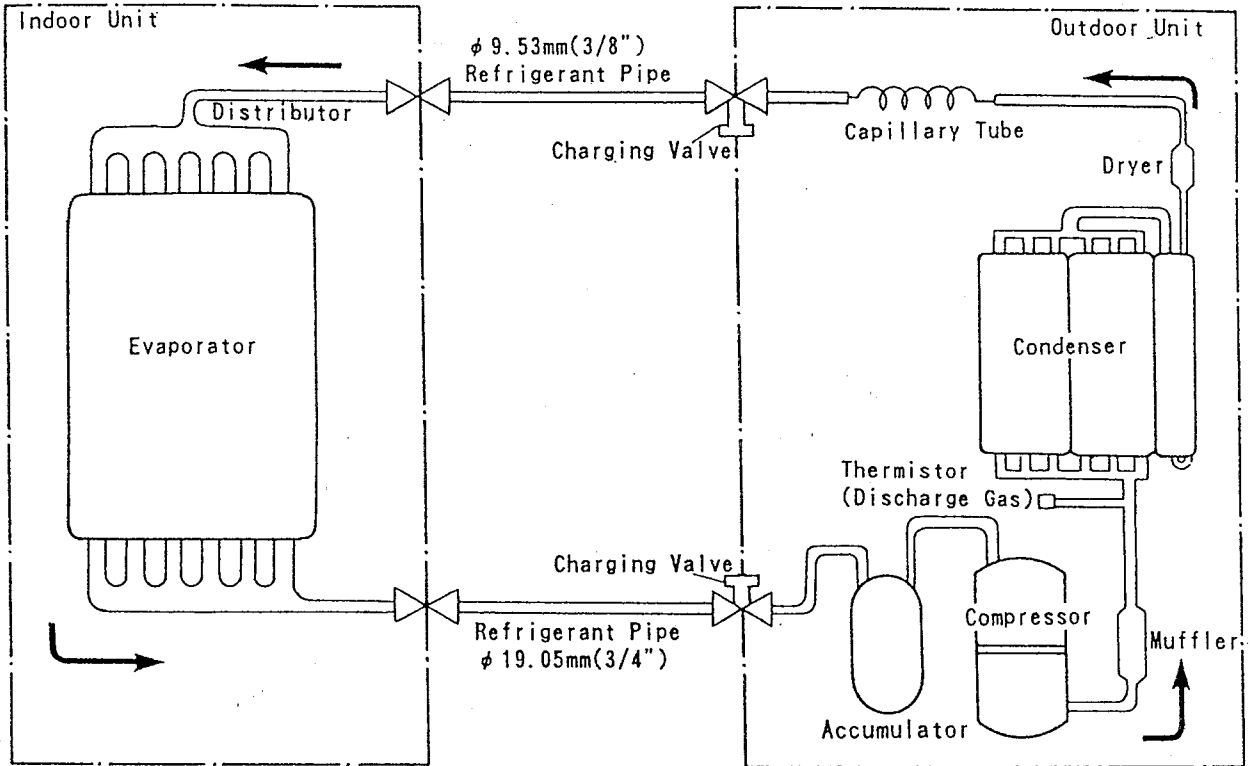


⊗ : Flare coupling

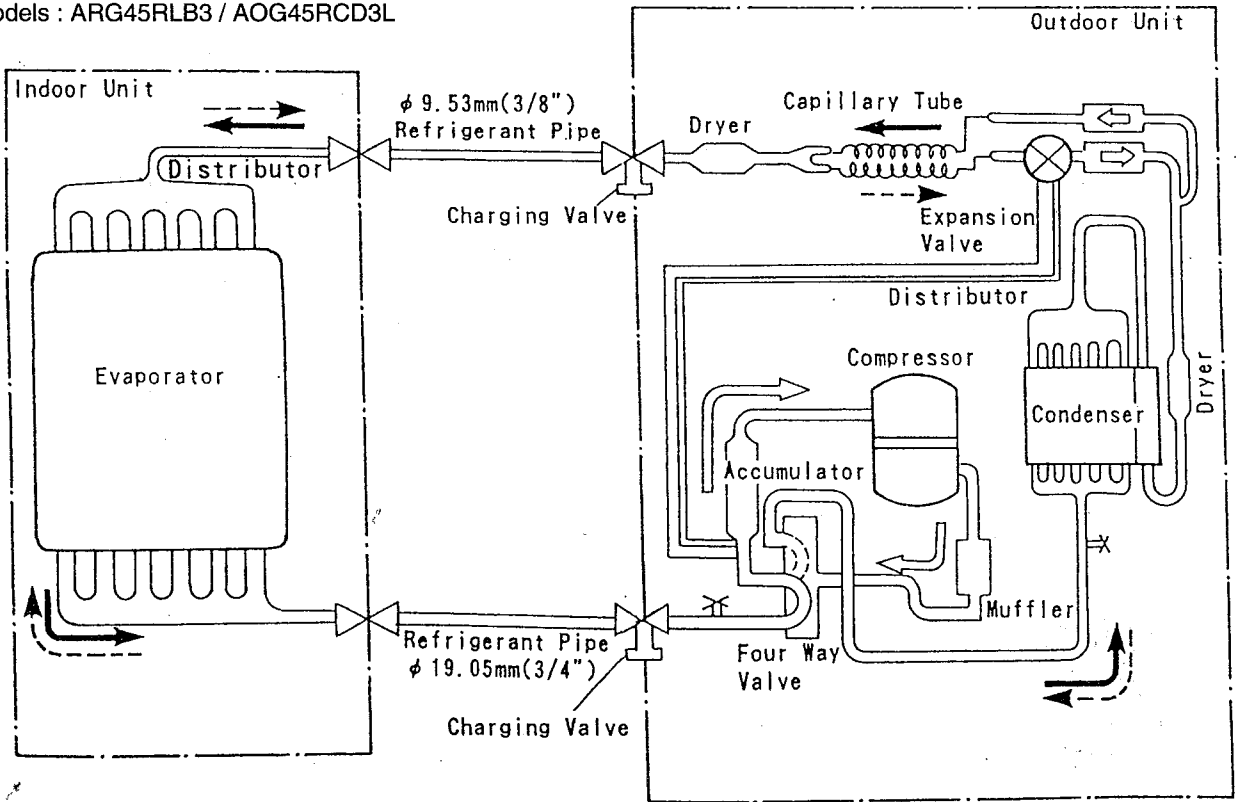
→ : Cooling

- - - - -> : Heating

Models : ARG45ALB3 / AOG45ACA3L



Models : ARG45RLB3 / AOG45RCD3L



⊗ : Flare Coupling

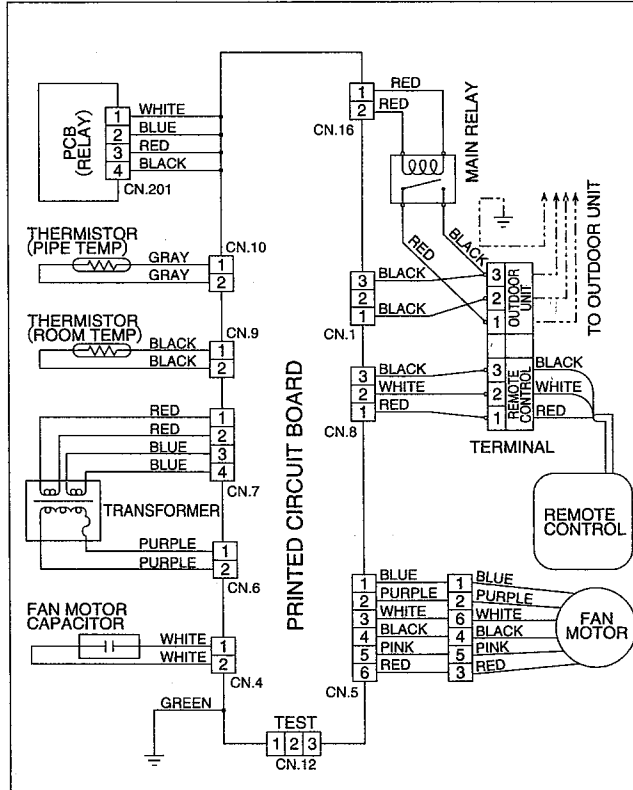
→ : Cooling

- - - → : Heating

CIRCUIT DIAGRAM

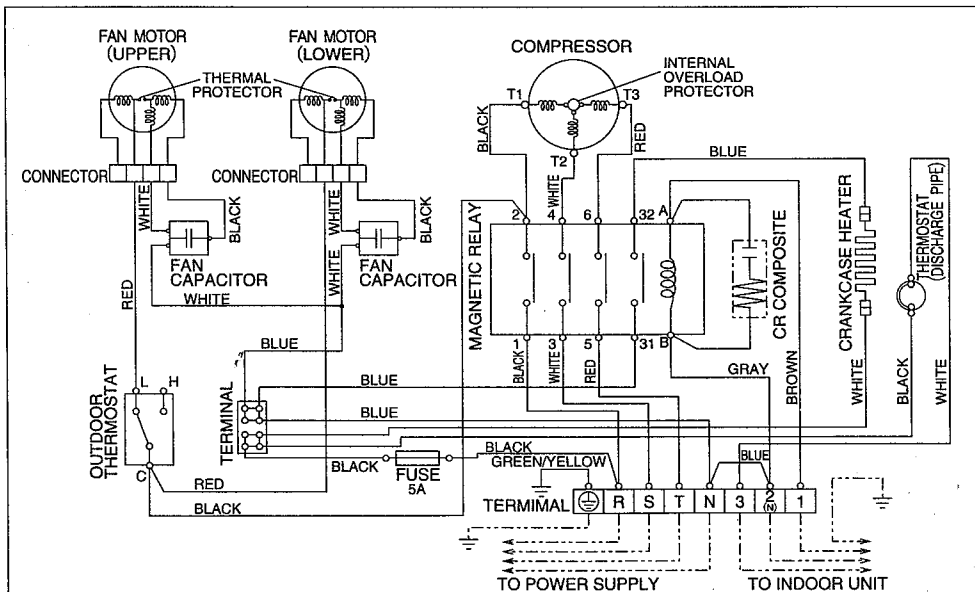
Models : ARG36ALB3 / AOG36ACA3L
 ARG45ALB3 / AOG45ACA3L

INDOOR UNIT



	ARY36ALB3	ARY45ALB3
FAN MOTOR CAPACITOR	10.0 μ F	15.0 μ F

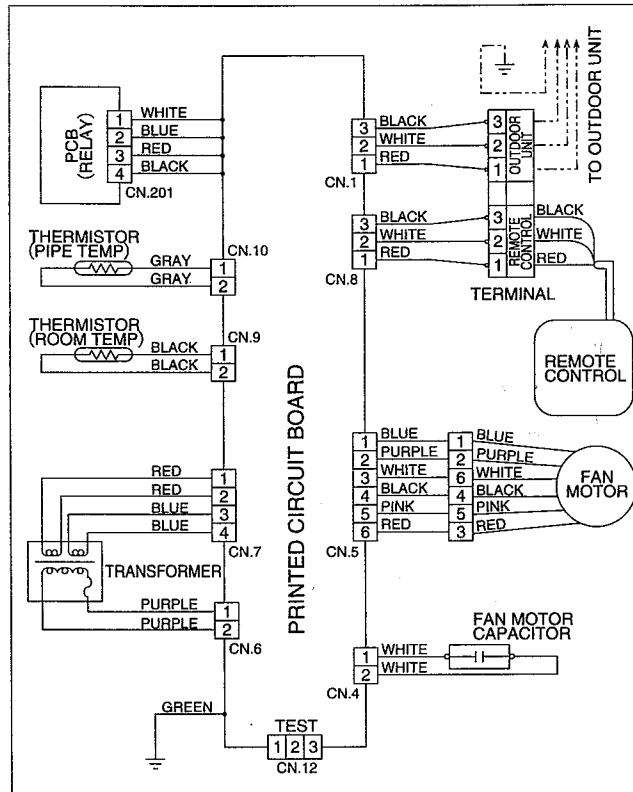
OUTDOOR UNIT



FAN MOTOR CAPACITOR	3.5 μ F
---------------------	-------------

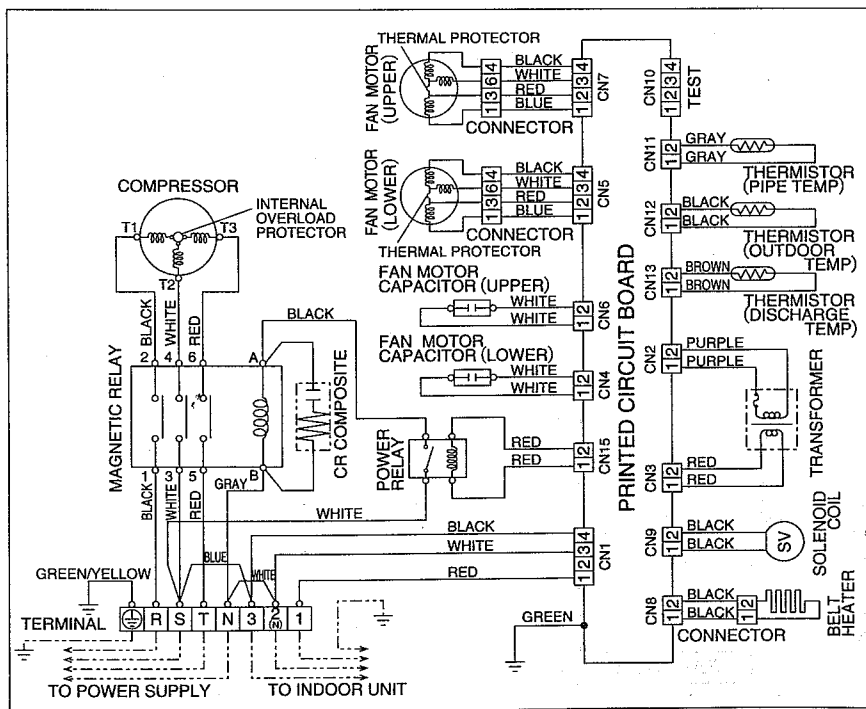
Models : ARG36RLB3 / AOG36RCD3L
 ARG45RLB3 / AOG45RCD3L

INDOOR UNIT



	ARY36RLB3	ARY45RLB3
FAN MOTOR CAPACITOR	10.0 μ F	15.0 μ F

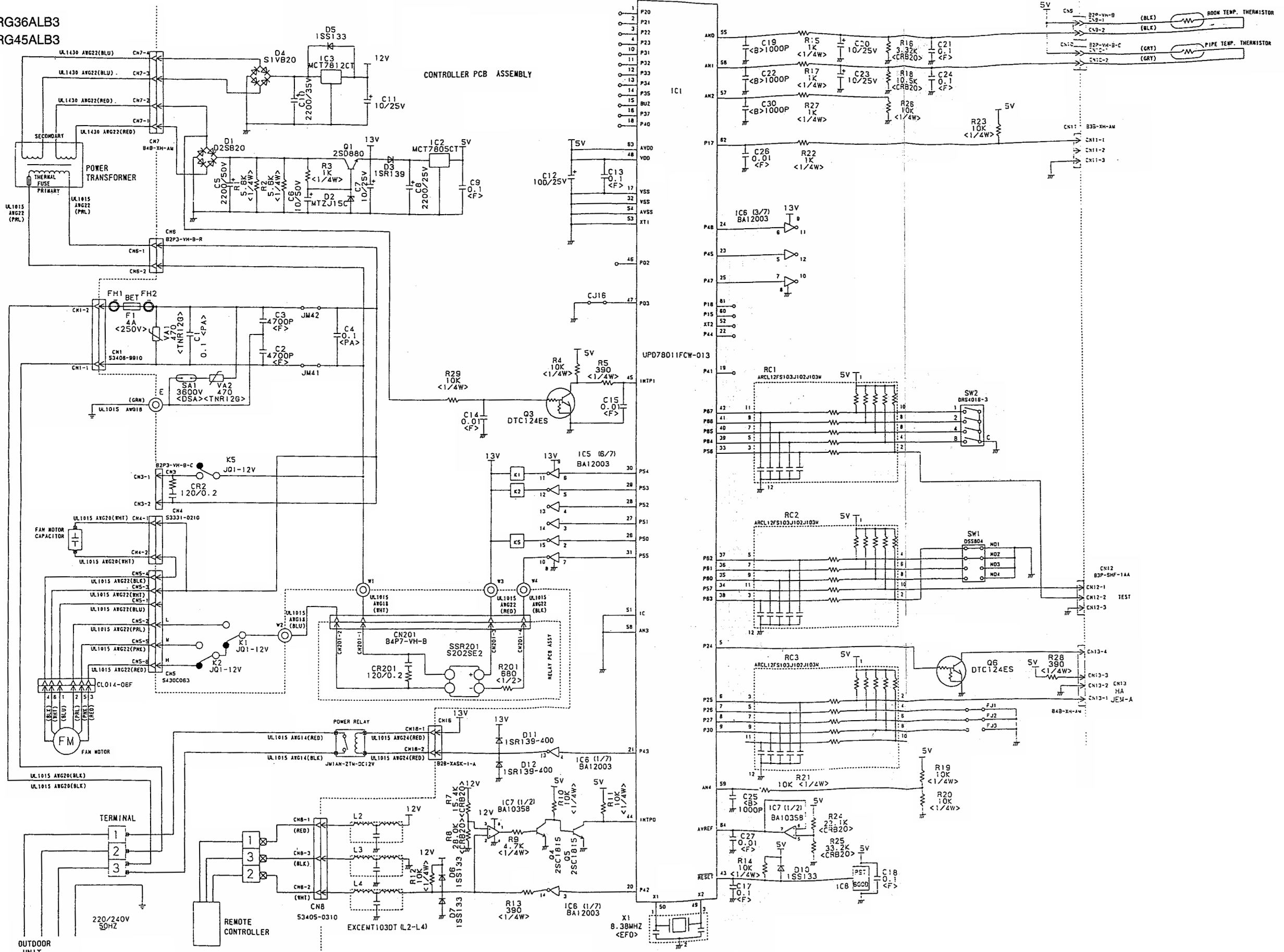
OUTDOOR UNIT



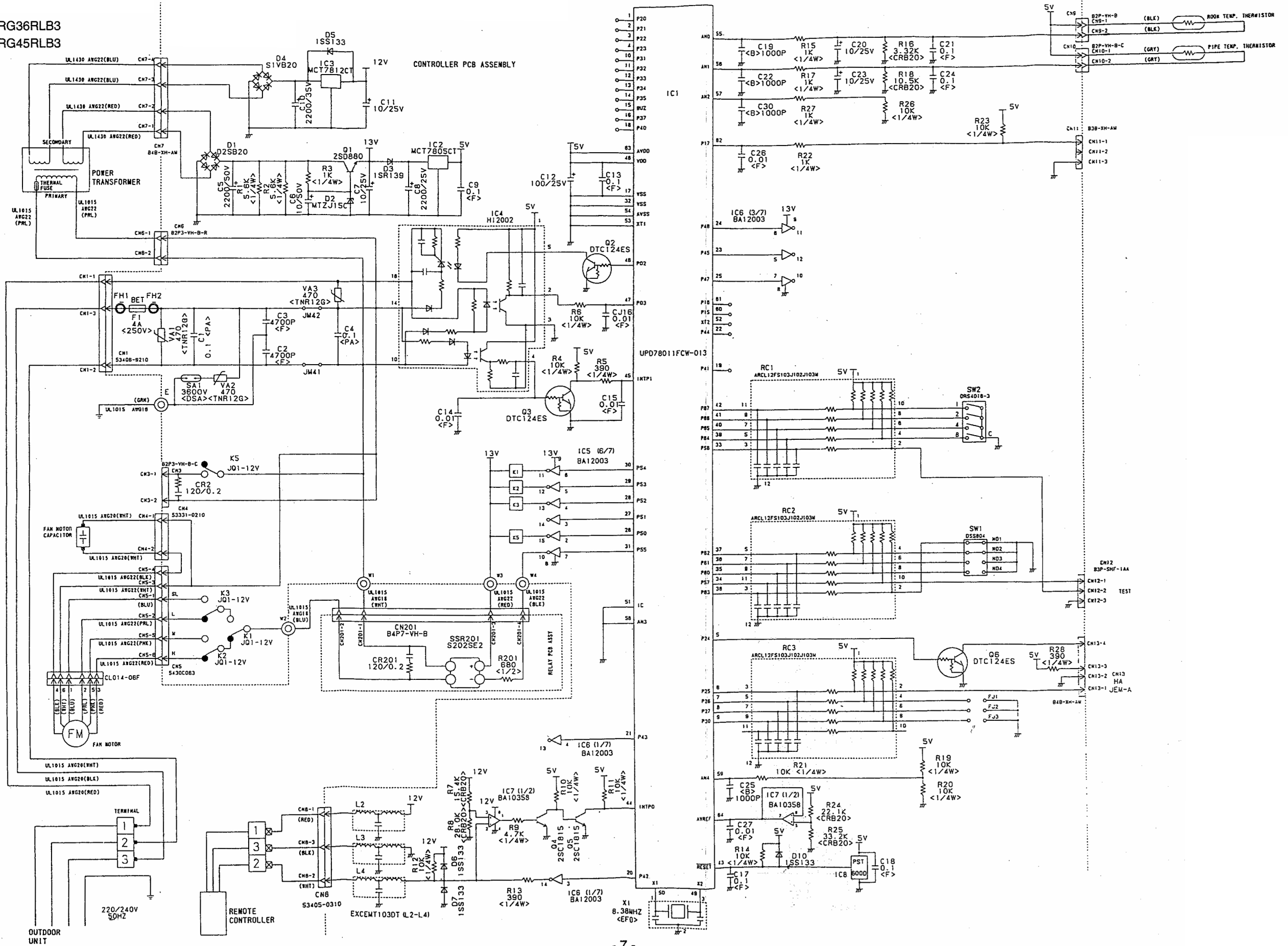
FAN MOTOR CAPACITOR	3.5 μ F
---------------------	-------------

INDOOR PRINTED CIRCUIT BOARD CIRCUIT DIAGRAM

Models : ARG36ALB3
ARG45ALB3

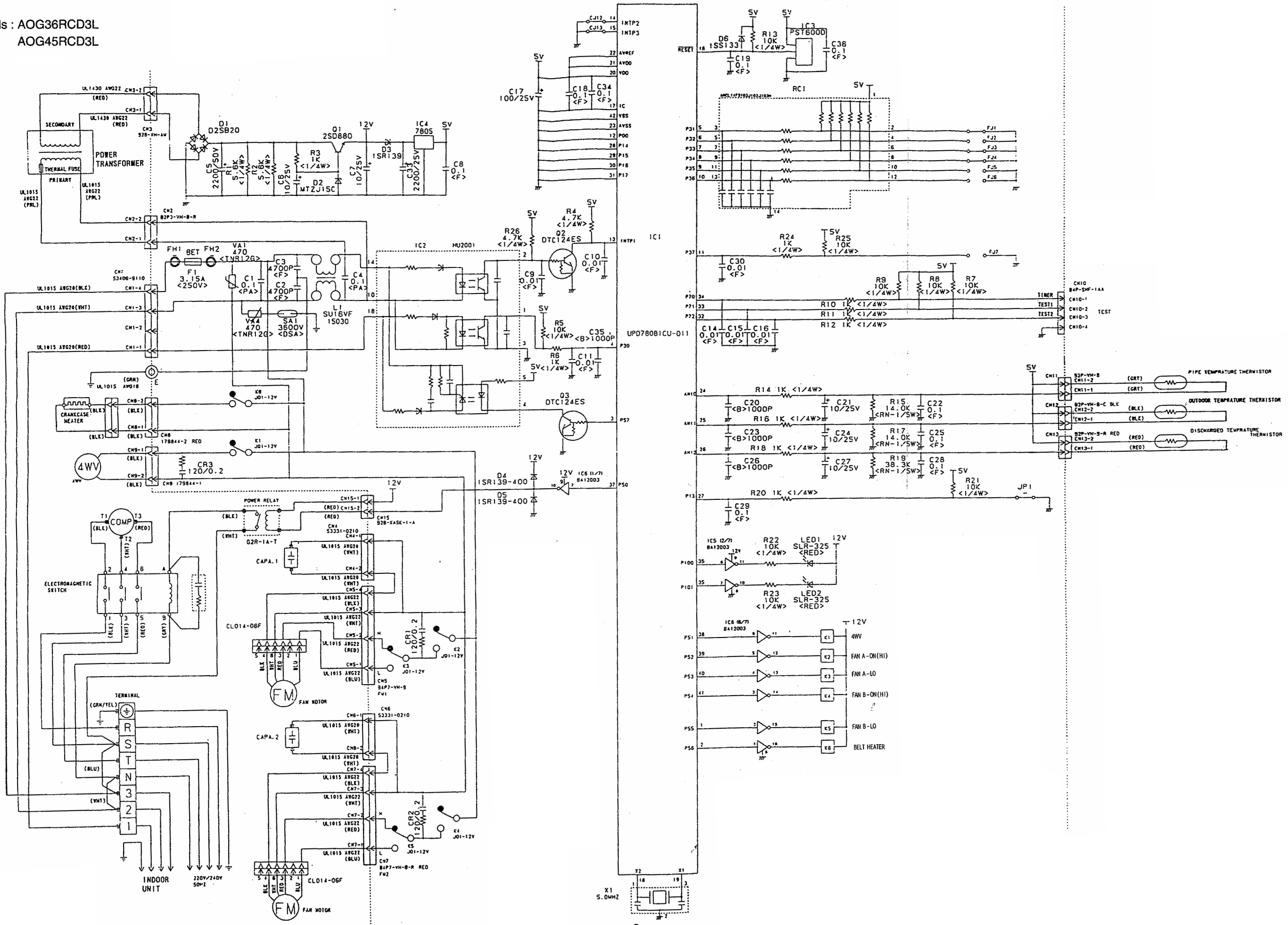


Models : ARG36RLB3
ARG45RLB3



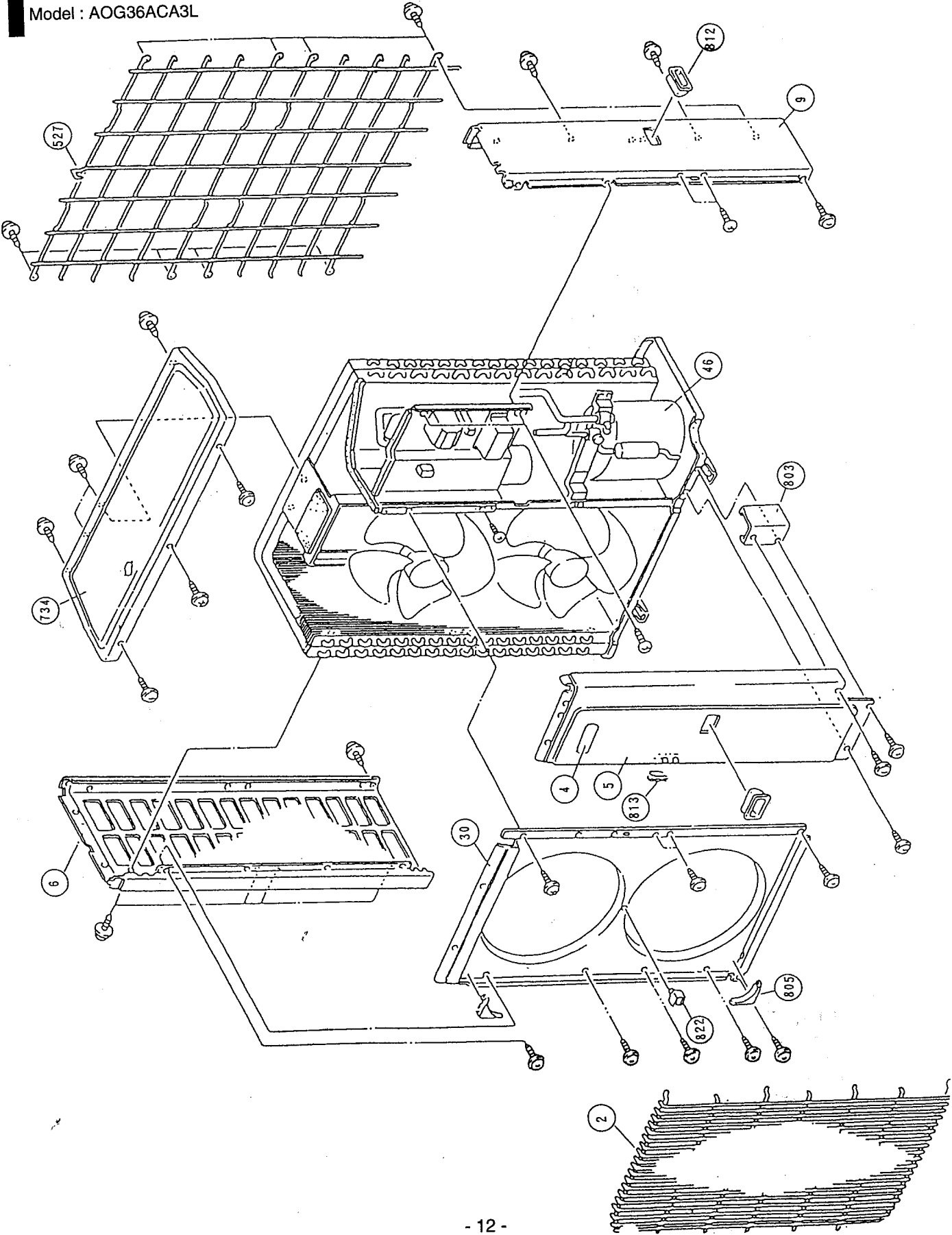
OUTDOOR PRINTED CIRCUIT BOARD CIRCUIT DIAGRAM

Models : AOG36RCD3L
AOG45RCD3L

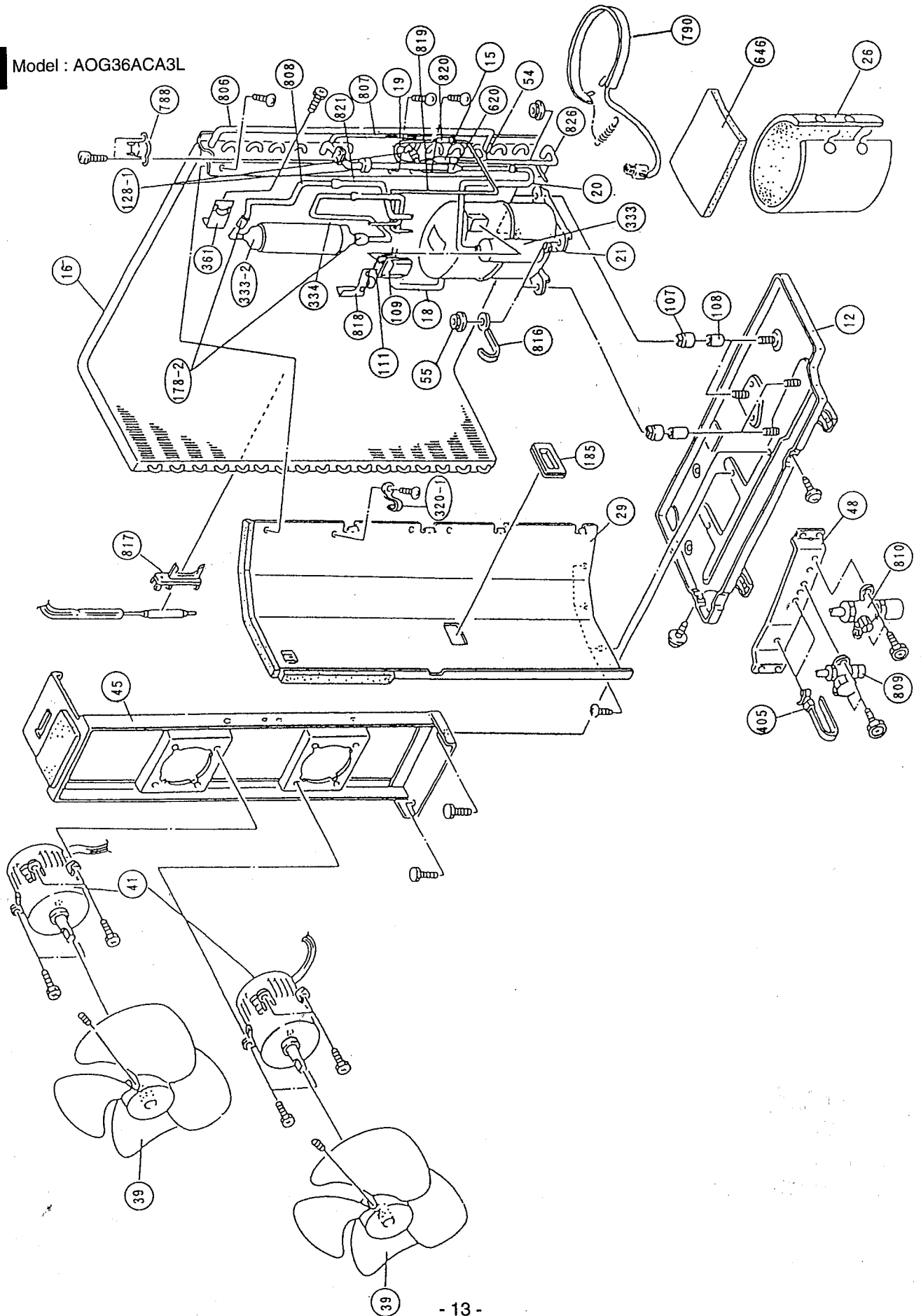


DISASSEMBLY ILLUSTRATION

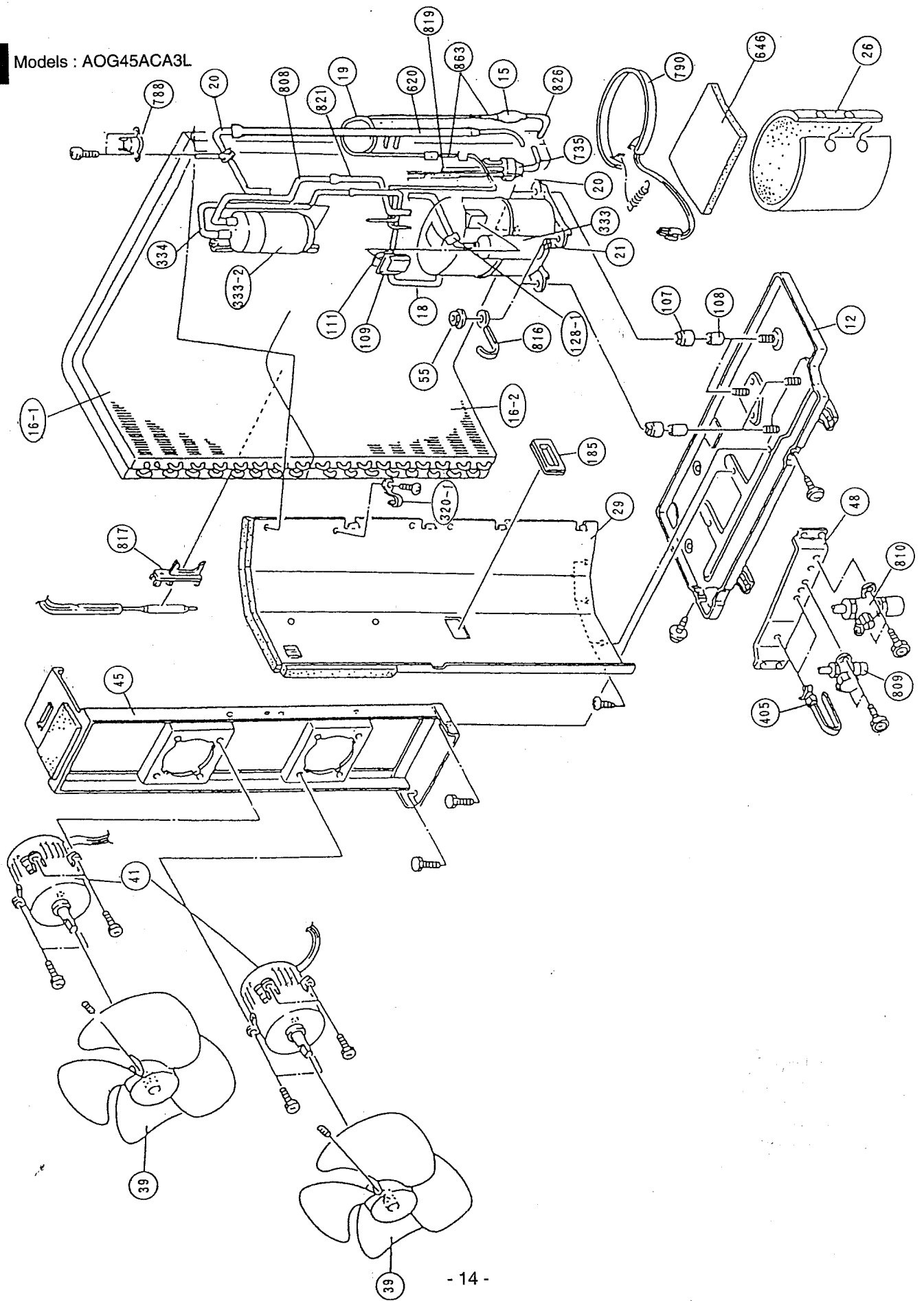
Model : AOG36ACA3L



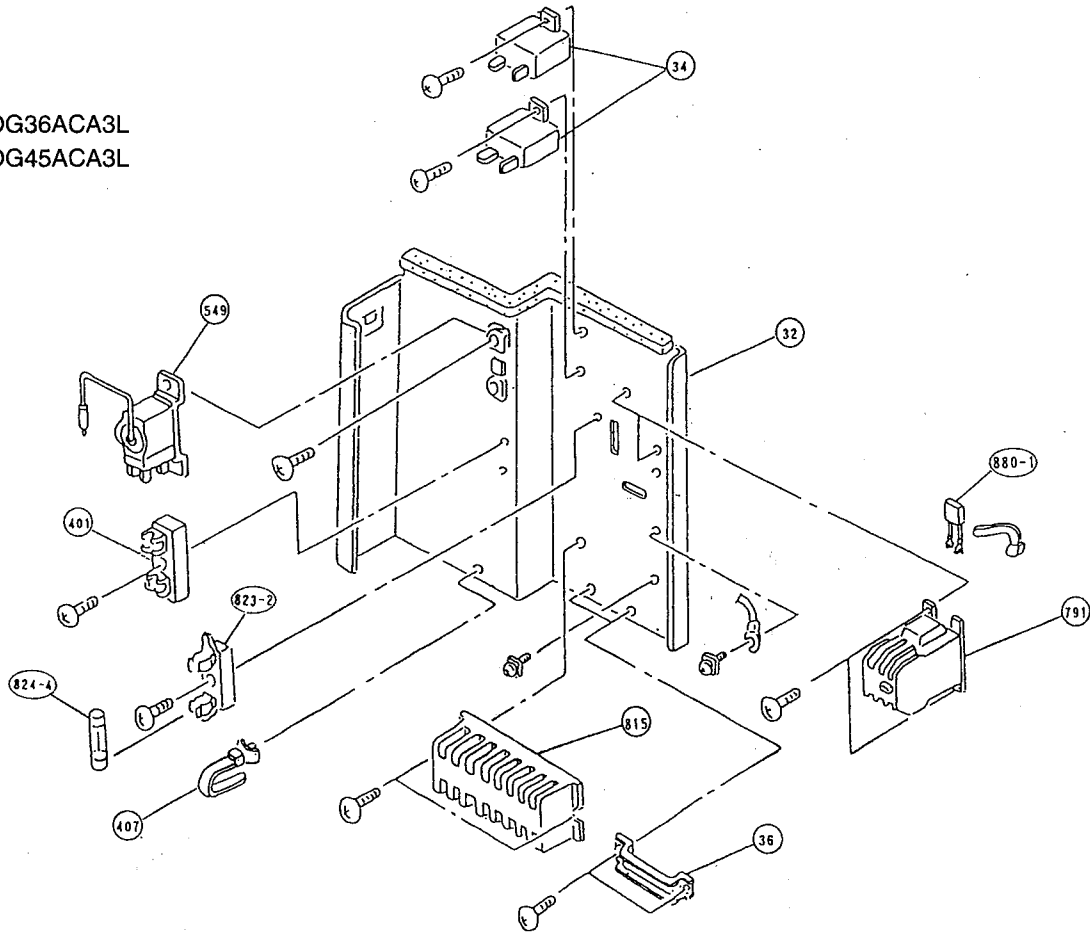
Model : AOG36ACA3L



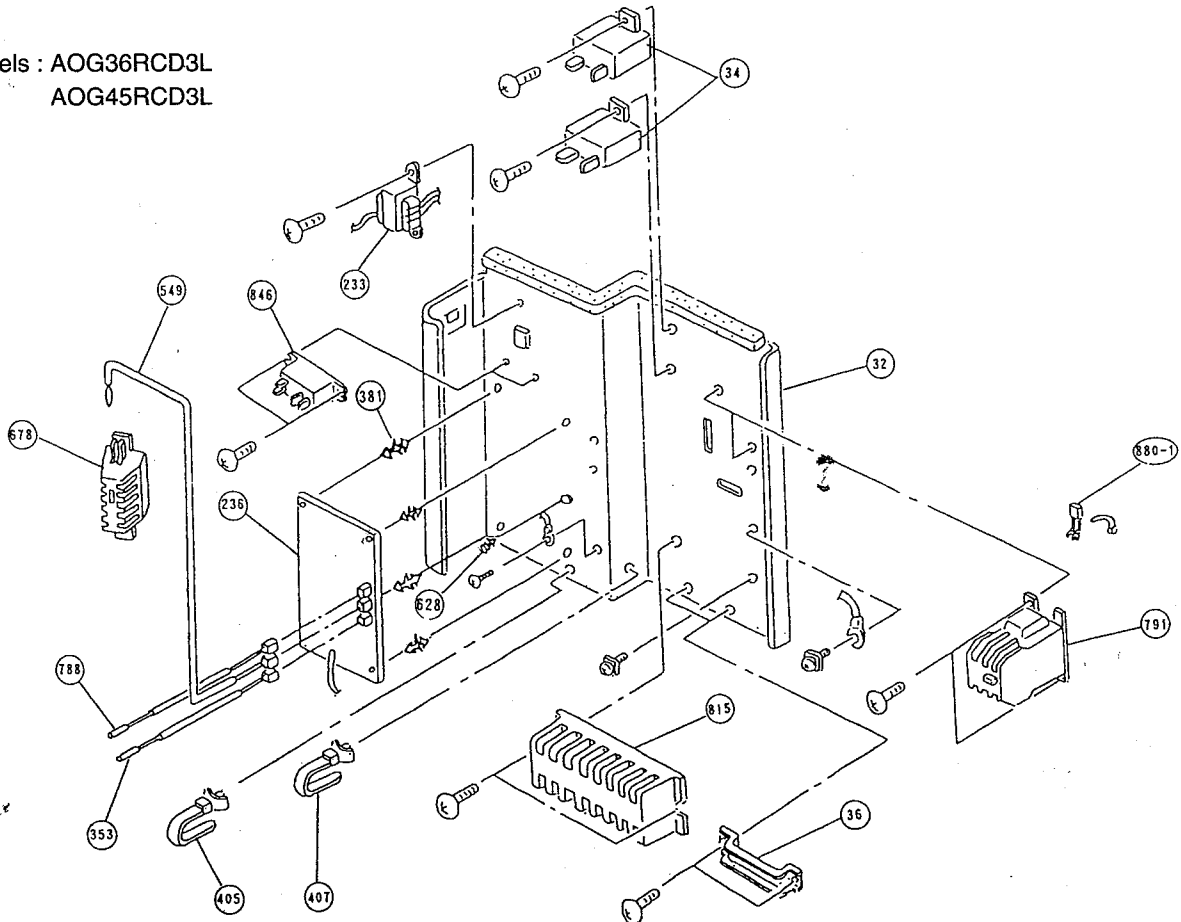
Models : AOG45ACA3L



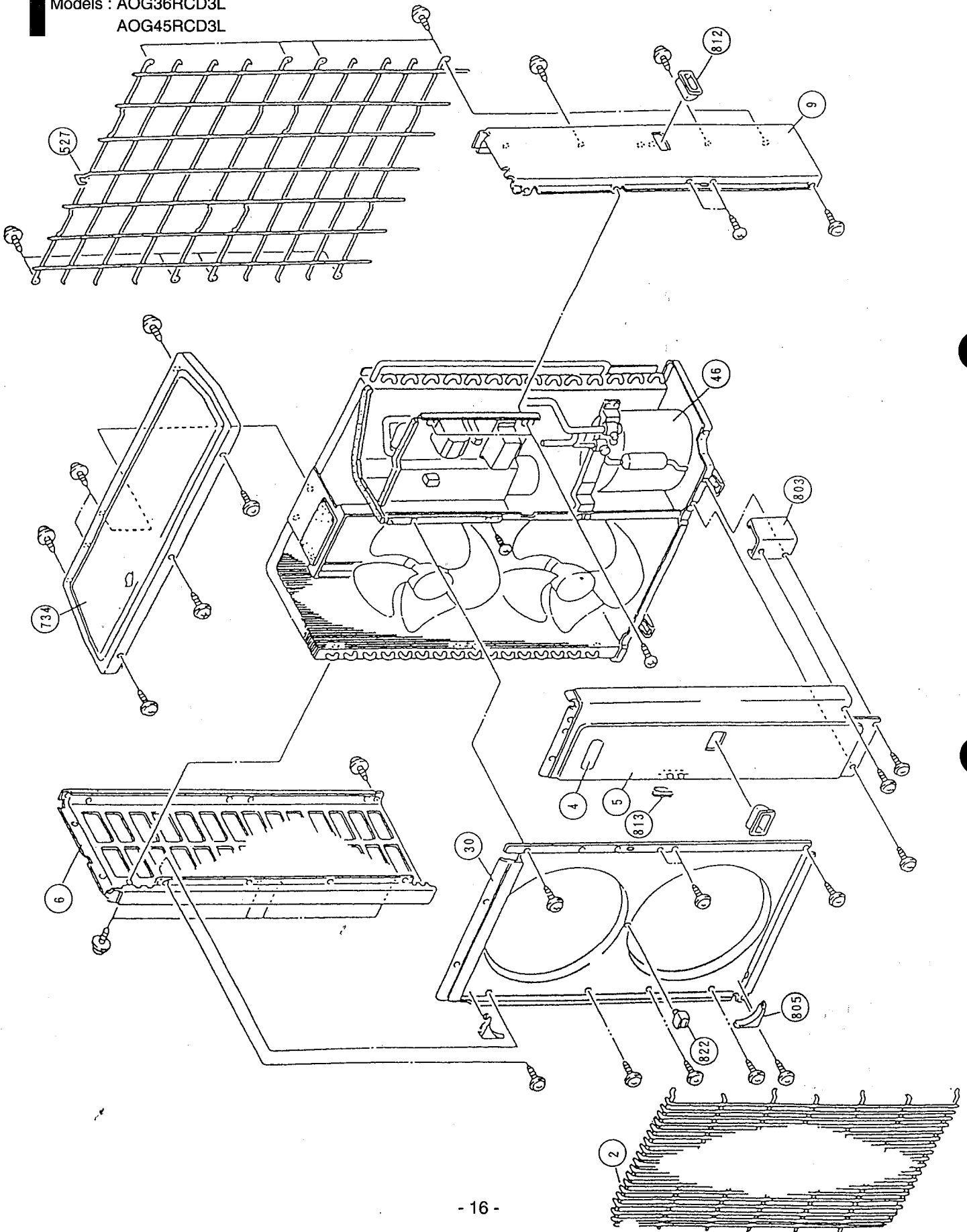
Models : AOG36ACA3L
AOG45ACA3L



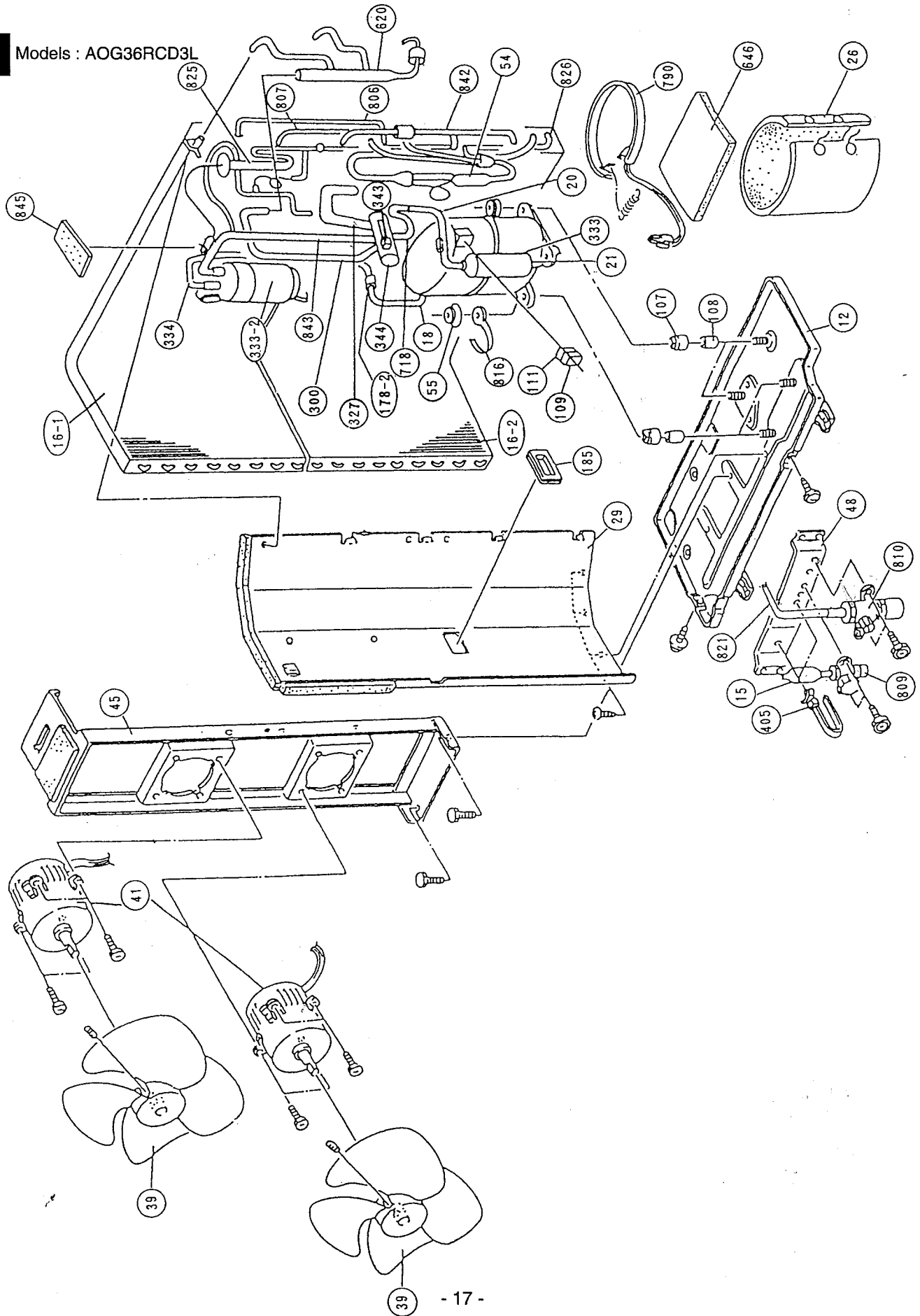
Models : AOG36RCD3L
AOG45RCD3L



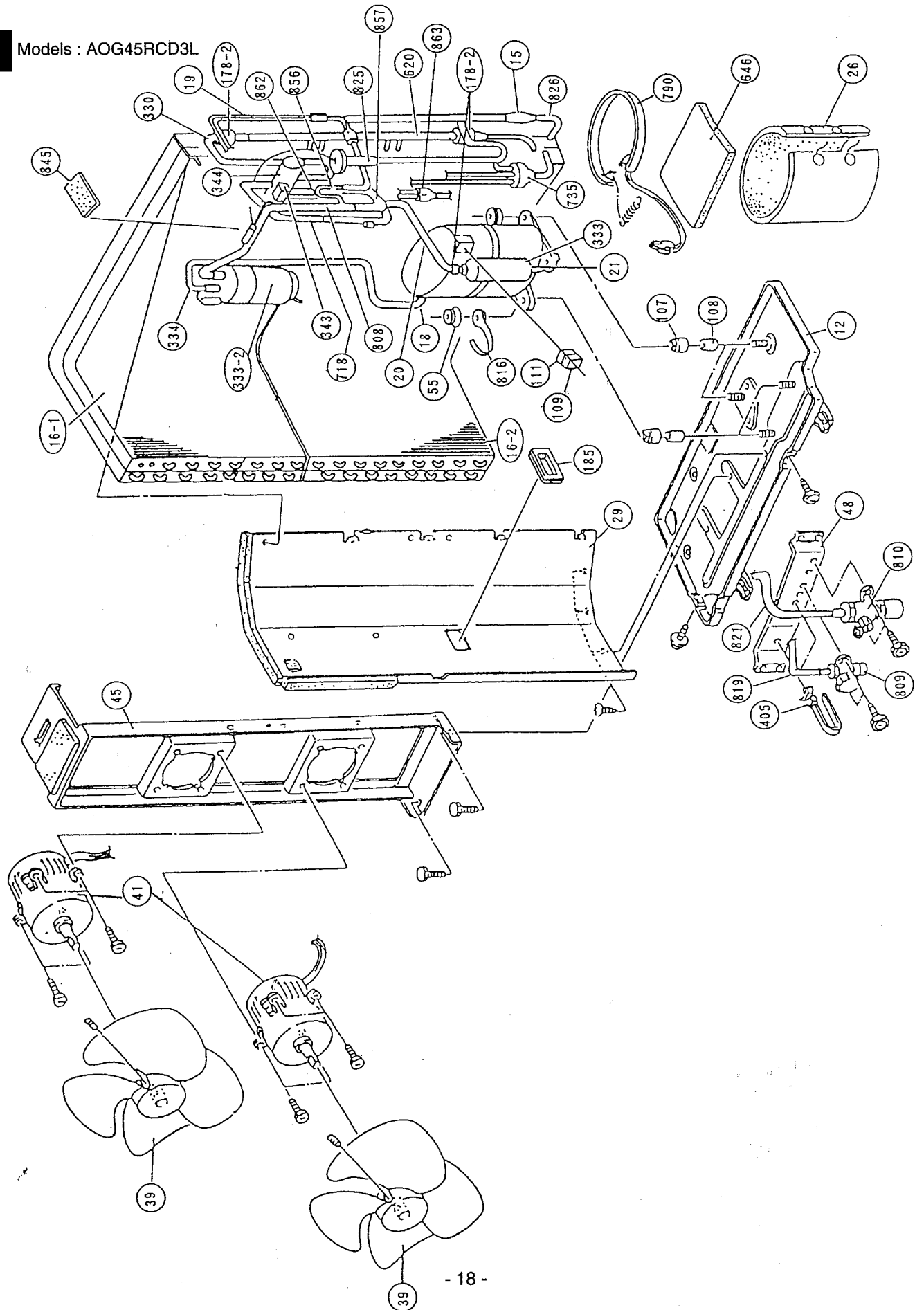
Models : AOG36RCD3L
AOG45RCD3L



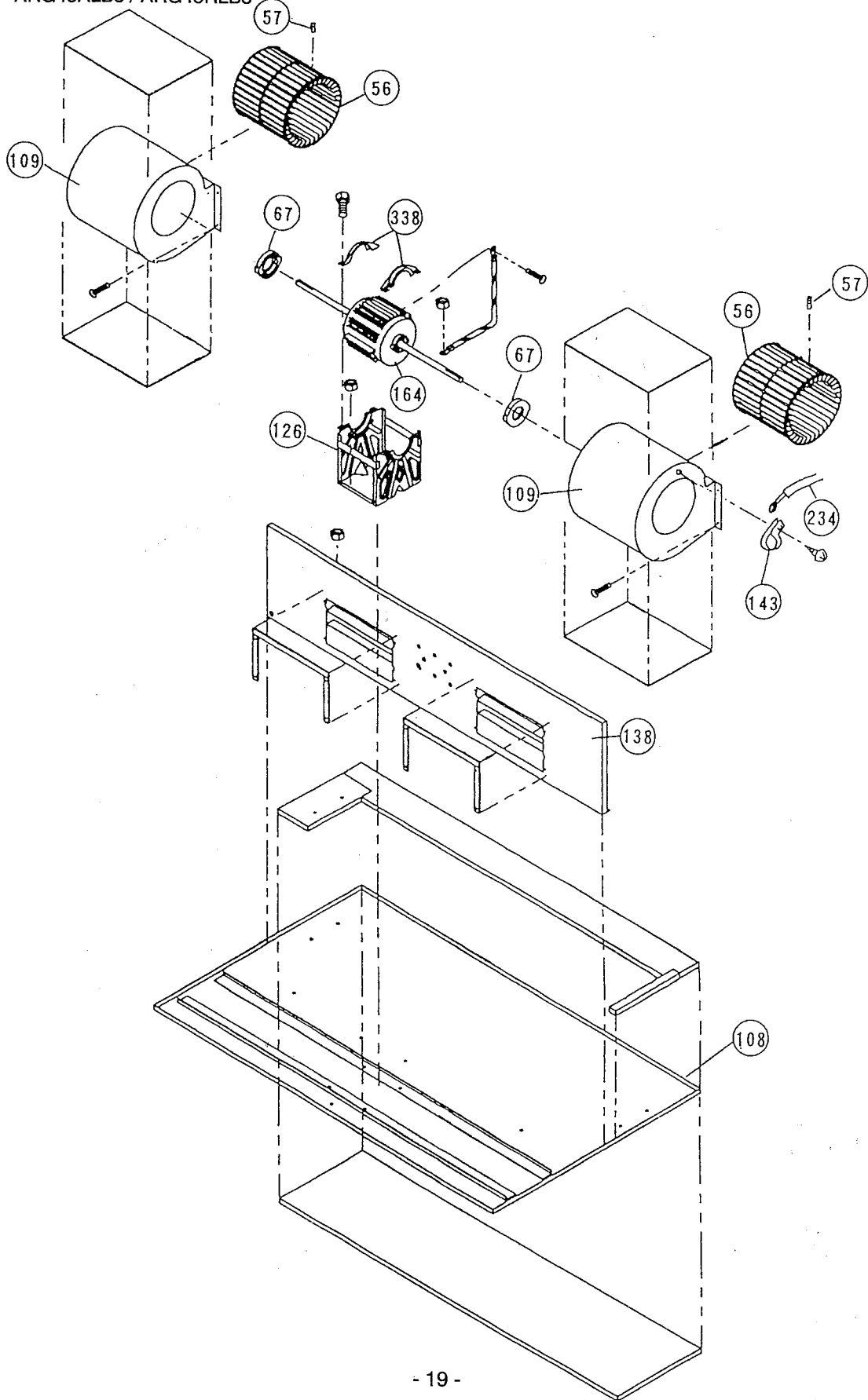
Models : AOG36RCD3L



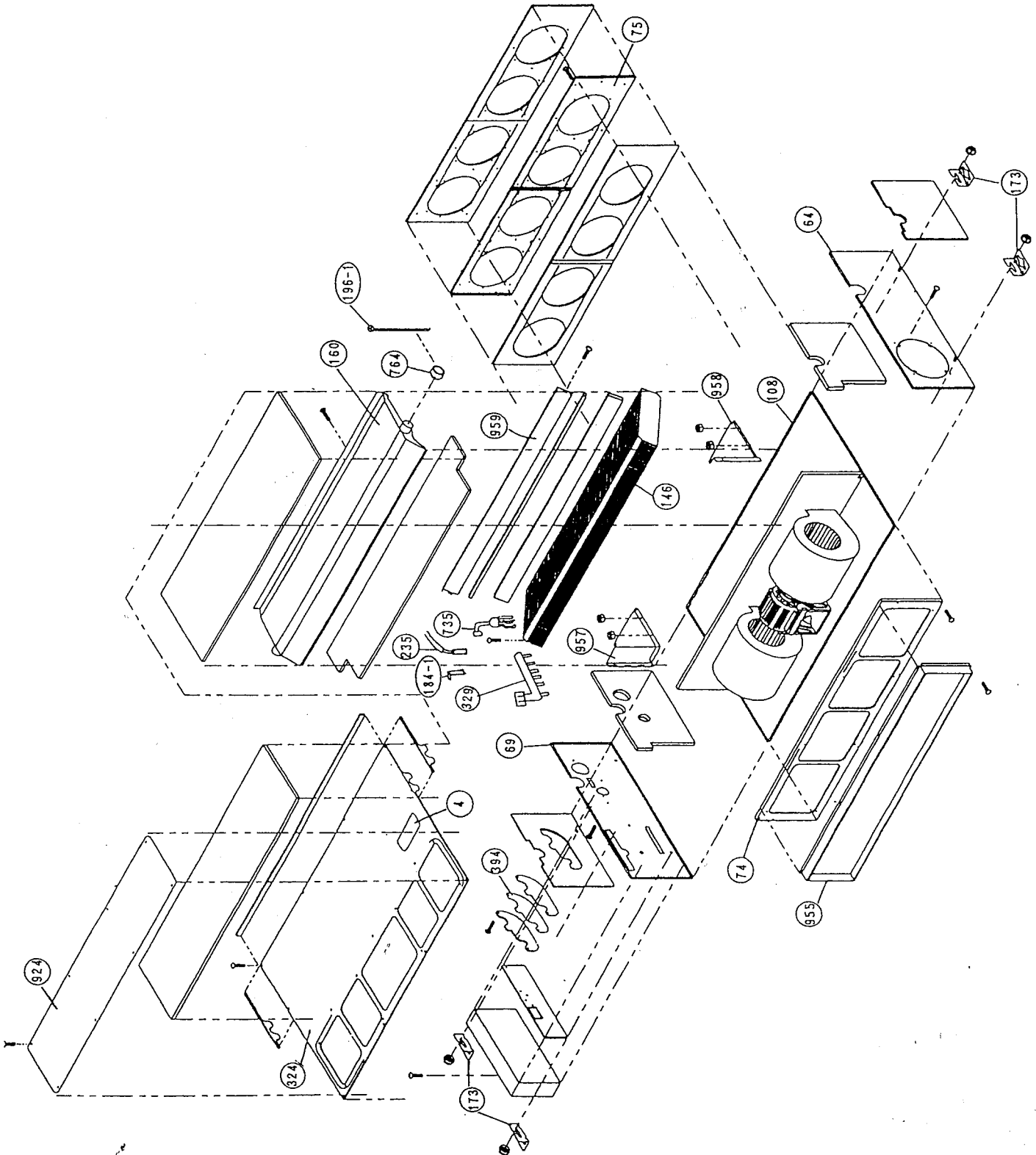
Models : AOG45RCD3L



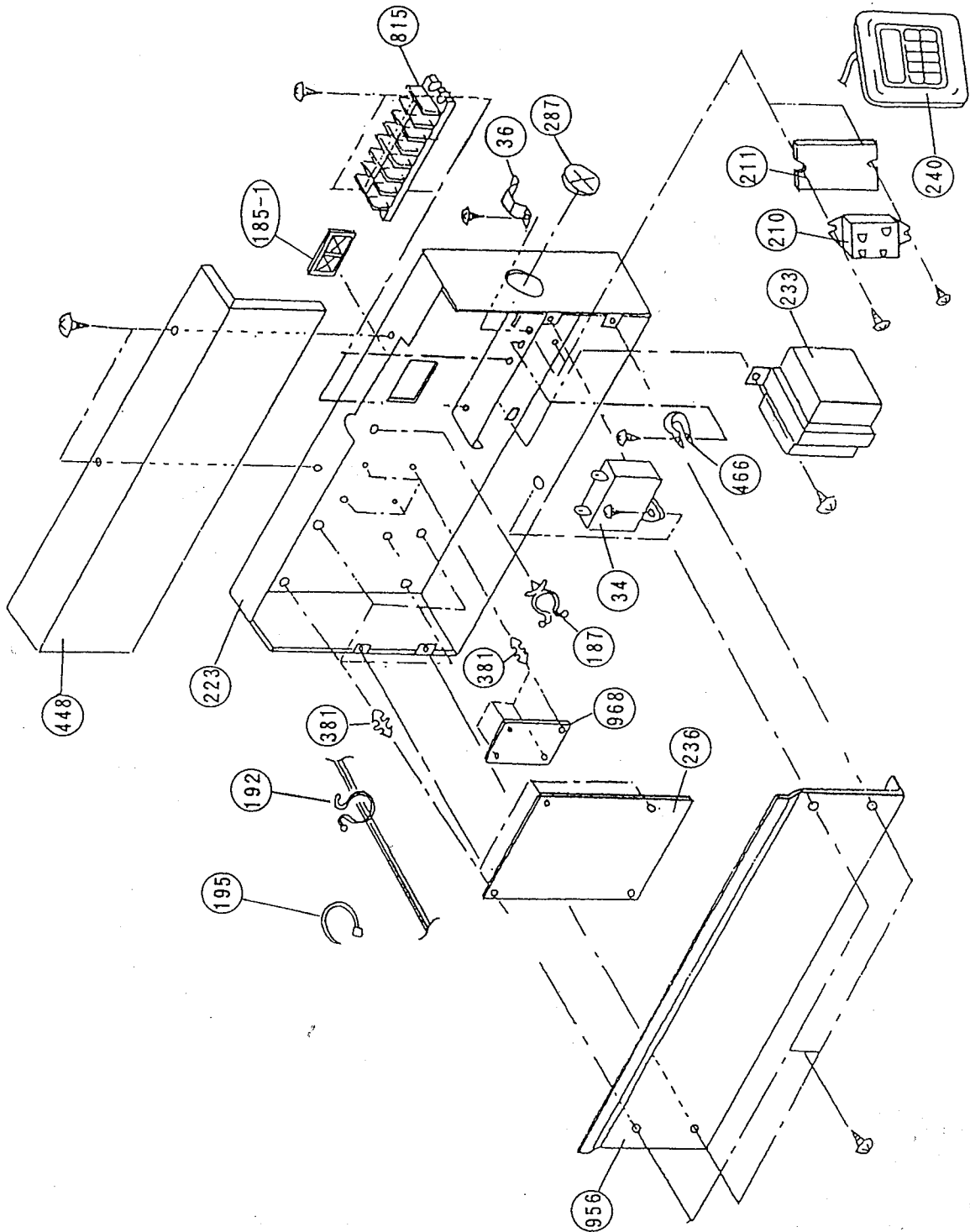
Models : ARG36ALB3 / ARG36RLB3
 ARG45ALB3 / ARG45RLB3



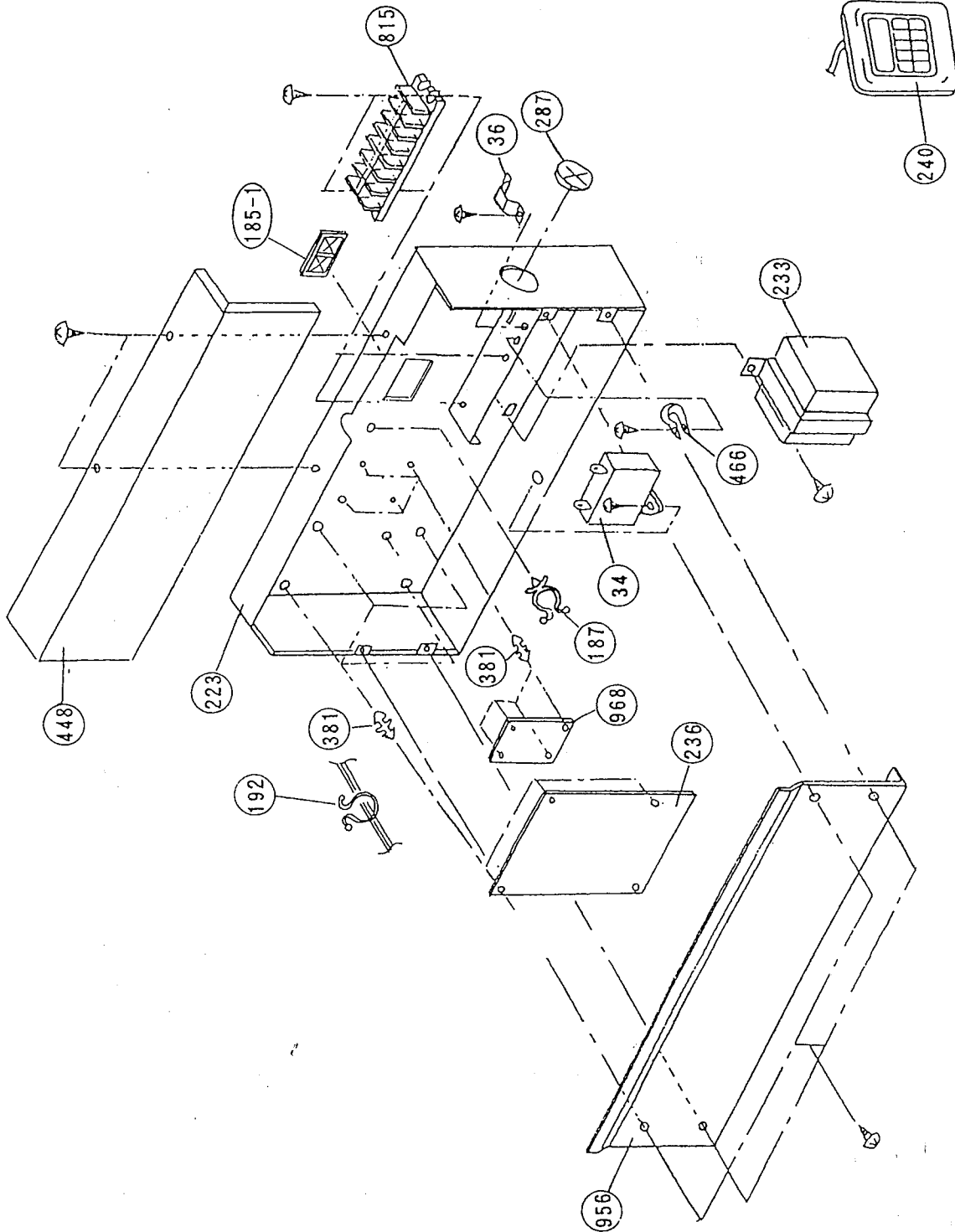
Models : ARG36ALB3 / ARG36RLB3
ARG45ALB3 / ARG45RLB3



Models : ARG36ALB3
ARG45ALB3



Models : ARG36RLB3
ARG45RLB3



PARTS LIST

When you order parts, please make a photocopy of this page and fill the number of the parts in the "Order" column.

INDOOR UNIT

Ref. No.	Description	Part No.				Ord. Q'ty
		ARG36ALB3	ARG36RLB3	ARG45ALB3	ARG45RLB3	
4	Emblem-Rear	313698088313	313698088313	313698088313	313698088313	
34	Capacitor (Fan Motor)	9700468035	9700468035	9700468042	9700468042	
36	Cord Holder Metal	9356362008	9356362008	9356362008	9356362008	
56	Sirocco Fan Assy	9356531022	9356531022	9356531022	9356531022	
57	Hex. Socket Screw	313616213202	313616213202	313616213202	313616213202	
64	Cabinet-Left Metal	9356551006	9356551006	9356551006	9356551006	
67	Rubber(Vibration-proof)	313659068604	313659068604	313659068604	313659068604	
69	Cabinet-Right Metal	9356547009	9356547009	9356547009	9356547009	
74	Intake Panel	9356537000	9356537000	9356537000	9356537000	
75	Outlet Panel Assy	9356538007	9356538007	9356538007	9356538007	
108	Base Assy	9356518009	9356518009	9356518009	9356518009	
109	Casing Assy	9356527001	9356527001	9356527001	9356527001	
126	Motor Fixing Table Assy	9356533002	9356533002	9356533002	9356533002	
138	Separate Wall	9356523003	9356523003	9356523003	9356523003	
143	Clamp NK-3N	313361274700	313361274700	313361274700	313361274700	
146	Evaporator Assy	9356524017	9356524017	9356524017	9356524017	
160	Drain Pan Assy	9356542028	9356542028	9356542028	9356542028	
164	Fan Motor Assy	9600434024	9600434024	9600434024	9600434024	
173	Hanger Bracket	9356563009	9356563009	9356563009	9356563009	
184-1	Therm. Spring-A	313728262708	313728262708	313728262708	313728262708	
185-1	Rubber Bushing	9357376004	9357376004	9357376004	9357376004	
187	Clamp No. 1219	313361271706	313361271706	313361271706	313361271706	
192	Clamp No. 062	313361271402	313361271402	313361271402	313361271402	
195	Clamp SKB-100	313361275805	313361275805	313361275805	313361275805	
196-1	Clamp SKB-3M	312300787605	312300787605	312300787605	312300787605	
210	Main Relay	9356781007	—	9356781007	—	
211	Cushion Rubber	313806328306	—	313806328306	—	
223	Control Box Metal Assy	9356558005	9356558005	9356558005	9356558005	
233	Power Transformer	9701678013	9701678013	9701678013	9701678013	
234	Thermistor Assy	9302745008	9302745008	9302745008	9302745008	
235	Thermistor Assy-Pipe	9701329076	9701329076	9701329076	9701329076	
236	Controller PCB Assy	9701705016	9701594023	9701705016	9701594023	
240	Remote Control Unit	9701673032	9701673025	9701673032	9701673025	
287	Cap (Power)	9352173011	9352173011	9352173011	9352173011	
324	Top Plate	9356546002	9356546002	9356546002	9356546002	
329	Coupling Pipe Assy	9357005003	9357005003	9357005003	9357005003	
338	Motor Fixture	9356536003	9356536003	9356536003	9356536003	
381	Locking Spacer	313209391506	313209391506	313209391506	313209391506	
394	Pipe Fixing Plate	9356554007	9356554007	9356554007	9356554007	
448	Control Box Metal-B	9356560008	9356560008	9356560008	9356560008	
466	Clamp NK-4N	313714328805	313714328805	313714328805	313714328805	
735	Distributor Assy	9357004006	9357004006	9357004006	9357004006	
764	Drain Cap	9356541007	9356541007	9356541007	9356541007	
815	Terminal-7P	9358660102	9358660102	9358660102	9358660102	
924	Intake Seal Plate	9356553000	9356553000	9356553000	9356553000	
955	Square Flange Assy	9356555004	9356555004	9356555004	9356555004	
956	Control Box Metal-E	9356900002	9356900002	9356900002	9356900002	
957	Eva. Fixing Plate-R	9356521009	9356521009	9356521009	9356521009	
958	Eva. Fixing Plate-L	9356522006	9356522006	9356522006	9356522006	
959	Eva. Seal Plate	9356540000	9356540000	9356540000	9356540000	
968	Relay PCB Assy	9701594030	9701594030	9701594030	9701594030	

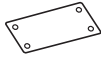








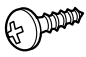

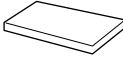
OUTDOOR UNIT

Ref. No.	Description	Part No.		Ord. Q'ty
		AOG36ACA3L	AOG45ACA3L	
2	Fan Cover	9352159015	9352159015	
4	Emblem-Rear "GENERAL"	313791088308	313791088308	
5	Cabinet-A, Painted	9352146015	9352146015	
6	Cabinet-C, Painted	9352149016	9352149016	
9	Cabinet-B, Painted	9352147012	9352147012	
12	Base Assy, Painted	9352136016	9352136016	
15	Dryer	9300589031	9353789006	
16	Condenser Assy	9352128011	—	
16-1	Condenser-A Assy	—	9355338011	
16-2	Condenser-B Assy	—	9353363008	
18	Suction Pipe	9352286001	9353200006	
19	Capillary Tube	9352439001	9353644008	
20	Discharge Pipe Assy	9352288005	9353620002	
21	Discharge Pipe-B	9352289002	9353209009	
26	Compressor Cover-A	9352416002	9353367006	
29	Separate Wall	9355277013	9355277013	
30	Blower Cover, Painted	9352151019	9352151019	
32	Control Box Metal	9352134012	9352134012	
34	Capacitor (Fan Motor)	9357965024	9357965024	
36	Cord Holder Metal	9356934007	9356934007	
39	Propeller Fan Assy	9300855013	9300855013	
41	Fan Motor Assy-Out	9600266014	9600266014	
45	Bracket (Motor) Assy	9352141003	9352141003	
46	Compressor Assy	9352412004	9353157003	
48	Bracket (Coupler) Assy	9355281010	9355281010	
54	Condensing Pipe-A	9352296000	—	
55	Special Nut M8 (For Comp.)	313252257701	313252257701	
107	Rubber Seat-A(For Comp.)	9351875039	9351875039	
108	Sleeve-A (For Comp.)	9351875046	9351875046	
109	Terminal Cover (For Comp.)	9351875053	9351875053	
111	Terminal Packing (For Comp.)	9351875060	9351875060	
128-1	Rubber (Discharge Pipe)	313155086308	313155086308	
178-2	Capillary Holder Rubber	313394274808	—	
185	Rubber Bushing	313005066051	313005066051	
320-1	Wire Clamp Metal	313483219905	313483219905	
333	Accumulator	9350363018	9350363018	
333-2	Accumulator Assy (B)	9301942019	9357987002	
334	Suction Pipe-B	9352557002	9352287008	
361	Accumulator Support Assy	9355351003	—	
401	Terminal-2P	9701971015	9701971015	
405	Clamp No. 1763	313816345304	313816345304	
407	Clamp(Cable) No. 1259	313739340109	313739340109	
527	Protection Net	9352163012	9352163012	
549	Thermostat-Outdoor	9352426001	9352426001	
620	Inlet Pipe (Cond.) Assy	9355316019	9353183002	
646	Compressor Cover-B	313986355101	9353368003	
734	Cabinet Top Plate	9352161018	9352161018	
735	Distributor Assy	—	9353187000	
788	Thermostat-Overheat	9354061002	9354061002	
790	Belt Heater	9352415005	9353359001	
791	Magnet Relay	9352552007	9352552007	
803	Cabinet-D, Painted	9352150012	9352150012	
805	Blower Cover Corner	9352160011	9352160011	
806	Cond. Pass Pipe-A	9352294000	—	
807	Cond. Pass Pipe-B	9353090010	—	
808	Inlet Pipe (Accumulator)	9352556005	9352285004	
809	Ball Valve-A	9357976006	9357976006	
810	Ball Valve-B	9357982007	9357982007	
812	Grip	9352157004	9352157004	
813	Cabinet Hook	9352148002	9352148002	
815	Terminal-8P	9358640029	9358640029	
816	Wire Clamp Metal	313584219902	313584219902	
817	Thermostat Fixture	9352164019	9352164019	
818	Accumulator Support-B	9355350006	—	
819	Valve-A Coupl. Pipe	9352298004	—	
820	Joint Pipe (Capillary)	9352299001	—	
821	Joint Pipe(Valve-B) Assy	9352284007	9352284007	
822	Fan Cover Fixture-A	9352158018	9352158018	
823-2	Fuse Holder	0500063024	0500063024	
824-4	Fuse	0600222529	0600222529	
826	Condensing Pipe-B	9352297007	9353215000	
863	Joint Pipe (Capillary)-B	—	9353206008	
880-1	Network	9700987017	9700987017	



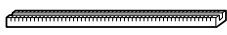
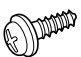



Ref. No.	Description	Part No.		Ord. Q'ty
		AOG36RCD3L	AOG45RCD3L	
2	Fan Cover	9352159015	9352159015	
4	Emblem-Rear "GENERAL"	313791088308	313791088308	
5	Cabinet-A, Painted	9352146015	9352146015	
6	Cabinet-C, Painted	9352149016	9352149016	
9	Cabinet-B, Painted	9352147012	9352147012	
12	Base Assy, Painted	9352136016	9352136016	
15	Dryer	9353789006	9353789006	
16-1	Condenser-A Assy	9353023001	9355338011	
16-2	Condenser-B Assy	9353024008	9353363008	
18	Suction Pipe	9352286001	9353200006	
19	Capillary Tube	—	9353373007	
20	Discharge Pipe Assy	9357362007	9357359007	
21	Discharge Pipe-B	9352289002	9353209009	
26	Compressor Cover-A	9352416002	9353367006	
29	Separate Wall	9355277013	9355277013	
30	Blower Cover, Painted	9352151019	9352151019	
32	Control Box Metal	9352134012	9352134012	
34	Capacitor (Fan Motor)	9357965024	9357965024	
36	Cord Holder Metal	9356934007	9356934007	
39	Propeller Fan Assy	9300855013	9300855013	
41	Fan Motor Assy-Out	9600266014	9600266014	
45	Bracket (Motor) Assy	9352141003	9352141003	
46	Compressor Assy	9352412004	9353157003	
48	Bracket (Coupler) Assy	9355281010	9355281010	
54	Condensing Pipe-A	—	—	
54	Condensing Pipe Assy	9357337005	—	
55	Special Nut M8 (For Comp.)	313252257701	313252257701	
107	Rubber Seat-A(For Comp.)	9351875039	9351875039	
108	Sleeve-A (For Comp.)	9351875046	9351875046	
109	Terminal Cover (For Comp.)	9351875053	9353360007	
111	Terminal Packing (For Comp.)	9351875060	9353361004	
178-2	Capillary Holder Rubber	313394274808	313394274808	
185	Rubber Bushing	313005066051	313005066051	
233	Power Transformer	9701549016	9701549016	
236	Controller PCB Assy	9701936014	9701936014	
300	Suction Pipe-C	9352759000	—	
327	Suction Pipe-A	9352754005	—	
330	Inlet Pipe(Condenser)-A	—	9353310002	
333	Accumulator	9350363018	9350363018	
333-2	Accumulator Assy (B)	9357987002	9357987002	
334	Suction Pipe-B	9352287008	9352287008	
343	Solenoid Coil	9359616108	9359616108	
344	4-Way Valve	9353055002	9353532008	
353	Thermistor Assy-Pipe	9701330010	9701330010	
381	Locking Spacer	313209391506	313209391506	
405	Clamp No. 1763	313816345304	313816345304	
407	Clamp(Cable) No. 1259	313739340109	313739340109	
527	Protection Net	9352163012	9352163012	
549	Thermostat Assy-Outdoor	9357328010	9357328010	
620	Inlet Pipe (Cond.) Assy	9352741005	9353183002	
628	Locking Spacer-B	313005446558	313005446558	
646	Compressor Cover-B	313986355101	9353368003	
678	Bracket (Thermistor)	313557406106	313557406106	
718	Discharge Pipe-C	9352763007	9353211002	
734	Cabinet Top Plate	9352161018	9352161018	
735	Distributor Assy	—	9353187000	
788	Thermistor-Discharge	9358337028	9358337028	
790	Belt Heater	9352415005	9353359001	
791	Magnet Relay	9352552007	9352552007	
803	Cabinet-D, Painted	9352150012	9352150012	
805	Blower Cover Corner	9352160011	9352160011	
806	Cond. Pass Pipe-A	9352294000	—	
807	Cond. Pass Pipe-B	9353400005	—	
807	Cond. Pass Pipe-B	9354112001	—	
808	Inlet Pipe (Accumulator)	—	9353180001	
809	Ball Valve-A	9357976006	9357976006	
810	Ball Valve-B	9357982007	9357982007	
812	Grip	9352157004	9352157004	
813	Cabinet Hook	9352148002	9352148002	
815	Terminal-8P	9358640029	9358640029	
816	Wire Clamp Metal	313584219902	313584219902	
819	Joint Pipe (Valve-A)	—	9353904003	
821	Joint Pipe(Valve-B) Assy	9352284007	9353307002	
822	Fan Cover Fixture-A	9352158018	9352158018	
825	Expansion Valve Assy	9353001009	9353311009	
826	Condensing Pipe-B	9352990007	9353215000	
842	Cond. Pass Pipe-C	9354111004	—	
843	Suction Pipe-B Assy	9352755002	—	
845	Insulation (Exp. Valve)	9353070012	9353370006	
846	Relay	9304375005	9304375005	
856	Equalizing Pipe-C	—	9353304001	
857	Inlet Pipe(Accumulator)B	—	9353199003	
862	Valve-B Coupl. Pipe	—	9353309006	
863	Joint Pipe (Capillary)-B	—	9353206008	
880-1	Network	9700987017	9700987017	

STANDARD ACCESSORIES

INDOOR UNIT ACCESSORIES

Name and Shape	Q'ty	Application	Parts No.	
			ARG36ALB3 ARG45ALB3	ARG36RLB3 ARG45RLB3
Installation template 	1	For positioning the indoor unit	9357036007	9357036007
Hanger 	4	For suspending the indoor unit from ceiling	9356563009	9356563009
Special nut A (large flange) 	4	For suspending the indoor unit from ceiling	313005446653	313005446653
Special nut B (small flange) 	4		313005446759	313005446759
Coupler heat insulation (large) 	2	For indoor side pipe joint (large pipe)	9350716029	9350716029
Coupler heat insulation (small) 	1	For indoor side pipe joint (small pipe)	9352766015	9352766015
Nylon fastener 	1	For fixing the drain hose	312300787605	312300787605
Remote control unit 	1		9701673032	9701673025
Remote control unit cord clamp 	10	For installing the remote controller cord	313714181904	313714181904
Tapping screw (flush heads) 	10	For installing the remote control unit cord clamp	301141153027	301141153027
Auxiliary pipe assembly 	1	For wiring conduit (gas side) connection	9357038001	9357038001
Drain hose insulation 	1	Insulates the drain hose and vinyl hose connection	313806217708	313806217708

OUTDOOR UNIT ACCESSORIES

Name and Shape	Q'ty	Application	Parts No.	
			AOG36ACA3L AOG45ACA3L	AOG36RCD3L AOG45RCD3L
Power cap 	1	For power cord installation	9352173011	9352173011
Auxiliary pipe assembly 	1	For wiring conduit (gas side) connection (May not be supplied, depending on the model)	9355292016	9355292016
Edge cover 	1	For wiring conduit installation hole edge protection	9352436000	9352436000
Tapping screw 	2	¥ For cabinet A and cabinet D mounting (1) ¥ Spare (1)	301463040100	301463040100
Binder 	1	For power cord binding	313035356905	313035356905
Putty 	1	For sealing	303020200114	303020200114
Coupler heat insulation 	1	For outdoor side pipe joint	313005074759	313005074759

