



Air Conditioning Technical Data

Wall mounted unit



EEDEN13-100

FTXG-J(A / W)

TABLE OF CONTENTS

FTXG-JW

1	Features	2
2	Specifications	3
	Technical Specifications	3
	Electrical Specifications	4
3	Options	5
	Options	5
4	Dimensional drawings	6
	Dimensional Drawings	6
5	Piping diagrams	7
	Piping Diagrams	7
6	Centre of gravity	8
	Centre of Gravity	8
7	Wiring diagrams	9
	Wiring Diagrams - Single Phase	9
8	Sound data	10
	Sound Pressure Spectrum	10

1 Features

1

- Daikin Emura's most obvious asset is its looks. The sober but stylish appearance adds an additional dimension to Daikin's well-known brand values of superior comfort and quality
- Remarkable blend of iconic design and engineering excellence with an elegant finish in matt crystal white
- Form. Function. Redefined. Daikin Emura represents a perfect marriage of style and substance, of form and function, of intelligent heating and efficient cooling.
- Good design award: unique evaluation criterion for industrial design in Japan
- The infrared remote control is user friendly and equipped with a timer function that enables you to programme the unit to start or stop at your desired time.
- Weekly timer can be set to start heating or cooling anytime on a daily or weekly basis
- Online controller (optional): control your indoor unit from any location via smartphone, laptop, pc, tablet or touch screen



2

2 Specifications

2-1 Technical Specifications				FTXG25JA	FTXG35JA	FTXG50JA	FTXG25JW	FTXG35JW	FTXG50JW		
Power input	Cooling	Nom.		kW	0.018 (3) / 0.018 (4) / 0.018 (5)	0.026 (3) / 0.026 (4) / 0.026 (5)	0.032 (3) / 0.032 (4) / 0.032 (5)	0.018 (3) / 0.018 (4) / 0.018 (5)	0.026 (3) / 0.026 (4) / 0.026 (5)	0.032 (3) / 0.032 (4) / 0.032 (5)	
	Heating	Nom.		kW	0.024 (3) / 0.024 (4) / 0.024 (5)	0.032 (3) / 0.032 (4) / 0.032 (5)	0.038 (3) / 0.038 (4) / 0.038 (5)	0.024 (3) / 0.02 (4) / 0.02 (5)	0.032 (3) / 0.032 (4) / 0.032 (5)	0.038 (3) / 0.038 (4) / 0.038 (5)	
Casing	Colour			Brushed aluminium			White				
Dimensions	Unit	Height/Width/Depth		mm	295/915/155						
	Packed unit	Height/Width/Depth		mm	377/1,003/285						
Weight	Unit			kg	11						
	Packed unit			kg	16			15			
Packing	Weight			kg	5			4			
Heat exchanger	Length			mm	610						
	Rows	Quantity			2						
	Fin pitch			mm	1.2						
	Stages	Quantity			18						
	Tube type				ø6.35 Hi-XD tube		ø6.35 Hi-XU tube		ø6.35 Hi-XD tube		ø6.35 Hi-XU tube
	Fin	Type			Multi slit fin						
Fan	Type			Cross flow fan							
	Air flow rate	Cooling	High	m ³ /min	8.8	10.1	10.3	8.8	10.1	10.3	
				cfm	311	357	364	311	357	364	
			Nom.	m ³ /min	8.8	10.1	10.3	8.8	10.1	10.3	
				cfm	311	357	364	311	357	364	
			Low	m ³ /min	4.7	4.6	6.7	4.7	4.6	6.7	
				cfm	166	162	237	166	162	237	
		Silent operation	m ³ /min	3.8	3.9	5.7	3.8	3.9	5.7		
			cfm	134	138	201	134	138	201		
		Heating	High	m ³ /min	9.6	10.8	11.4	9.6	10.8	11.4	
				cfm	339	381	402	339	381	402	
			Nom.	m ³ /min	7.9	8.6	9.8	7.9	8.6	9.8	
				cfm	279	304	346	279	304	346	
	Low		m ³ /min	6.2	6.4	8.1	6.2	6.4	8.1		
			cfm	219	226	286	219	226	286		
	Silent operation	m ³ /min	5.4	5.6	7.1	5.4	5.6	7.1			
cfm		191	198	251	191	198	251				
Fan motor	Model			KFD-280-40-8G							
	Speed	Steps			5 + silent, + auto						
		Cooling	High/Medium/Low/Silent operation		rpm	1,440/1,170/ 900/780	1,640/1,270/ 910/810	1,710/1,470/ 1,230/1,100	1,440/1,170/ 900/780	1,640/1,270/ 910/810	1,710/1,470/ 1,230/1,100
	Heating	High/Medium/Low/Silent operation		rpm	1,560/1,330/ 1,110/1,000	1,720/1,430/ 1,140/1,030	1,830/1,610/ 1,390/1,260	1,560/1,330/ 1,110/1,000	1,720/1,430/ 1,140/1,030	1,830/1,610/ 1,390/1,260	
Output	High		W	29		40		29		40	
Sound power level	Cooling	Nom.		dBA	56	60		56	60		
	Heating	High		dBA	55	58	60	55	58	60	
Sound pressure level	Cooling	High/Nom./Low/Silent operation			dBA	38/32/25/22	42/34/26/23	44/40/35/32	38/32/25/22	42/34/26/23	44/40/35/32
	Heating	Super high/High/Nom./Low/Silent operation			dBA	-/39/34/28/25	-/42/36/29/26	-/44/40/35/32	-/39/34/28/25	-/42/36/29/26	-/44/40/35/32
Refrigerant	Type			R-410A							
Piping connections	Liquid	OD			6.35						
	Gas	OD			9.52		12.7		9.5		12.7
	Drain				16 or 18		18		16 or 18		18
	Heat insulation				Both liquid and gas pipes						
Temperature control				Microcomputer control							
Air direction control				Right, Left, Horizontal, Downward							
Air filter	Type			Removable / washable / mildew proof							

Standard Accessories : Paper pattern; Quantity : 2;

Standard Accessories : Indoor unit fixing screws; Quantity : 2;

Standard Accessories : Remote control holder; Quantity : 1;

Standard Accessories : Batteries; Quantity : 2;

Standard Accessories : Wireless remote control; Quantity : 1;

2 Specifications

Standard Accessories : Installation manual; Quantity : 1;

Standard Accessories : Operation manual; Quantity : 1;

Standard Accessories : Titanium apatite photocatalytic air purification filter; Quantity : 2;

Standard Accessories : Mounting plate; Quantity : 1;

Standard Accessories : Paper pattern for installation; Quantity : 2;

2

2-2 Electrical Specifications				FTXG25JA	FTXG35JA	FTXG50JA	FTXG25JW	FTXG35JW	FTXG50JW
Power supply	Name			V1					
	Phase			1~					
	Frequency		Hz	50					
	Voltage		V	220-240					
Current	Nominal running current (RLA) - 50Hz	Cooling	A	0.09 (3) / 0.08 (4) / 0.08 (5)	0.13 (3) / 0.12 (4) / 0.12 (5)	0.16 (3) / 0.15 (4) / 0.14 (5)	0.09 (3) / 0.08 (4) / 0.08 (5)	0.13 (3) / 0.12 (4) / 0.12 (5)	0.16 (3) / 0.15 (4) / 0.14 (5)
		Heating	A	0.12 (3) / 0.11 (4) / 0.11 (5)	0.16 (3) / 0.15 (4) / 0.14 (5)	0.19 (3) / 0.18 (4) / 0.17 (5)	0.12 (3) / 0.11 (4) / 0.11 (5)	0.16 (3) / 0.15 (4) / 0.14 (5)	0.19 (3) / 0.18 (4) / 0.17 (5)
Wiring connections - 50Hz	For power supply	Remark	3 for power supply, 4 for interunit wiring (Earth wire included)						

Notes

(1) SL: The silent fan level of the air flow rate setting

(2) When connected with multi-system outdoor unit, refer to the specifications of the multi outdoor unit to be connected.

(3) 220V

(4) 230V

(5) 240V

3 Options

3 - 1 Options

FTXG-J

Indoor Units - Control systems

		FTXG25J	FTXG35J	FTXG50J
Wired remote control (3)			BRC944	
Cord for wired remote control	3m		BRCV901A03	
	8m		BRCV901A08	
Wiring adapter normal open contact / normal open pulse contact			KBP413A15 (1)	
Centralised control board	Up to 5 rooms		KRC72 (2)	
Anti-theft protection for remote control			KKF910A4	
Central remote controller			DCS302C51	
Unified ON/OFF control			DCS301B51	
Schedule timer			DST301B51	
Interface adapter for DIM-net			KRP928A25	
Online controller			KKRP01A	
External mounting kit for online controller			KKRPM01A	
Wifi power cable for online controller			KKRPW01A	
Touch LCD wall controller (4)			KBRC01A	
Simple wall controller (4)			KBRC501A	
KNX gateway			KUK-DD	

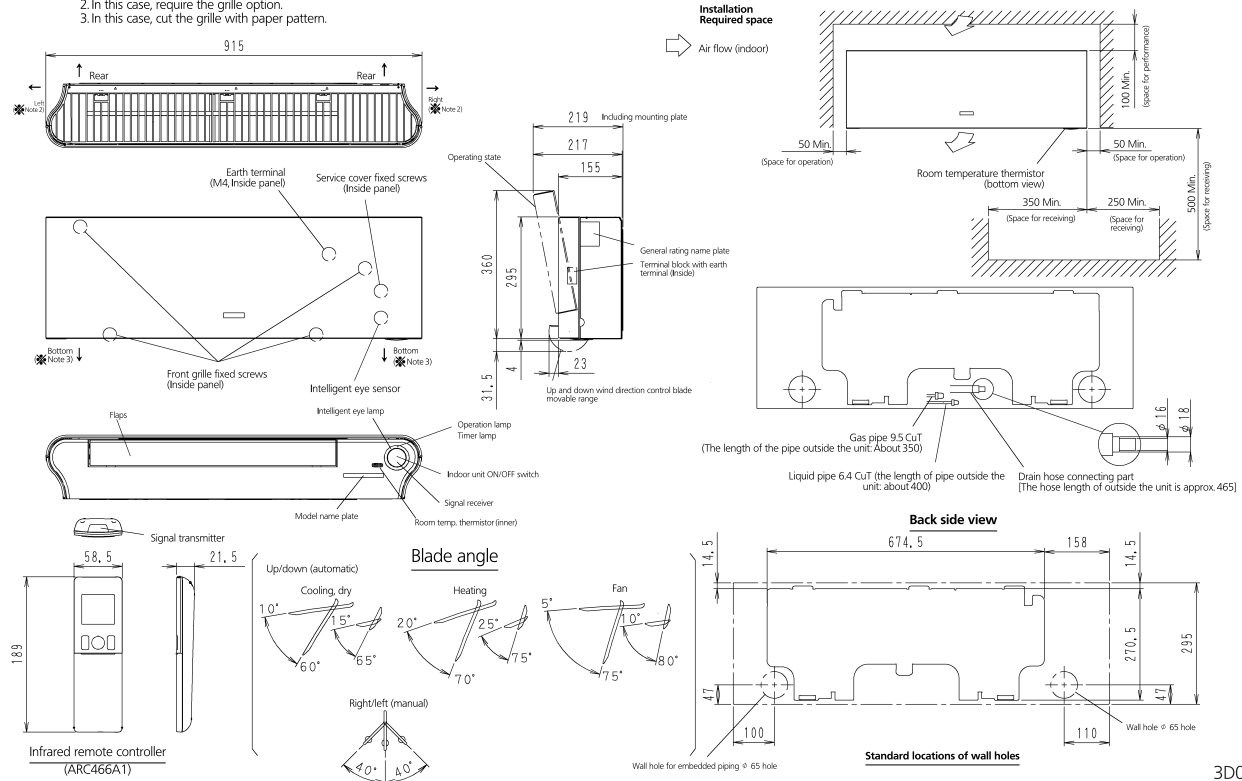
(1) Wiring adapter supplied by Daikin. Time clock and other devices: to be purchased locally.
 (2) Wiring adapter is also required for each indoor unit.
 (3) Cord for wired remote control BRCV901A03 or BRCV901A08 required.
 (4) Can only be used in combination with online controller KKRPM01A.

4 Dimensional drawings

4 - 1 Dimensional Drawings

FTXG25-35J

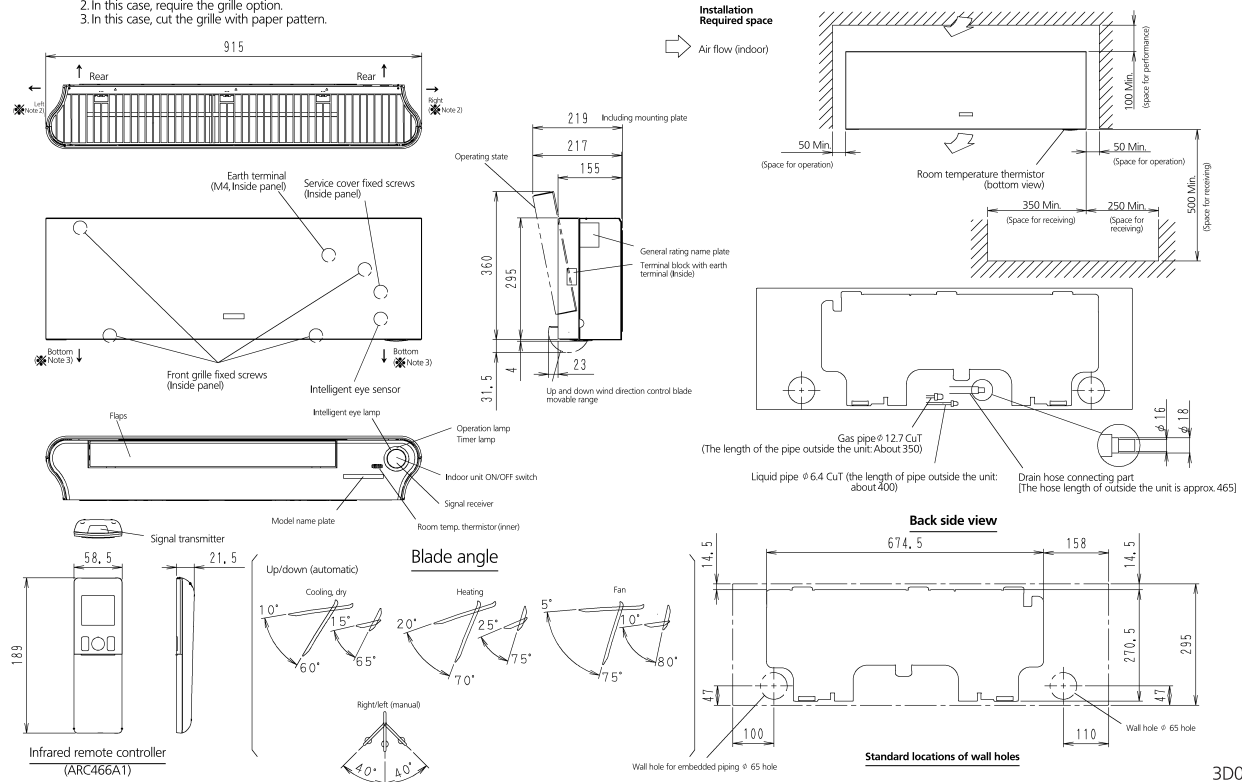
- Note)
1. The mark (→) shows piping direction.
 2. In this case, require the grille option.
 3. In this case, cut the grille with paper pattern.



3D065841C

FTXG50J

- Note)
1. The mark (→) shows piping direction.
 2. In this case, require the grille option.
 3. In this case, cut the grille with paper pattern.

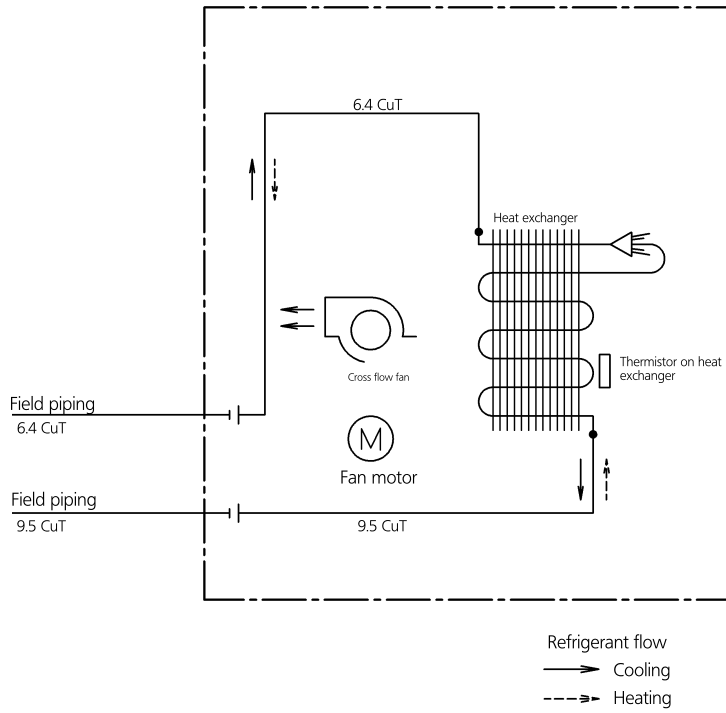


3D065842D

5 Piping diagrams

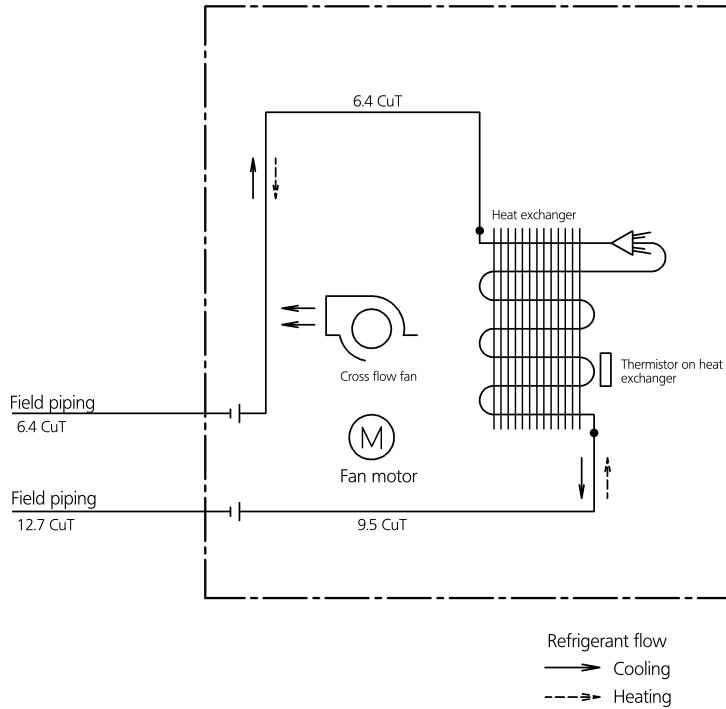
5 - 1 Piping Diagrams

FTXG25-35J



4D065855B

FTXG50J

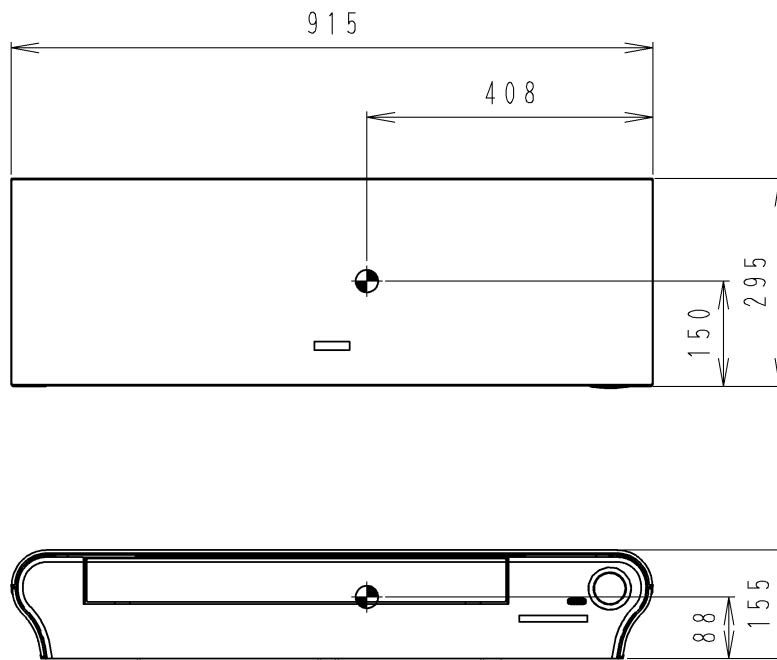


4D065856C

6 Centre of gravity

6 - 1 Centre of Gravity

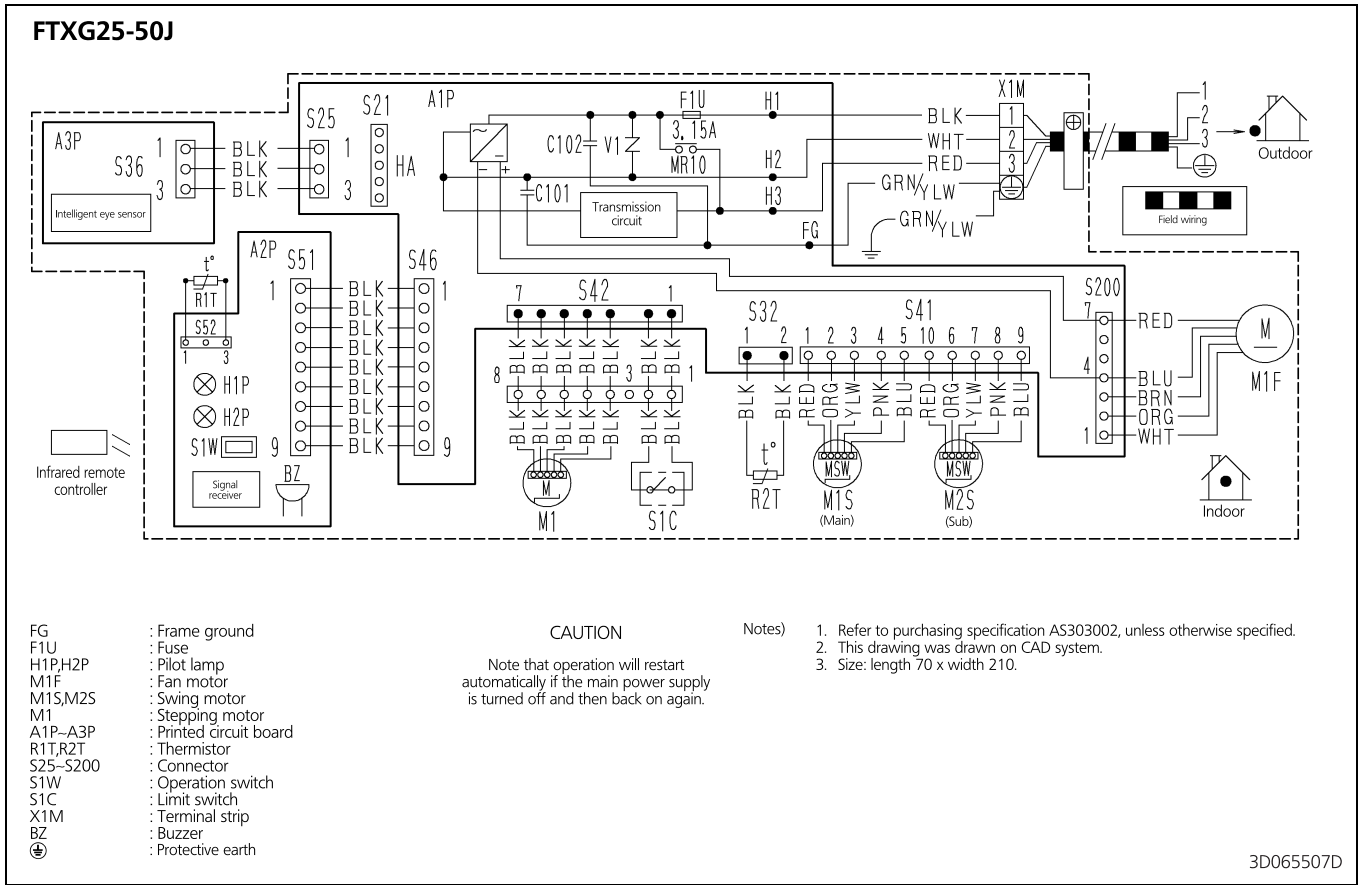
FTXG-J



4D065844C

7 Wiring diagrams

7 - 1 Wiring Diagrams - Single Phase

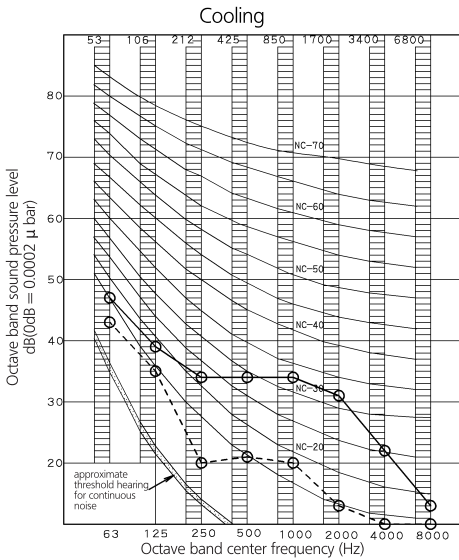


8 Sound data

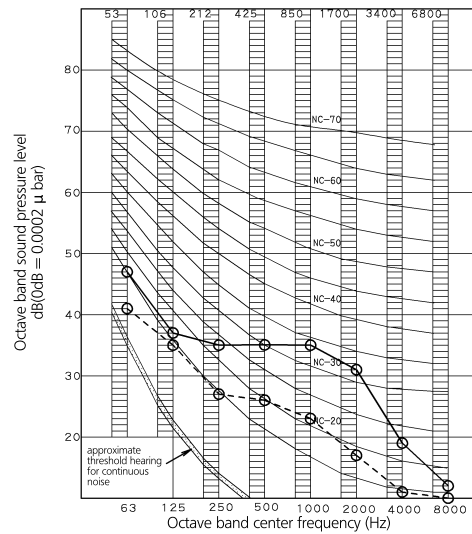
8 - 1 Sound Pressure Spectrum

8

FTXG25J



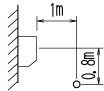
Heating



NOTES

- Overall (dB) (B,G,N is already rectified)
- Measuring place: Measure in anechoic room
- Operation noise differs with operation and ambient conditions.
- Operating conditions: Power source 220~240V 50Hz
- Location of microphone JISC9612
The operation noise measuring method is in accordance with JISC9612
- Standard external static pressure
○ 50 Hz 220~240V (H)
○ 50 Hz 220~240V (L)

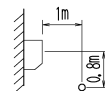
Scale	50Hz 220~240V (H)	50Hz 220~240V (L)
A	38	25



NOTES

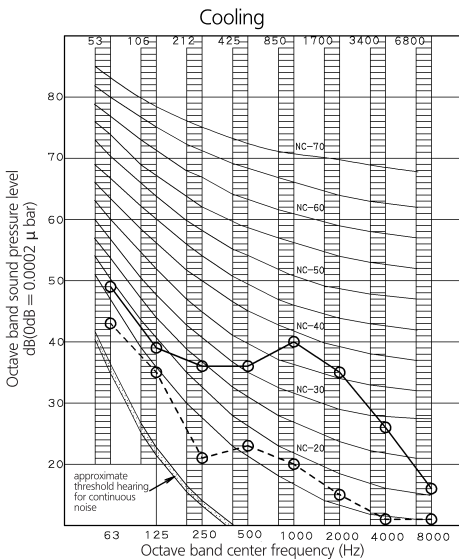
- Overall (dB) (B,G,N is already rectified)
- Measuring place: Measure in anechoic room
- Operation noise differs with operation and ambient conditions.
- Operating conditions: Power source 220~240V 50Hz
- Location of microphone JISC9612
The operation noise measuring method is in accordance with JISC9612
- Standard external static pressure
○ 50 Hz 220~240V (H)
○ 50 Hz 220~240V (L)

Scale	50Hz 220~240V (H)	50Hz 220~240V (L)
A	39	28

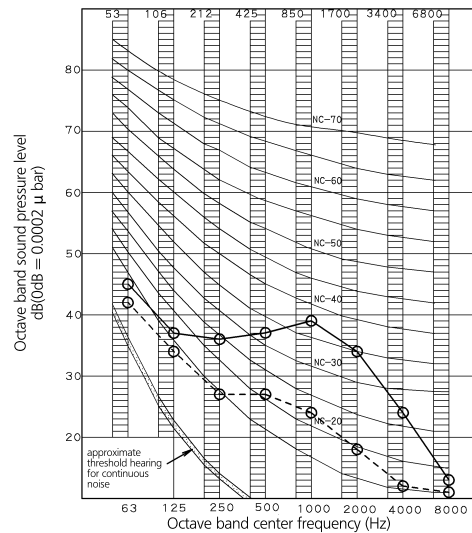


3D066708A

FTXG35J



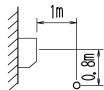
Heating



NOTES

- Overall (dB) (B,G,N is already rectified)
- Measuring place: Measure in anechoic room
- Operation noise differs with operation and ambient conditions.
- Operating conditions: Power source 220~240V 50Hz
- Location of microphone JISC9612
The operation noise measuring method is in accordance with JISC9612
- Standard external static pressure
○ 50 Hz 220~240V (H)
○ 50 Hz 220~240V (L)

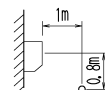
Scale	50Hz 220~240V (H)	50Hz 220~240V (L)
A	42	26



NOTES

- Overall (dB) (B,G,N is already rectified)
- Measuring place: Measure in anechoic room
- Operation noise differs with operation and ambient conditions.
- Operating conditions: Power source 220~240V 50Hz
- Location of microphone JISC9612
The operation noise measuring method is in accordance with JISC9612
- Standard external static pressure
○ 50 Hz 220~240V (H)
○ 50 Hz 220~240V (L)

Scale	50Hz 220~240V (H)	50Hz 220~240V (L)
A	42	29

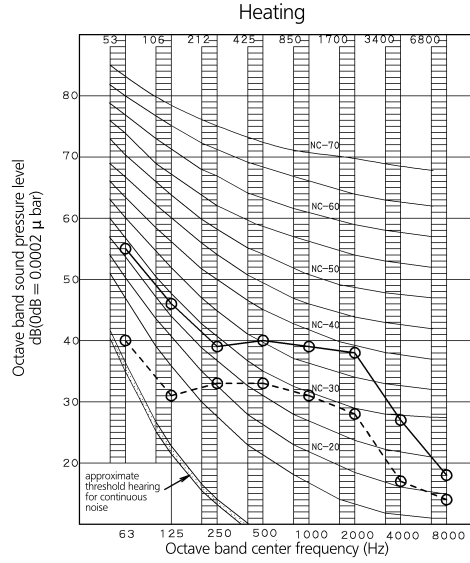
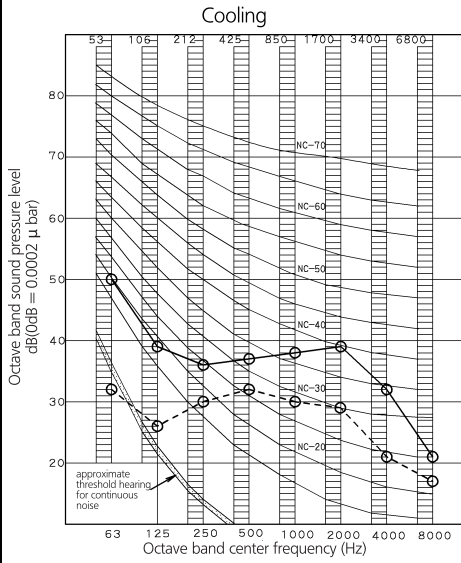


3D066709A

8 Sound data

8 - 1 Sound Pressure Spectrum

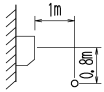
FTXG50J



NOTES

- 1 Overall (dB)
(B,G,N is already rectified)
- 2 Measuring place: Measure in anechoic room
- 3 Operation noise differs with operation and ambient conditions.
- 4 Operating conditions: Power source 220~240V 50Hz
- 5 Location of microphone
JISC9612
The operation noise measuring method is in accordance with JISC9612
- 6 Standard external static pressure
○—○ 50 Hz 220~240V (H)
○---○ 50 Hz 220~240V (L)

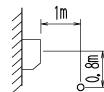
Scale	50Hz 220~240V (H)	50Hz 220~240V (L)
A	44	35



NOTES

- 1 Overall (dB)
(B,G,N is already rectified)
- 2 Measuring place: Measure in anechoic room
- 3 Operation noise differs with operation and ambient conditions.
- 4 Operating conditions: Power source 220~240V 50Hz
- 5 Location of microphone
JISC9612
The operation noise measuring method is in accordance with JISC9612
- 6 Standard external static pressure
○—○ 50 Hz 220~240V (H)
○---○ 50 Hz 220~240V (L)

Scale	50Hz 220~240V (H)	50Hz 220~240V (L)
A	44	35



3D066710B



Daikin Europe N.V. participates in the Eurovent Certification programme for Air conditioners (AC), Liquid Chilling Packages (LCP) and Fan coil units (FCU). Check on-going validity of certificate online: www.eurovent-certification.com or using: www.certiflash.com

The present leaflet is drawn up by way of information only and does not constitute an offer binding upon Daikin Europe N.V.. Daikin Europe N.V. has compiled the content of this leaflet to the best of its knowledge. No express or implied warranty is given for the completeness, accuracy, reliability or fitness for particular purpose of its content and the products and services presented therein. Specifications are subject to change without prior notice. Daikin Europe N.V. explicitly rejects any liability for any direct or indirect damage, in the broadest sense, arising from or related to the use and/or interpretation of this leaflet. All content is copyrighted by Daikin Europe N.V.

BARCODE

Daikin products are distributed by: