



Air Conditioners

Technical Data

VRV[®]

Wall mounted unit



EEDEN11-204

FXAQ-PA

Indoor unit * Wall mounted unit * FXAQ-PA

Specifications:

Model		FXAQ15PAV1	FXAQ20PAV1	FXAQ25PAV1	FXAQ32PAV1	FXAQ40PAV1	FXAQ50PAV1	FXAQ63PAV1	
Power Supply		1 Phase 50Hz		220-240V					
Cooling capacity	★1 kW	1.7	2.2	2.8	3.6	4.5	5.6	7.1	
Heating capacity	★2 kW	1.9	2.5	3.2	4.0	5.0	6.3	8.0	
Casing/color		White(3,0Y8,5/0,5)							
Dimensions:(H x W x D)		290×795×238				290×1050×238			
Coil(cross fin coil)	Rows x Stages x Fin pitch	2×14×1,4							
	Face area	0,161				0,213			
Fan	Model	QCL9661M						QCL9686M	
	Type	Cross flow fan							
	Motor output	40					43		
	Air flow rate	m³/min	7,0/4,5(H/L)	7,5/4,5(H/L)	8/5(H/L)	8,5/5,5(H/L)	12/9(H/L)	15/12(H/L)	19/14(H/L)
	Static external pressure (50/60Hz)	mmH ₂ O	—						
Drive		Direct drive							
Temperature control		Microprocessor thermostat for cooling and heating							
Sound absorbing thermal insulation material		Foamed polystyrene / foamed polyethylene							
Air filter		Resin net(washable)							
Weight		kg	11				14		
Piping connections	Liquid	mm	φ6,4(flare connection)					φ9,5(flare connection)	
	Gas	mm	φ12,7(flare connection)					φ15,9(flare connection)	
	Drain	mm	VP13(External dia,18 , Internal dia,13)						
Safety devices		Fuse							
Refrigerant control		Electronic expansion valve							
Connectable outdoor unit		R410A VRV Series							
Standard accessories		Operation manual, Installation manual, Installation panel, Paper pattern for installation, Insulation tape, Clamps, Screws							
Decoration Panel (option)	Model	—							
	Color	—							
	Dimensions(H x W x D)	mm	—						
	Air filter	—							
	Mass	kg	—						

NOTES

★1. Nominal cooling capacities are based on the following conditions:
 Return air temperature:27°CDB, 19°CWB, Outdoor temperature:35°CDB
 Equivalent ref.piping:5m(Horizontal)

★2. Nominal heating capacities are based on the following conditions:
 Return air temperature:20°CDB, Outdoor temperature:7°CDB, 6°CWB
 Equivalent ref.piping:5m(Horizontal)

3. Capacities are net, including a deduction for cooling (an addition for heating)for indoor fan motor heat.

Indoor unit * Wall mounted unit * FXAQ-PA

Electrical Data:

Units				Power supply		IFM		Input(W)	
Model	Hz	Volts	Voltage range	MCA	MFA	kW	FLA	Cooling	Heating
FXAQ15PAV1	50	220-240	MAX. 264 Min. 198	0.3	16	0.040	0.2	17	25
FXAQ20P(A)V1				0.3	16	0.040	0.2	19	29
FXAQ25P(A)V1				0.4	16	0.040	0.3	28	34
FXAQ32P(A)V1				0.4	16	0.040	0.3	30	35
FXAQ40P(A)V1				0.4	16	0.043	0.3	20	20
FXAQ50P(A)V1				0.5	16	0.043	0.4	33	39
FXAQ63P(A)V1				0.6	16	0.043	0.5	50	60

Symbols :

- MCA : Min. Circuit Amps (A)
- MFA : Max. Fuse Amps (See note 5)
- kW : Fan Motor Rated Output(kW)
- FLA : Full Load Amps(A)
- IFM : Indoor Fan Motor

Note :

1. Voltage range
Units are suitable for use on electrical systems where voltage supplied to unit terminals is not below or above listed range limits,
2. Maximum allowable voltage unbalance between phases is 2%.
3. MCA/MFA
 $MCA = 1.25 \times FLA$
 $MFA \leq 4 \times FLA$
 (Next lower standard fuse rating. Min.16A)
4. Select wire size based on the MCA.
5. Instead of fuse, use Circuit Breaker.

Indoor unit * Wall mounted unit * FXAQ-PA

Safety device settings:

FXAQ-PA

	Safety devices	20	25	32	40	50	63
FXAQ~P	PC board fuse	250V 3.15A					

4D034906L

Indoor unit * Wall mounted unit * FXAQ-PA

Options:

No.	Item	Type		FXA~LVE FXA~LVEC FXAQ~MVE	FXAQ~MAVE FXAQ~MAVET FXAQ~MVED	FXAQ~MHV1	FXZQ~MVE FXZQ~MVET	FXAQ~P(A)V1	FXAQ~PVE
		Wireless	H/P C/O						
1	Remote controller	Wireless			BRC7EA618		BRC7E530W		BRC7EA618
					BRC7EA619		BRC7E531W		BRC7EA619
		Wired			BRC1C517 • BRC1D52 • BRC1E51A7				BRC1C62 • BRC1D61 • BRC1E61
					BRC1C6Z				
2	Simplified remote controller			---	---	---	---	---	---
3	Remote controller for hotel use			---	---	---	---	---	---
4	Adaptor for wiring			---	---	---	---	---	---
5-1	Wiring adaptor for electrical appendices(1)				*KRP2A51		*KRP2A52		*KRP2A51
					*KRP2A61		*KRP2A62		*KRP2A61
5-1	Wiring adaptor for electrical appendices(2)				*KRP4AA51		*KRP4AA53		*KRP4AA51
6	Remote sensor						KRCS01-1B		
7	Installation box for adaptor PCB.				Note 2,3 KRP4AA93		Note 4,6 KRP1BA101		Note 2,3 KRP4AA93
8	Central remote controller						DCS302C51		
							DCS302CA61		
8-1	Electrical box with earth terminal(3 blocks)						KJB311AA		
9	Unified on/off controller						DCS301B51		
							DCS301BA61		
9-1	Electrical box with earth terminal(2 blocks)						KJB212AA		
9-2	Noise Filter (for electromagnetic interface use only)						KEK26-1A		
10	Schedule timer						DST301B51		
							DST301BA61		
11	External control adaptor for outdoor unit (Must be installed on indoor units)				*DTA104A51		*DTA104A52		*DTA104A51
					*DTA104A61		*DTA104A62		*DTA104A61
12	Adaptor for multi tenant			---	*DTA114A61	---	---		*DTA114A61

Notes:

1. Installation box (No.7) is necessary for each adaptor marked ★.
2. Up to 2 adaptors can be fixed for each installation box.
3. Only one installation box can be installed for each indoor unit.
4. Up to 2 installation boxes can be installed for each indoor unit.
5. Installation box (No.7) is necessary for second adaptor.
6. Installation box (No.7) is necessary for each adaptor.

Indoor unit * Wall mounted unit * FXAQ-PA

Capacity tables (cooling):

FXAQ 50Hz	Unit Size	Out door		14.0WB		16.0WB		18.0WB		19.0WB		20.0WB		22.0WB		24.0WB		
		20.0DB		23.0DB		26.0DB		27.0DB		28.0DB		30.0DB		32.0DB				
		°CDB	TC	SHC	TC	SHC	TC	SHC	TC	SHC	TC	SHC	TC	SHC	TC	SHC		
15	1.7	10.0	1.1	1.1	1.4	1.4	1.6	1.4	1.7	1.5	1.8	1.5	2.0	1.5	2.2	1.5		
		12.0	1.1	1.1	1.4	1.4	1.6	1.4	1.7	1.5	1.8	1.5	2.0	1.5	2.2	1.5		
		14.0	1.1	1.1	1.4	1.4	1.6	1.4	1.7	1.5	1.8	1.5	2.0	1.5	2.2	1.5		
		16.0	1.1	1.1	1.4	1.4	1.6	1.4	1.7	1.5	1.8	1.5	2.0	1.5	2.1	1.5		
		18.0	1.1	1.1	1.4	1.4	1.6	1.4	1.7	1.5	1.8	1.5	2.0	1.5	2.1	1.5		
		20.0	1.1	1.1	1.4	1.4	1.6	1.4	1.7	1.5	1.8	1.5	2.0	1.5	2.1	1.4		
		21.0	1.1	1.1	1.4	1.4	1.6	1.4	1.7	1.5	1.8	1.5	2.0	1.5	2.1	1.4		
		23.0	1.1	1.1	1.4	1.4	1.6	1.4	1.7	1.5	1.8	1.5	2.0	1.5	2.0	1.4		
		25.0	1.1	1.1	1.4	1.4	1.6	1.4	1.7	1.5	1.8	1.5	2.0	1.5	2.0	1.4		
		27.0	1.1	1.1	1.4	1.4	1.6	1.4	1.7	1.5	1.8	1.5	1.9	1.5	2.0	1.4		
		29.0	1.1	1.1	1.4	1.4	1.6	1.4	1.7	1.5	1.8	1.5	1.9	1.5	2.0	1.4		
		31.0	1.1	1.1	1.4	1.4	1.6	1.4	1.7	1.5	1.8	1.5	1.9	1.5	1.9	1.4		
		33.0	1.1	1.1	1.4	1.4	1.6	1.4	1.7	1.5	1.8	1.5	1.9	1.4	1.9	1.4		
		35.0	1.1	1.1	1.4	1.4	1.6	1.4	1.7	1.5	1.8	1.5	1.8	1.4	1.9	1.4		
		37.0	1.1	1.1	1.4	1.4	1.6	1.4	1.7	1.5	1.8	1.4	1.8	1.4	1.8	1.3		
		39.0	1.1	1.1	1.4	1.4	1.6	1.4	1.7	1.5	1.7	1.4	1.8	1.4	1.8	1.3		
		20	2.2	10.0	1.5	1.5	1.8	1.8	2.1	1.9	2.2	1.9	2.3	1.9	2.6	2.0	2.9	1.9
				12.0	1.5	1.5	1.8	1.8	2.1	1.9	2.2	1.9	2.3	1.9	2.6	2.0	2.9	1.9
				14.0	1.5	1.5	1.8	1.8	2.1	1.9	2.2	1.9	2.3	1.9	2.6	2.0	2.8	1.9
				16.0	1.5	1.5	1.8	1.8	2.1	1.9	2.2	1.9	2.3	1.9	2.6	2.0	2.8	1.9
18.0	1.5			1.5	1.8	1.8	2.1	1.9	2.2	1.9	2.3	1.9	2.6	2.0	2.7	1.9		
20.0	1.5			1.5	1.8	1.8	2.1	1.9	2.2	1.9	2.3	1.9	2.6	2.0	2.7	1.9		
21.0	1.5			1.5	1.8	1.8	2.1	1.9	2.2	1.9	2.3	1.9	2.6	2.0	2.7	1.9		
23.0	1.5			1.5	1.8	1.8	2.1	1.9	2.2	1.9	2.3	1.9	2.6	1.9	2.6	1.9		
25.0	1.5			1.5	1.8	1.8	2.1	1.9	2.2	1.9	2.3	1.9	2.6	1.9	2.6	1.9		
27.0	1.5			1.5	1.8	1.8	2.1	1.9	2.2	1.9	2.3	1.9	2.5	1.9	2.6	1.8		
29.0	1.5			1.5	1.8	1.8	2.1	1.9	2.2	1.9	2.3	1.9	2.5	1.9	2.5	1.8		
31.0	1.5			1.5	1.8	1.8	2.1	1.9	2.2	1.9	2.3	1.9	2.4	1.9	2.5	1.8		
33.0	1.5			1.5	1.8	1.8	2.1	1.9	2.2	1.9	2.3	1.9	2.4	1.9	2.5	1.8		
35.0	1.5			1.5	1.8	1.8	2.1	1.9	2.2	1.9	2.3	1.9	2.4	1.9	2.4	1.8		
37.0	1.5			1.5	1.8	1.8	2.1	1.9	2.2	1.9	2.3	1.9	2.3	1.8	2.4	1.7		
39.0	1.5			1.5	1.8	1.8	2.1	1.9	2.2	1.9	2.2	1.9	2.3	1.8	2.3	1.7		
25	2.8			10.0	1.9	1.8	2.3	2.0	2.6	2.2	2.8	2.2	3.0	2.2	3.4	2.3	3.7	2.3
				12.0	1.9	1.8	2.3	2.0	2.6	2.2	2.8	2.2	3.0	2.2	3.4	2.3	3.6	2.2
				14.0	1.9	1.8	2.3	2.0	2.6	2.2	2.8	2.2	3.0	2.2	3.4	2.3	3.6	2.3
				16.0	1.9	1.8	2.3	2.0	2.6	2.2	2.8	2.2	3.0	2.2	3.4	2.3	3.5	2.2
		18.0	1.9	1.8	2.3	2.0	2.6	2.2	2.8	2.2	3.0	2.2	3.4	2.3	3.5	2.2		
		20.0	1.9	1.8	2.3	2.0	2.6	2.2	2.8	2.2	3.0	2.2	3.4	2.3	3.4	2.2		
		21.0	1.9	1.8	2.3	2.0	2.6	2.2	2.8	2.2	3.0	2.2	3.4	2.3	3.4	2.2		
		23.0	1.9	1.8	2.3	2.0	2.6	2.2	2.8	2.2	3.0	2.2	3.3	2.3	3.4	2.2		
		25.0	1.9	1.8	2.3	2.0	2.6	2.2	2.8	2.2	3.0	2.2	3.3	2.2	3.3	2.2		
		27.0	1.9	1.8	2.3	2.0	2.6	2.2	2.8	2.2	3.0	2.2	3.2	2.2	3.3	2.1		
		29.0	1.9	1.8	2.3	2.0	2.6	2.2	2.8	2.2	3.0	2.2	3.2	2.2	3.2	2.1		
		31.0	1.9	1.8	2.3	2.0	2.6	2.2	2.8	2.2	3.0	2.2	3.1	2.2	3.2	2.1		
		33.0	1.9	1.8	2.3	2.0	2.6	2.2	2.8	2.2	3.0	2.2	3.1	2.2	3.1	2.1		
		35.0	1.9	1.8	2.3	2.0	2.6	2.2	2.8	2.2	3.0	2.2	3.0	2.2	3.1	2.1		
		37.0	1.9	1.8	2.3	2.0	2.6	2.2	2.8	2.2	2.9	2.2	3.0	2.1	3.0	2.0		
		39.0	1.9	1.8	2.3	2.0	2.6	2.2	2.8	2.2	2.9	2.2	2.9	2.1	3.0	2.0		
		32	3.6	10.0	2.4	2.2	2.9	2.4	3.4	2.6	3.6	2.7	3.8	2.7	4.3	2.8	4.7	2.8
				12.0	2.4	2.2	2.9	2.4	3.4	2.6	3.6	2.7	3.8	2.7	4.3	2.8	4.7	2.8
				14.0	2.4	2.2	2.9	2.4	3.4	2.6	3.6	2.7	3.8	2.7	4.3	2.8	4.6	2.8
				16.0	2.4	2.2	2.9	2.4	3.4	2.6	3.6	2.7	3.8	2.7	4.3	2.8	4.6	2.8
18.0	2.4			2.2	2.9	2.4	3.4	2.6	3.6	2.7	3.8	2.7	4.3	2.8	4.5	2.7		
20.0	2.4			2.2	2.9	2.4	3.4	2.6	3.6	2.7	3.8	2.7	4.3	2.8	4.4	2.7		
21.0	2.4			2.2	2.9	2.4	3.4	2.6	3.6	2.7	3.8	2.7	4.3	2.8	4.4	2.7		
23.0	2.4			2.2	2.9	2.4	3.4	2.6	3.6	2.7	3.8	2.7	4.2	2.8	4.3	2.7		
25.0	2.4			2.2	2.9	2.4	3.4	2.6	3.6	2.7	3.8	2.7	4.2	2.8	4.3	2.6		
27.0	2.4			2.2	2.9	2.4	3.4	2.6	3.6	2.7	3.8	2.7	4.1	2.7	4.2	2.6		
29.0	2.4			2.2	2.9	2.4	3.4	2.6	3.6	2.7	3.8	2.7	4.1	2.7	4.2	2.6		
31.0	2.4			2.2	2.9	2.4	3.4	2.6	3.6	2.7	3.8	2.7	4.0	2.7	4.1	2.6		
33.0	2.4			2.2	2.9	2.4	3.4	2.6	3.6	2.7	3.8	2.7	3.9	2.6	4.0	2.5		
35.0	2.4			2.2	2.9	2.4	3.4	2.6	3.6	2.7	3.8	2.7	3.9	2.6	4.0	2.5		
37.0	2.4			2.2	2.9	2.4	3.4	2.6	3.6	2.7	3.7	2.6	3.8	2.6	3.9	2.5		
39.0	2.4			2.2	2.9	2.4	3.4	2.6	3.6	2.7	3.7	2.6	3.8	2.6	3.8	2.5		
				TC: Total capacity: kW														
				SHC: Sensible heat capacity: kW														

Indoor unit * Wall mounted unit * FXAQ-PA

Capacity tables (cooling):

FXAQ 50Hz	Unit Size	Out door °CDB	14.0WB		16.0WB		18.0WB		19.0WB		20.0WB		22.0WB		24.0WB	
			20.0DB	SHC	23.0DB	SHC	26.0DB	SHC	27.0DB	SHC	28.0DB	SHC	30.0DB	SHC	32.0DB	SHC
40	4,5	10.0	3.0	2.9	3.6	3.3	4.2	3.7	4.5	3.5	4.8	3.6	5.4	3.6	5.9	3.6
		12.0	3.0	2.9	3.6	3.3	4.2	3.7	4.5	3.5	4.8	3.6	5.4	3.6	5.8	3.5
		14.0	3.0	2.9	3.6	3.3	4.2	3.7	4.5	3.5	4.8	3.6	5.4	3.6	5.8	3.5
		16.0	3.0	2.9	3.6	3.3	4.2	3.7	4.5	3.5	4.8	3.6	5.4	3.6	5.7	3.5
		18.0	3.0	2.9	3.6	3.3	4.2	3.7	4.5	3.5	4.8	3.6	5.4	3.6	5.6	3.4
		20.0	3.0	2.9	3.6	3.3	4.2	3.7	4.5	3.5	4.8	3.6	5.4	3.6	5.5	3.4
		21.0	3.0	2.9	3.6	3.3	4.2	3.7	4.5	3.5	4.8	3.6	5.4	3.6	5.5	3.4
		23.0	3.0	2.9	3.6	3.3	4.2	3.7	4.5	3.5	4.8	3.6	5.3	3.6	5.4	3.3
		25.0	3.0	2.9	3.6	3.3	4.2	3.7	4.5	3.5	4.8	3.6	5.2	3.6	5.3	3.3
		27.0	3.0	2.9	3.6	3.3	4.2	3.7	4.5	3.5	4.8	3.6	5.2	3.5	5.3	3.3
		29.0	3.0	2.9	3.6	3.3	4.2	3.7	4.5	3.5	4.8	3.6	5.1	3.5	5.2	3.2
		31.0	3.0	2.9	3.6	3.3	4.2	3.7	4.5	3.5	4.8	3.6	5.0	3.4	5.1	3.2
		33.0	3.0	2.9	3.6	3.3	4.2	3.7	4.5	3.5	4.8	3.6	4.9	3.4	5.0	3.1
		35.0	3.0	2.9	3.6	3.3	4.2	3.7	4.5	3.5	4.7	3.6	4.9	3.4	5.0	3.1
		37.0	3.0	2.9	3.6	3.3	4.2	3.7	4.5	3.5	4.7	3.5	4.8	3.3	4.9	3.1
		39.0	3.0	2.9	3.6	3.3	4.2	3.7	4.5	3.5	4.6	3.5	4.7	3.3	4.8	3.0
50	5,6	10.0	3.8	3.2	4.5	3.7	5.2	4.1	5.6	4.2	6.0	4.3	6.7	4.4	7.4	4.4
		12.0	3.8	3.2	4.5	3.7	5.2	4.1	5.6	4.2	6.0	4.3	6.7	4.4	7.3	4.3
		14.0	3.8	3.2	4.5	3.7	5.2	4.1	5.6	4.2	6.0	4.3	6.7	4.4	7.2	4.3
		16.0	3.8	3.2	4.5	3.7	5.2	4.1	5.6	4.2	6.0	4.3	6.7	4.4	7.1	4.3
		18.0	3.8	3.2	4.5	3.7	5.2	4.1	5.6	4.2	6.0	4.3	6.7	4.4	7.0	4.2
		20.0	3.8	3.2	4.5	3.7	5.2	4.1	5.6	4.2	6.0	4.3	6.7	4.4	6.9	4.2
		21.0	3.8	3.2	4.5	3.7	5.2	4.1	5.6	4.2	6.0	4.3	6.7	4.4	6.8	4.2
		23.0	3.8	3.2	4.5	3.7	5.2	4.1	5.6	4.2	6.0	4.3	6.6	4.4	6.7	4.1
		25.0	3.8	3.2	4.5	3.7	5.2	4.1	5.6	4.2	6.0	4.3	6.5	4.3	6.6	4.1
		27.0	3.8	3.2	4.5	3.7	5.2	4.1	5.6	4.2	6.0	4.3	6.4	4.3	6.6	4.0
		29.0	3.8	3.2	4.5	3.7	5.2	4.1	5.6	4.2	6.0	4.3	6.3	4.2	6.5	4.0
		31.0	3.8	3.2	4.5	3.7	5.2	4.1	5.6	4.2	6.0	4.3	6.2	4.2	6.4	3.9
		33.0	3.8	3.2	4.5	3.7	5.2	4.1	5.6	4.2	6.0	4.3	6.1	4.2	6.3	3.9
		35.0	3.8	3.2	4.5	3.7	5.2	4.1	5.6	4.2	5.9	4.3	6.0	4.1	6.2	3.8
		37.0	3.8	3.2	4.5	3.7	5.2	4.1	5.6	4.2	5.8	4.3	5.9	4.1	6.1	3.8
		39.0	3.8	3.2	4.5	3.7	5.2	4.1	5.6	4.2	5.7	4.2	5.8	4.0	6.0	3.8
63	7,1	10.0	4.8	4.1	5.7	4.6	6.6	5.1	7.1	5.3	7.6	5.4	8.5	5.6	9.3	5.3
		12.0	4.8	4.1	5.7	4.6	6.6	5.1	7.1	5.3	7.6	5.4	8.5	5.6	9.2	5.3
		14.0	4.8	4.1	5.7	4.6	6.6	5.1	7.1	5.3	7.6	5.4	8.5	5.6	9.1	5.2
		16.0	4.8	4.1	5.7	4.6	6.6	5.1	7.1	5.3	7.6	5.4	8.5	5.6	9.0	5.2
		18.0	4.8	4.1	5.7	4.6	6.6	5.1	7.1	5.3	7.6	5.4	8.5	5.6	8.8	5.2
		20.0	4.8	4.1	5.7	4.6	6.6	5.1	7.1	5.3	7.6	5.4	8.5	5.6	8.7	5.1
		21.0	4.8	4.1	5.7	4.6	6.6	5.1	7.1	5.3	7.6	5.4	8.5	5.6	8.7	5.1
		23.0	4.8	4.1	5.7	4.6	6.6	5.1	7.1	5.3	7.6	5.4	8.4	5.5	8.5	5.0
		25.0	4.8	4.1	5.7	4.6	6.6	5.1	7.1	5.3	7.6	5.4	8.3	5.5	8.4	5.0
		27.0	4.8	4.1	5.7	4.6	6.6	5.1	7.1	5.3	7.6	5.4	8.1	5.4	8.3	4.9
		29.0	4.8	4.1	5.7	4.6	6.6	5.1	7.1	5.3	7.6	5.4	8.0	5.4	8.2	4.9
		31.0	4.8	4.1	5.7	4.6	6.6	5.1	7.1	5.3	7.6	5.4	7.9	5.3	8.1	4.8
		33.0	4.8	4.1	5.7	4.6	6.6	5.1	7.1	5.3	7.6	5.4	7.8	5.2	7.9	4.8
		35.0	4.8	4.1	5.7	4.6	6.6	5.1	7.1	5.3	7.5	5.4	7.7	5.2	7.8	4.7
		37.0	4.8	4.1	5.7	4.6	6.6	5.1	7.1	5.3	7.4	5.3	7.5	5.1	7.7	4.7
		39.0	4.8	4.1	5.7	4.6	6.6	5.1	7.1	5.3	7.2	5.3	7.4	5.1	7.6	4.6
TC: Total capacity: kW																
SHC: Sensible heat capacity: kW																

Indoor unit * Wall mounted unit * FXAQ-PA

Capacity tables (heating):

FXAQ

CA12A426

[50Hz]

Heating Capacity

Unit Size	Outdoor air temp		INDOOR AIR TEMP. °CDB					
			16.0	18.0	20.0	21.0	22.0	24.0
	°CDB	°CWB	KW	KW	KW	KW	KW	KW
15	-19.8	-20.0	1.1	1.1	1.1	1.1	1.1	1.1
	-18.8	-19.0	1.2	1.2	1.1	1.1	1.1	1.1
	-16.7	-17.0	1.2	1.2	1.2	1.2	1.2	1.2
	-14.7	-15.0	1.3	1.3	1.3	1.3	1.3	1.3
	-12.6	-13.0	1.4	1.4	1.3	1.3	1.3	1.3
	-10.5	-11.0	1.4	1.4	1.4	1.4	1.4	1.4
	-9.5	-10.0	1.5	1.5	1.4	1.4	1.4	1.4
	-8.5	-9.1	1.5	1.5	1.5	1.5	1.5	1.5
	-7.0	-7.6	1.5	1.5	1.5	1.5	1.5	1.5
	-5.0	-5.6	1.6	1.6	1.6	1.6	1.6	1.6
	-3.0	-3.7	1.7	1.7	1.7	1.7	1.7	1.7
	0.0	-0.7	1.8	1.8	1.8	1.8	1.8	1.7
	3.0	2.2	1.9	1.9	1.9	1.8	1.8	1.7
	5.0	4.1	1.9	1.9	1.9	1.8	1.8	1.7
	7.0	6.0	2.0	2.0	1.9	1.8	1.8	1.7
	9.0	7.9	2.1	2.0	1.9	1.8	1.8	1.7
11.0	9.8	2.1	2.0	1.9	1.8	1.8	1.7	
13.0	11.8	2.1	2.0	1.9	1.8	1.8	1.7	
15.0	13.7	2.1	2.0	1.9	1.8	1.8	1.7	
20	-19.8	-20.0	1.5	1.5	1.5	1.5	1.5	1.5
	-18.8	-19.0	1.5	1.5	1.5	1.5	1.5	1.5
	-16.7	-17.0	1.6	1.6	1.6	1.6	1.6	1.6
	-14.7	-15.0	1.7	1.7	1.7	1.7	1.7	1.7
	-12.6	-13.0	1.8	1.8	1.8	1.8	1.8	1.8
	-10.5	-11.0	1.9	1.9	1.9	1.9	1.9	1.9
	-9.5	-10.0	1.9	1.9	1.9	1.9	1.9	1.9
	-8.5	-9.1	2.0	2.0	1.9	1.9	1.9	1.9
	-7.0	-7.6	2.0	2.0	2.0	2.0	2.0	2.0
	-5.0	-5.6	2.1	2.1	2.1	2.1	2.1	2.1
	-3.0	-3.7	2.2	2.2	2.2	2.2	2.2	2.2
	0.0	-0.7	2.3	2.3	2.3	2.3	2.3	2.2
	3.0	2.2	2.5	2.5	2.4	2.4	2.3	2.2
	5.0	4.1	2.5	2.5	2.5	2.4	2.3	2.2
	7.0	6.0	2.6	2.6	2.5	2.4	2.3	2.2
	9.0	7.9	2.7	2.7	2.5	2.4	2.3	2.2
11.0	9.8	2.8	2.7	2.5	2.4	2.3	2.2	
13.0	11.8	2.8	2.7	2.5	2.4	2.3	2.2	
15.0	13.7	2.8	2.7	2.5	2.4	2.3	2.2	
25	-19.8	-20.0	1.9	1.9	1.9	1.9	1.9	1.9
	-18.8	-19.0	1.9	1.9	1.9	1.9	1.9	1.9
	-16.7	-17.0	2.1	2.1	2.0	2.0	2.0	2.0
	-14.7	-15.0	2.2	2.2	2.2	2.2	2.2	2.1
	-12.6	-13.0	2.3	2.3	2.3	2.3	2.3	2.3
	-10.5	-11.0	2.4	2.4	2.4	2.4	2.4	2.4
	-9.5	-10.0	2.5	2.4	2.4	2.4	2.4	2.4
	-8.5	-9.1	2.5	2.5	2.5	2.5	2.5	2.5
	-7.0	-7.6	2.6	2.6	2.6	2.6	2.6	2.6
	-5.0	-5.6	2.7	2.7	2.7	2.7	2.7	2.7
	-3.0	-3.7	2.8	2.8	2.8	2.8	2.8	2.8
	0.0	-0.7	3.0	3.0	3.0	3.0	3.0	2.8
	3.0	2.2	3.1	3.1	3.1	3.1	3.0	2.8
	5.0	4.1	3.3	3.2	3.2	3.1	3.0	2.8
	7.0	6.0	3.4	3.4	3.2	3.1	3.0	2.8
	9.0	7.9	3.5	3.4	3.2	3.1	3.0	2.8
11.0	9.8	3.6	3.4	3.2	3.1	3.0	2.8	
13.0	11.8	3.6	3.4	3.2	3.1	3.0	2.8	
15.0	13.7	3.6	3.4	3.2	3.1	3.0	2.8	
32	-19.8	-20.0	2.4	2.4	2.3	2.3	2.3	2.3
	-18.8	-19.0	2.4	2.4	2.4	2.4	2.4	2.4
	-16.7	-17.0	2.6	2.6	2.6	2.6	2.6	2.5
	-14.7	-15.0	2.7	2.7	2.7	2.7	2.7	2.7
	-12.6	-13.0	2.9	2.8	2.8	2.8	2.8	2.8
	-10.5	-11.0	3.0	3.0	3.0	3.0	3.0	3.0
	-9.5	-10.0	3.1	3.1	3.1	3.1	3.0	3.0
	-8.5	-9.1	3.1	3.1	3.1	3.1	3.1	3.1
	-7.0	-7.6	3.2	3.2	3.2	3.2	3.2	3.2
	-5.0	-5.6	3.4	3.4	3.4	3.4	3.4	3.4
	-3.0	-3.7	3.5	3.5	3.5	3.5	3.5	3.5
	0.0	-0.7	3.7	3.7	3.7	3.7	3.7	3.5
	3.0	2.2	3.9	3.9	3.9	3.9	3.7	3.5
	5.0	4.1	4.1	4.1	4.0	3.9	3.7	3.5
	7.0	6.0	4.2	4.2	4.0	3.9	3.7	3.5
	9.0	7.9	4.3	4.3	4.0	3.9	3.7	3.5
11.0	9.8	4.5	4.3	4.0	3.9	3.7	3.5	
13.0	11.8	4.5	4.3	4.0	3.9	3.7	3.5	
15.0	13.7	4.5	4.3	4.0	3.9	3.7	3.5	

VRV System * Indoor unit

Capacity tables (heating):

FXAQ

CA12A426

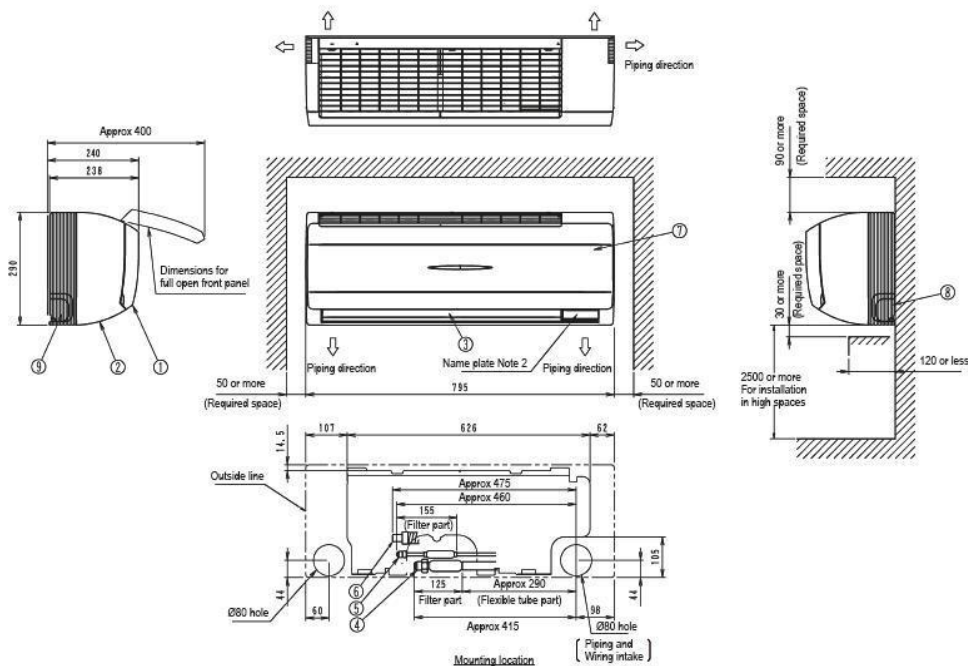
[50Hz]

Heating Capacity

Unit Size	Outdoor air temp		INDOOR AIR TEMP. : °CDB					
			16.0	18.0	20.0	21.0	22.0	24.0
	°CDB	°CWB	KW	KW	KW	KW	KW	KW
40	-19.8	-20.0	3.0	2.9	2.9	2.9	2.9	2.9
	-18.8	-19.0	3.0	3.0	3.0	3.0	3.0	3.0
	-16.7	-17.0	3.2	3.2	3.2	3.2	3.2	3.2
	-14.7	-15.0	3.4	3.4	3.4	3.4	3.4	3.4
	-12.6	-13.0	3.6	3.6	3.6	3.5	3.5	3.5
	-10.5	-11.0	3.7	3.7	3.7	3.7	3.7	3.7
	-9.5	-10.0	3.8	3.8	3.8	3.8	3.8	3.8
	-8.5	-9.1	3.9	3.9	3.9	3.9	3.9	3.9
	-7.0	-7.6	4.0	4.0	4.0	4.0	4.0	4.0
	-5.0	-5.6	4.2	4.2	4.2	4.2	4.2	4.2
	-3.0	-3.7	4.4	4.4	4.4	4.4	4.4	4.4
	0.0	-0.7	4.7	4.6	4.6	4.6	4.6	4.4
	3.0	2.2	4.9	4.9	4.9	4.8	4.7	4.4
	5.0	4.1	5.1	5.1	5.0	4.8	4.7	4.4
	7.0	6.0	5.2	5.2	5.0	4.8	4.7	4.4
9.0	7.9	5.4	5.3	5.0	4.8	4.7	4.4	
11.0	9.8	5.6	5.3	5.0	4.8	4.7	4.4	
13.0	11.8	5.6	5.3	5.0	4.8	4.7	4.4	
15.0	13.7	5.6	5.3	5.0	4.8	4.7	4.4	
50	-19.8	-20.0	3.7	3.7	3.7	3.7	3.7	3.7
	-18.8	-19.0	3.8	3.8	3.8	3.8	3.8	3.8
	-16.7	-17.0	4.1	4.0	4.0	4.0	4.0	4.0
	-14.7	-15.0	4.3	4.3	4.3	4.2	4.2	4.2
	-12.6	-13.0	4.5	4.5	4.5	4.5	4.5	4.5
	-10.5	-11.0	4.7	4.7	4.7	4.7	4.7	4.7
	-9.5	-10.0	4.8	4.8	4.8	4.8	4.8	4.8
	-8.5	-9.1	4.9	4.9	4.9	4.9	4.9	4.9
	-7.0	-7.6	5.1	5.1	5.1	5.1	5.1	5.1
	-5.0	-5.6	5.3	5.3	5.3	5.3	5.3	5.3
	-3.0	-3.7	5.5	5.5	5.5	5.5	5.5	5.5
	0.0	-0.7	5.9	5.9	5.8	5.8	5.8	5.5
	3.0	2.2	6.2	6.2	6.2	6.1	5.9	5.5
	5.0	4.1	6.4	6.4	6.3	6.1	5.9	5.5
	7.0	6.0	6.6	6.6	6.3	6.1	5.9	5.5
9.0	7.9	6.8	6.7	6.3	6.1	5.9	5.5	
11.0	9.8	7.0	6.7	6.3	6.1	5.9	5.5	
13.0	11.8	7.1	6.7	6.3	6.1	5.9	5.5	
15.0	13.7	7.1	6.7	6.3	6.1	5.9	5.5	
63	-19.8	-20.0	4.7	4.7	4.7	4.7	4.7	4.7
	-18.8	-19.0	4.9	4.9	4.8	4.8	4.8	4.8
	-16.7	-17.0	5.1	5.1	5.1	5.1	5.1	5.1
	-14.7	-15.0	5.4	5.4	5.4	5.4	5.4	5.4
	-12.6	-13.0	5.7	5.7	5.7	5.7	5.7	5.7
	-10.5	-11.0	6.0	6.0	6.0	6.0	6.0	5.9
	-9.5	-10.0	6.1	6.1	6.1	6.1	6.1	6.1
	-8.5	-9.1	6.3	6.3	6.2	6.2	6.2	6.2
	-7.0	-7.6	6.5	6.5	6.4	6.4	6.4	6.4
	-5.0	-5.6	6.8	6.7	6.7	6.7	6.7	6.7
	-3.0	-3.7	7.0	7.0	7.0	7.0	7.0	7.0
	0.0	-0.7	7.5	7.4	7.4	7.4	7.4	7.0
	3.0	2.2	7.9	7.8	7.8	7.7	7.5	7.0
	5.0	4.1	8.1	8.1	8.0	7.7	7.5	7.0
	7.0	6.0	8.4	8.4	8.0	7.7	7.5	7.0
9.0	7.9	8.7	8.5	8.0	7.7	7.5	7.0	
11.0	9.8	8.9	8.5	8.0	7.7	7.5	7.0	
13.0	11.8	9.0	8.5	8.0	7.7	7.5	7.0	
15.0	13.7	9.0	8.5	8.0	7.7	7.5	7.0	

Dimensional drawings:

FXAQ15-32PA



3D065064A

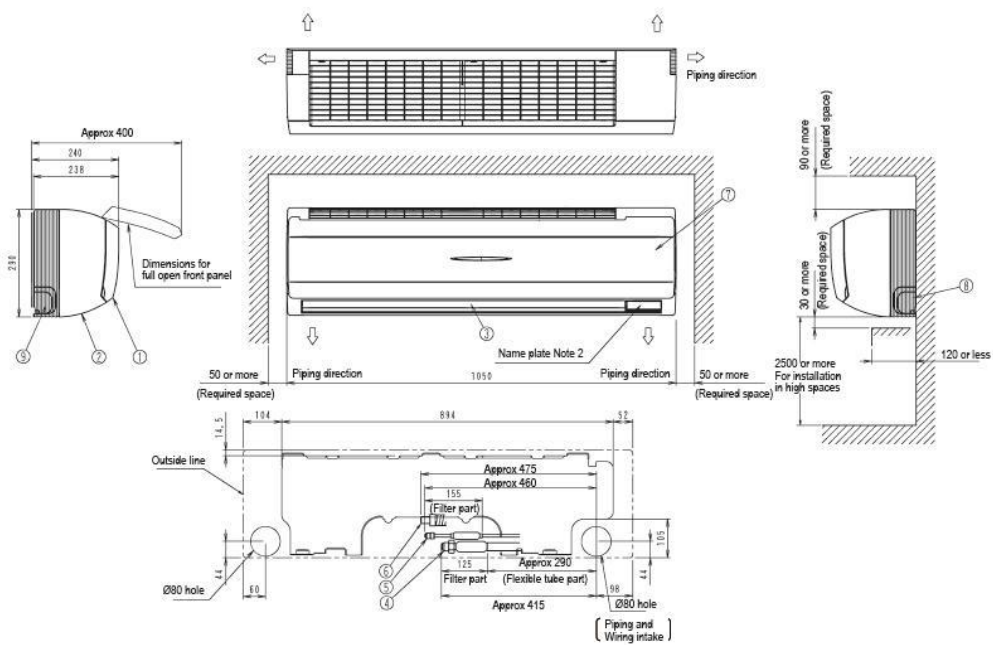
Nr	Name	Description
1	Front panel	
2	Front grill	
3	Air outlet	
4	Gas pipe	Ø12.7mm Flare connection
5	Liquid pipe	Ø6.4mm Flare connection
6	Drain hose	VP13 (External dia. Ø18)
7	Grounding terminal	M4
8	Right side pipe connection hole	
9	Left side pipe connection hole	

NOTES

- 1 Location of unit's of Name Plate: Right side surface of casing.
- 2 In case of using infrared remote control, this position will be a signal receiver. Refer to the drawing of infrared remote control in detail.

Dimensional drawings:

FXAQ40-50PA



Mounting location

3D065065A

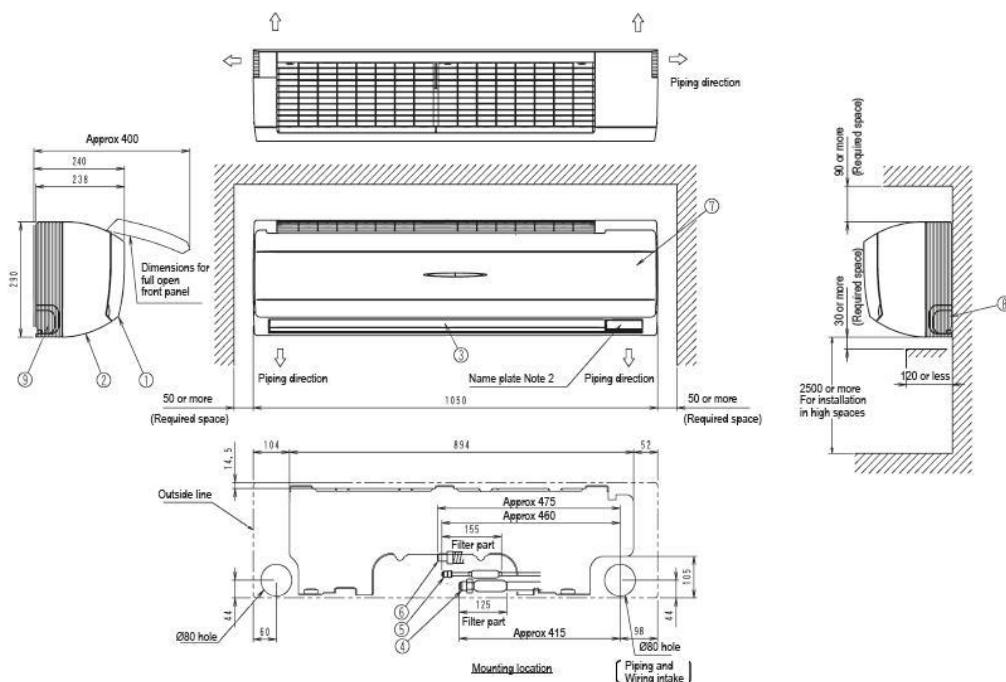
Nr	Name	Description
1	Front panel	
2	Front grill	
3	Air outlet	
4	Gas pipe	Ø12.7mm Flare connection
5	Liquid pipe	Ø6.4mm Flare connection
6	Drain hose	VP13 (External dia. Ø18)
7	Grounding terminal	M4
8	Right side pipe connection hole	
9	Left side pipe connection hole	

NOTES

- 1 Location of unit's of Name Plate: Right side surface of casing.
- 2 In case of using infrared remote control, this position will be a signal receiver. Refer to the drawing of infrared remote control in detail.

Dimensional drawings:

FXAQ63PA



3D065066A

Nr	Name	Description
1	Front panel	
2	Front grill	
3	Air outlet	
4	Gas pipe	Ø15.9mm Flare connection
5	Liquid pipe	Ø9.5mm Flare connection
6	Drain hose	VP13 (External dia. Ø18)
7	Grounding terminal	M4
8	Right side pipe connection hole	
9	Left side pipe connection hole	

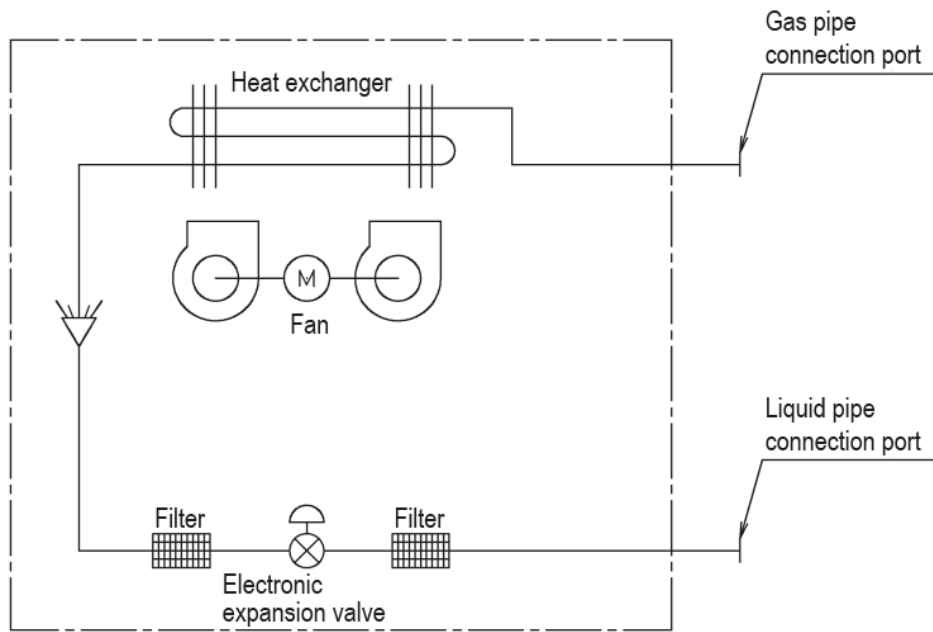
NOTES

- 1 Location of unit's of Name Plate: Right side surface of casing.
- 2 In case of using infrared remote control, this position will be a signal receiver. Refer to the drawing of infrared remote control in detail.

Indoor unit * Wall mounted unit * FXAQ-PA

Piping diagrams:

FXAQ-PA

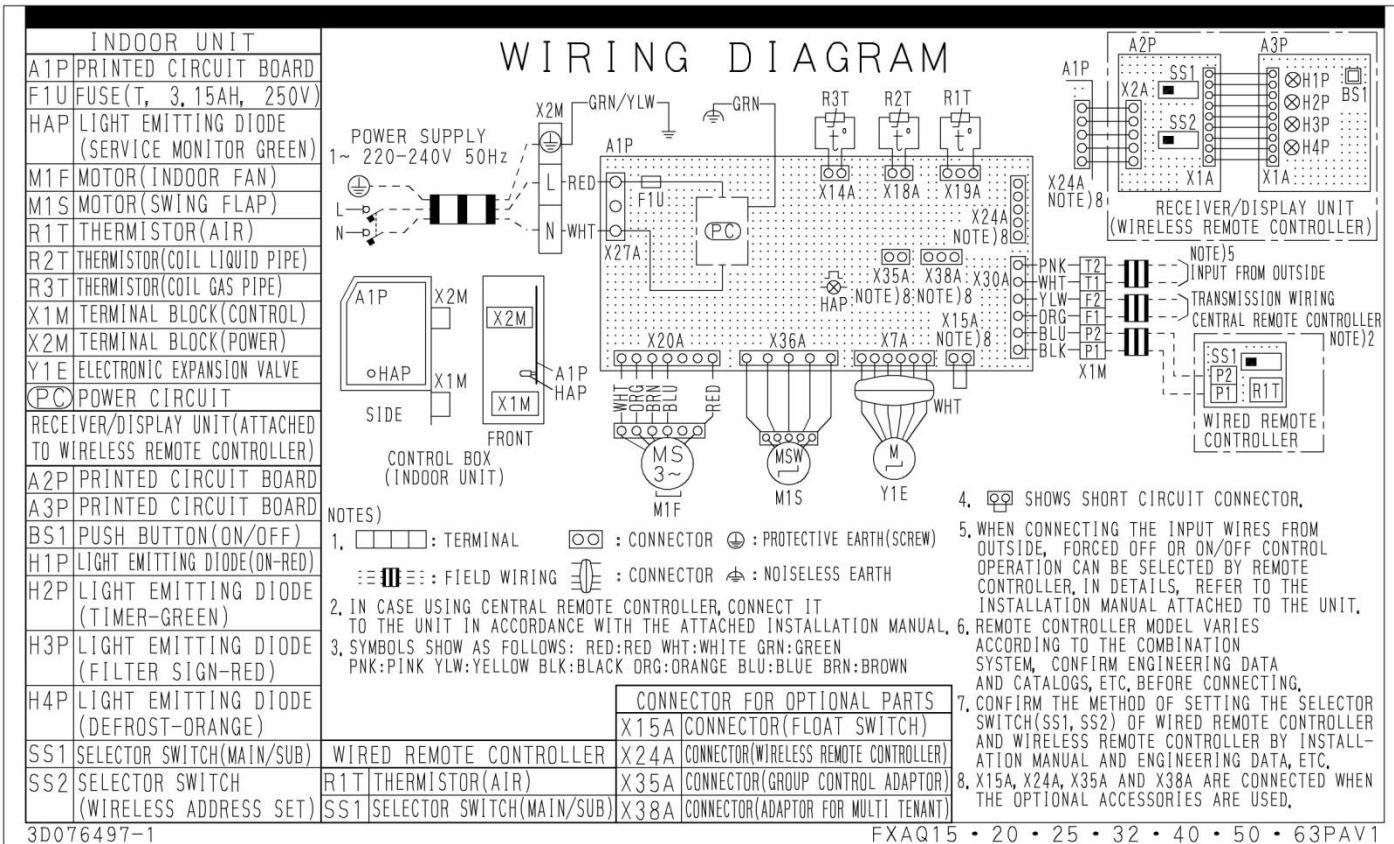


APPLICABLE MODEL

FXC, FXM, FXL, FXN, FXH, FXK, FXS, FJSP, CBXLS, FXSP, FXCP, FZSP, FZSP, FXNP, FJNP, FHQ, FXA, FXMQ, FBQ, FXAQ

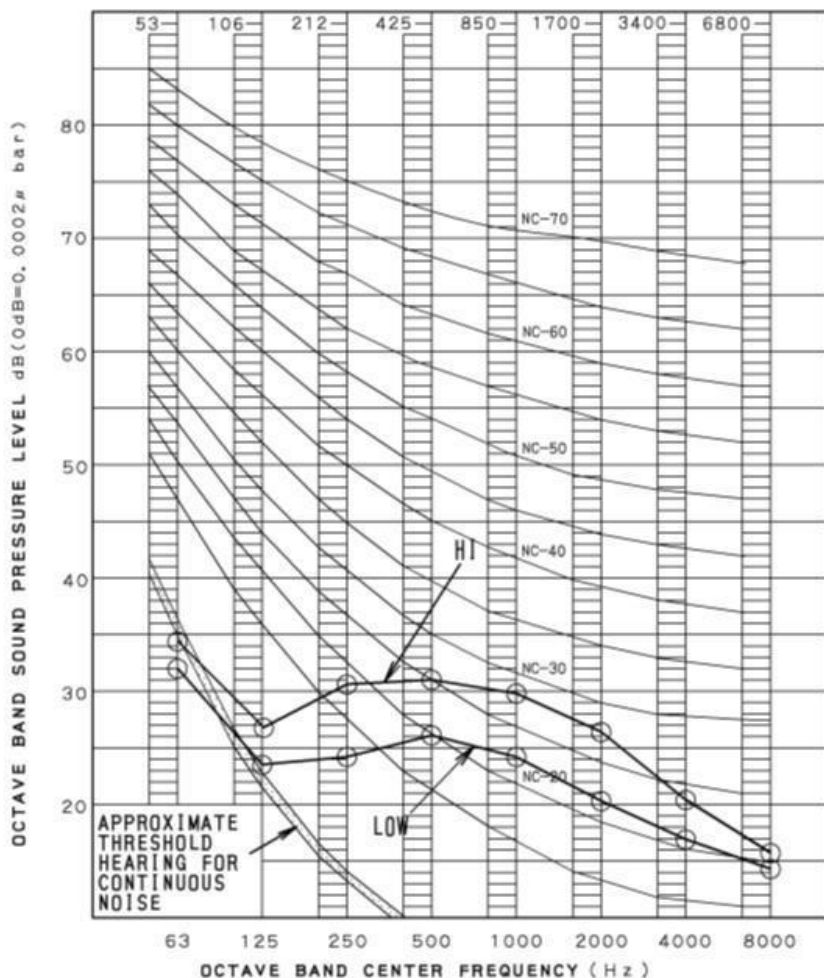
4D034245G

Wiring diagram:



Indoor unit * Wall mounted unit * FXAQ-PA

Sound data:



OVER ALL (dB)

SCALE	MODE	
	HI	LOW
A	34.0	29.0
C	38.3	34.5

(B, G, N IS ALREADY RECTIFIED)

MEASURING PLACE

ANECHOIC CHAMBER

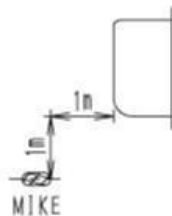
OPERATING CONDITIONS

POWER SOURCE 220-240V 50Hz

COOLING RETURN AIR TEMPERATURE: 27°C DB, 19°C WB
 OUTDOOR TEMPERATURE: 35°C DB, 24°C WB

HEATING RETURN AIR TEMPERATURE: 20°C DB, 15°C WB
 OUTDOOR TEMPERATURE: 7°C DB, 6°C WB

LOCATION OF MICROPHONE



NOTE: Operation noise differs with operation and ambient conditions.

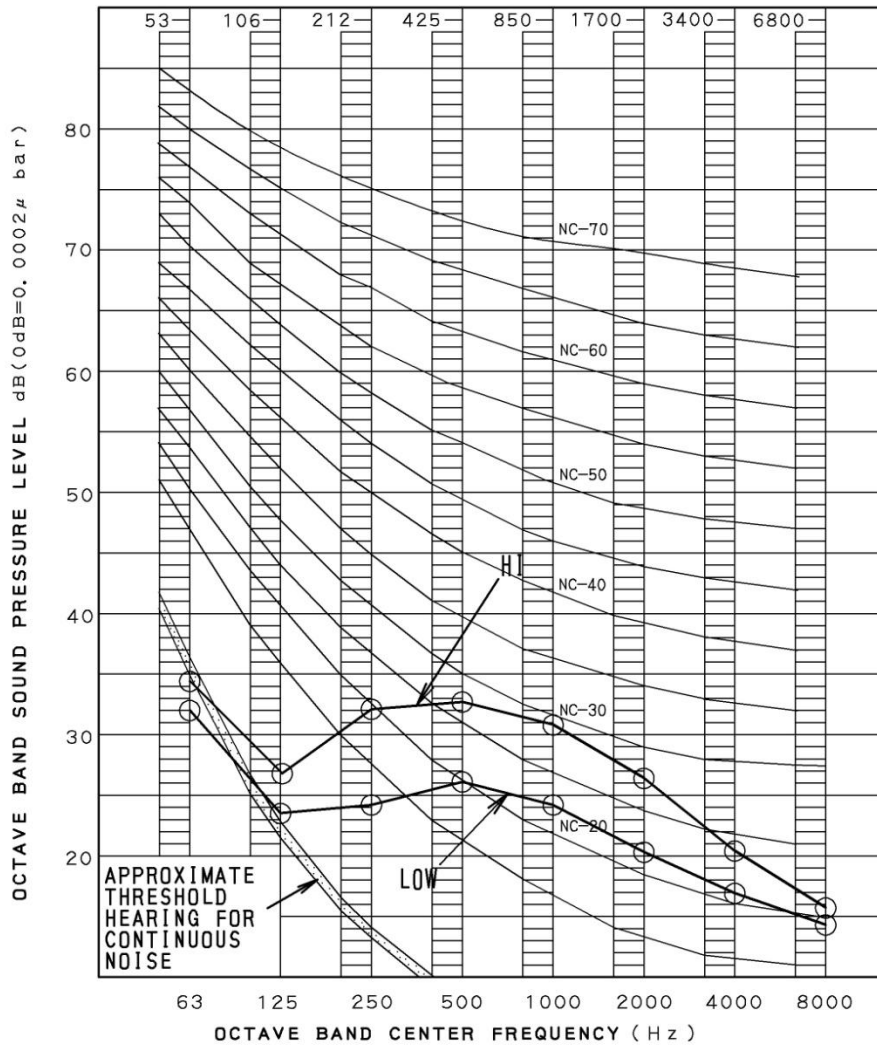
FXAQ15PAV1

名 VRV AIR CONDITIONNER INDOOR UNIT
 称 WALL MOUNTED TYPE

FXAQ15PAV1

Indoor unit * Wall mounted unit * FXAQ-PA

Sound data:



OVER ALL (dB)

SCALE	MODE	
	HI	LOW
A	35.0	29.0
C	39.5	34.5

(B, G, N IS ALREADY RECTIFIED)

MEASURING PLACE

ANECHOIC CHAMBER

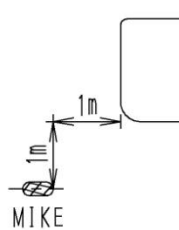
OPERATING CONDITIONS

POWER SOURCE 220-240V 50Hz

COOLING RETURN AIR TEMPERATURE: 27°C DB, 19°C WB
OUTDOOR TEMPERATURE: 35°C DB, 24°C WB

HEATING RETURN AIR TEMPERATURE: 20°C DB, 15°C WB
OUTDOOR TEMPERATURE: 7°C DB, 6°C WB

LOCATION OF MICROPHONE



NOTE: Operation noise differs with operation and ambient conditions.

FXAQ20PAV1

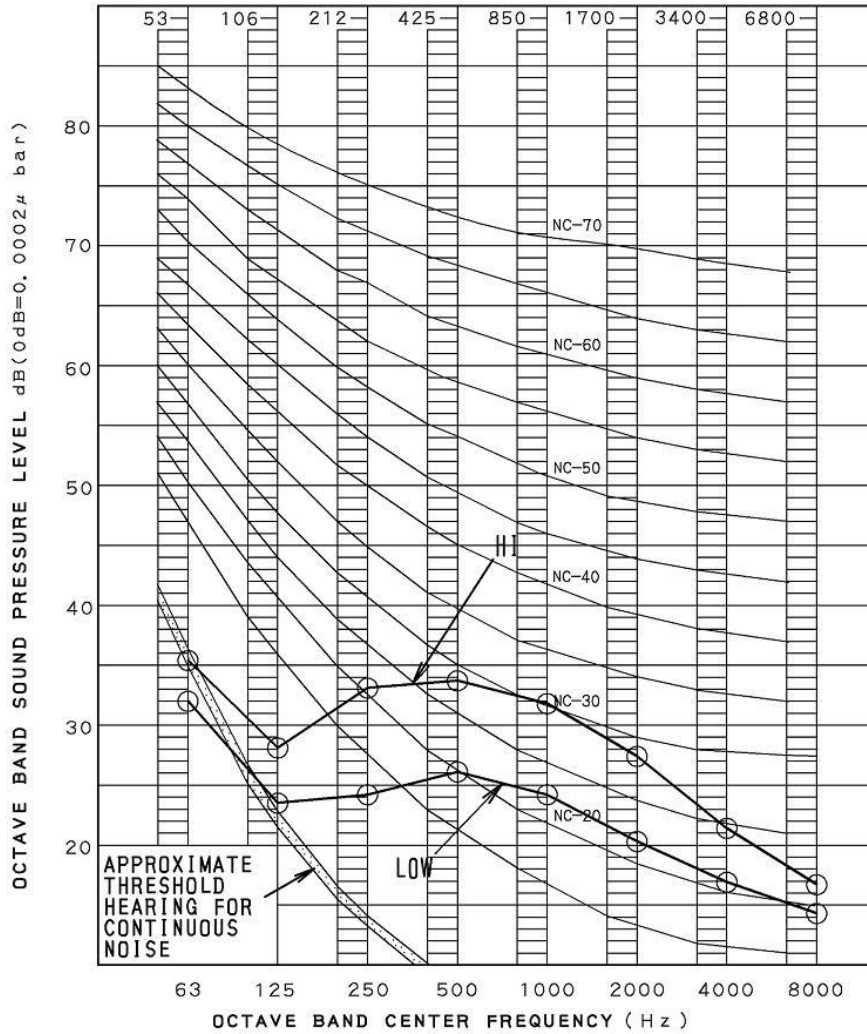
VRV AIR CONDITIONNER INDOOR UNIT
WALL MOUNTED TYPE

FXAQ20PAV1

VRV System * Indoor unit

Indoor unit * Wall mounted unit * FXAQ-PA

Sound data:



OVER ALL (dB)

SCALE	M O D E	
	HI	LOW
A	36.0	29.0
C	40.5	34.5

(B, G, N IS ALREADY RECTIFIED)

MEASURING PLACE

ANECHOIC CHAMBER

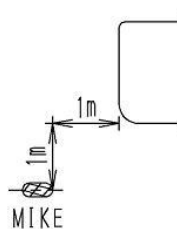
OPERATING CONDITIONS

POWER SOURCE 220-240V 50Hz

COOLING RETURN AIR TEMPERATURE: 27°C DB, 19°C WB
 OUTDOOR TEMPERATURE: 35°C DB, 24°C WB

HEATING RETURN AIR TEMPERATURE: 20°C DB, 15°C WB
 OUTDOOR TEMPERATURE: 7°C DB, 6°C WB

LOCATION OF MICROPHONE



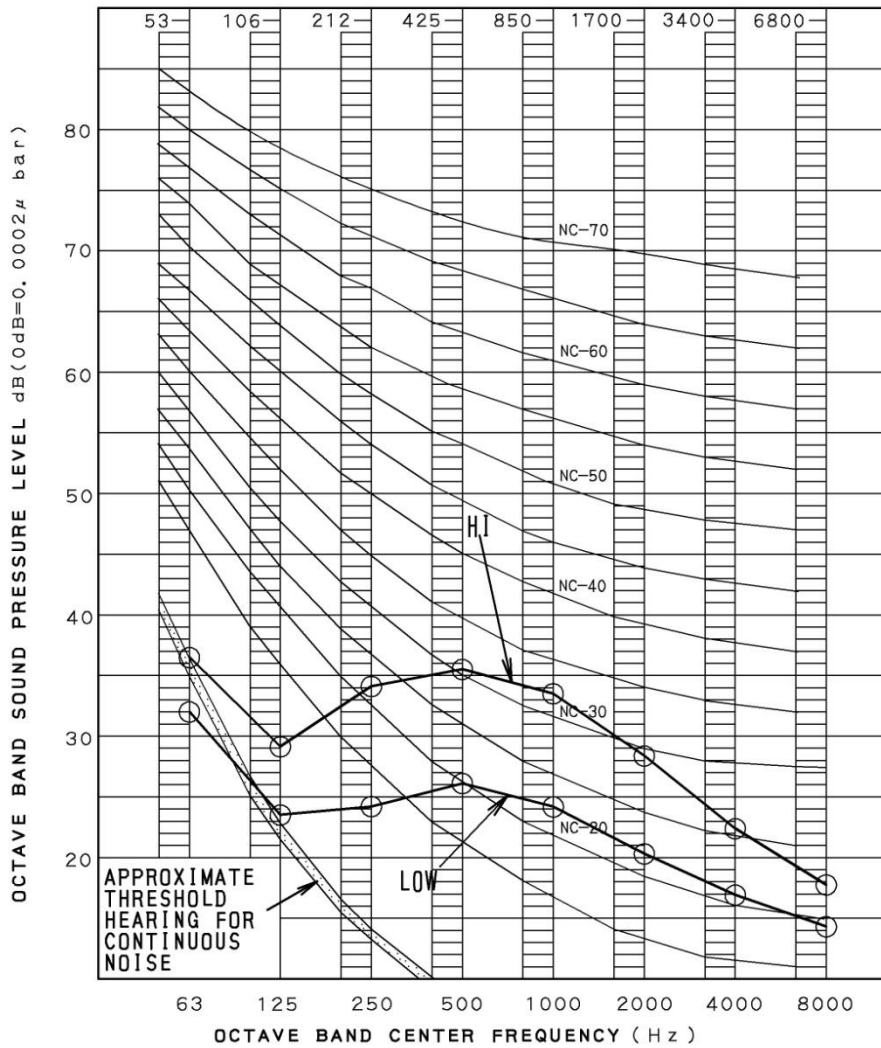
NOTE: Operation noise differs with operation and ambient conditions.

FXAQ25PAV1

名 VRV AIR CONDITIONER INDOOR UNIT
 WALL MOUNTED TYPE

FXAQ25PAV1

Sound data:



OVER ALL (dB)

SCALE	M O D E	
	HI	LOW
A	37.5	29.0
C	43.0	34.5

(B, G, N IS ALREADY RECTIFIED)

MEASURING PLACE

ANECHOIC CHAMBER

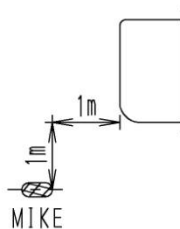
OPERATING CONDITIONS

POWER SOURCE 220-240V 50Hz

COOLING RETURN AIR TEMPERATURE: 27°C DB, 19°C WB
OUTDOOR TEMPERATURE: 35°C DB, 24°C WB

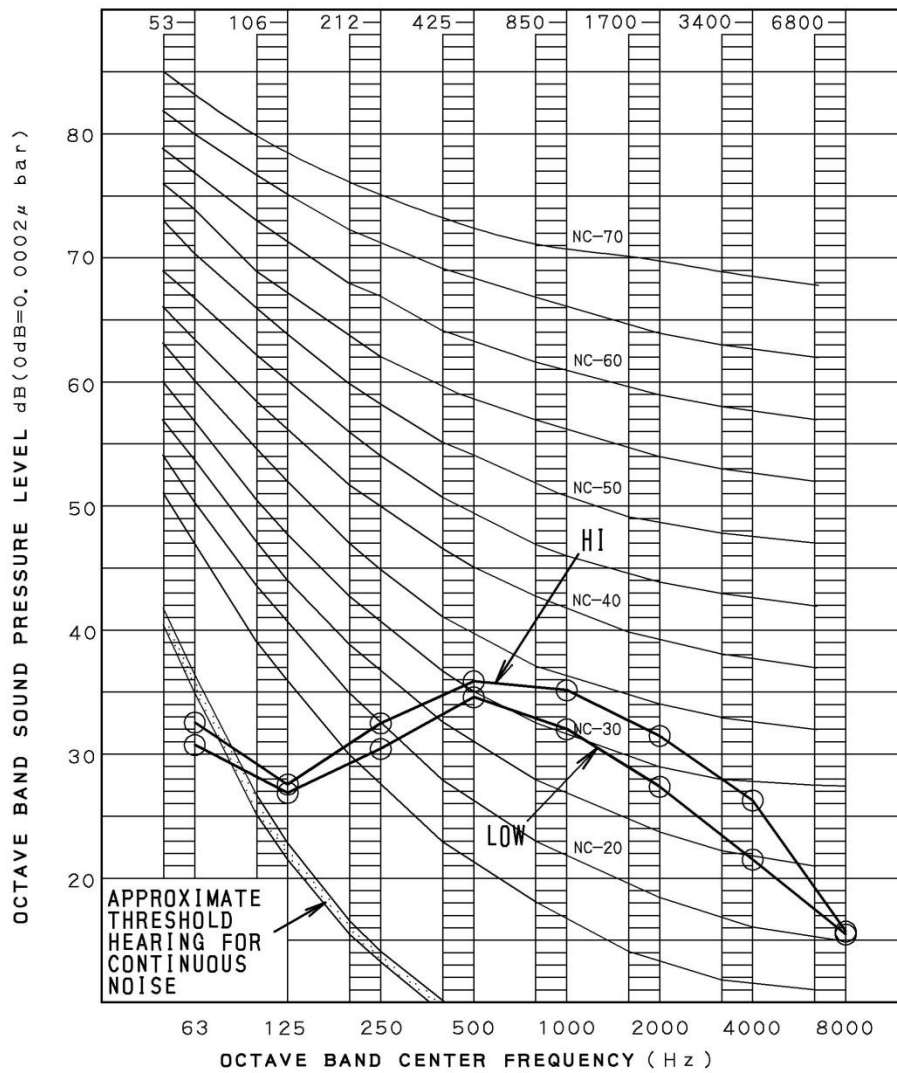
HEATING RETURN AIR TEMPERATURE: 20°C DB, 15°C WB
OUTDOOR TEMPERATURE: 7°C DB, 6°C WB

LOCATION OF MICROPHONE



NOTE: Operation noise differs with operation and ambient conditions.

Sound data:



OVER ALL (dB)

SCALE	M O D E	
	HI	LOW
A	39.0	34.0
C	41.0	39.0

(B, G, N IS ALREADY RECTIFIED)

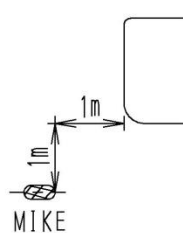
MEASURING PLACE

ANECHOIC CHAMBER

OPERATING CONDITIONS

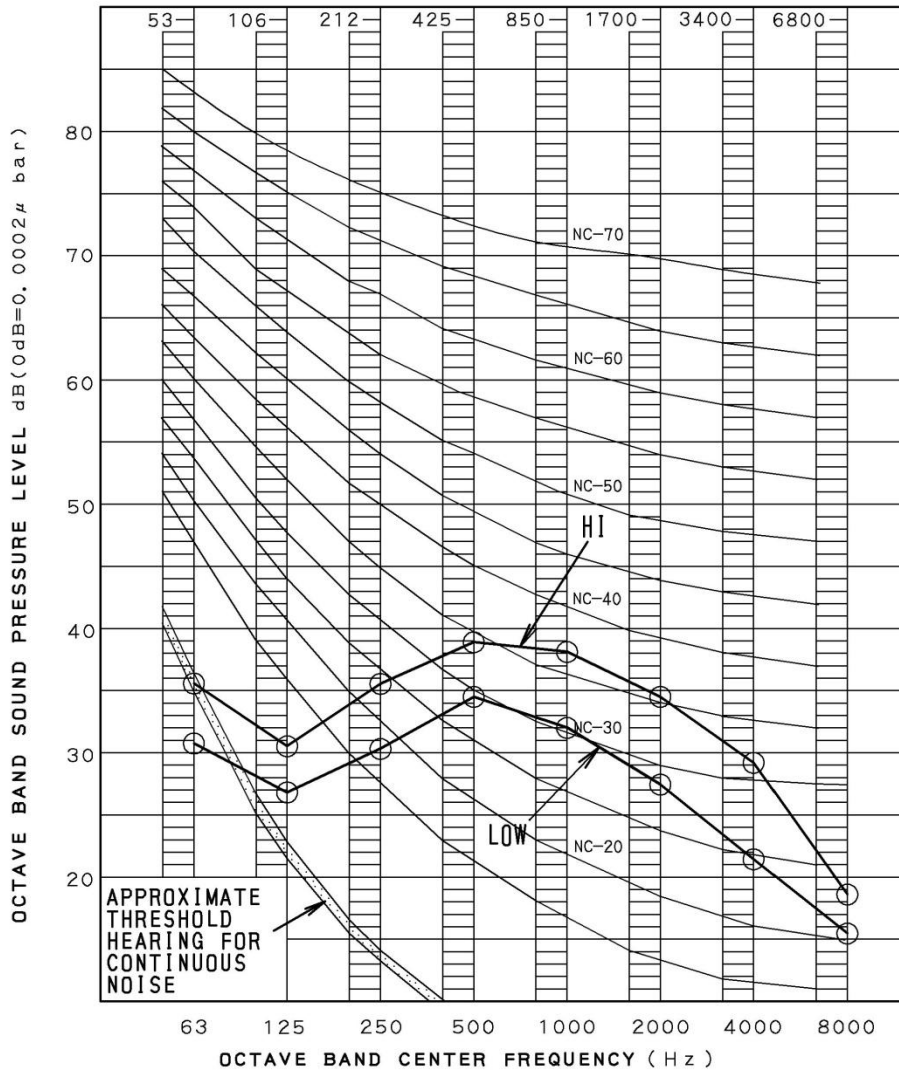
POWER SOURCE 220~240V 50Hz
COOLING RETURN AIR TEMPERATURE: 27°C DB, 19°C WB
 OUTDOOR TEMPERATURE: 35°C DB, 24°C WB
HEATING RETURN AIR TEMPERATURE: 20°C DB, 15°C WB
 OUTDOOR TEMPERATURE: 7°C DB, 6°C WB

LOCATION OF MICROPHONE



NOTE: Operation noise differs with operation and ambient conditions.

Sound data:



OVER ALL (dB)

SCALE	M O D E	
	HI	LOW
A	42.0	36.0
C	44.0	39.0

(B, G, N IS ALREADY RECTIFIED)

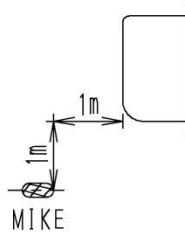
MEASURING PLACE

ANECHOIC CHAMBER

OPERATING CONDITIONS

POWER SOURCE 220-240V 50Hz
 COOLING RETURN AIR TEMPERATURE: 27°C DB, 19°C WB
 OUTDOOR TEMPERATURE: 35°C DB, 24°C WB
 HEATING RETURN AIR TEMPERATURE: 20°C DB, 15°C WB
 OUTDOOR TEMPERATURE: 7°C DB, 6°C WB

LOCATION OF MICROPHONE



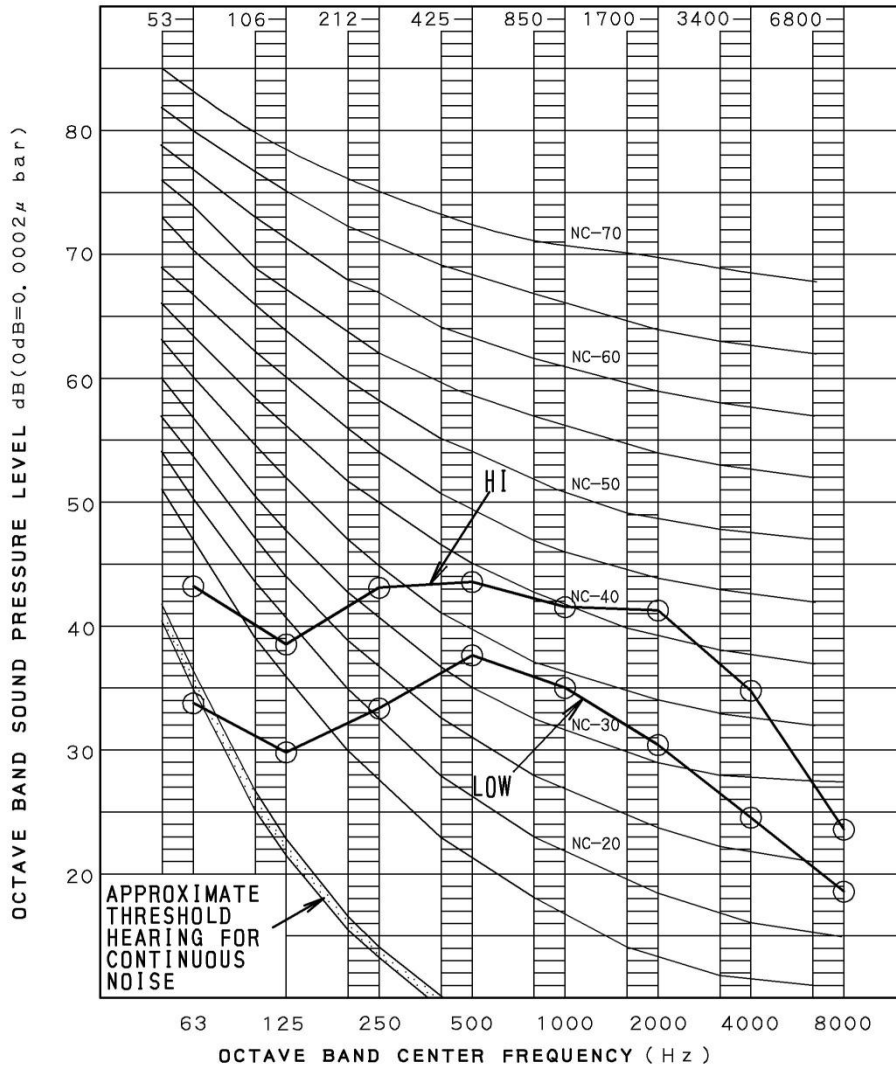
NOTE: Operation noise differs with operation and ambient conditions.

FXAQ50PAV1

名 VRV AIR CONDITIONNER INDOOR UNIT
 WALL MOUNTED TYPE

FXAQ50PAV1

Sound data:



OVER ALL (dB)

SCALE	MODE	
	HI	LOW
A	47.0	39.0
C	49.8	42.0

(B, G, N IS ALREADY RECTIFIED)

MEASURING PLACE

ANECHOIC CHAMBER

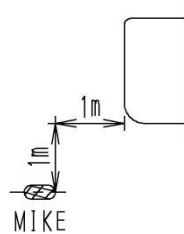
OPERATING CONDITIONS

POWER SOURCE 220~240V 50Hz

COOLING RETURN AIR TEMPERATURE: 27°C DB, 19°C WB
 OUTDOOR TEMPERATURE: 35°C DB, 24°C WB

HEATING RETURN AIR TEMPERATURE: 20°C DB, 15°C WB
 OUTDOOR TEMPERATURE: 7°C DB, 6°C WB

LOCATION OF MICROPHONE



NOTE: Operation noise differs with operation and ambient conditions.