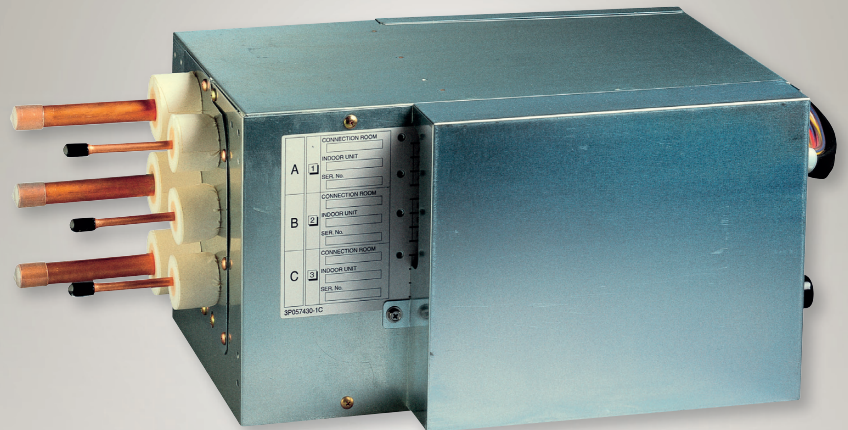


Air Conditioners

Technical Data

Branch Provider



EEDEN11-209

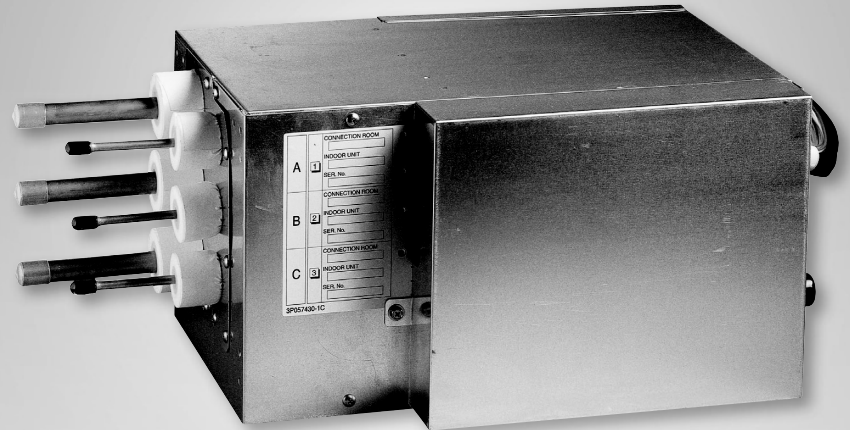


Air Conditioners

Technical Data



Branch Provider



EEDEN11-209

BPMKS-B

TABLE OF CONTENTS

BPMKS-B

1	Specifications	2
	Technical Specifications	2
	Electrical Specifications	2
2	Dimensional drawings	3
	Dimensional Drawings	3
3	Centre of gravity	4
	Centre of Gravity	4
4	Piping diagrams	5
	Piping Diagrams	5
5	Wiring diagrams	6
	Wiring Diagrams - Single Phase	6

1 Specifications

1

1-1 Technical Specifications				BPMKS967B2B	BPMKS967B3B	
Connectable indoor unit type				20 class - 71 class		
Application				For 2 rooms	For 3 rooms	
Combination	Min.	kW		2.0		
	Max.	kW		14.2	20.8	
Power input	Nom.	kW		0.010		
Casing	Colour			Unpainted		
Dimensions	Unit	HeightxWidthxDepth	mm	180x650x350		
	Packed unit	HeightxWidthxDepth	mm	257x738x427		
Weight	Unit	kg		7.5	8	
	Packed unit	kg		11	12	
Refrigerant	Type			R-410A		
Piping connections	Outdoor unit	Liquid	Quantity	1		
			ID	mm	9.5	
		Gas	Quantity	mm	1	
			ID	mm	19.1	
	Indoor unit	Liquid	Quantity	2	3	
			ID	mm	6.4	
		Gas	Quantity	mm	2	3
			ID	mm	15.9	
	Drain	ID	mm	Drain processingless		
	Heat insulation				Both liquid and gas pipes	
Product country display				No display		

Standard Accessories : Binding band; Quantity : 2;

Standard Accessories : Heat insulation; Quantity : 3;

Standard Accessories : Screws (M4x8); Quantity : 8;

Standard Accessories : Hanger metal; Quantity : 4;

Standard Accessories : Reducer for indoor unit side; Liquid diameter 9.5; Quantity : 2;

Standard Accessories : Reducer for indoor unit side; Liquid diameter 12.7; Quantity : 2;

Standard Accessories : Reducer for indoor unit side; Gas diameter 9.52; Quantity : 1;

Standard Accessories : Reducer for outdoor unit side; Liquid diameter 6.4; Quantity : 1;

Standard Accessories : Reducer for outdoor unit side; Gas diameter 19.1; Quantity : 1;

Standard Accessories : Reducer for outdoor unit side; Gas diameter 15.9; Quantity : 1;

Standard Accessories : Reducer for outdoor unit side; Gas diameter 12.7; Quantity : 1;

Standard Accessories : Installation manual; Quantity : 1;

1-2 Electrical Specifications				BPMKS967B2B	BPMKS967B3B
Power supply	Frequency	Hz		50	
	Voltage	V		230	
Current	Nominal running current (RLA)	A		0.05	
Wiring connections	For power supply	Quantity	3		
		Remark	Earth wire included		
	Between outdoor and BP unit	Quantity	2		
		Remark	For DIII transmission		
	Between indoor and BP unit	Quantity	4		
		Remark	Earth wire included		

2

2 Dimensional drawings

2 - 1 Dimensional Drawings

BPMKS967B2

Standard accessories (Caution 5.)

G	68	163
G	58	153
G	153	258

Installation restrictions

(servicing space) Min390 (installation and service space) (servicing space) Min390

(servicing space) Min390 (servicing space) Min390

The opening for inspection Servicing is needed opening of 650mm square for service and maintenance.

NOTES

- No drain treatment necessary.
- This unit can be installed so that F or R side faces forward. (it choosed by servicing direction).
- The piping for the indoor unit and outdoor unit can be freely installed to directions of A, B, C or D.
- This unit can be installed with either suspending from the ceiling or mounting on wall.

CAUTIONS

- This unit must be installed so that side of E is facing up.
- The slant of face E must be within $\pm 5^\circ$ for front and rear, right and left.
- Before mounting on the wall, installation becomes easy by hanging this unit on screw for temporary fixing. (2 places)
- At the time of brazing the pipes, wrap the pipes with sufficient wet clothes. And after brazing also, must cool piping enough.
- Cut the piping of the standard accessories in order to match the indoor unit's piping diameter.

3D048412A

2

BPMKS967B3

Standard accessories (Caution 5.)

G	58	153	258
G	58	153	258
G	153	258	353

Installation restrictions

(servicing space) Min460 (installation and service space) (servicing space) Min390

(servicing space) Min390 (servicing space) Min390

The opening for inspection Servicing is needed opening of 650mm square for service and maintenance.

NOTES

- No drain treatment necessary.
- This unit can be installed so that F or R side faces forward. (it choosed by servicing direction).
- The piping for the indoor unit and outdoor unit can be freely installed to directions of A, B, C or D.
- This unit can be installed with either suspending from the ceiling or mounting on wall.

CAUTIONS

- This unit must be installed so that side of E is facing up.
- The slant of face E must be within $\pm 5^\circ$ for front and rear, right and left.
- Before mounting on the wall, installation becomes easy by hanging this unit on screw for temporary fixing. (2 places)
- At the time of brazing the pipes, wrap the pipes with sufficient wet clothes. And after brazing also, must cool piping enough.
- Cut the piping of the standard accessories in order to match the indoor unit's piping diameter.

3D048411A

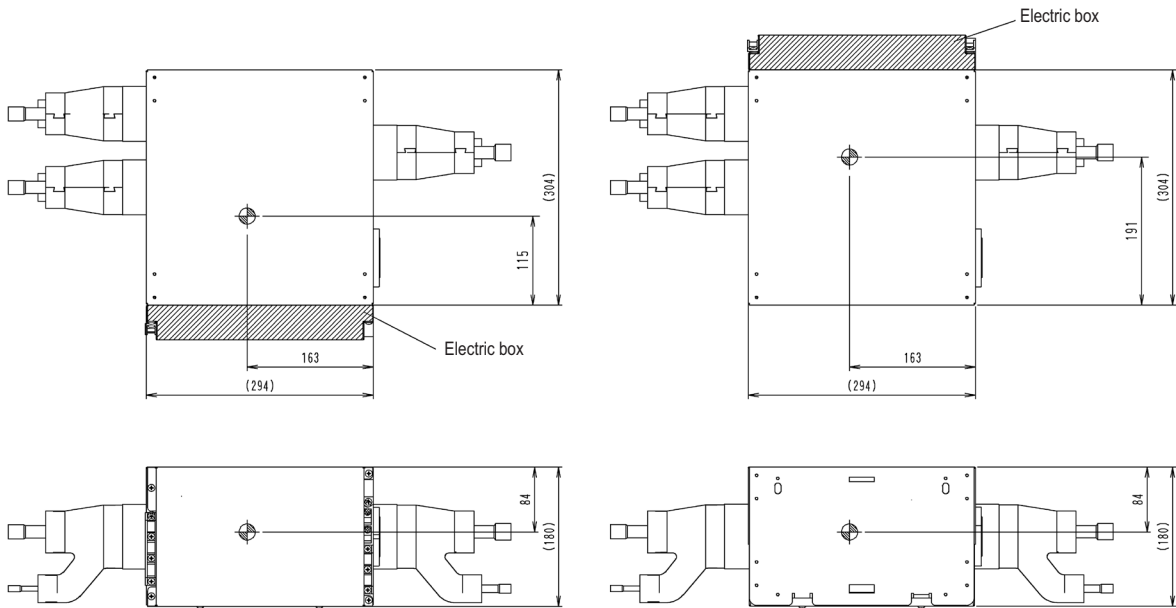
3

3 Centre of gravity

3 - 1 Centre of Gravity

3

BPMKS967B2



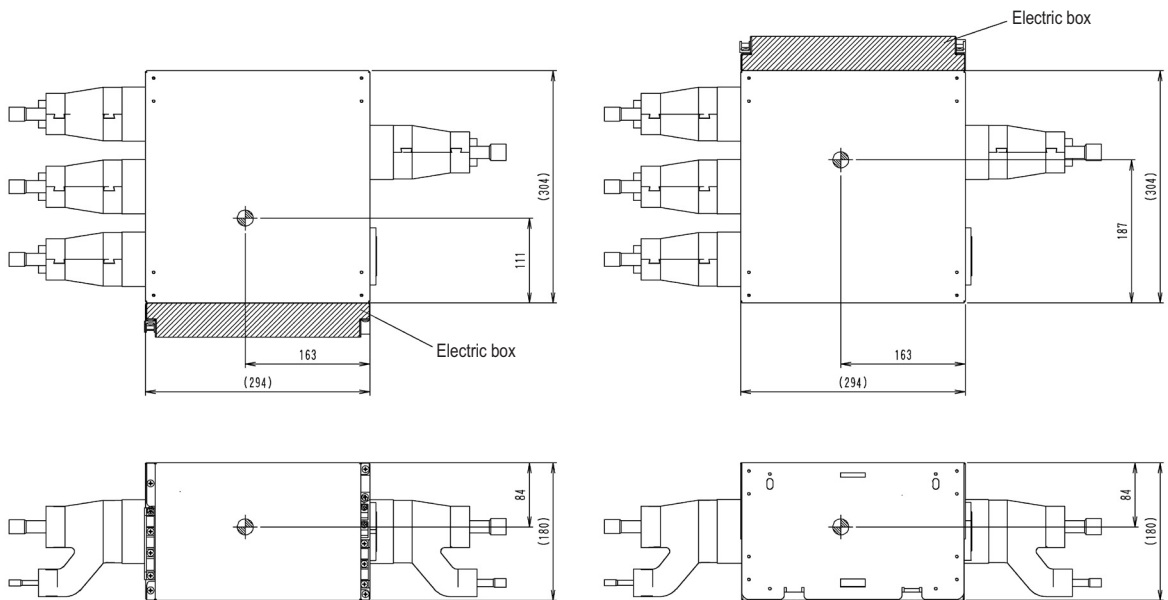
Setting for shipment

When the electric box is attached to the other side

The center of gravity shifts with the location of the electric box

3D048410A

BPMKS967B3



Setting for shipment

When the electric box is attached to the other side

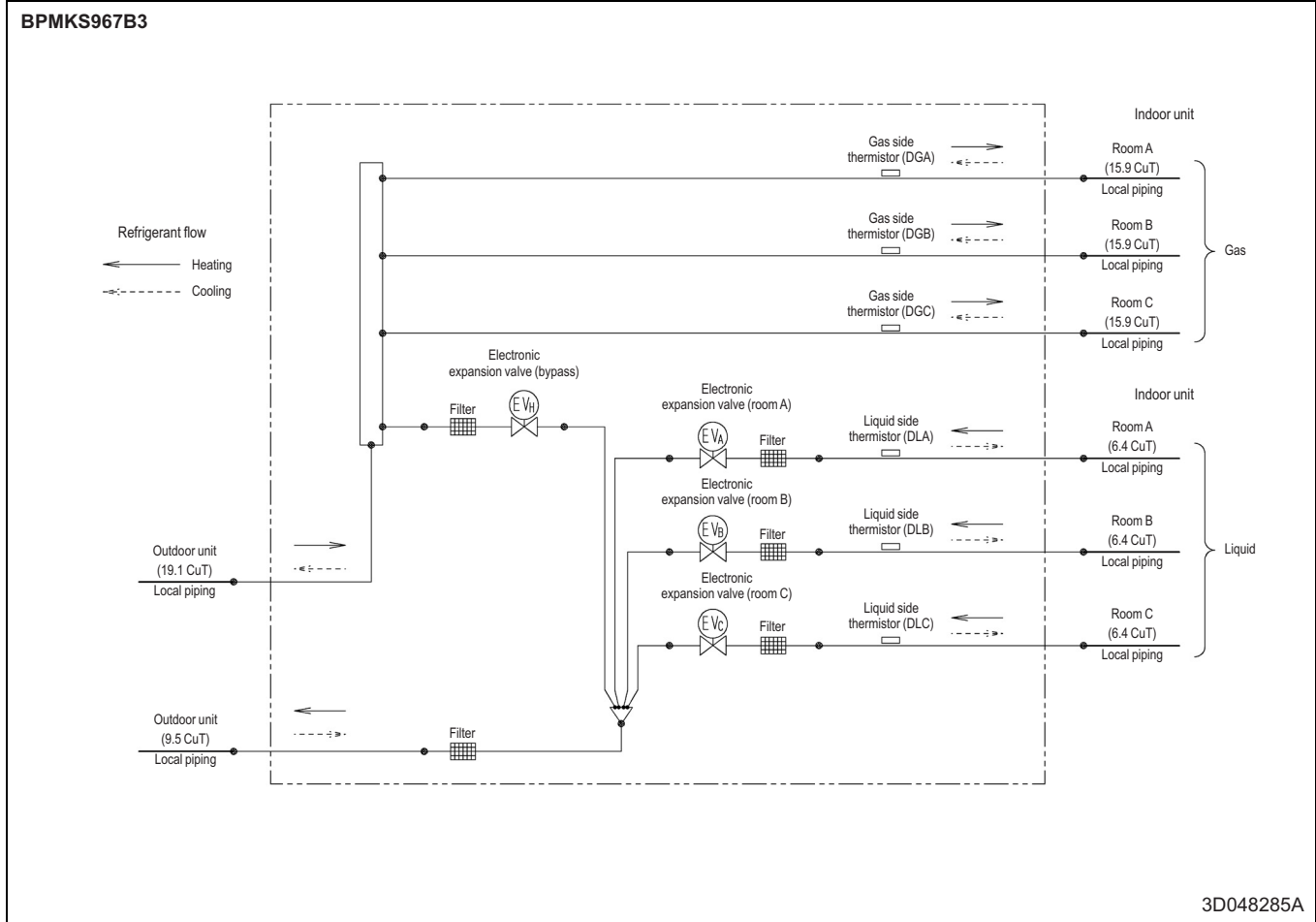
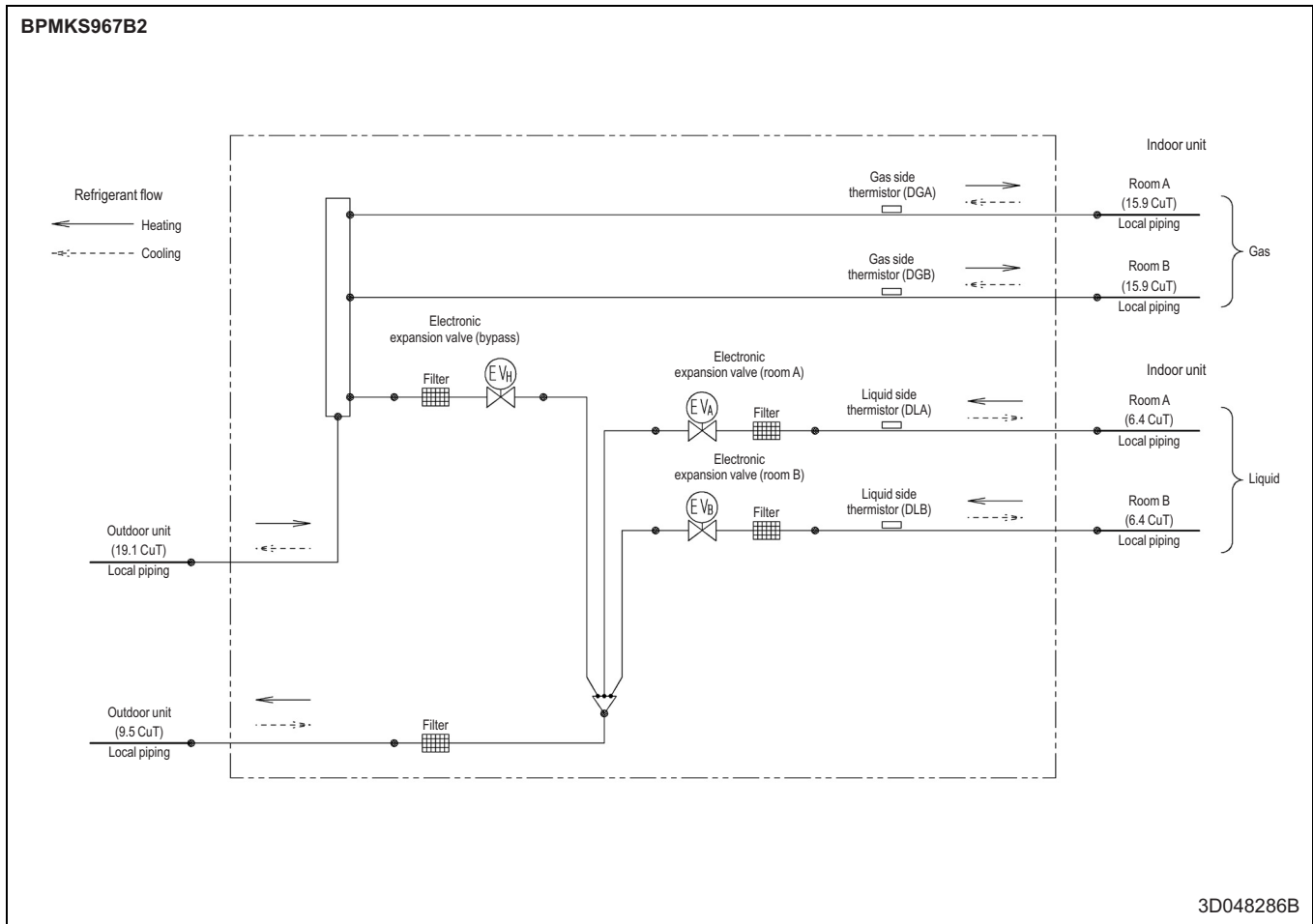
The center of gravity shifts with the location of the electric box

3D048409A

4

4 Piping diagrams

4 - 1 Piping Diagrams

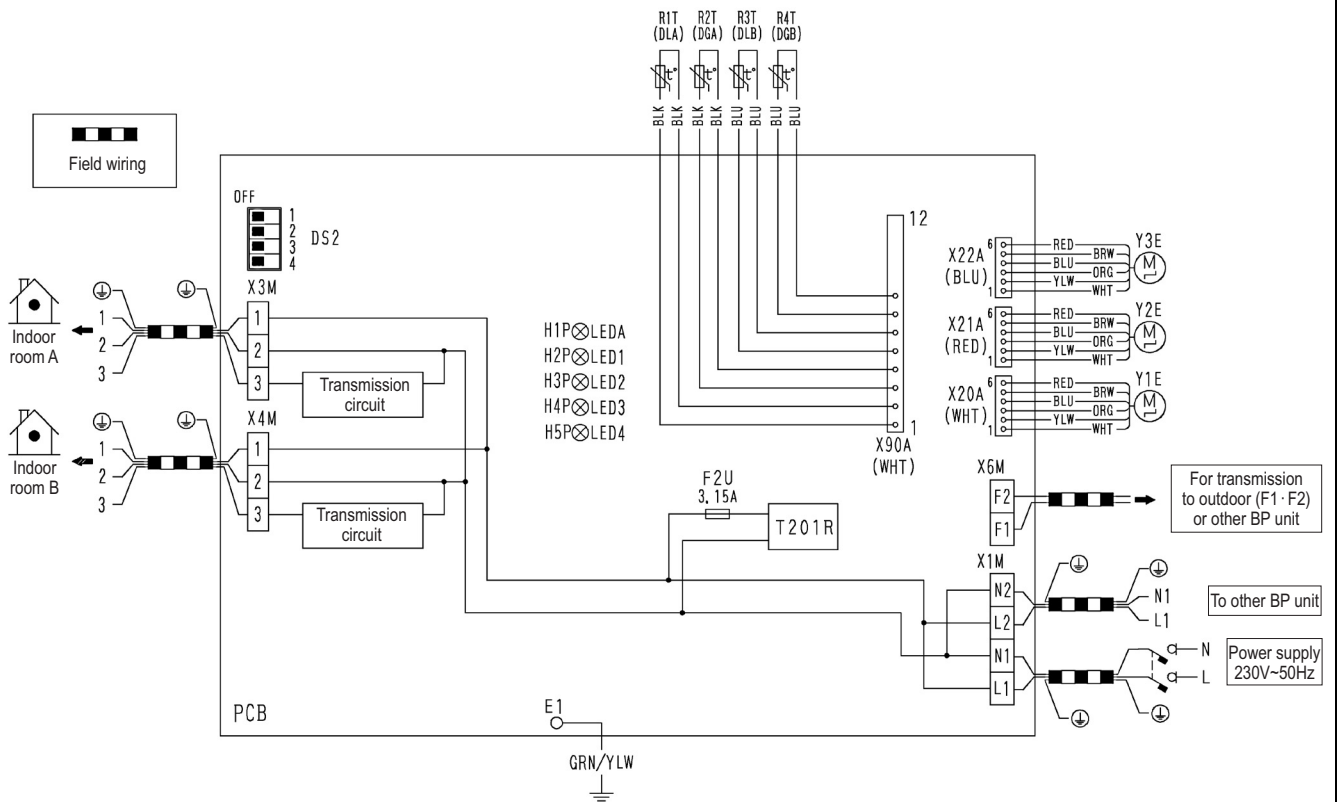


5 Wiring diagrams

5 - 1 Wiring Diagrams - Single Phase

5

BPMKS967B2



X20A~X22A, X90A	Connector	DS2	Dip switch
PCB	Printed circuit board	T201R	Transformer
F2U	Fuse	X1M, X3M, X4M, X6m	Terminal strip
H1P~H5P	Pilot Lamp	Y1E~Y3E	Motor operated valve coil
R1T~R4T	Thermistor		

3D048565B

NOTES

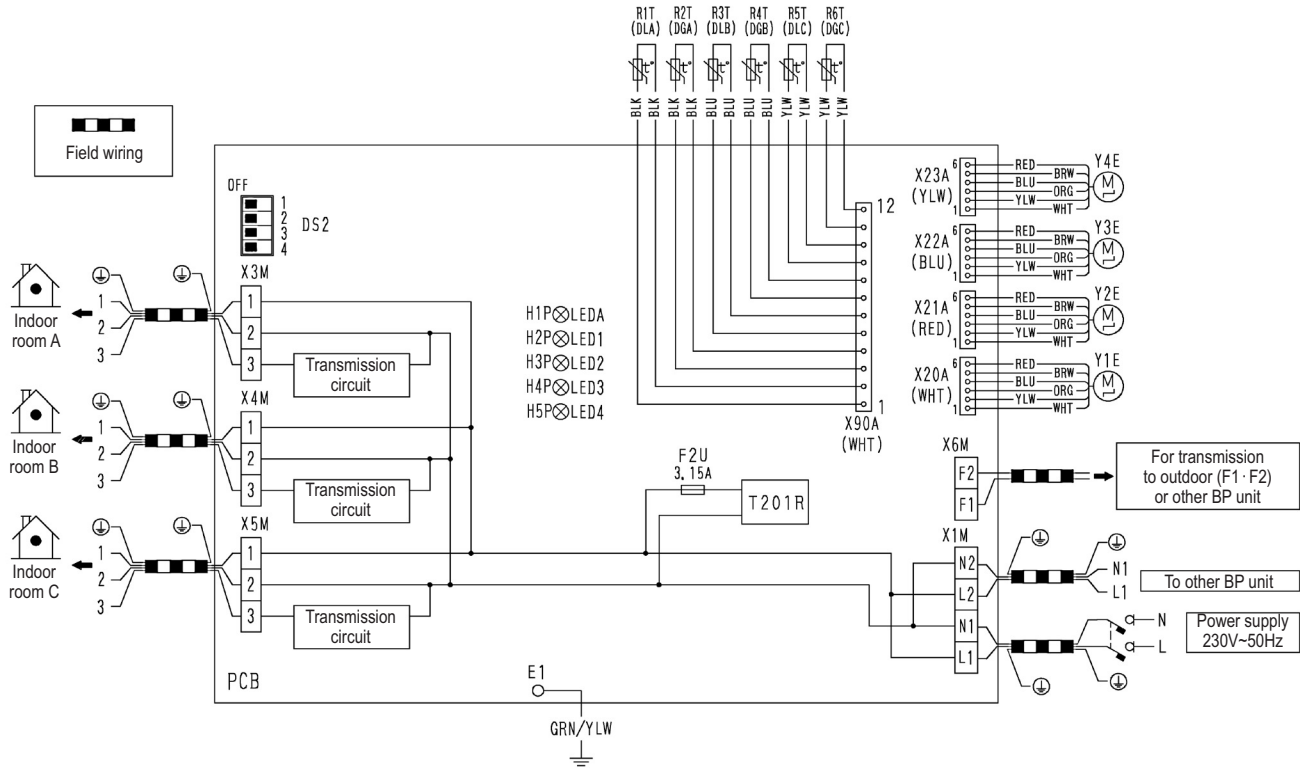
1. Wiring diagram nameplate size: width 100 x length 150 mm
2. Refer to AS(Y)303002 unless otherwise specified.

6

5 Wiring diagrams

5 - 1 Wiring Diagrams - Single Phase

BPMKS967B3



X20A~X23A, X90A	Connector	DS2	Dip switch
PCB	Printed circuit board	T201R	Transformer
F2U	Fuse	X1M, X3M~X6m	Terminal strip
H1P~H5P	Pilot Lamp	Y1E~Y4E	Motor operated valve coil
R1T~R4T	Thermistor		

3D048566-1

NOTES

1. Wiring diagram nameplate size: width 100 x length 150 mm
2. Refer to AS(Y)303002 unless otherwise specified.

In all of us,
a green heart



Daikin's unique position as a manufacturer of air conditioning equipment, compressors and refrigerants has led to its close involvement in environmental issues. For several years Daikin has had the intention to become a leader in the provision of products that have limited impact on the environment. This challenge demands the eco design and development of a wide range of products and an energy management system, resulting in energy conservation and a reduction of waste.



VRV® products are not within the scope of the Eurovent certification programme.

The present publication is drawn up by way of information only and does not constitute an offer binding upon Daikin Europe N.V. Daikin Europe N.V. has compiled the content of this publication to the best of its knowledge. No express or implied warranty is given for the completeness, accuracy, reliability or fitness for particular purpose of its content and the products and services presented therein. Specifications are subject to change without prior notice. Daikin Europe N.V. explicitly rejects any liability for any direct or indirect damage, in the broadest sense, arising from or related to the use and/or interpretation of this publication. All content is copyrighted by Daikin Europe N.V.



Daikin products are distributed by: