

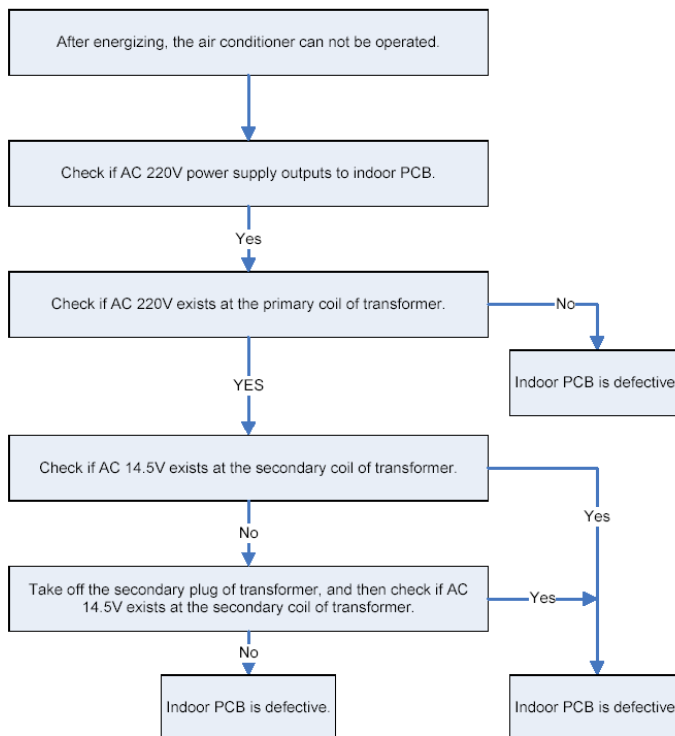
10. Troubleshooting

10.1 Indoor Unit Error Display

Display	LED STATUS
E1	EEPROM parameter error
E2	Zero-crossing signal error
E3	Fan speed out of control
E4	Over current protection of the compressor occurs 4 times
E5	Open or short circuit of outdoor temperature sensor
E6	Open or short circuit of room or evaporator temperature sensor

10.2 Diagnostic chart

After energizing, no indicator is lighted and the air conditioner can't be operated.



10.3 Resetting phenomenon often occurs during operation.

(That is automatically entering to the status when power is on.)

The reason is that the instantaneous voltage of main chip is less than 4.5V. Check according to the following procedure:

